

We need stronger watershed protection regulations because the current regulations are not protecting our streams. Wilkinson Creek is a good example of the impact of development on a watershed.

Wilkinson Creek watershed
Chatham County, NC

Legend

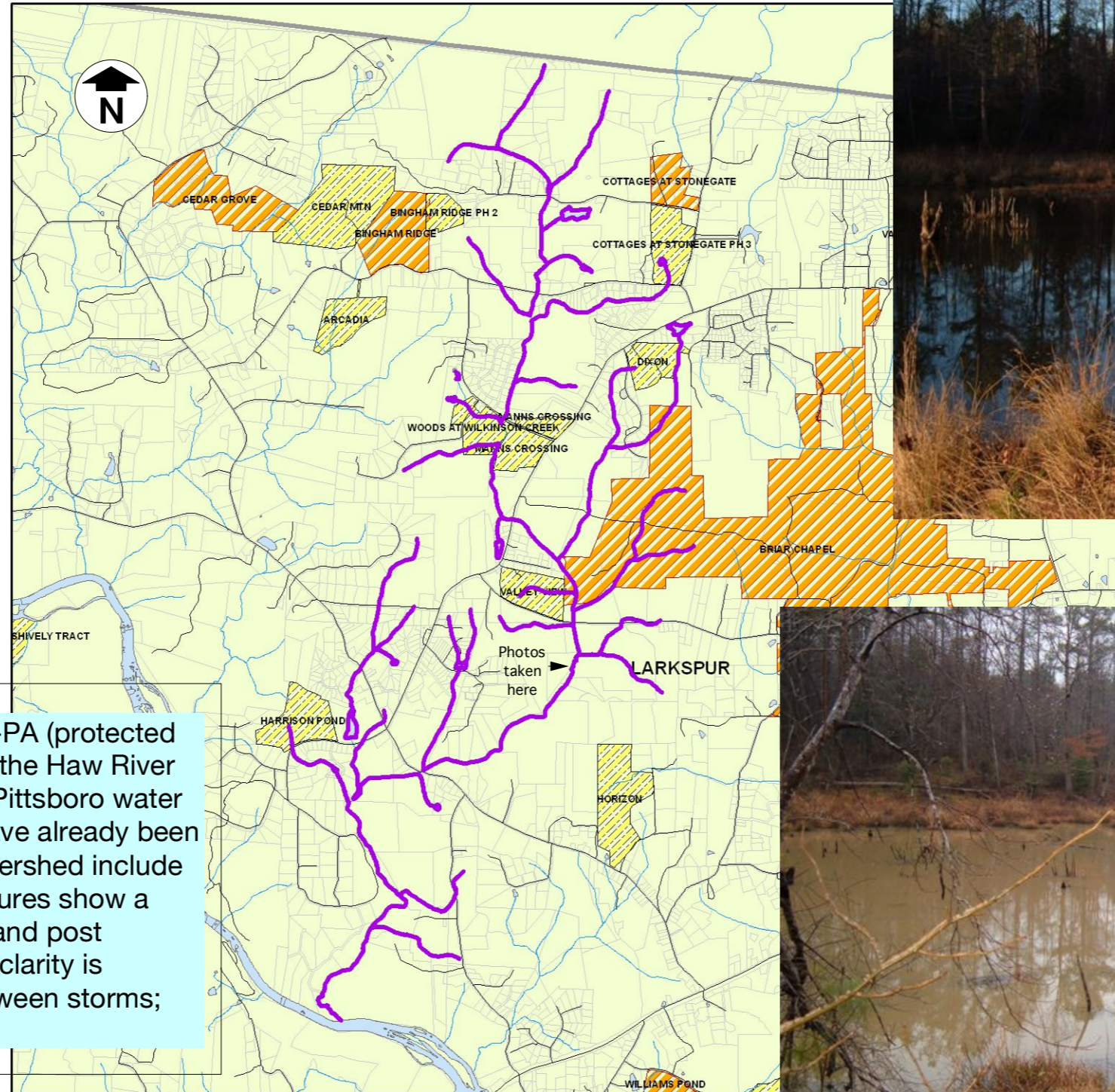
- Roads
- Streams - USGS (perennial)
- ▭ Ponds
- ▭ Parcels

Chatham Planning & Zoning

▭ <all other values>

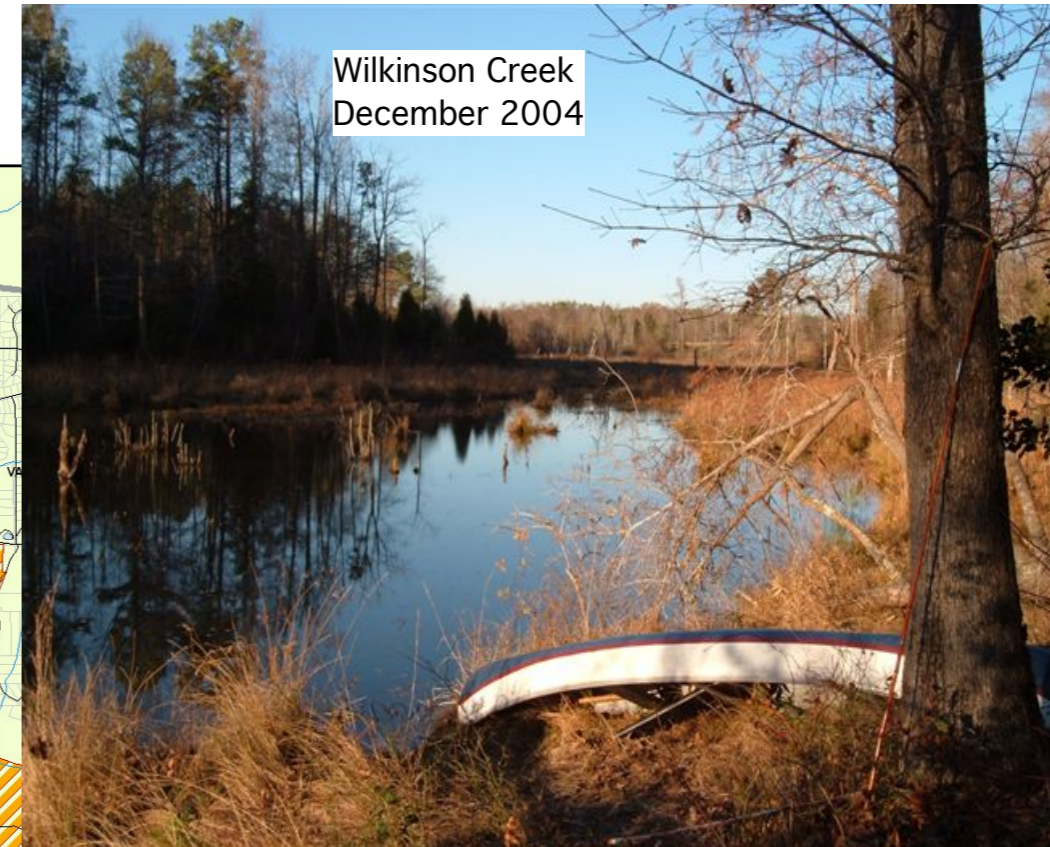
Development Status

- ▨ CONCEPT
- ▨ EXISTING
- ▨ EXT
- ▨ PITTSBORO
- ▨ PROPOSED



Wilkinson Creek is designated WS-IV-PA (protected area), protected because it flows into the Haw River just upstream from the intake for the Pittsboro water supply. The 9 developments which have already been approved for the Wilkinson Creek watershed include nearly 500 lots on 600 acres. The pictures show a beaver pond on Wilkinson Creek pre and post development. The difference in water clarity is striking. The water does not clear between storms; the impact is persistent.

Map created by Allison Weakley
February 2007



Wilkinson Creek
December 2004

Photos by Larry Diegel



Wilkinson Creek
February 2006