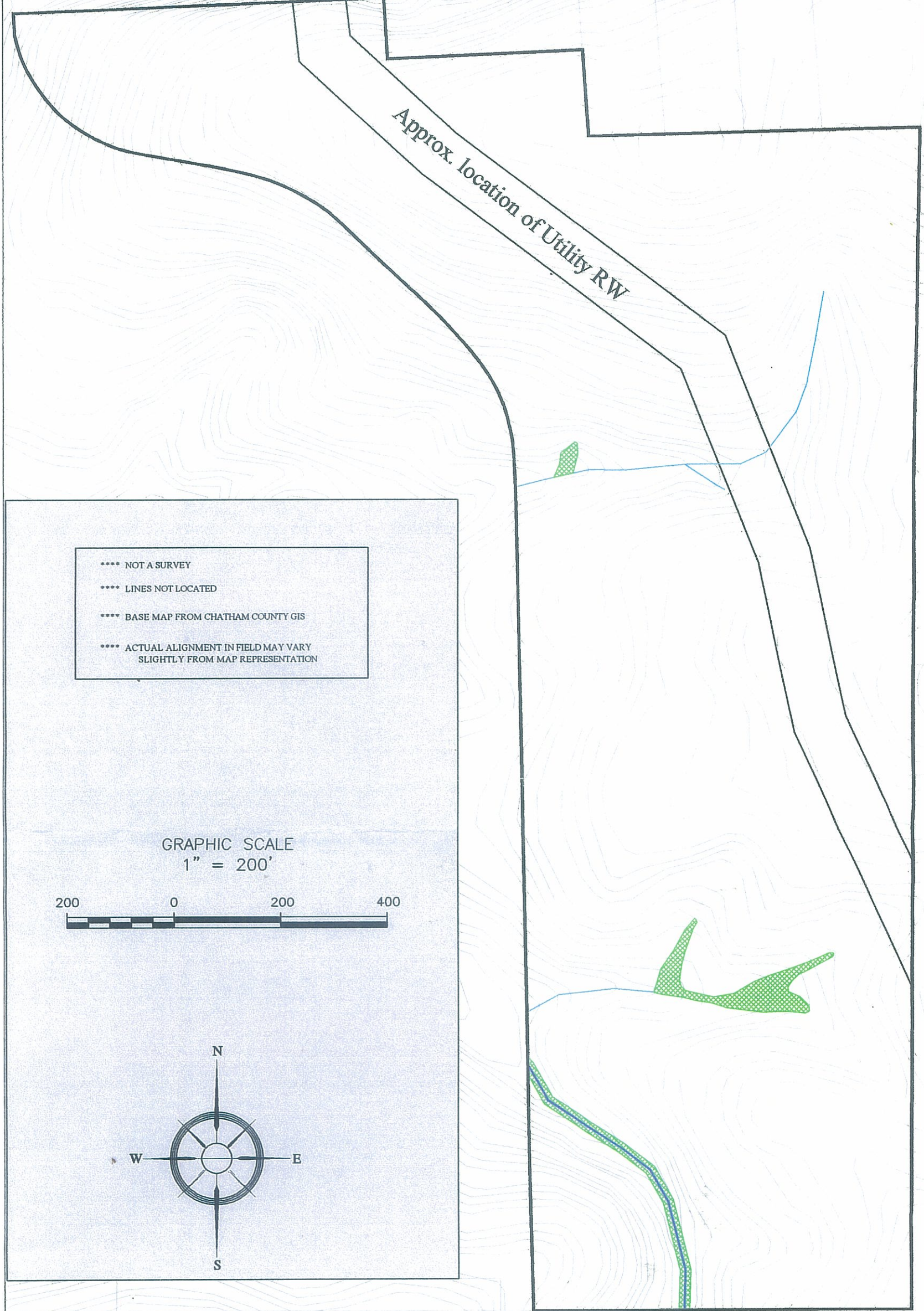
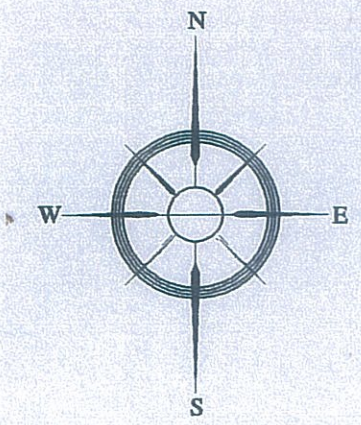


# PRELIMINARY WETLANDS APPROXIMATION



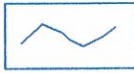


\*\*\*\* NOT A SURVEY  
 \*\*\*\* LINES NOT LOCATED  
 \*\*\*\* BASE MAP FROM CHATHAM COUNTY GIS  
 \*\*\*\* ACTUAL ALIGNMENT IN FIELD MAY VARY SLIGHTLY FROM MAP REPRESENTATION

GRAPHIC SCALE  
 1" = 200'



# PRELIMINARY WETLANDS APPROXIMATION

## LEGEND

|   |   |   |  |
|---|---|---|--|
|  | PRELIMINARY WETLANDS APPROXIMATION<br>Lines indicate approximate location of PERENNIAL STREAMS.                         |  | PRELIMINARY WETLANDS APPROXIMATION<br>Lines indicate approximate location of INTERMITTENT STREAMS. |
|  | PRELIMINARY WETLANDS APPROXIMATION<br>Areas indicate approximate size, location, and extent of jurisdictional wetlands. | See S&EC Report.  |  |

SHEET TITLE  
**Preliminary Wetlands Approximation**  
 SHEET 1 of 1

PROJECT NAME:  
 45ac Andrews Store Rd.  
 Edward Shenkman  
 Chatham County, NC  
 May 2006



**Soil and Environmental Consultants, PA**  
 3817-E Lawndale Drive, Greensboro, North Carolina 27455  
 Phone (336) 540-8234 Fax (336) 540-8235  
 Web Page www.SandEC.com

REVISIONS:

|              |  |
|--------------|--|
| JOB NO.      | 4-1633-S1                                    |
| PROJECT MGR. | ES   |
| DRAWN        | JT   |
| CHECKED      | JT   |
| SCALE        | 1" = 200'                                    |
| FILE #       | 45ac-andrews-store-1633-prelim-wetlands-appr |