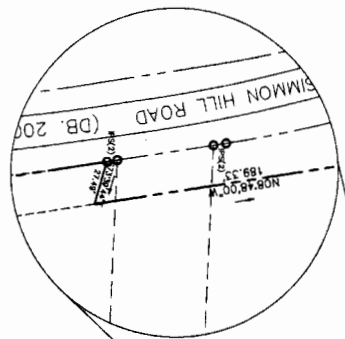


SITE DATA

TOTAL NUMBER OF PROPOSED SINGLE FAMILY LOTS = 27
 AREA RESERVED BY OWNER: 20 AC.
 AREA RESERVED FOR FUTURE DEVELOPMENT: 20.42 AC.
 AREA RESERVED FOR SINGLE FAMILY DEVELOPMENT: 43.02 AC.
 TOTAL TRACT AREA: 83.44 AC.

PIN No. 9766-10-8518 (JAMES E. DIXON)
 9766-20-8324 (JAMES E. DIXON)
 PARCEL No. 82205 (JAMES E. DIXON)
 80775 (JAMES E. DIXON)

ZONING: RA-40



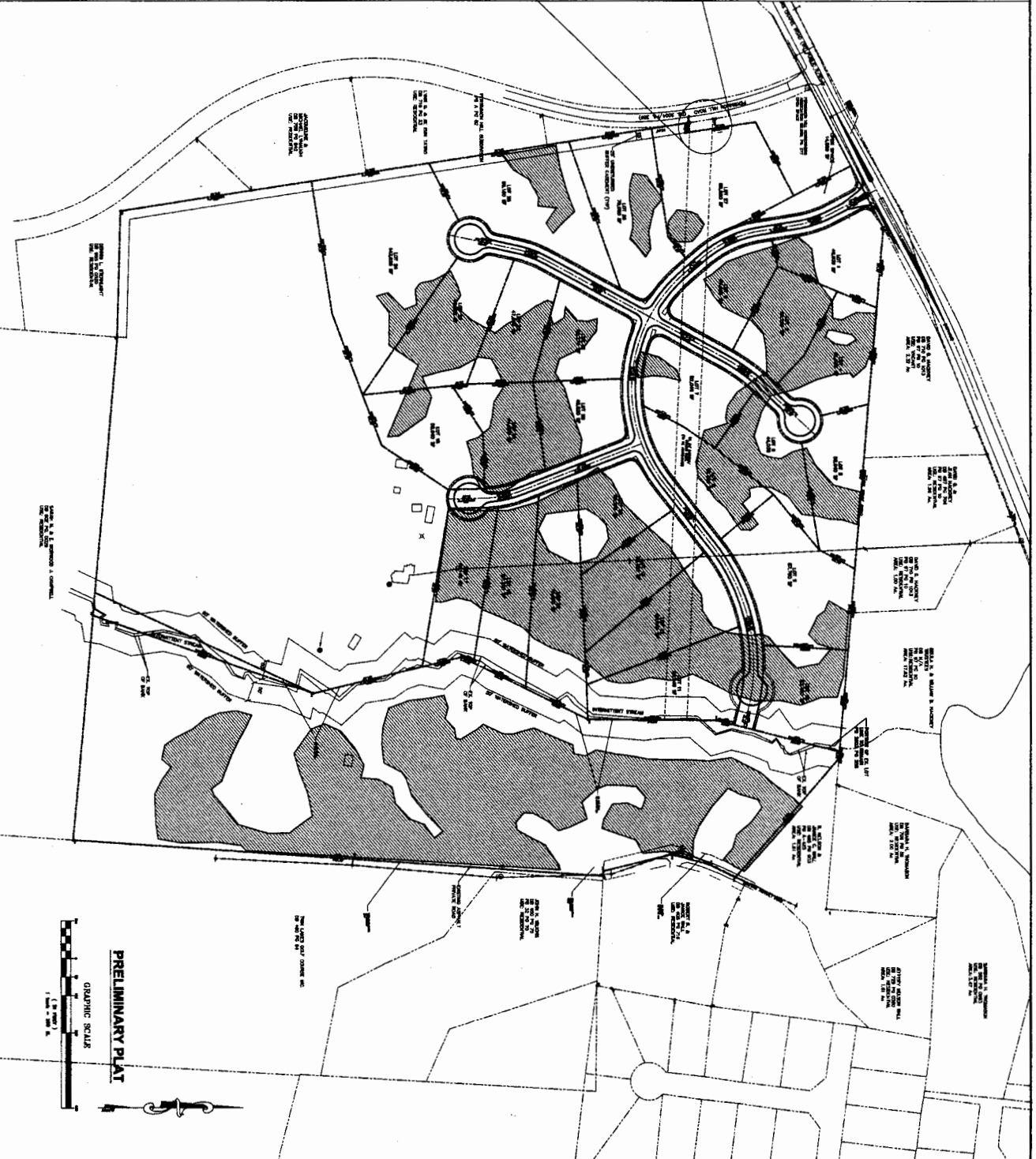
INSET 'A'
 SCALE: 1"=30'

- GENERAL NOTES:**
1. TOPOGRAPHIC INFORMATION OBTAINED FROM CHATHAM COUNTY GIS.
 2. PUBLIC WATER IS AVAILABLE WITHIN 100 FEET OF THE PROPERTY. PUBLIC WATER DISTRIBUTION SYSTEM HAS BEEN APPROVED BY CHATHAM COUNTY.
 3. ALL LOTS SHALL BE SERVED BY PROPERLY DESIGNED SEPTIC SYSTEMS.

LEGEND

SOIL SUITABLE TO SUPPORT CONVENTIONAL SEPTIC SYSTEMS (AS DETERMINED BY REPORT DATED DECEMBER 14, 2004)

LINE	LENGTH	BEARING									
L1	28.80'	S20°34'11\"/>									
L2	103.90'	S14°22'11\"/> <tr> <td>L3</td> <td>186.60'</td> <td>S13°40'49\"/> <tr> <td>L4</td> <td>13.87'</td> <td>S96°43'19\"/> <tr> <td>L5</td> <td>109.99'</td> <td>N81°27'24\"/> </td></tr> </td></tr></td></tr>	L3	186.60'	S13°40'49\"/> <tr> <td>L4</td> <td>13.87'</td> <td>S96°43'19\"/> <tr> <td>L5</td> <td>109.99'</td> <td>N81°27'24\"/> </td></tr> </td></tr>	L4	13.87'	S96°43'19\"/> <tr> <td>L5</td> <td>109.99'</td> <td>N81°27'24\"/> </td></tr>	L5	109.99'	N81°27'24\"/>
L3	186.60'	S13°40'49\"/> <tr> <td>L4</td> <td>13.87'</td> <td>S96°43'19\"/> <tr> <td>L5</td> <td>109.99'</td> <td>N81°27'24\"/> </td></tr> </td></tr>	L4	13.87'	S96°43'19\"/> <tr> <td>L5</td> <td>109.99'</td> <td>N81°27'24\"/> </td></tr>	L5	109.99'	N81°27'24\"/>			
L4	13.87'	S96°43'19\"/> <tr> <td>L5</td> <td>109.99'</td> <td>N81°27'24\"/> </td></tr>	L5	109.99'	N81°27'24\"/>						
L5	109.99'	N81°27'24\"/>									



NO.	DESCRIPTION	DATE
1	PRELIMINARY PLAT SUBMITTAL	5/8/2007
2	REVISED PLAT	5/8/2007
3	REVISED PLAT	5/8/2007
4	REVISED PLAT	5/8/2007
5	REVISED PLAT	5/8/2007
6	REVISED PLAT	5/8/2007
7	REVISED PLAT	5/8/2007
8	REVISED PLAT	5/8/2007
9	REVISED PLAT	5/8/2007
10	REVISED PLAT	5/8/2007
11	REVISED PLAT	5/8/2007
12	REVISED PLAT	5/8/2007
13	REVISED PLAT	5/8/2007
14	REVISED PLAT	5/8/2007
15	REVISED PLAT	5/8/2007
16	REVISED PLAT	5/8/2007
17	REVISED PLAT	5/8/2007
18	REVISED PLAT	5/8/2007
19	REVISED PLAT	5/8/2007
20	REVISED PLAT	5/8/2007
21	REVISED PLAT	5/8/2007
22	REVISED PLAT	5/8/2007
23	REVISED PLAT	5/8/2007
24	REVISED PLAT	5/8/2007
25	REVISED PLAT	5/8/2007
26	REVISED PLAT	5/8/2007
27	REVISED PLAT	5/8/2007

CHATHAM COUNTY

PLANNING & ZONING DEPARTMENT

APPROVED FOR SUBMITTAL

DATE: 5/8/2007

PRELIMINARY PLAT SUBMITTAL

FIELDSTONE

PROPERTY

(JAMES DIXON PROPERTY)

CHATHAM COUNTY, NC

PRELIMINARY PLAT

GRAPHIC SCALE

1" = 30'

FIELDSTONE

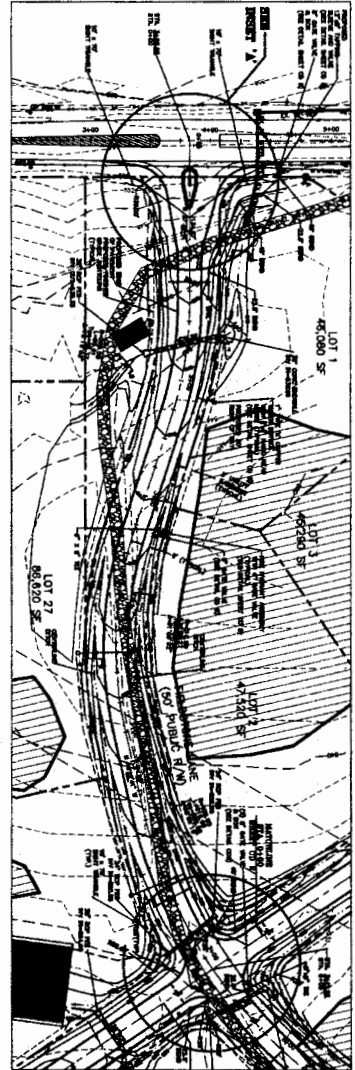
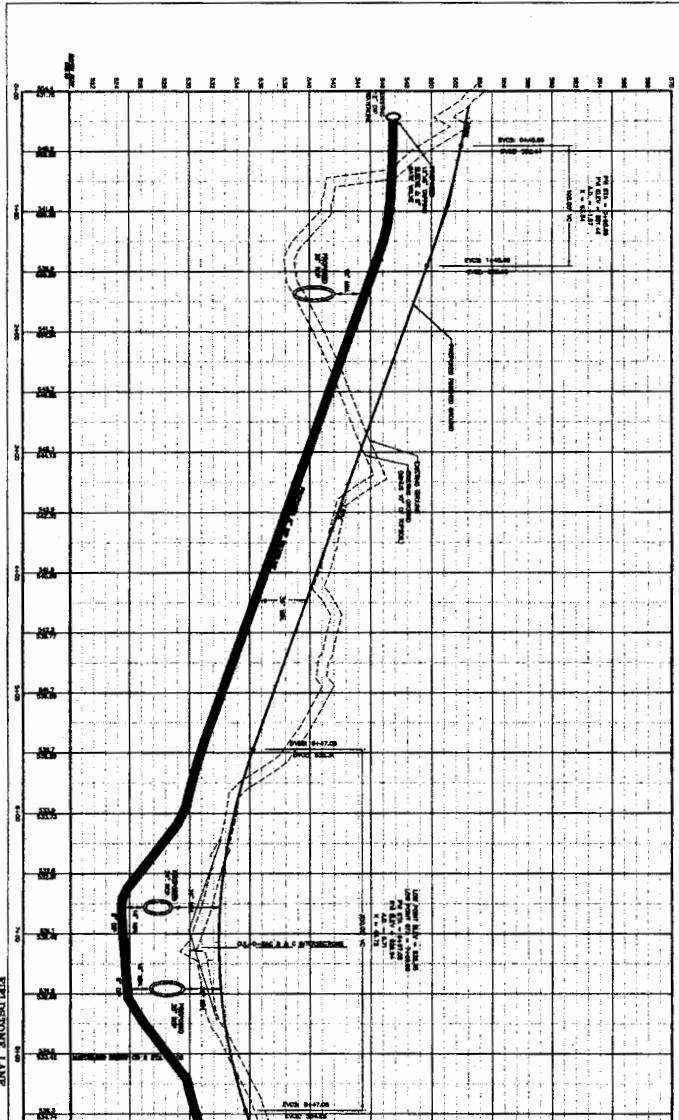
PROPERTY

(JAMES DIXON PROPERTY)

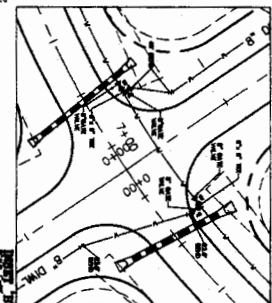
CHATHAM COUNTY, NC

COV

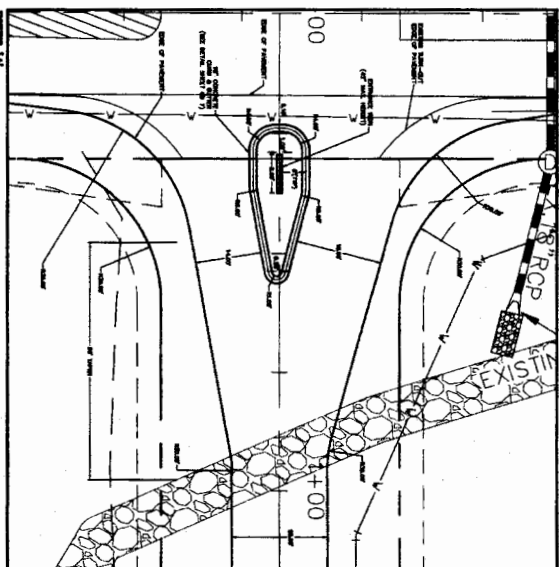
GRAPHIC SCALE
1" = 40'



FIELDSTONE LANE
STA. 0+00 thru 8+00
PLAN VIEW



- UTILITY PLAN NOTES**
- CONTRACTOR SHALL VERIFY EXISTING AND PROPOSED UTILITY LOCATIONS, DEPTHS AND SPACING BEFORE ANY CONSTRUCTION.
 - ALL CONSTRUCTION SHALL BE IN ACCORDANCE WITH THE UTILITY LOCATIONS SHOWN ON THIS PLAN.
 - CONTRACTOR SHALL MAINTAIN ALL EXISTING UTILITIES AND SHALL BE RESPONSIBLE FOR ANY DAMAGE TO EXISTING UTILITIES.
 - CONTRACTOR SHALL MAINTAIN ALL EXISTING UTILITIES AND SHALL BE RESPONSIBLE FOR ANY DAMAGE TO EXISTING UTILITIES.
 - CONTRACTOR SHALL MAINTAIN ALL EXISTING UTILITIES AND SHALL BE RESPONSIBLE FOR ANY DAMAGE TO EXISTING UTILITIES.
 - CONTRACTOR SHALL MAINTAIN ALL EXISTING UTILITIES AND SHALL BE RESPONSIBLE FOR ANY DAMAGE TO EXISTING UTILITIES.
 - CONTRACTOR SHALL MAINTAIN ALL EXISTING UTILITIES AND SHALL BE RESPONSIBLE FOR ANY DAMAGE TO EXISTING UTILITIES.
 - CONTRACTOR SHALL MAINTAIN ALL EXISTING UTILITIES AND SHALL BE RESPONSIBLE FOR ANY DAMAGE TO EXISTING UTILITIES.
 - CONTRACTOR SHALL MAINTAIN ALL EXISTING UTILITIES AND SHALL BE RESPONSIBLE FOR ANY DAMAGE TO EXISTING UTILITIES.
 - CONTRACTOR SHALL MAINTAIN ALL EXISTING UTILITIES AND SHALL BE RESPONSIBLE FOR ANY DAMAGE TO EXISTING UTILITIES.



NO.	DATE	BY	DESCRIPTION
1	5/8/07	T.F.	ISSUED FOR PERMIT
2	5/8/07	T.F.	ISSUED FOR PERMIT
3	5/8/07	T.F.	ISSUED FOR PERMIT
4	5/8/07	T.F.	ISSUED FOR PERMIT
5	5/8/07	T.F.	ISSUED FOR PERMIT
6	5/8/07	T.F.	ISSUED FOR PERMIT
7	5/8/07	T.F.	ISSUED FOR PERMIT
8	5/8/07	T.F.	ISSUED FOR PERMIT
9	5/8/07	T.F.	ISSUED FOR PERMIT
10	5/8/07	T.F.	ISSUED FOR PERMIT

PRELIMINARY PLAT SUBMITTAL

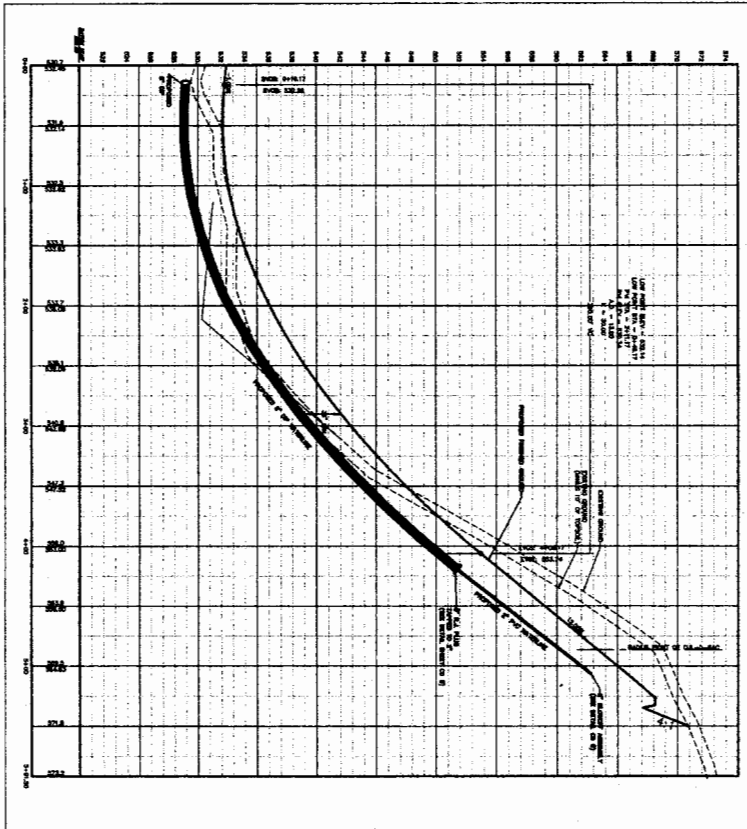
FIELDSTONE
FORMERLY
(JAMES DIXON PROPERTY)
CALHOUN COUNTY, NC

1	THE CHAIRMAN, BOARD OF DIRECTORS	DATE	SCALE
2	THE CHAIRMAN, BOARD OF DIRECTORS	DATE	SCALE
3	THE CHAIRMAN, BOARD OF DIRECTORS	DATE	SCALE
4	THE CHAIRMAN, BOARD OF DIRECTORS	DATE	SCALE
5	THE CHAIRMAN, BOARD OF DIRECTORS	DATE	SCALE
6	THE CHAIRMAN, BOARD OF DIRECTORS	DATE	SCALE
7	THE CHAIRMAN, BOARD OF DIRECTORS	DATE	SCALE
8	THE CHAIRMAN, BOARD OF DIRECTORS	DATE	SCALE
9	THE CHAIRMAN, BOARD OF DIRECTORS	DATE	SCALE
10	THE CHAIRMAN, BOARD OF DIRECTORS	DATE	SCALE
11	THE CHAIRMAN, BOARD OF DIRECTORS	DATE	SCALE
12	THE CHAIRMAN, BOARD OF DIRECTORS	DATE	SCALE
13	THE CHAIRMAN, BOARD OF DIRECTORS	DATE	SCALE
14	THE CHAIRMAN, BOARD OF DIRECTORS	DATE	SCALE
15	THE CHAIRMAN, BOARD OF DIRECTORS	DATE	SCALE
16	THE CHAIRMAN, BOARD OF DIRECTORS	DATE	SCALE
17	THE CHAIRMAN, BOARD OF DIRECTORS	DATE	SCALE
18	THE CHAIRMAN, BOARD OF DIRECTORS	DATE	SCALE
19	THE CHAIRMAN, BOARD OF DIRECTORS	DATE	SCALE
20	THE CHAIRMAN, BOARD OF DIRECTORS	DATE	SCALE
21	THE CHAIRMAN, BOARD OF DIRECTORS	DATE	SCALE
22	THE CHAIRMAN, BOARD OF DIRECTORS	DATE	SCALE
23	THE CHAIRMAN, BOARD OF DIRECTORS	DATE	SCALE
24	THE CHAIRMAN, BOARD OF DIRECTORS	DATE	SCALE
25	THE CHAIRMAN, BOARD OF DIRECTORS	DATE	SCALE
26	THE CHAIRMAN, BOARD OF DIRECTORS	DATE	SCALE
27	THE CHAIRMAN, BOARD OF DIRECTORS	DATE	SCALE
28	THE CHAIRMAN, BOARD OF DIRECTORS	DATE	SCALE
29	THE CHAIRMAN, BOARD OF DIRECTORS	DATE	SCALE
30	THE CHAIRMAN, BOARD OF DIRECTORS	DATE	SCALE
31	THE CHAIRMAN, BOARD OF DIRECTORS	DATE	SCALE
32	THE CHAIRMAN, BOARD OF DIRECTORS	DATE	SCALE
33	THE CHAIRMAN, BOARD OF DIRECTORS	DATE	SCALE
34	THE CHAIRMAN, BOARD OF DIRECTORS	DATE	SCALE
35	THE CHAIRMAN, BOARD OF DIRECTORS	DATE	SCALE
36	THE CHAIRMAN, BOARD OF DIRECTORS	DATE	SCALE
37	THE CHAIRMAN, BOARD OF DIRECTORS	DATE	SCALE
38	THE CHAIRMAN, BOARD OF DIRECTORS	DATE	SCALE
39	THE CHAIRMAN, BOARD OF DIRECTORS	DATE	SCALE
40	THE CHAIRMAN, BOARD OF DIRECTORS	DATE	SCALE
41	THE CHAIRMAN, BOARD OF DIRECTORS	DATE	SCALE
42	THE CHAIRMAN, BOARD OF DIRECTORS	DATE	SCALE
43	THE CHAIRMAN, BOARD OF DIRECTORS	DATE	SCALE
44	THE CHAIRMAN, BOARD OF DIRECTORS	DATE	SCALE
45	THE CHAIRMAN, BOARD OF DIRECTORS	DATE	SCALE
46	THE CHAIRMAN, BOARD OF DIRECTORS	DATE	SCALE
47	THE CHAIRMAN, BOARD OF DIRECTORS	DATE	SCALE
48	THE CHAIRMAN, BOARD OF DIRECTORS	DATE	SCALE
49	THE CHAIRMAN, BOARD OF DIRECTORS	DATE	SCALE
50	THE CHAIRMAN, BOARD OF DIRECTORS	DATE	SCALE
51	THE CHAIRMAN, BOARD OF DIRECTORS	DATE	SCALE
52	THE CHAIRMAN, BOARD OF DIRECTORS	DATE	SCALE
53	THE CHAIRMAN, BOARD OF DIRECTORS	DATE	SCALE
54	THE CHAIRMAN, BOARD OF DIRECTORS	DATE	SCALE
55	THE CHAIRMAN, BOARD OF DIRECTORS	DATE	SCALE
56	THE CHAIRMAN, BOARD OF DIRECTORS	DATE	SCALE
57	THE CHAIRMAN, BOARD OF DIRECTORS	DATE	SCALE
58	THE CHAIRMAN, BOARD OF DIRECTORS	DATE	SCALE
59	THE CHAIRMAN, BOARD OF DIRECTORS	DATE	SCALE
60	THE CHAIRMAN, BOARD OF DIRECTORS	DATE	SCALE
61	THE CHAIRMAN, BOARD OF DIRECTORS	DATE	SCALE
62	THE CHAIRMAN, BOARD OF DIRECTORS	DATE	SCALE
63	THE CHAIRMAN, BOARD OF DIRECTORS	DATE	SCALE
64	THE CHAIRMAN, BOARD OF DIRECTORS	DATE	SCALE
65	THE CHAIRMAN, BOARD OF DIRECTORS	DATE	SCALE
66	THE CHAIRMAN, BOARD OF DIRECTORS	DATE	SCALE
67	THE CHAIRMAN, BOARD OF DIRECTORS	DATE	SCALE
68	THE CHAIRMAN, BOARD OF DIRECTORS	DATE	SCALE
69	THE CHAIRMAN, BOARD OF DIRECTORS	DATE	SCALE
70	THE CHAIRMAN, BOARD OF DIRECTORS	DATE	SCALE
71	THE CHAIRMAN, BOARD OF DIRECTORS	DATE	SCALE
72	THE CHAIRMAN, BOARD OF DIRECTORS	DATE	SCALE
73	THE CHAIRMAN, BOARD OF DIRECTORS	DATE	SCALE
74	THE CHAIRMAN, BOARD OF DIRECTORS	DATE	SCALE
75	THE CHAIRMAN, BOARD OF DIRECTORS	DATE	SCALE
76	THE CHAIRMAN, BOARD OF DIRECTORS	DATE	SCALE
77	THE CHAIRMAN, BOARD OF DIRECTORS	DATE	SCALE
78	THE CHAIRMAN, BOARD OF DIRECTORS	DATE	SCALE
79	THE CHAIRMAN, BOARD OF DIRECTORS	DATE	SCALE
80	THE CHAIRMAN, BOARD OF DIRECTORS	DATE	SCALE
81	THE CHAIRMAN, BOARD OF DIRECTORS	DATE	SCALE
82	THE CHAIRMAN, BOARD OF DIRECTORS	DATE	SCALE
83	THE CHAIRMAN, BOARD OF DIRECTORS	DATE	SCALE
84	THE CHAIRMAN, BOARD OF DIRECTORS	DATE	SCALE
85	THE CHAIRMAN, BOARD OF DIRECTORS	DATE	SCALE
86	THE CHAIRMAN, BOARD OF DIRECTORS	DATE	SCALE
87	THE CHAIRMAN, BOARD OF DIRECTORS	DATE	SCALE
88	THE CHAIRMAN, BOARD OF DIRECTORS	DATE	SCALE
89	THE CHAIRMAN, BOARD OF DIRECTORS	DATE	SCALE
90	THE CHAIRMAN, BOARD OF DIRECTORS	DATE	SCALE
91	THE CHAIRMAN, BOARD OF DIRECTORS	DATE	SCALE
92	THE CHAIRMAN, BOARD OF DIRECTORS	DATE	SCALE
93	THE CHAIRMAN, BOARD OF DIRECTORS	DATE	SCALE
94	THE CHAIRMAN, BOARD OF DIRECTORS	DATE	SCALE
95	THE CHAIRMAN, BOARD OF DIRECTORS	DATE	SCALE
96	THE CHAIRMAN, BOARD OF DIRECTORS	DATE	SCALE
97	THE CHAIRMAN, BOARD OF DIRECTORS	DATE	SCALE
98	THE CHAIRMAN, BOARD OF DIRECTORS	DATE	SCALE
99	THE CHAIRMAN, BOARD OF DIRECTORS	DATE	SCALE
100	THE CHAIRMAN, BOARD OF DIRECTORS	DATE	SCALE

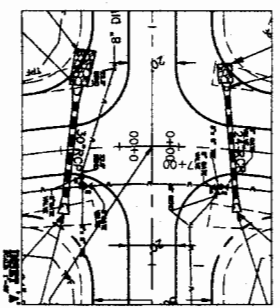
PRELIMINARY PLAT SUBMITTAL

FIELDSTONE
Formerly
(JAMES DIXON PROPERTY)
OWNER

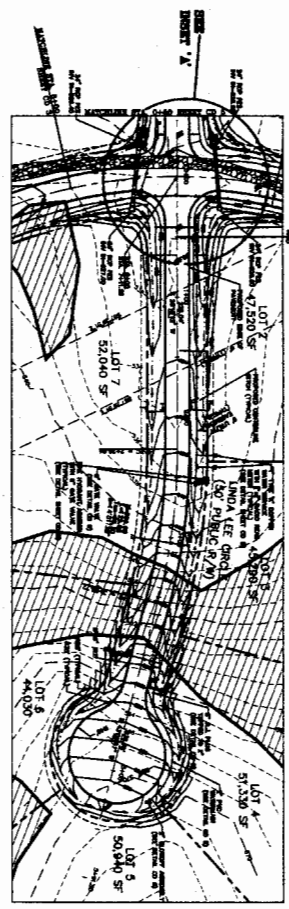
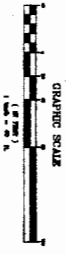
CD 4



LINDA LEE CIRCLE
Sta. 0+00 thru 5+41.50
PROFILE VIEW



LINDA LEE CIRCLE
Sta. 0+00 - 5+41.50
PLAN & PROFILE



LINDA LEE CIRCLE
Sta. 0+00 thru 5+41.50
PLAN VIEW

- UTILITY PLAN NOTES**
1. CONTRACTOR SHALL VERIFY THE LOCATION AND DEPTH OF ALL EXISTING UTILITIES PRIOR TO CONSTRUCTION.
 2. ALL UTILITIES SHALL BE DEPTHS AS SHOWN ON THIS PLAN UNLESS OTHERWISE NOTED.
 3. CONTRACTOR SHALL VERIFY THE LOCATION AND DEPTH OF ALL EXISTING UTILITIES PRIOR TO CONSTRUCTION.
 4. CONTRACTOR SHALL VERIFY THE LOCATION AND DEPTH OF ALL EXISTING UTILITIES PRIOR TO CONSTRUCTION.
 5. CONTRACTOR SHALL VERIFY THE LOCATION AND DEPTH OF ALL EXISTING UTILITIES PRIOR TO CONSTRUCTION.
 6. CONTRACTOR SHALL VERIFY THE LOCATION AND DEPTH OF ALL EXISTING UTILITIES PRIOR TO CONSTRUCTION.
 7. CONTRACTOR SHALL VERIFY THE LOCATION AND DEPTH OF ALL EXISTING UTILITIES PRIOR TO CONSTRUCTION.
 8. CONTRACTOR SHALL VERIFY THE LOCATION AND DEPTH OF ALL EXISTING UTILITIES PRIOR TO CONSTRUCTION.
 9. CONTRACTOR SHALL VERIFY THE LOCATION AND DEPTH OF ALL EXISTING UTILITIES PRIOR TO CONSTRUCTION.
 10. CONTRACTOR SHALL VERIFY THE LOCATION AND DEPTH OF ALL EXISTING UTILITIES PRIOR TO CONSTRUCTION.

NO.	REVISION	DATE
1	ISSUED FOR PERMITTING	5/8/07
2	ISSUED FOR PERMITTING	5/8/07
3	ISSUED FOR PERMITTING	5/8/07
4	ISSUED FOR PERMITTING	5/8/07
5	ISSUED FOR PERMITTING	5/8/07
6	ISSUED FOR PERMITTING	5/8/07
7	ISSUED FOR PERMITTING	5/8/07
8	ISSUED FOR PERMITTING	5/8/07
9	ISSUED FOR PERMITTING	5/8/07
10	ISSUED FOR PERMITTING	5/8/07

OWNER INFORMATION
 PROJECT NO. 102002.00
 SHEET NO. CD 5



BALLENTE ASSOCIATES P.A.
 1000 W. HARRIS STREET
 RALEIGH, NC 27601
 TEL: 919.877.1100
 FAX: 919.877.1101
 WWW.BALLENTE.COM

DESIGNED BY: J. DIXON
 CHECKED BY: J. DIXON
 DATE: 5/8/07

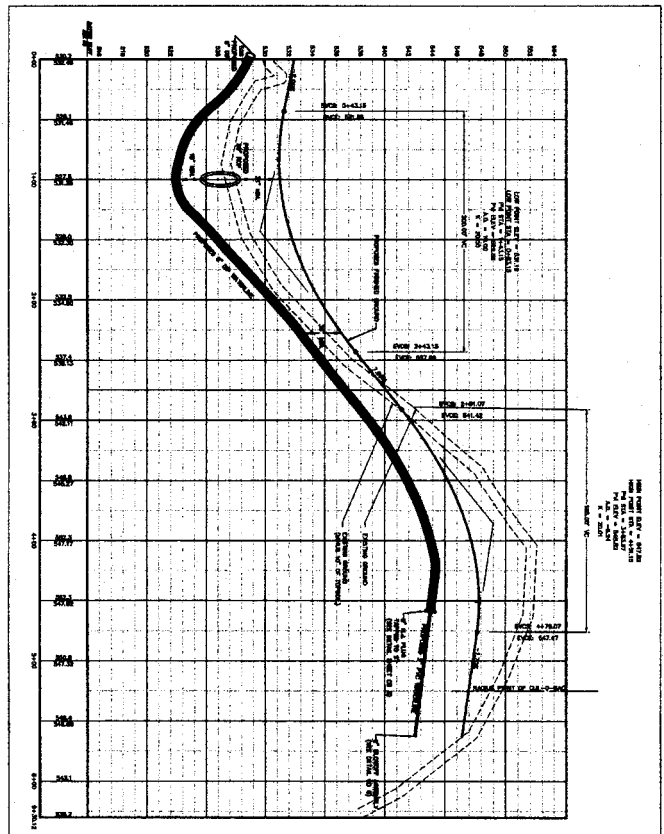
DATE: 5/8/07
 TIME: 10:00 AM
 SCALE: 1" = 40'

PRELIMINARY PLAT SUBMITTAL

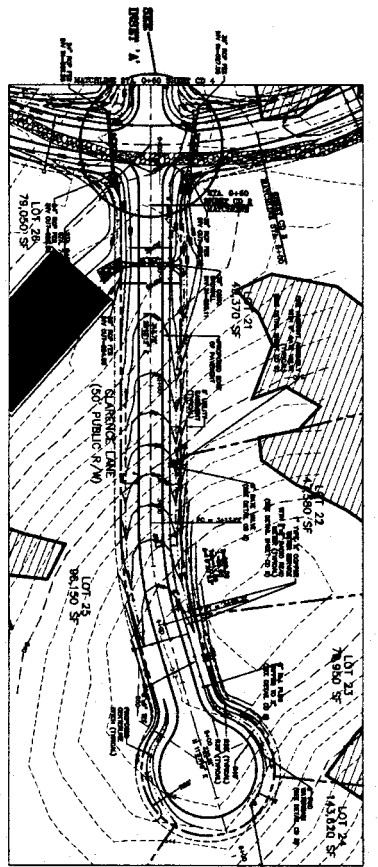
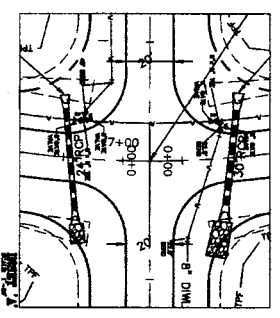
SCALE: 1" = 40'
 DATE: 5/8/07
 TIME: 10:00 AM
 CHECKED BY: J. DIXON

FIELDSTONE
 PROPERTY
 (JAMES DIXON PROPERTY)
 CLARENCE LANE, NC

SHEET #
CD 5

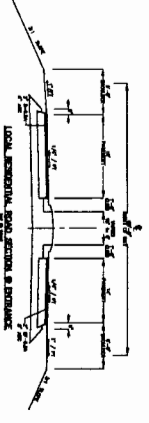
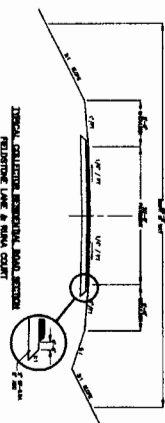
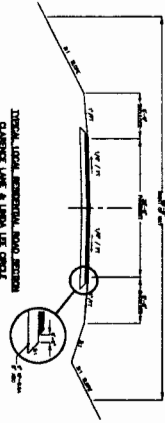
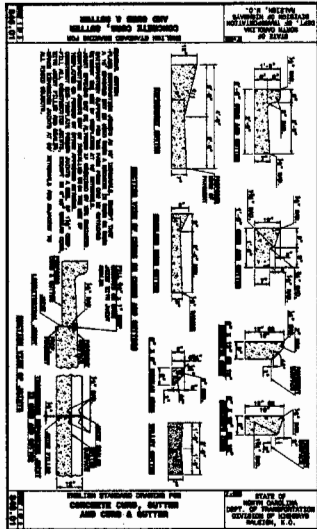
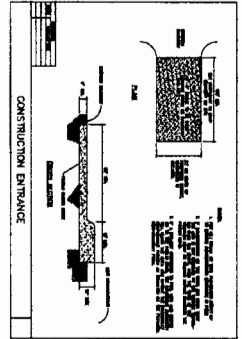
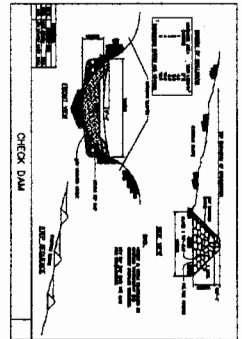
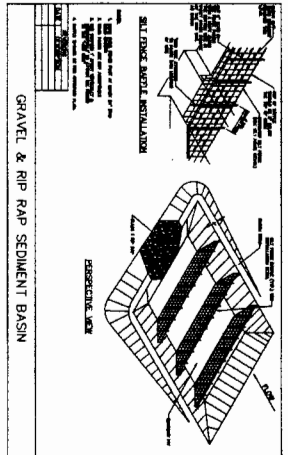
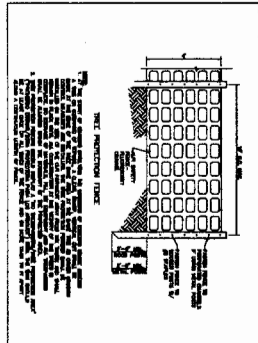
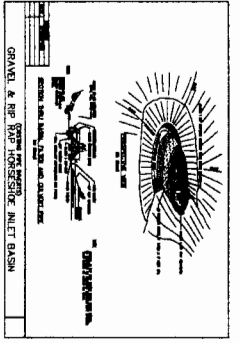


CLARENCE LANE
 STA.: 0+00 thru 5+80.12
 PROFILE VIEW
 SCALE: 1" = 40'



CLARENCE LANE
 STA.: 0+00 thru 5+80.12
 PLAN VIEW
 SCALE: 1" = 40'

- UTILITY PLAN NOTES**
1. CONTRACTOR SHALL COORDINATE WITH ALL UTILITIES AND PROVIDE PROTECTION OF EXISTING UTILITIES AND REPAIR SERVICE TO ALL UTILITIES.
 2. ALL UTILITIES SHALL BE DEEPER THAN THE PROPOSED UTILITY CONDUITS.
 3. CONTRACTOR SHALL HAVE SURVEY DATA AND DIAL (1+00-40-40) SURVEY DATA TO VERIFY THE DEPTH AND LOCATION OF ALL EXISTING UTILITIES AND VERIFY THE DEPTH OF ANY DISCREPANCIES OR CONFLICTS FROM TO DESIGN.
 4. THIS PLAN IS SUBMITTAL AND REPRESENTS THE PROPOSED LOCATION OF UTILITIES UNDER SPECIFIC CONDITIONS. THE CONTRACTOR SHALL VERIFY THE LOCATION OF UTILITIES AND VERIFY THE DEPTH AND LOCATION OF ALL UTILITIES AND VERIFY THE DEPTH AND LOCATION OF ALL UTILITIES AND VERIFY THE DEPTH AND LOCATION OF ALL UTILITIES.
 5. CONTRACTOR SHALL COORDINATE THE LOCATION OF UTILITIES WITH THE PROPOSED UTILITY CONDUITS AND VERIFY THE DEPTH AND LOCATION OF ALL UTILITIES AND VERIFY THE DEPTH AND LOCATION OF ALL UTILITIES.



SITE DETAILS

<p>REVISIONS</p> <table border="1"> <tr> <th>NO.</th> <th>DATE</th> <th>DESCRIPTION</th> </tr> <tr> <td>1</td> <td>5/9/07</td> <td>ISSUED FOR PERMIT</td> </tr> <tr> <td>2</td> <td>5/9/07</td> <td>ISSUED FOR PERMIT</td> </tr> <tr> <td>3</td> <td>5/9/07</td> <td>ISSUED FOR PERMIT</td> </tr> </table>		NO.	DATE	DESCRIPTION	1	5/9/07	ISSUED FOR PERMIT	2	5/9/07	ISSUED FOR PERMIT	3	5/9/07	ISSUED FOR PERMIT	<p>OWNER INFORMATION</p> <p>OWNER: JAMES DIXON PROPERTY</p> <p>ADDRESS: 102002.00</p>		<p>DATE</p> <p>DATE: 5/9/07</p>	
NO.	DATE	DESCRIPTION															
1	5/9/07	ISSUED FOR PERMIT															
2	5/9/07	ISSUED FOR PERMIT															
3	5/9/07	ISSUED FOR PERMIT															
<p>DESIGNER INFORMATION</p> <p>DESIGNER: BALLANTINE ASSOCIATES, P.A.</p> <p>ADDRESS: 102002.00</p>		<p>SCALE</p> <p>SCALE: 1" = 10'</p>		<p>PROJECT INFORMATION</p> <p>PROJECT: FIELDSTONE</p> <p>PROPERTY: JAMES DIXON PROPERTY</p> <p>COUNTY: CHARLES COUNTY, VA</p>													
<p>DATE</p> <p>DATE: 5/9/07</p>		<p>PROJECT INFORMATION</p> <p>PROJECT: FIELDSTONE</p> <p>PROPERTY: JAMES DIXON PROPERTY</p> <p>COUNTY: CHARLES COUNTY, VA</p>															
<p>PRELIMINARY PLAT SUBMITTAL</p>		<p>FIELDSTONE</p> <p>PROPERTY: JAMES DIXON PROPERTY</p> <p>COUNTY: CHARLES COUNTY, VA</p>		<p>SHEET #</p> <p>CD 7</p>													

