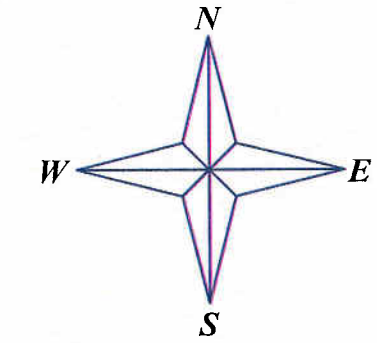
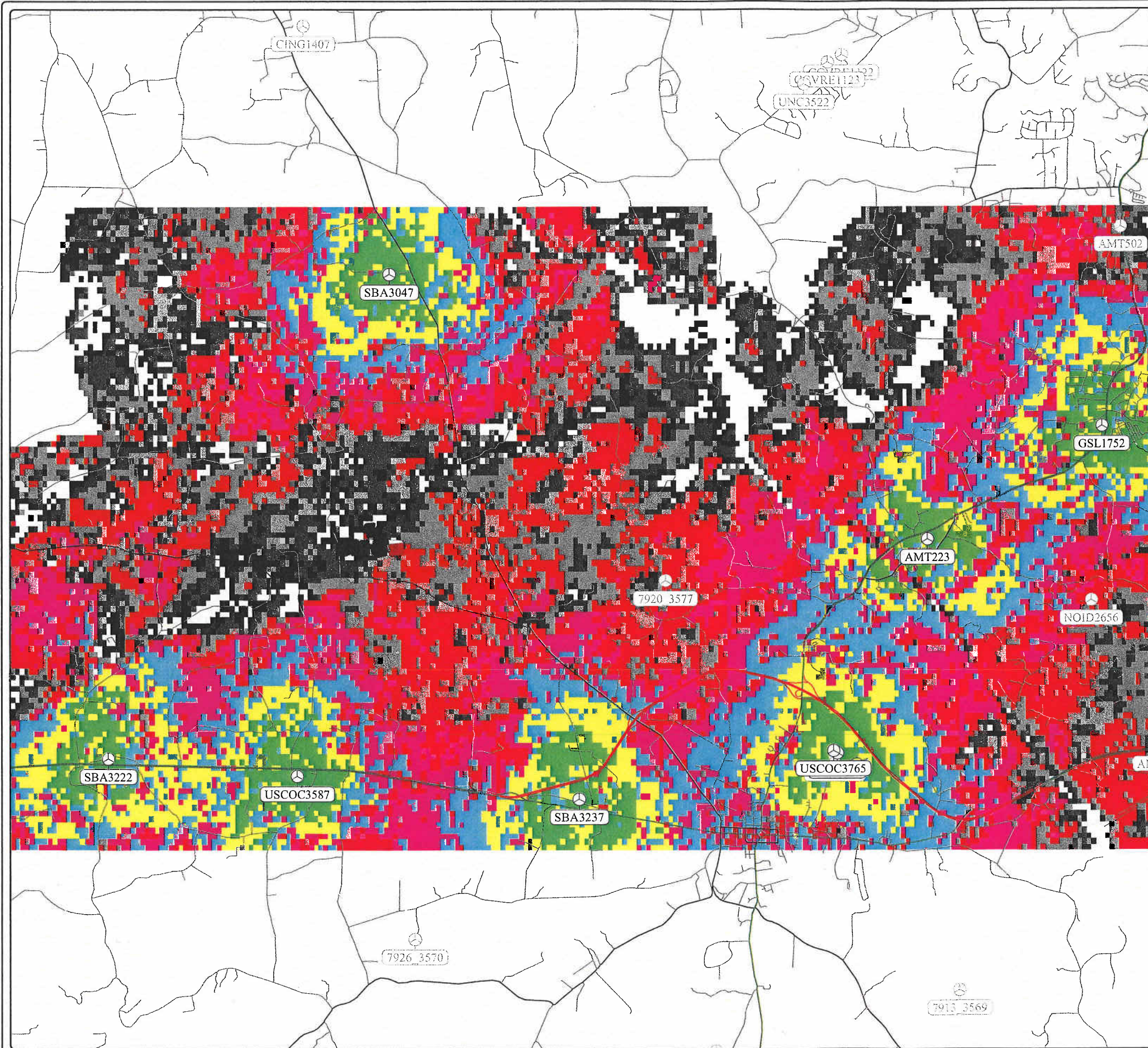
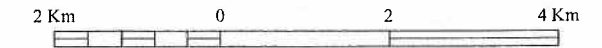


copied or disclosed without permission.
 CelPlan Technologies, and may not be reproduced.
 All information in this document is proprietary to



Scale 1:88,365



Forward Coverage Prediction

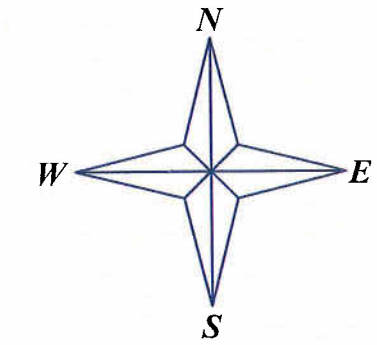
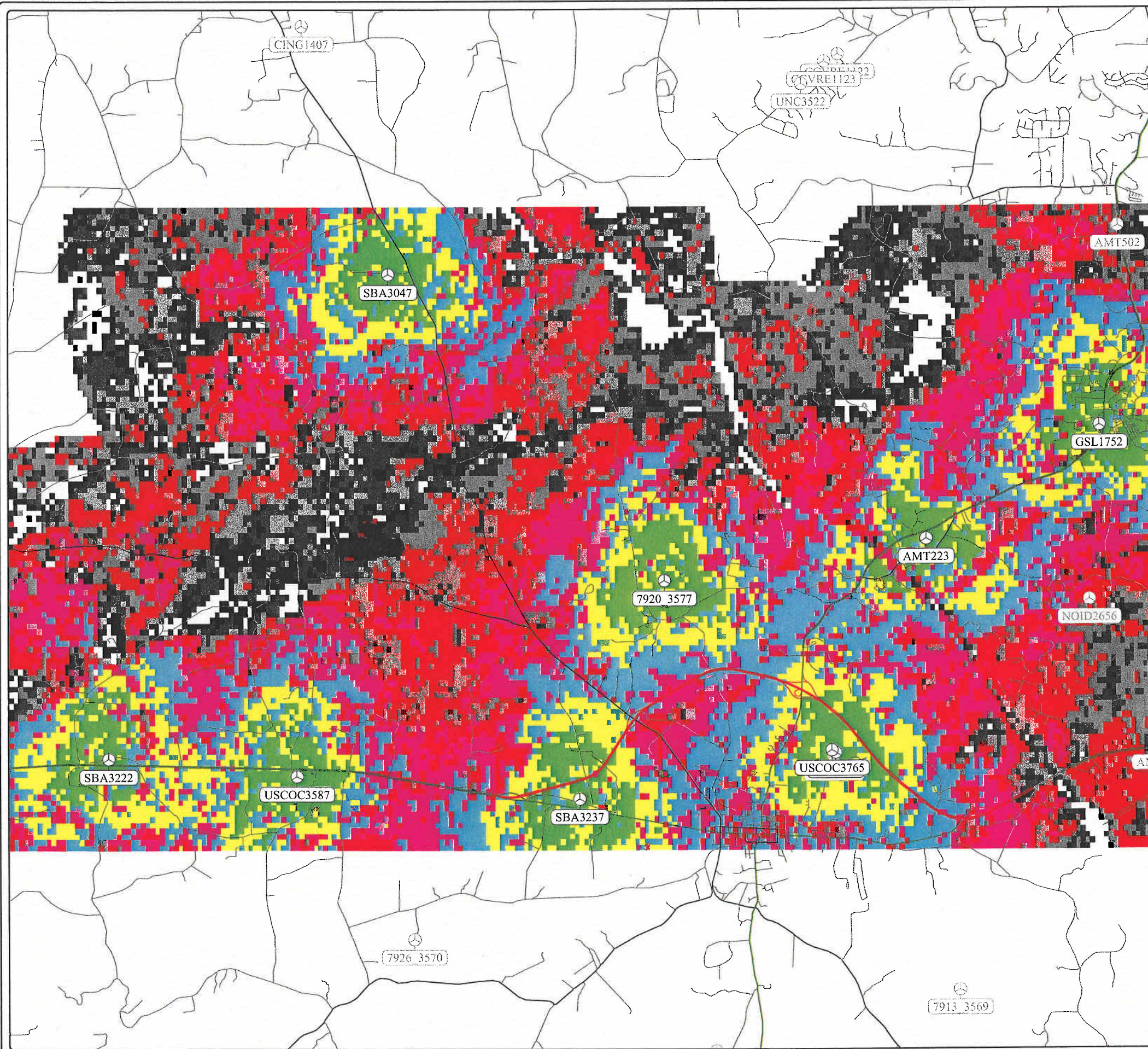
- Signal Level \geq -65 dBm
- Signal Level \geq -70 dBm
- Signal Level \geq -75 dBm
- Signal Level \geq -80 dBm
- Signal Level \geq -85 dBm
- Signal Level \geq -90 dBm
- Signal Level \geq -95 dBm
- Signal Level \geq -100 dBm

Long term fading margin: 90 % - Area
 Subscriber antenna gain: 0 dBd - Antenna height: 1.5 m
 Human body attenuation: 4 dB - Penetration attenuation: 2 dB

Composite Forward Prediction

System:	GSM	Service Class:	In Car	Phase:	2006
Printing:	11/2/2006 1:21 PM	Project:	NSD		

copied or disclosed without permission.
 CelPlan Technologies, and may not be reproduced.
 All information in this document is proprietary to



Scale 1:88,365



Forward Coverage Prediction

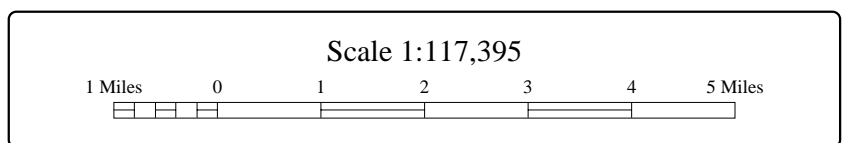
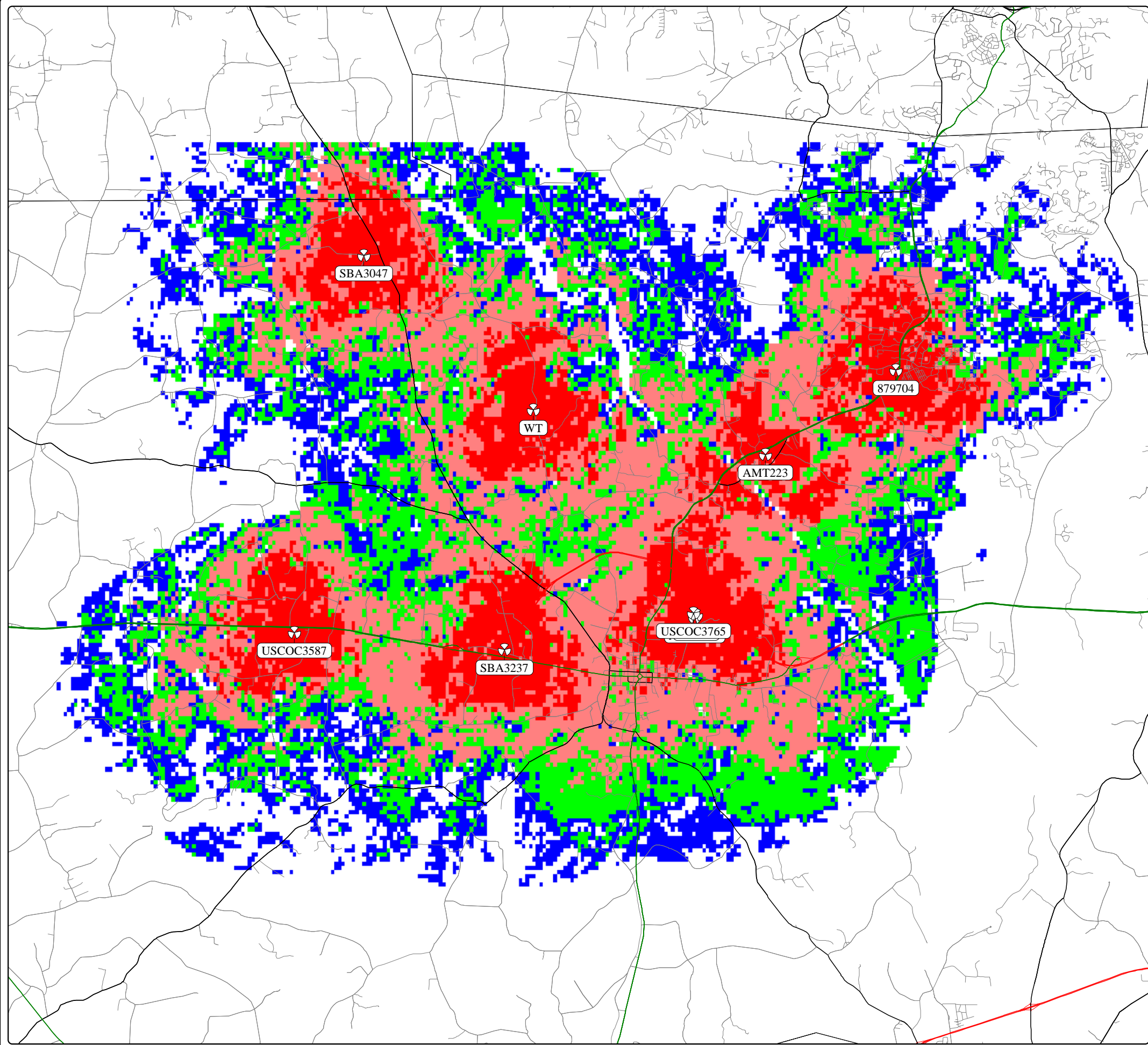
- Signal Level \geq -65 dBm
- Signal Level \geq -70 dBm
- Signal Level \geq -75 dBm
- Signal Level \geq -80 dBm
- Signal Level \geq -85 dBm
- Signal Level \geq -90 dBm
- Signal Level \geq -95 dBm
- Signal Level \geq -100 dBm

Long term fading margin: 90 % - Area
 Subscriber antenna gain: 0 dBd - Antenna height: 1.5 m
 Human body attenuation: 4 dB - Penetration attenuation: 2 dB

Composite Forward Prediction

System:	GSM	Service Class:	In Car	Phase:	2006
Printing:	11/2/2006 1:23 PM	Project:	NSD		

copied or disclosed without permission.
 CellPlan Technologies, and may not be reproduced.
 All information in this document is proprietary to



Cell Site	Sec	Azimuth (TN)	Down Tilt	Antenna	Height (Ft)	Power (W ERP)	Traffic Channels	Traffic (Ert)	Bsic	Control Channel
AMT223	A	0°	0°	Disney PCS	147.0	200.0	1	2.273	00	
	B	120°	0°	Disney PCS	147.0	200.0	1	2.273	00	
	C	240°	0°	Disney PCS	147.0	200.0	1	2.273	00	
AMT1003	A	0°	0°	Disney PCS	400.3	200.0	1	2.273	00	
	B	120°	0°	Disney PCS	400.3	200.0	1	2.273	00	
	C	240°	0°	Disney PCS	400.3	200.0	1	2.273	00	
879704	A	0°	0°	Disney PCS	175.2	200.0	1	2.273	00	
	B	120°	0°	Disney PCS	175.2	200.0	1	2.273	00	
	C	240°	0°	Disney PCS	175.2	200.0	1	2.273	00	
879692	A	0°	0°	Disney PCS	197.2	200.0	1	2.273	00	
	B	120°	0°	Disney PCS	197.2	200.0	1	2.273	00	
	C	240°	0°	Disney PCS	197.2	200.0	1	2.273	00	
SBA3047	A	0°	0°	Disney PCS	190.0	200.0	1	2.273	00	
	B	120°	0°	Disney PCS	190.0	200.0	1	2.273	00	
	C	240°	0°	Disney PCS	190.0	200.0	1	2.273	00	
SBA3237	A	0°	0°	Disney PCS	300.2	200.0	1	2.273	00	
	B	120°	0°	Disney PCS	300.2	200.0	1	2.273	00	
	C	240°	0°	Disney PCS	300.2	200.0	1	2.273	00	
USCOC3587	A	0°	0°	Disney PCS	180.1	200.0	1	2.273	00	
	B	120°	0°	Disney PCS	180.1	200.0	1	2.273	00	
	C	240°	0°	Disney PCS	180.1	200.0	1	2.273	00	
USCOC3765	A	0°	0°	Disney PCS	310.0	200.0	1	2.273	00	
	B	120°	0°	Disney PCS	310.0	200.0	1	2.273	00	
	C	240°	0°	Disney PCS	310.0	200.0	1	2.273	00	
WT	A	0°	0°	Disney PCS	149.9	200.0	1	2.273	00	
	B	120°	0°	Disney PCS	149.9	200.0	1	2.273	00	
	C	240°	0°	Disney PCS	149.9	200.0	1	2.273	00	

Forward Coverage Prediction

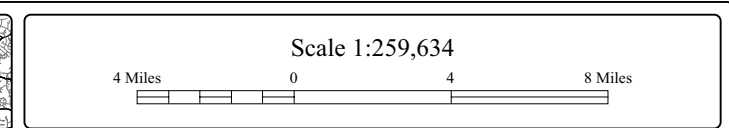
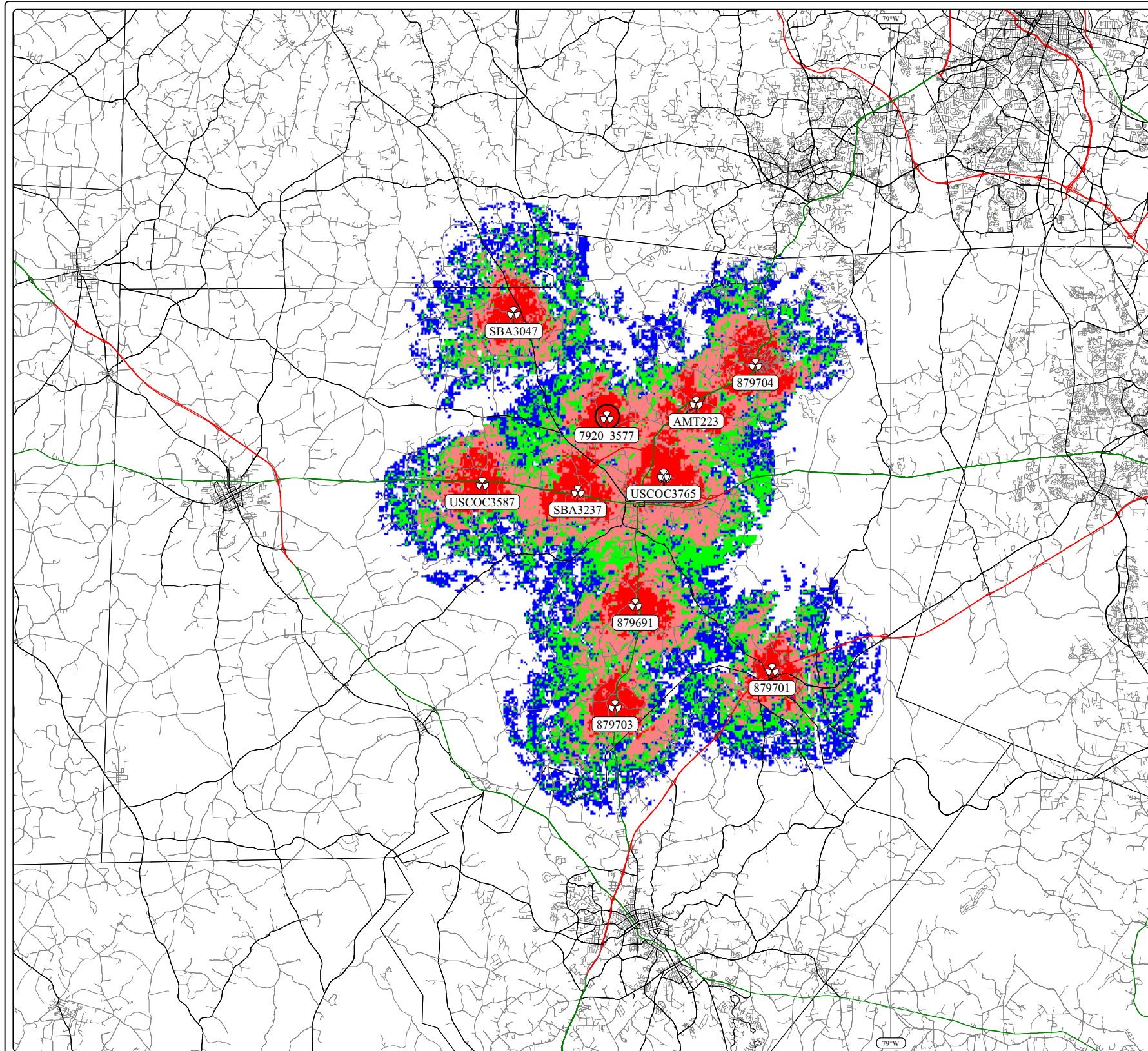
- Signal Level \geq -72 dBm
- Signal Level \geq -80 dBm
- Signal Level \geq -85 dBm
- Signal Level \geq -91 dBm

Long term fading margin: 90 % - Area
 Subscriber antenna gain: 0 dBd - Antenna height: 4.9 Ft
 Human body attenuation: 4 dB - Penetration attenuation: 2 dB

Composite Forward Prediction

System:	GSM	Service Class:	In Car	Phase:	2006
Printing:	7/27/2007 8:30 AM		Project:	NSD	

Copied or disclosed without permission
 Copyright Technologies, and may not be reproduced.
 All information in this document is proprietary to



Existing Crown Towers			
BU #	Twr Height	Carrier	Antenna Height
879704	200'	Sprint	198'
		Cingular	187'
		SunCom	178'
		Alltell	167'
		Nextel	155'
879703	190'	Verizon	146'
		Cingular	188'
		SunCom	180'
		Verizon	170'
		Sprint	160'
879701	190'	Sprint	189'
		SunCom	182'
		Cingular	172'
		Alltell	156'
		Verizon	142'
879692	190'	Sprint	190'
		Nextel	180'
879691	190'	Cingular	190'
		Sprint	178'
		SunCom	163'
		Verizon	154'

Towers within 6 mile radius	
Site name	Twr Height
879704	200'
sba3047	190'
sba3237	300'
USCOC3587	180'
USCOC3765	310'
AMT223	150'

Subject Site Name	Twr Height Max	Tower Type
7920_3577	199'	Self Support

- Signal Level \geq -72 dBm
- Signal Level \geq -80 dBm
- Signal Level \geq -85 dBm
- Signal Level \geq -91 dBm

Long term fading margin: 90 % - Area
 Subscriber antenna gain: 0 dBd - Antenna height: 4.9 Ft
 Human body attenuation: 4 dB - Penetration attenuation: 2 dB

Composite Forward Prediction		
System:	Service Class:	Phase:
GSM	In Car	2006
Printing:	Project:	
5/16/2007 2:50 PM	NSD	