

Scale 1:268,124



| Existing Crown Towers BU # | Twr Height | Carrier | Antenna Height |
|-------------------------------|------------|----------|----------------|
| 879704 | 200' | Sprint | 198' |
| | | Cingular | 187' |
| | | SunCom | 178' |
| | | Alltel | 167' |
| | | Nextel | 155' |
| | | Verizon | 146' |
| 879703 | 190' | Cingular | 188' |
| | | SunCom | 180' |
| | | Verizon | 170' |
| 879701 | 190' | Sprint | 160' |
| | | Sprint | 189' |
| | | SunCom | 182' |
| | | Cingular | 172' |
| | | Alltel | 156' |
| | | Verizon | 142' |
| 879692 | 190' | Sprint | 190' |
| | | Nextel | 180' |
| 879691 | 190' | Cingular | 190' |
| | | Sprint | 178' |
| | | SunCom | 163' |
| | | Verizon | 154' |

Towers within 6 mile radius

| Site name | Twr Height |
|-----------|------------|
| 879704 | 200' |
| AMT433 | 185' |
| AMT520 | 200' |
| AMT579 | 230' |
| AMT856 | 301' |
| NOID2656 | 230' |
| SBA3071 | 195' |
| SBA3076 | 195' |

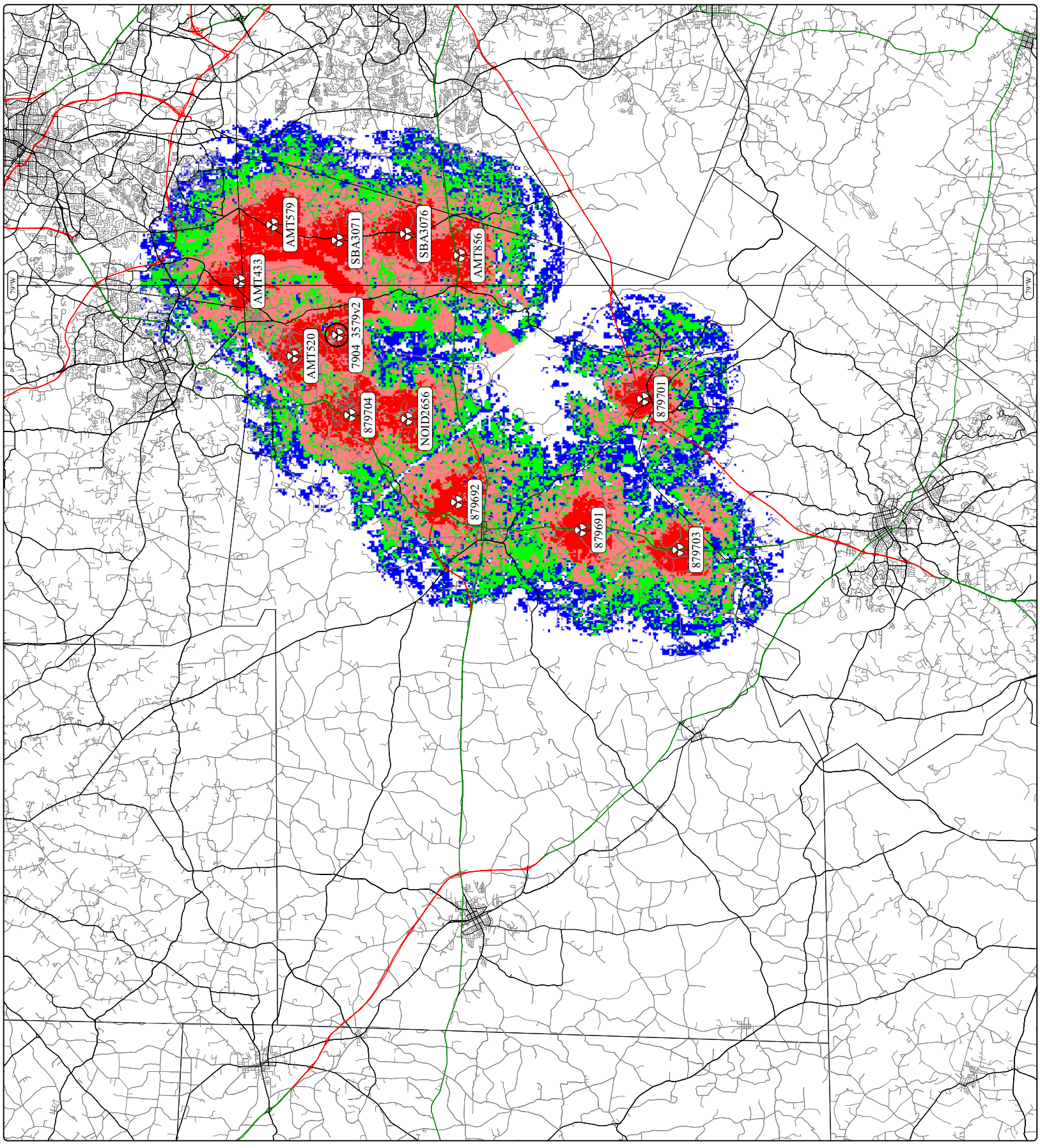
| Subject Site Name | Twr Height Max | Tower Type |
|-------------------|----------------|--------------|
| 7904_3579v2 | 199' | Self Support |

- Signal Level >= -72 dBm
- Signal Level >= -80 dBm
- Signal Level >= -85 dBm
- Signal Level >= -91 dBm

Long term fading margin: 90% - Area
 Subscriber antenna gain: 0 dBd - Antenna height: 4.9 Ft
 Human body attenuation: 4 dB - Penetration attenuation: 2 dB

Composite Forward Prediction

| | | | | | |
|-----------|-------------------|----------------|----------|--------|------|
| System: | GSM | Service Class: | In Car | Phase: | 2006 |
| Printing: | 5/17/2007 8:37 AM | | Project: | NSD | |



copied or disclosed without permission.
 CelPlan Technologies, and may not be reproduced.
 All information in this document is proprietary to