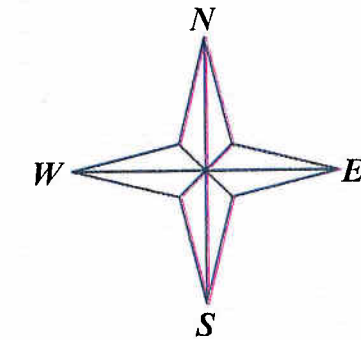
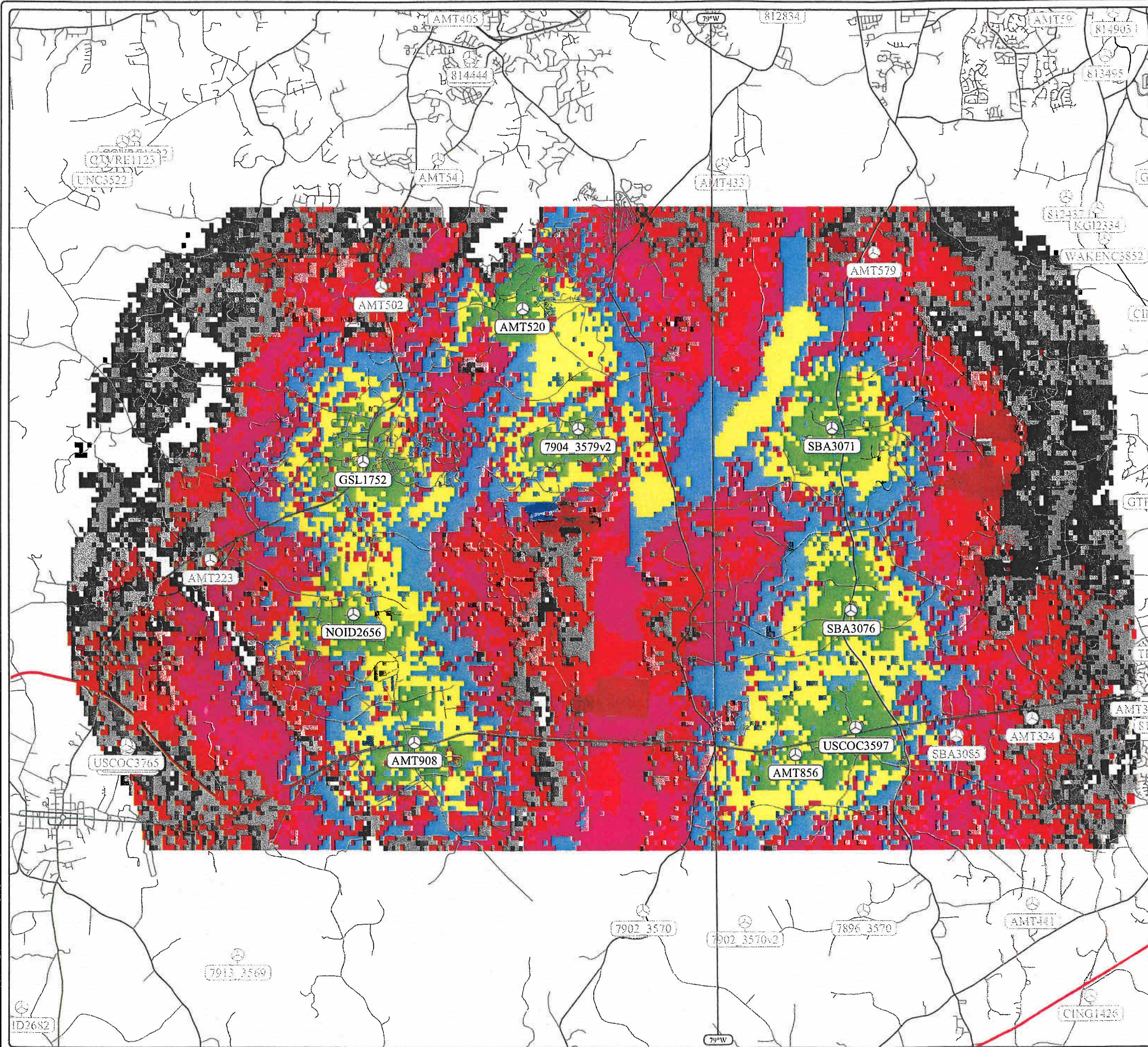






copied or disclosed without permission.  
 CellPlan Technologies, and may not be reproduced.  
 All information in this document is proprietary to



Scale 1:100,740  
 2.5 Km 0 2.5 5 Km

**Forward Coverage Prediction**

- Signal Level  $\geq$  -65 dBm
- Signal Level  $\geq$  -70 dBm
- Signal Level  $\geq$  -75 dBm
- Signal Level  $\geq$  -80 dBm
- Signal Level  $\geq$  -85 dBm
- Signal Level  $\geq$  -90 dBm
- Signal Level  $\geq$  -95 dBm
- Signal Level  $\geq$  -100 dBm

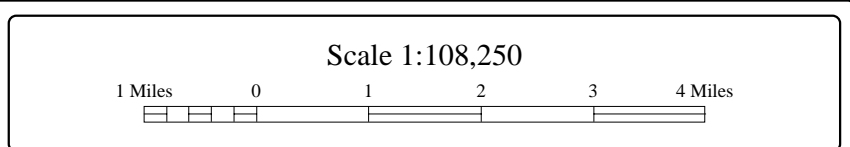
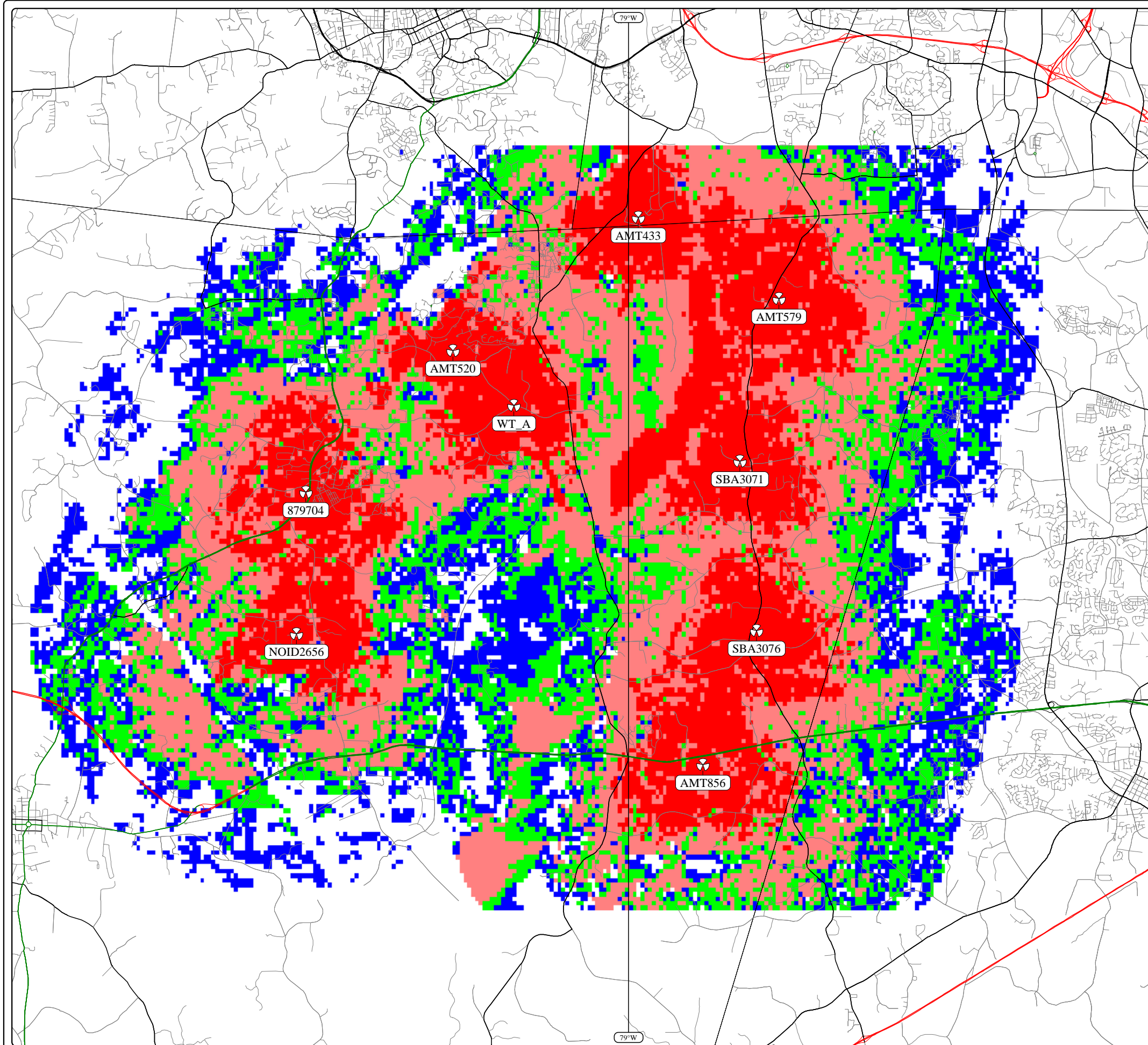
Long term fading margin: 90% - Area  
 Subscriber antenna gain: 0 dBd - Antenna height: 1.5 m  
 Human body attenuation: 4 dB - Penetration attenuation: 2 dB

**Composite Forward Prediction**

System:	GSM	Service Class:	In Car	Phase:	2006
Printing:	11/3/2006 10:11 AM	Project:	NSD		



copied or disclosed without permission.  
 CellPlan Technologies, and may not be reproduced.  
 All information in this document is proprietary to



Cell Site	Sec	Azimuth (TN)	Down Tilt	Antenna	Height (Ft)	Power (W ERP)	Traffic Channels	Traffic (Erl)	Bsic	Control Channel
AMT433	A	0°	0°	Disney PCS	183.0	200.0	1	2.273	00	
	B	120°	0°	Disney PCS	183.0	200.0	1	2.273	00	
	C	240°	0°	Disney PCS	183.0	200.0	1	2.273	00	
AMT520	A	0°	0°	Disney PCS	199.1	200.0	1	2.273	00	
	B	120°	0°	Disney PCS	199.1	200.0	1	2.273	00	
	C	240°	0°	Disney PCS	199.1	200.0	1	2.273	00	
AMT579	A	0°	0°	Disney PCS	230.0	200.0	1	2.273	00	
	B	120°	0°	Disney PCS	230.0	200.0	1	2.273	00	
	C	240°	0°	Disney PCS	230.0	200.0	1	2.273	00	
AMT856	A	0°	0°	Disney PCS	301.2	200.0	1	2.273	00	
	B	120°	0°	Disney PCS	301.2	200.0	1	2.273	00	
	C	240°	0°	Disney PCS	301.2	200.0	1	2.273	00	
879704	A	0°	0°	Disney PCS	175.2	200.0	1	2.273	00	
	B	120°	0°	Disney PCS	175.2	200.0	1	2.273	00	
	C	240°	0°	Disney PCS	175.2	200.0	1	2.273	00	
NOID2656	A	0°	0°	Disney PCS	230.0	200.0	1	2.273	00	
	B	120°	0°	Disney PCS	230.0	200.0	1	2.273	00	
	C	240°	0°	Disney PCS	230.0	200.0	1	2.273	00	
SBA3071	A	0°	0°	Disney PCS	195.2	200.0	1	2.273	00	
	B	120°	0°	Disney PCS	195.2	200.0	1	2.273	00	
	C	240°	0°	Disney PCS	195.2	200.0	1	2.273	00	
SBA3076	A	0°	0°	Disney PCS	195.2	200.0	1	2.273	00	
	B	120°	0°	Disney PCS	195.2	200.0	1	2.273	00	
	C	240°	0°	Disney PCS	195.2	200.0	1	2.273	00	
WT_A	A	0°	0°	Disney PCS	185.7	200.0	1	2.273	00	
	B	120°	0°	Disney PCS	185.7	200.0	1	2.273	00	
	C	240°	0°	Disney PCS	185.7	200.0	1	2.273	00	

**Forward Coverage Prediction**

- Signal Level >= -72 dBm
- Signal Level >= -80 dBm
- Signal Level >= -85 dBm
- Signal Level >= -91 dBm

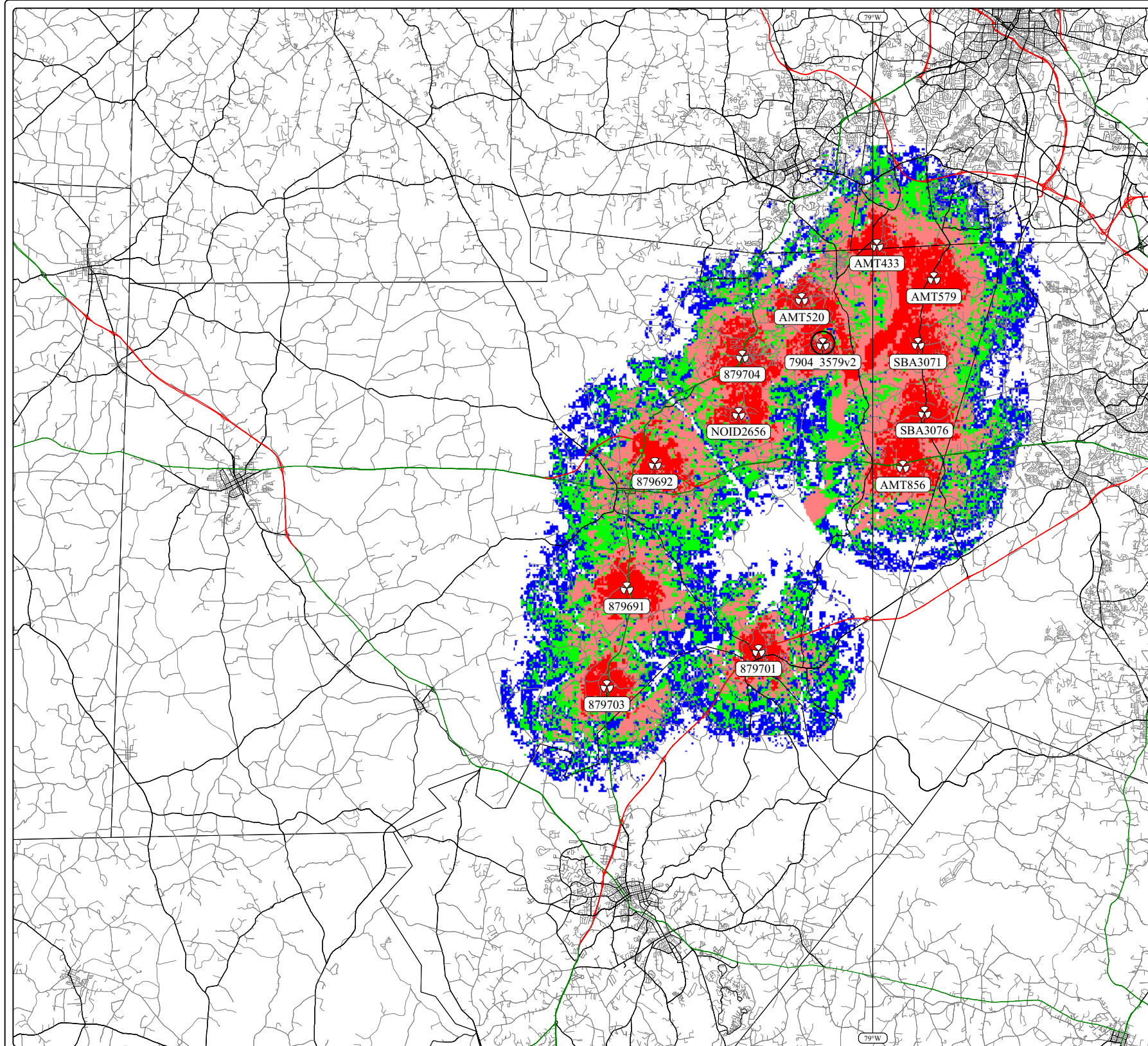
Long term fading margin: 90 % - Area  
 Subscriber antenna gain: 0 dBd - Antenna height: 4.9 Ft  
 Human body attenuation: 4 dB - Penetration attenuation: 2 dB

**Composite Forward Prediction**

System:	GSM	Service Class:	In Car	Phase:	2006
Printing:	7/27/2007 8:51 AM		Project:	NSD	



Copied or disclosed without permission.  
 Copyright Technologies, and may not be reproduced.  
 All information in this document is proprietary to



Scale 1:268,124



**Existing Crown Towers**

BU #	Twr Height	Carrier	Antenna Height
879704	200'	Sprint	198'
		Cingular	187'
		SunCom	178'
		Alltell	167'
		Nextel	155'
879703	190'	Verizon	146'
		Cingular	188'
		SunCom	180'
879701	190'	Verizon	170'
		Sprint	160'
		Sprint	189'
		SunCom	182'
		Cingular	172'
879692	190'	Alltell	156'
		Verizon	142'
		Sprint	190'
879691	190'	Nextel	180'
		Cingular	190'
		Sprint	178'
		SunCom	163'
		Verizon	154'

**Towers within 6 mile radius**

Site name	Twr Height
879704	200'
AMT433	185'
AMT520	200'
AMT579	230'
AMT856	301'
NOID2656	230'
SBA3071	195'
SBA3076	195'

Subject Site Name	Twr Height Max	Tower Type
7904_3579v2	199'	Self Support

- Signal Level >= -72 dBm
- Signal Level >= -80 dBm
- Signal Level >= -85 dBm
- Signal Level >= -91 dBm

Long term fading margin: 90 % - Area  
 Subscriber antenna gain: 0 dBd - Antenna height: 4.9 Ft  
 Human body attenuation: 4 dB - Penetration attenuation: 2 dB

**Composite Forward Prediction**

System:	Service Class:	Phase:
GSM	In Car	2006
Printing:	Project:	
5/17/2007 8:37 AM	NSD	