

Scale 1:259,657



Existing Crown Towers BU #	Twr Height	Carrier	Antenna Height
879704	200'	Sprint	198'
		Cingular	187'
		SunCom	178'
		Alltel	167'
		Nextel	155'
		Verizon	146'
879703	190'	Cingular	188'
		SunCom	180'
		Verizon	170'
879701	190'	Sprint	160'
		Sprint	189'
		SunCom	182'
		Cingular	172'
		Alltel	156'
879692	190'	Verizon	142'
		Sprint	190'
		Nextel	180'
879691	190'	Cingular	190'
		Sprint	178'
		SunCom	163'
		Verizon	154'

Towers within 6 mile radius

Site name	Twr Height
CBCC11106	1,698'
CPLC1523	360'
881299	180'
NoID2791	346'
SBA3171	250'

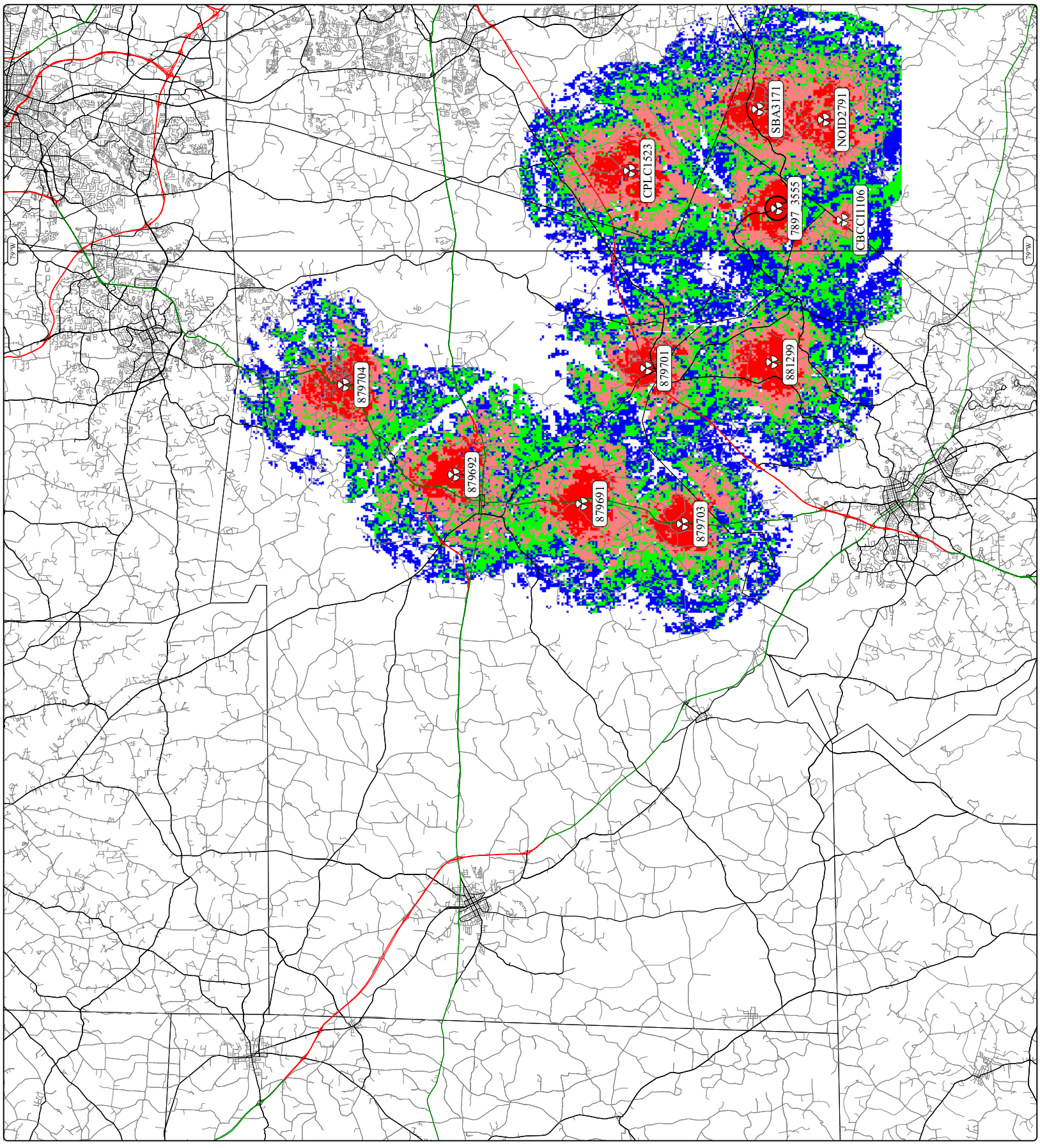
Subject Site Name	Twr Height Max	Tower Type
7897_3555	199'	Self Support

1

- Signal Level  $\geq$  -72 dBm
- Signal Level  $\geq$  -80 dBm
- Signal Level  $\geq$  -85 dBm
- Signal Level  $\geq$  -91 dBm

Long term fading margin: 90% - Area  
 Subscriber antenna gain: 0 dBd - Antenna height: 4.9 Ft  
 Human body attenuation: 4 dB - Penetration attenuation: 2 dB

Composite Forward Prediction		
System:	GSM	Phase:
Service Class:	In Car	2006
Printing:	5/16/2007 3:54 PM	Project:
		NSD



copied or disclosed without permission.  
 CelPlan Technologies, and may not be reproduced.  
 All information in this document is proprietary to