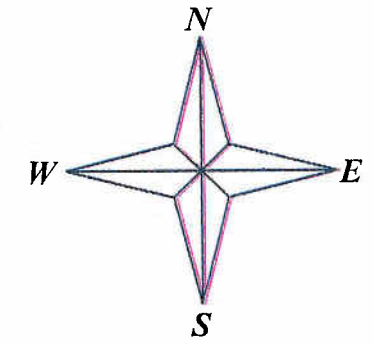
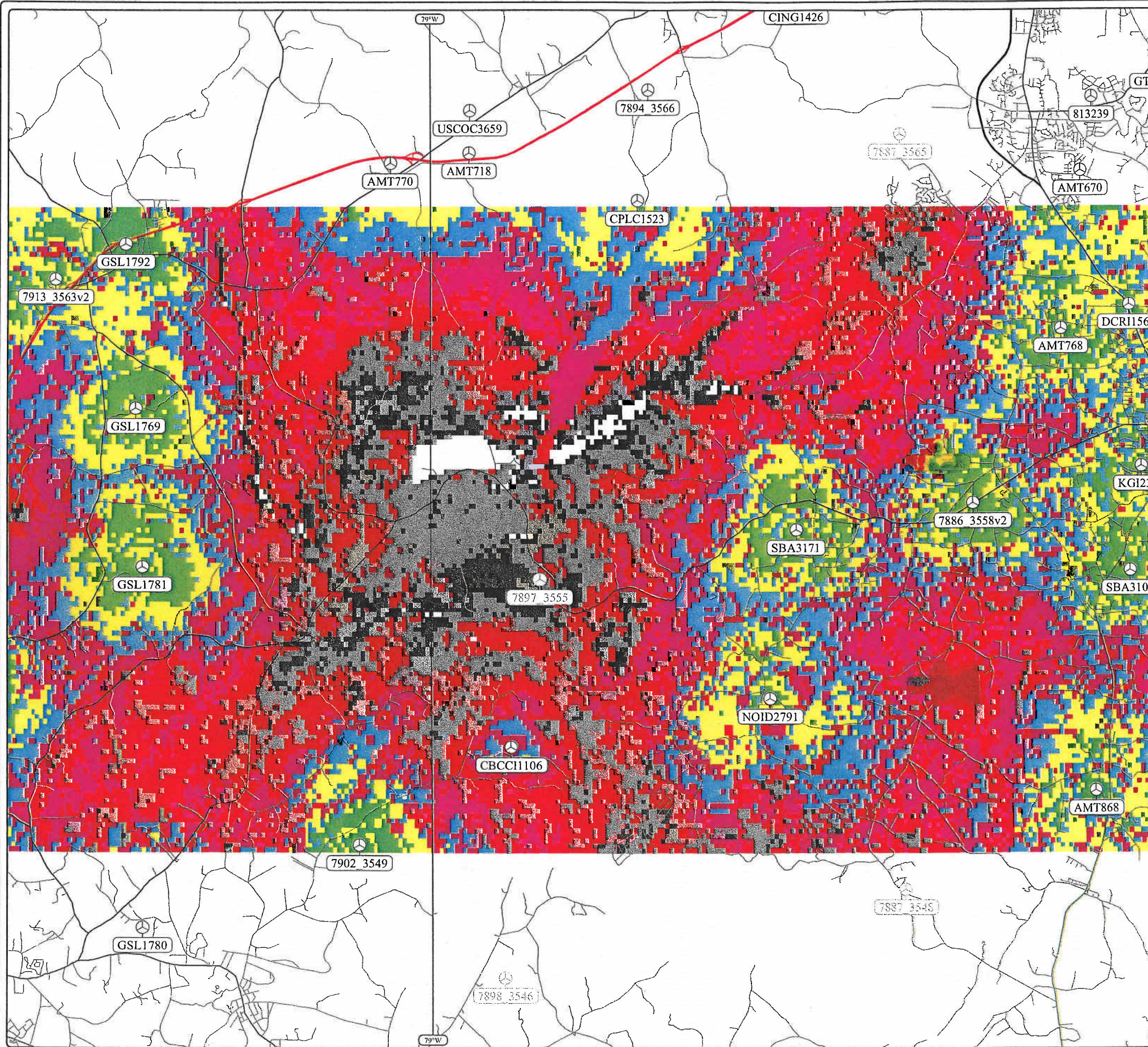
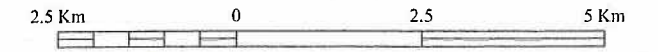


Copyright or disclosed without permission.
 CellPlan Technologies, and may not be reproduced.
 All information in this document is proprietary to



Scale 1:101,956



Forward Coverage Prediction

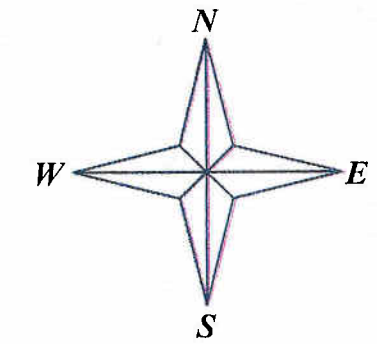
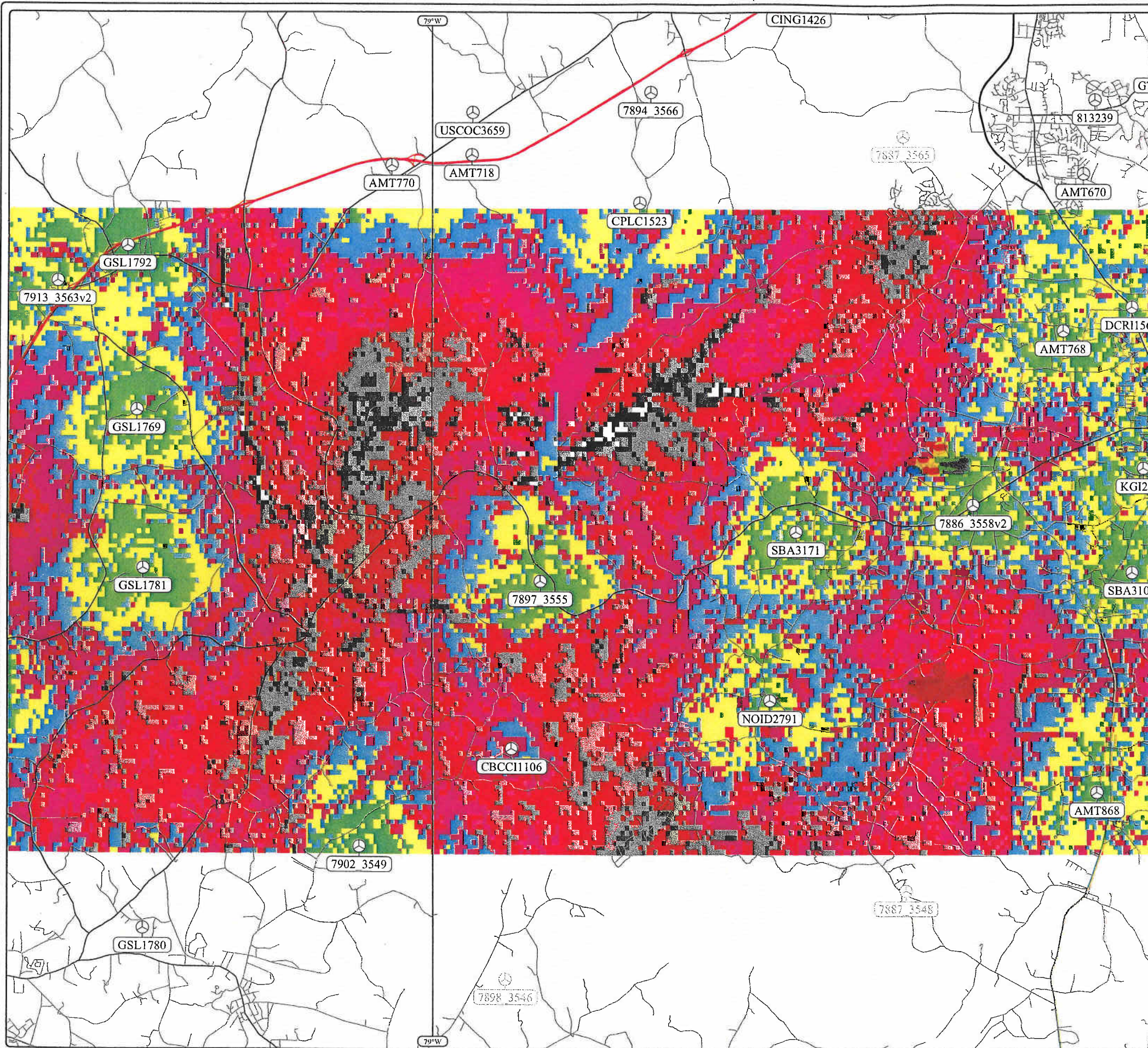
- Signal Level \geq -65 dBm
- Signal Level \geq -70 dBm
- Signal Level \geq -75 dBm
- Signal Level \geq -80 dBm
- Signal Level \geq -85 dBm
- Signal Level \geq -90 dBm
- Signal Level \geq -95 dBm
- Signal Level \geq -100 dBm

Long term fading margin: 90 % - Area
 Subscriber antenna gain: 0 dBd - Antenna height: 1.5 m
 Human body attenuation: 4 dB - Penetration attenuation: 2 dB

Composite Forward Prediction

System: GSM	Service Class: In Car	Phase: 2006
Printing: 11/17/2006 11:05 AM	Project: NSD	

copied or disclosed without permission.
 CellPlan Technologies, and may not be reproduced.
 All information in this document is proprietary to



Scale 1:101,956
 2.5 Km 0 2.5 5 Km

Forward Coverage Prediction

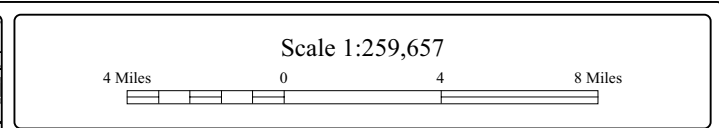
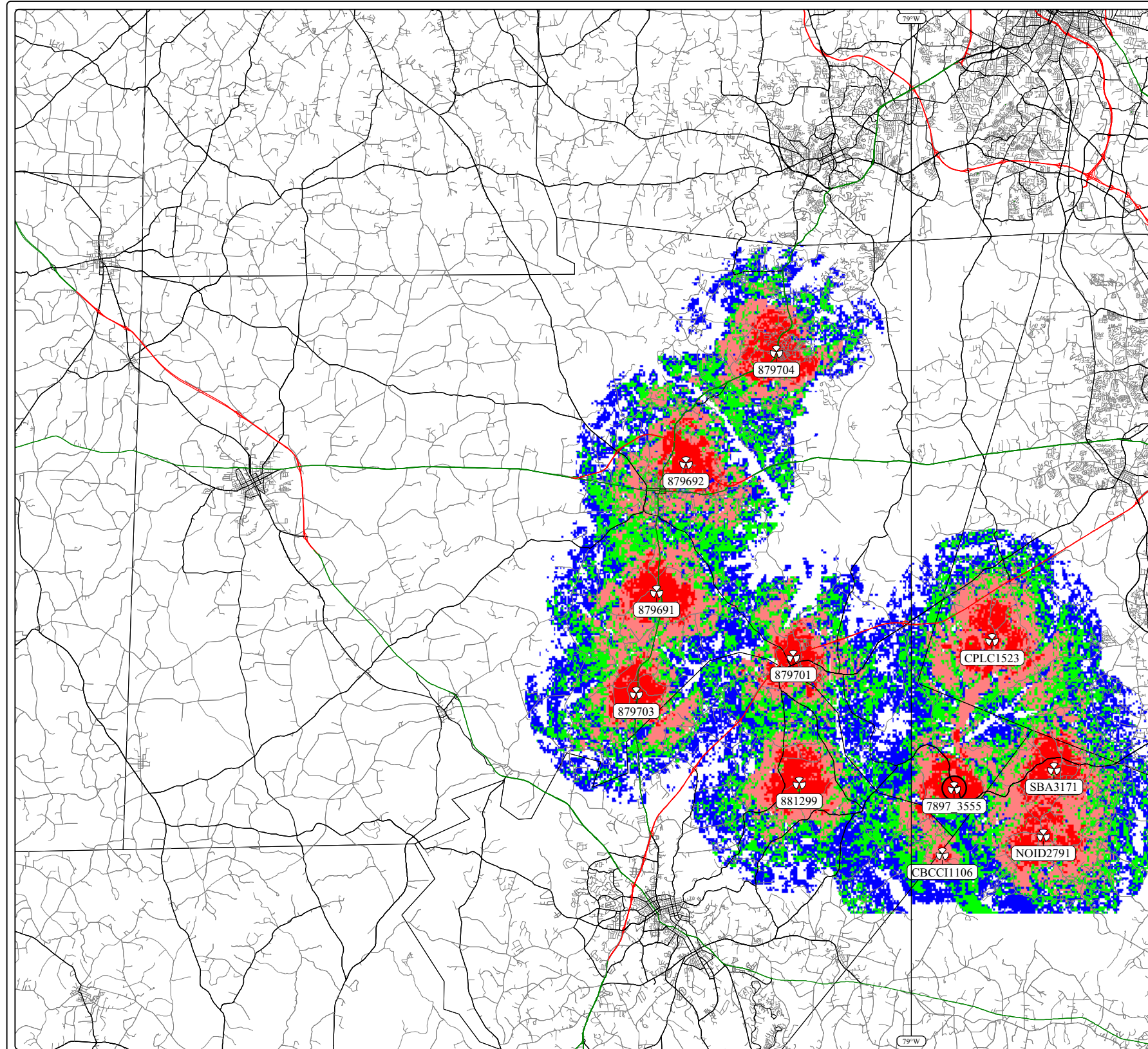
- Signal Level \geq -65 dBm
- Signal Level \geq -70 dBm
- Signal Level \geq -75 dBm
- Signal Level \geq -80 dBm
- Signal Level \geq -85 dBm
- Signal Level \geq -90 dBm
- Signal Level \geq -95 dBm
- Signal Level \geq -100 dBm

Long term fading margin: 90 % - Area
 Subscriber antenna gain: 0 dBd - Antenna height: 1.5 m
 Human body attenuation: 4 dB - Penetration attenuation: 2 dB

Composite Forward Prediction

System: GSM	Service Class: In Car	Phase: 2006
Printing: 11/17/2006 11:13 AM	Project: NSD	

Copied or disclosed without permission.
 Copyright Technologies, and may not be reproduced.
 All information in this document is proprietary to



Existing Crown Towers			
BU #	Twr Height	Carrier	Antenna Height
879704	200'	Sprint	198'
		Cingular	187'
		SunCom	178'
		Alltell	167'
		Nextel	155'
879703	190'	Verizon	146'
		Cingular	188'
		SunCom	180'
		Verizon	170'
		Sprint	160'
879701	190'	Sprint	189'
		SunCom	182'
		Cingular	172'
		Alltell	156'
		Verizon	142'
879692	190'	Sprint	190'
		Nextel	180'
879691	190'	Cingular	190'
		Sprint	178'
		SunCom	163'
		Verizon	154'

Towers within 6 mile radius	
Site name	Twr Height
CBCC11106	1,698'
CPLC1523	360'
881299	180'
Noid2791	346'
SBA3171	250'

Subject Site Name	Twr Height Max	Tower Type
7897_3555	199'	Self Support

■	Signal Level >= -72 dBm
■	Signal Level >= -80 dBm
■	Signal Level >= -85 dBm
■	Signal Level >= -91 dBm

Long term fading margin: 90 % - Area
 Subscriber antenna gain: 0 dBd - Antenna height: 4.9 Ft
 Human body attenuation: 4 dB - Penetration attenuation: 2 dB

Composite Forward Prediction		
System: GSM	Service Class: In Car	Phase: 2006
Printing: 5/16/2007 3:54 PM	Project: NSD	