

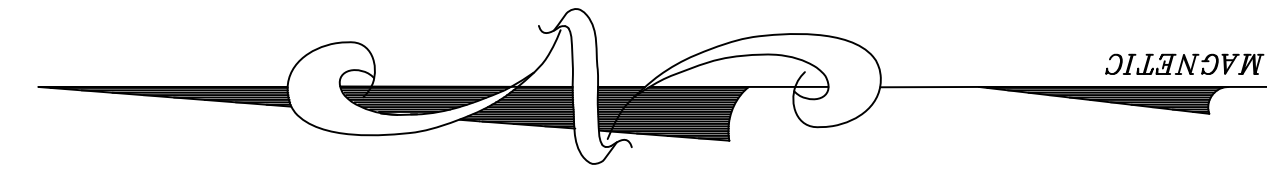
LIGHTING PLAN

AREA LIGHTS / 4 LOCATIONS TO BE:

DUSK TO DAWN, BOXED DOWNWARD, 175 WATT MERCURY VAPOR BY COOPER LIGHTING. BLUE/WHITE COLOR. LIGHTS 22,000 SQ. FT. TWIST LOCK PHOTO CONTROL W/ADJUSTABLE SENSOR. DIE CAST METAL HOUSING. AREA LIGHT TO BE MOUNTED 20' ABOVE GROUND SURFACE. ALL AREA LIGHTS TO BE WIRED INTO MASTER PANEL W/PPOWER OFF SWITCH FOR PERIODS OF NO OCCUPANCY.

PARK SIGN LIGHTING TO BE:

REGENT 75 WATT HALOGEN LIGHT BY COOPER LIGHTING. LIGHT FIXTURE TO BE EQUIPPED W/AUTOMATIC LIGHT SENSOR.



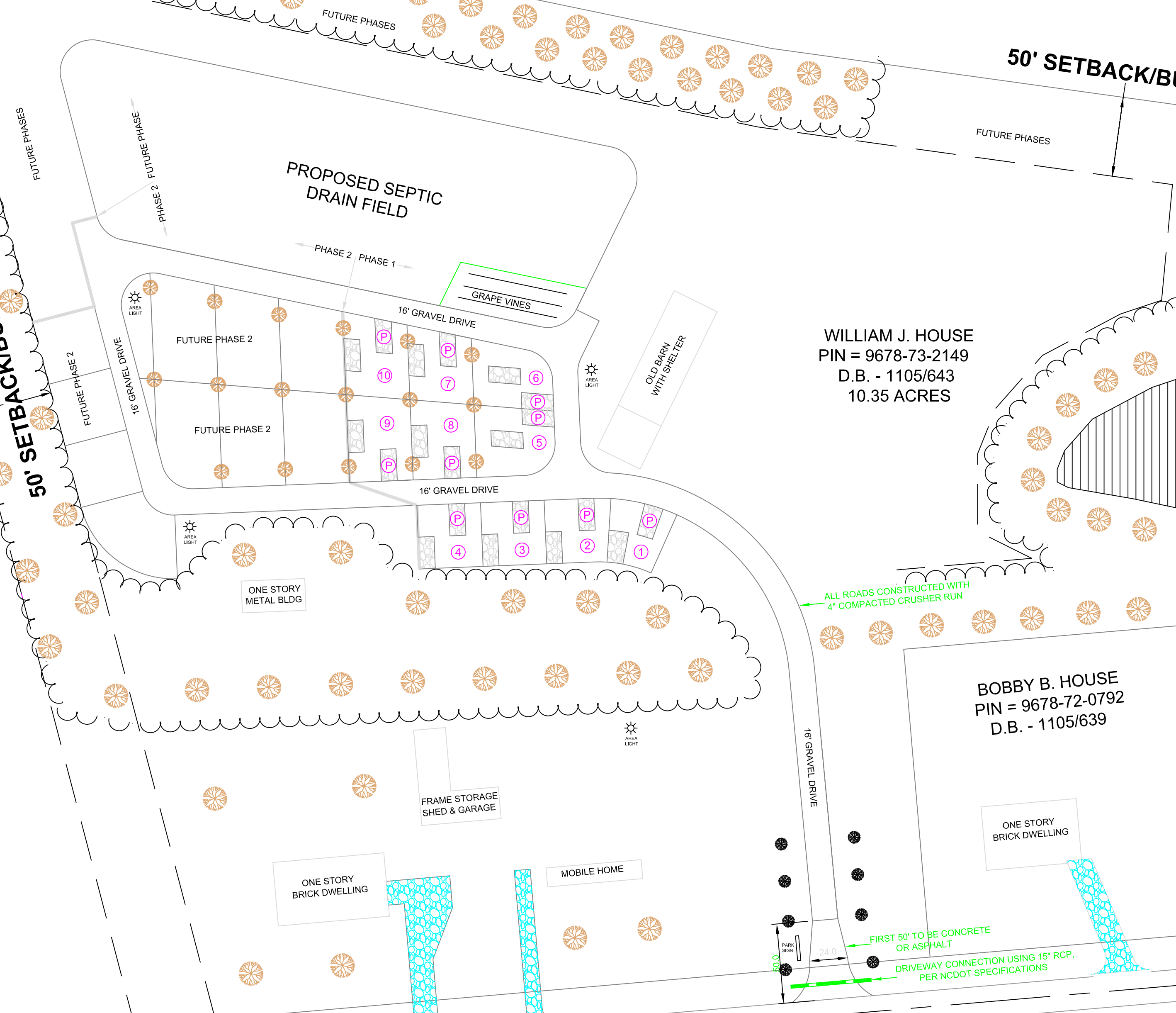
HORACE C. POWELL
PIN = 9678-82-4916
D.B. - 551/672

EVERETT & PEGGY DENNING
PIN = 9678-74-6117
D.B. - 480/509

50' SETBACK/BUFFER (TYP.)

ALL AREAS OF THE 50' BUFFER CONTAIN MATURE PINES, WHITE OAKS AND DOGWOODS. EXCEPT FOR THE NOTED AREA ON THE SOUTHEAST CORNER OF THE PARCEL. THIS BARE AREA WILL BE PLANTED WITH PINES, WHITE OAKS AND DOGWOODS. THEN THE ENTIRE 50' BUFFER WILL BE INTERFILLED WITH MEDIUM AND TALL GROWTH SHRUBS AS SHOWN IN THE LANDSCAPE PLAN.

US HWY #1 (100' R/W)
50' SETBACK/BUFFER



WILLIAM J. HOUSE
PIN = 9678-73-2149
D.B. - 1105/643
10.35 ACRES

BOBBY B. HOUSE
PIN = 9678-72-0792
D.B. - 1105/639

KENNETH F. JEFFRIES
PIN = 9678-72-2458
D.B. - 672/808

THOMAS & DENISE TRAFELET
PIN = 9678-73-1629
D.B. - 1129/646

LANDSCAPE PLAN

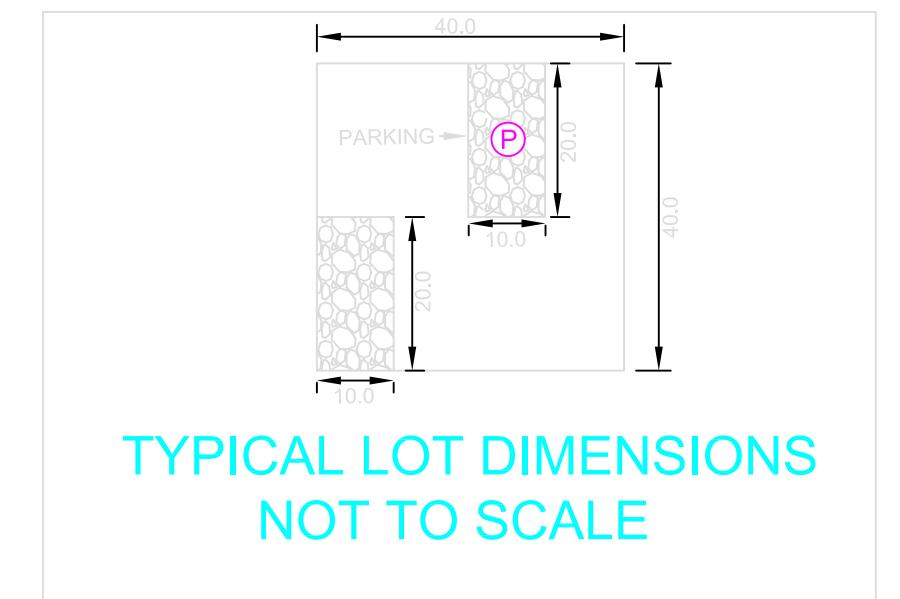
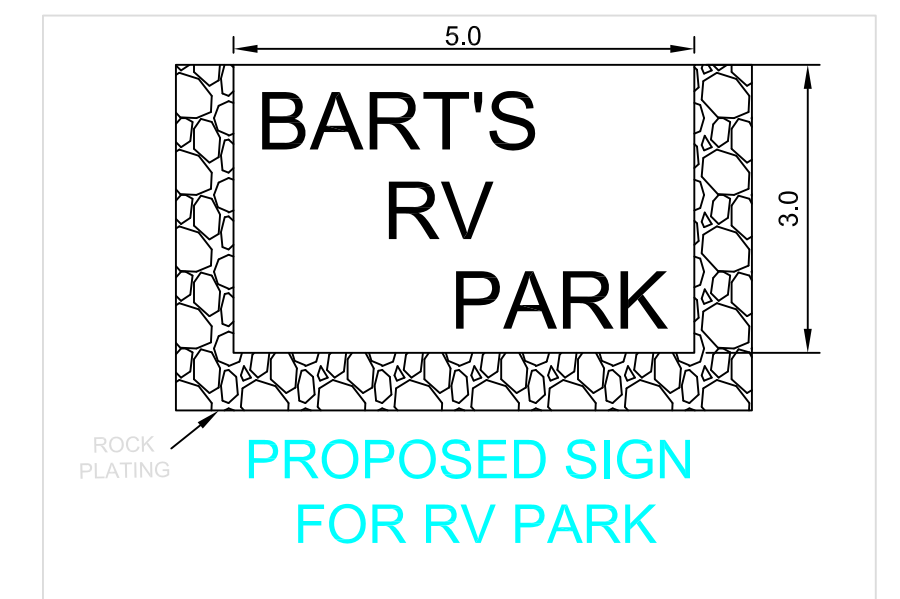
1- EACH RV LOT TO BE SEPERATED BY RED TIPS AND/OR MEDIUM HEIGHT PRIVETTES.

2- ALL 50' BUFFERS ARE CURRENTLY SUPPORTING MATURE WHITE OAKS, PINES AND DOGWOODS, EXCEPT FOR AREA NOTED ON SOUTH EAST CORNER OF PROPERTY. THIS WILL BE PLANTED WITH WHITE OAKS, PINES AND DOGWOODS.

3- ALL BUFFER AREAS WILL BE INTERFILLED WITH MEDIUM AND TALL GROWING SHRUBS CONSISTING OF THE FOLLOWING:

MEDIUM GROWTH	TALL GROWTH
AZALEAS	ZHYZHOU FUCHISA FRINGE FLOWER
YOUNGSTOWN JUNIPER	TEA OLIVE
EMERAL GAIETY EVONYMUS	ROBIN RED HOLLY
ROSE GLOW BARBERRY	BLUE BOY HOLLY
MR. GOLDSTRIKE AUCUBA	MUSKOGEE CRAPE MYRTLE
PARSON'S JUNIPER	NISHIKI WILLOW
OTTO LUYKEN DWARF ENGLISH LAUREL	COMPACTA HOLLEY
SNOW WHITE INDIAN HAWTHORNE	

4- FIRST 100' OF ENTRANCE DRIVE TO BE LINED WITH BRADFORD FLOWERING PEAR TREES ON BOTH SIDES



MICHAEL S. & BRIAN S. FOLEY
PIN = 9678-43-9636
D/B - 1282/105

LOWERY & WEBSTER PROPERTIES
PIN = 9678-62-7543
D.B. - 688/1083

IMPERVIOUS AREAS
PRIOR TO MODIFICATIONS - 2.8% OF ENTIRE SITE
AFTER MODIFICATIONS - 5.9% OF ENTIRE SITE

PROPOSED RV PARK
(TO BE NAMED LATER)

OWNER - WILLIAM JEFFERY HOUSE
LOCATION - CHATHAM COUNTY, MONCURE NC

DRAWN BY: RHB
SCALE: 1" = 50'
DATE: APRIL 26, 2007
JOB NUMBER: 00-0000

CHECKED BY: RNG
SHEET: 1 OF 1
TOTAL ACREAGE: 10.35

