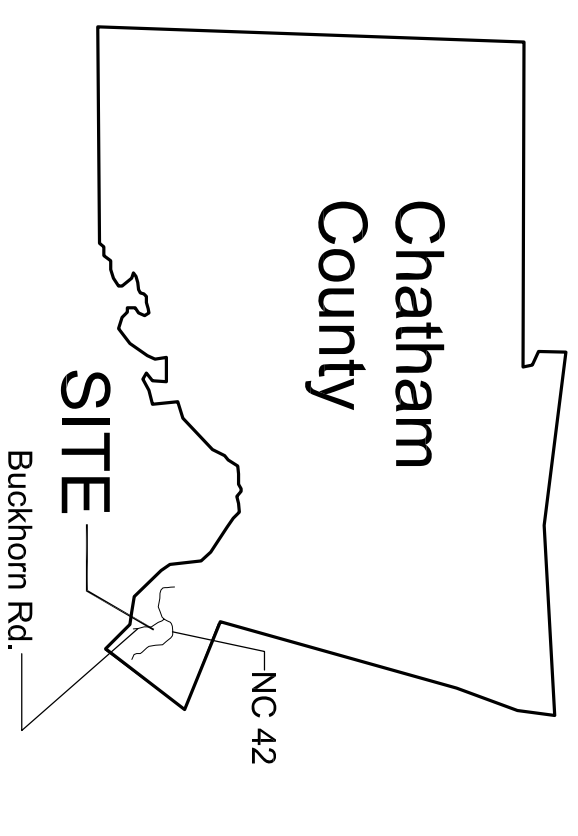


# Austinville

Buckhorn Road, Corinth  
Chatham County, North Carolina

Parcel Number 73961



Vicinity

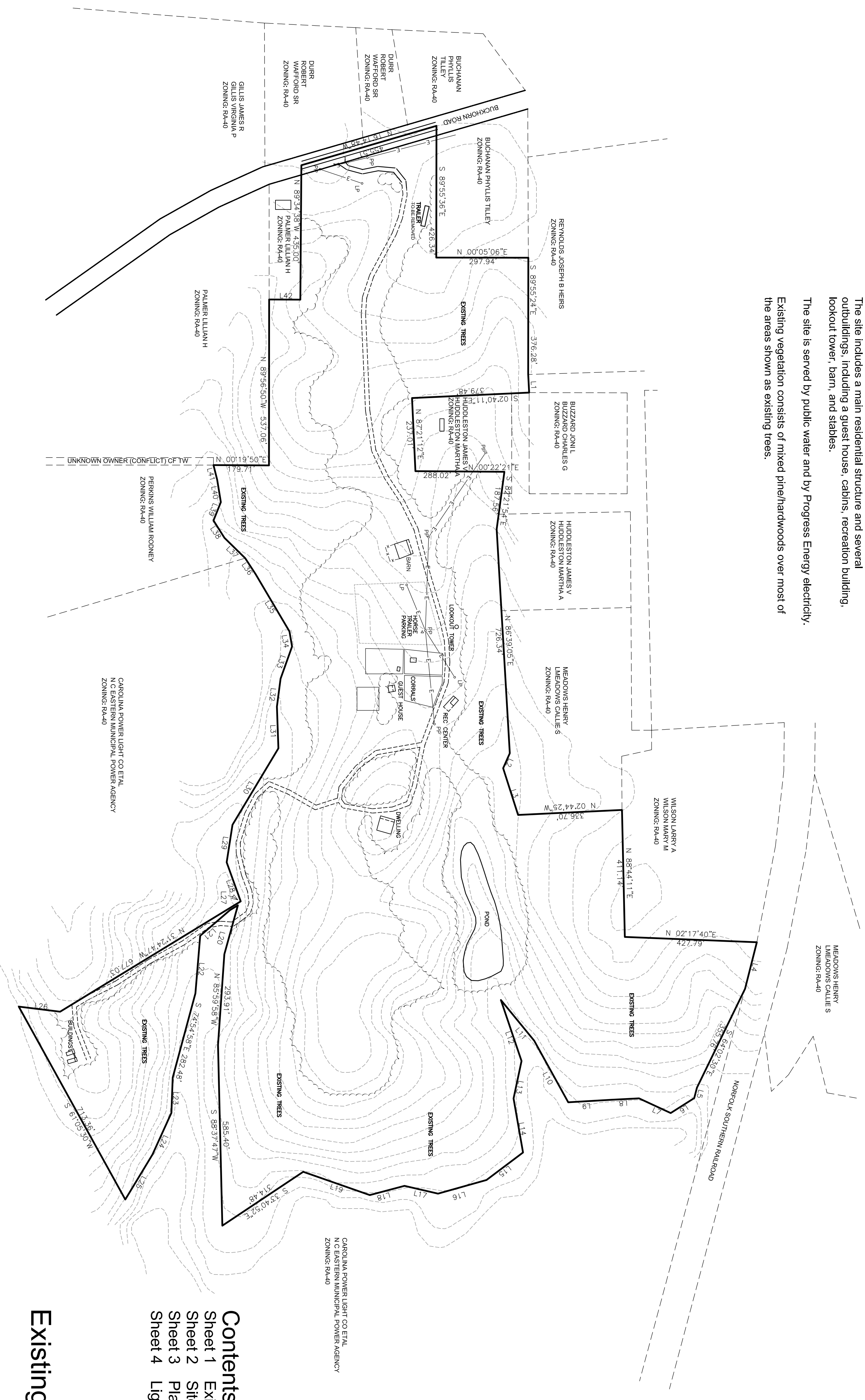
### Description of existing buildings and other existing conditions:

The site includes a main residential structure and several outbuildings, including a guest house, cabins, recreation building, lookout tower, barn, and stables.

The site is served by public water and by Progress Energy electricity.

Existing vegetation consists of mixed pine/hardwoods over most of the areas shown as existing trees.

COURSE	BEARINGS	DISTANCE
1	N 87°02'57"E	60.24'
2	S 86°03'02"E	152.81'
3	S 75°47'54"E	155.52'
4	S 75°22'28"E	34.91'
5	S 74°50'43"W	113.32'
6	S 72°55'39"E	94.43'
7	S 72°55'39"E	94.43'
8	S 02°53'39"E	223.90'
9	S 02°53'39"E	223.90'
10	S 02°53'39"E	223.90'
11	S 02°53'39"E	223.90'
12	N 71°17'03"E	208.32'
13	N 71°17'03"E	208.32'
14	N 86°02'59"E	177.49'
15	S 36°56'36"E	147.99'
16	S 36°56'36"E	147.99'
17	S 36°56'36"E	147.99'
18	S 36°56'36"E	147.99'
19	S 36°56'36"E	147.99'
20	S 36°56'36"E	147.99'
21	S 36°56'36"E	147.99'
22	S 89°16'10"E	187.01'
23	S 89°16'10"E	187.01'
24	S 89°16'10"E	187.01'
25	S 89°16'10"E	187.01'
26	S 89°16'10"E	187.01'
27	S 89°16'10"E	187.01'
28	S 89°16'10"E	187.01'
29	S 89°16'10"E	187.01'
30	S 89°16'10"E	187.01'
31	S 89°16'10"E	187.01'
32	S 89°16'10"E	187.01'
33	S 89°16'10"E	187.01'
34	S 89°16'10"E	187.01'
35	S 89°16'10"E	187.01'
36	S 89°16'10"E	187.01'
37	S 89°16'10"E	187.01'
38	S 89°16'10"E	187.01'
39	S 89°16'10"E	187.01'
40	S 89°16'10"E	187.01'
41	S 89°16'10"E	187.01'
42	S 89°16'10"E	187.01'



**Contents**

- Sheet 1 Existing Conditions
- Sheet 2 Site Plan
- Sheet 3 Planting Plan
- Sheet 4 Lighting Plan

### Existing Conditions

April 20, 2007

scale: 1"=200'

**Carter Crawford DESIGN**  
Land Planning Landscape Architecture Urban Design  
400 Heritage Village Lane Apex, NC 27502  
919 387 8218 voice 919 387 6548 fax  
The document is an instrument of service. All rights in this document, and to the electronic information contained herein, are reserved. No part of this document may be reproduced, stored in a retrieval system, or transmitted in any form or by any means, electronic, mechanical, photocopying, recording, or by any information storage and retrieval system, without the prior written permission of Carter Crawford Design, P.A. Use of this document for associated electronic files for any purpose not approved by Carter Crawford Design, P.A. is prohibited.