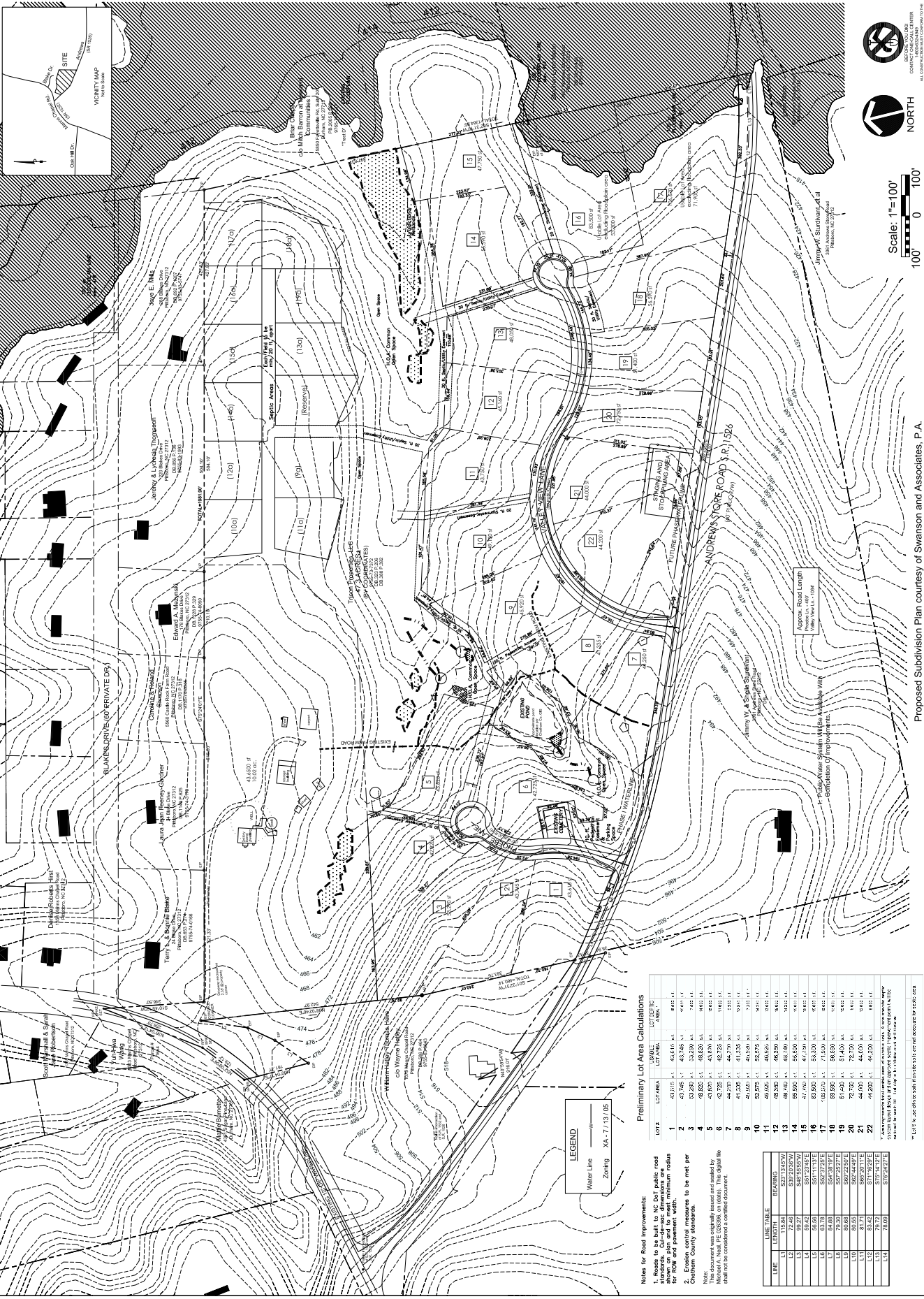


Owner: Tricon Properties (919) 484-1060  
 5836 Fayetteville Road, Suite 201  
 Durham, NC 27713

Proposed Subdivision Plan  
 Scale: 1"=100'

Plan Type: 12/19/06  
 Date: 12/19/06  
 Revisions:  
 Waterline 11/30/06  
 Waterline 12/19/06  
 S & E 1/27/07  
 Drawn By: DRL  
 Checked By: MAN  
 Project No.: 151  
 Sheet: C2



**Preliminary Lot Area Calculations**

LOT#	LOT AREA (SQ. FT.)	LOT AREA (ACRES)
1	41,015	0.93
2	43,765	1.00
3	53,881	1.23
4	48,802	1.12
5	43,091	0.98
6	44,235	1.01
7	41,235	0.94
8	41,161	0.94
9	41,161	0.94
10	41,161	0.94
11	41,161	0.94
12	41,161	0.94
13	41,161	0.94
14	41,161	0.94
15	41,161	0.94
16	41,161	0.94
17	41,161	0.94
18	41,161	0.94
19	41,161	0.94
20	41,161	0.94
21	41,161	0.94
22	41,161	0.94

**Notes for Road Improvements:**

1. Roads to be built to NC DOT public road standards and to meet minimum widths for their use pavement width. Custom County standards.

LINE TABLE	BEARING	DISTANCE
L1	N113.84°E	533.13
L2	S77.46°E	537.22
L3	S11.11°E	537.22
L4	S11.11°E	537.22
L5	S11.11°E	537.22
L6	S11.11°E	537.22
L7	S11.11°E	537.22
L8	S11.11°E	537.22
L9	S11.11°E	537.22
L10	S11.11°E	537.22
L11	S11.11°E	537.22
L12	S11.11°E	537.22
L13	S11.11°E	537.22
L14	S11.11°E	537.22

\* LOT# TO USE FOR EACH REFERENCE TO BE CHECKED FOR EACH SET

Proposed Subdivision Plan courtesy of Swanson and Associates, P.A.