

THE DATA SHOWN HERE IS CONSIDERED A GENERAL INDICATION ONLY. THE EXACT LOCATION OF THE PROJECT SITE IS SHOWN IN RED. THE EXACT LOCATION OF THE PROJECT SITE IS SHOWN IN RED. THE EXACT LOCATION OF THE PROJECT SITE IS SHOWN IN RED.

**DEPARTMENT OF TRANSPORTATION**  
**MINORITY BUSINESS ENTERPRISE**  
**CONSTRUCTION**  
**APPROVED**  
**DATE: \_\_\_\_\_**

**CONSTRUCTION CONTRACT FORM OF CONDITIONS**  
**DATE: \_\_\_\_\_**

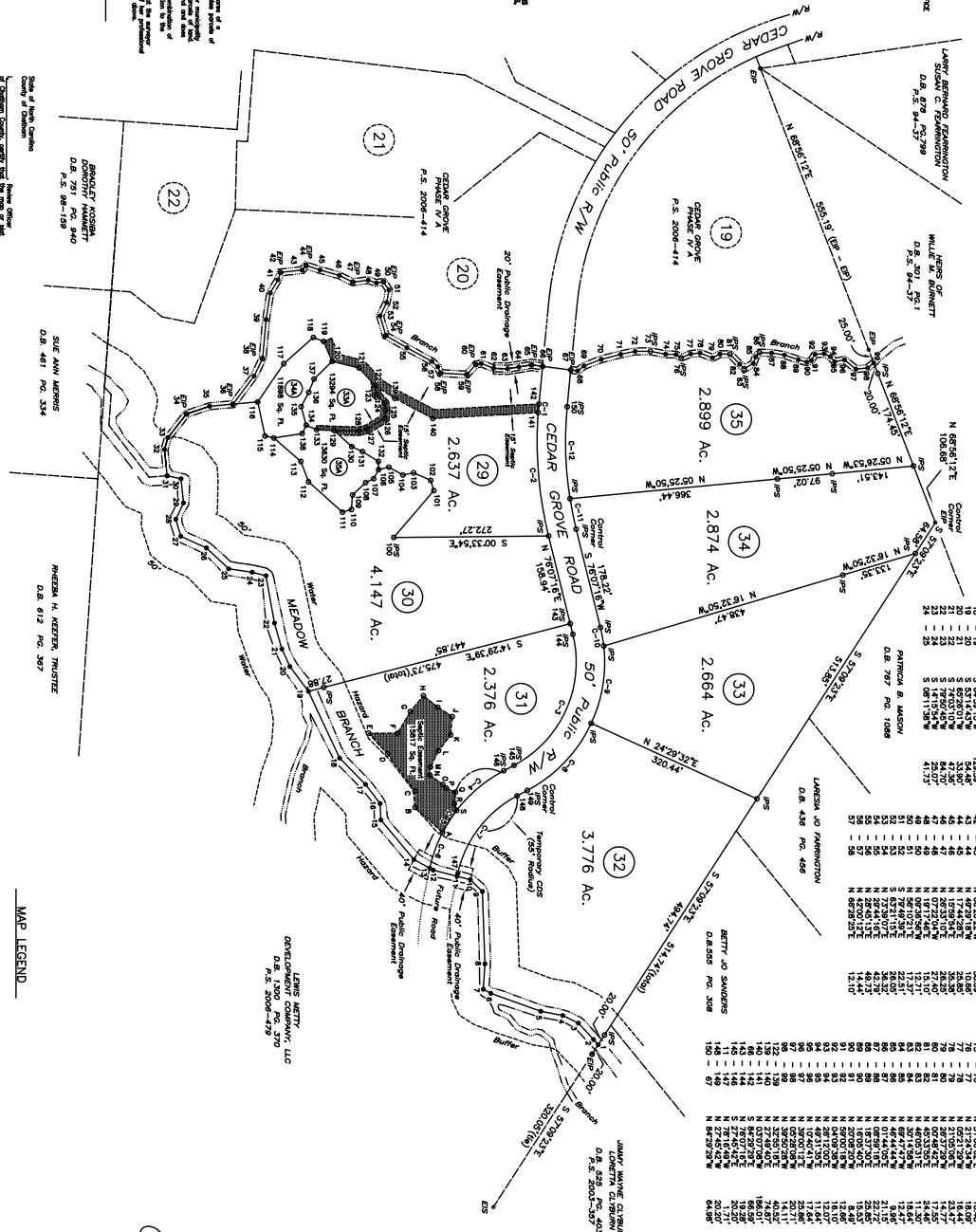
**CONSTRUCTION CONTRACT FORM OF CONDITIONS**  
**DATE: \_\_\_\_\_**

**CONSTRUCTION CONTRACT FORM OF CONDITIONS**  
**DATE: \_\_\_\_\_**

**CONSTRUCTION CONTRACT FORM OF CONDITIONS**  
**DATE: \_\_\_\_\_**

**CONSTRUCTION CONTRACT FORM OF CONDITIONS**  
**DATE: \_\_\_\_\_**

COURSE	BEARING	LENGTH	DELTA	DEGREE	CHORD	CHORD BEARING	COURSE	BEARING	DISTANCE	COURSE	BEARING	DISTANCE	COURSE	BEARING	DISTANCE
C-1	N 89°12'27" E	117.27'	18.84°	81°73'	120.78'	N 89°12'27" E	1	N 89°12'27" E	120.78'	1	N 89°12'27" E	120.78'	1	N 89°12'27" E	120.78'
C-2	S 89°12'27" W	117.27'	18.84°	81°73'	120.78'	S 89°12'27" W	2	S 89°12'27" W	120.78'	2	S 89°12'27" W	120.78'	2	S 89°12'27" W	120.78'
C-3	N 89°12'27" E	117.27'	18.84°	81°73'	120.78'	N 89°12'27" E	3	N 89°12'27" E	120.78'	3	N 89°12'27" E	120.78'	3	N 89°12'27" E	120.78'
C-4	S 89°12'27" W	117.27'	18.84°	81°73'	120.78'	S 89°12'27" W	4	S 89°12'27" W	120.78'	4	S 89°12'27" W	120.78'	4	S 89°12'27" W	120.78'
C-5	N 89°12'27" E	117.27'	18.84°	81°73'	120.78'	N 89°12'27" E	5	N 89°12'27" E	120.78'	5	N 89°12'27" E	120.78'	5	N 89°12'27" E	120.78'
C-6	S 89°12'27" W	117.27'	18.84°	81°73'	120.78'	S 89°12'27" W	6	S 89°12'27" W	120.78'	6	S 89°12'27" W	120.78'	6	S 89°12'27" W	120.78'
C-7	N 89°12'27" E	117.27'	18.84°	81°73'	120.78'	N 89°12'27" E	7	N 89°12'27" E	120.78'	7	N 89°12'27" E	120.78'	7	N 89°12'27" E	120.78'
C-8	S 89°12'27" W	117.27'	18.84°	81°73'	120.78'	S 89°12'27" W	8	S 89°12'27" W	120.78'	8	S 89°12'27" W	120.78'	8	S 89°12'27" W	120.78'
C-9	N 89°12'27" E	117.27'	18.84°	81°73'	120.78'	N 89°12'27" E	9	N 89°12'27" E	120.78'	9	N 89°12'27" E	120.78'	9	N 89°12'27" E	120.78'
C-10	S 89°12'27" W	117.27'	18.84°	81°73'	120.78'	S 89°12'27" W	10	S 89°12'27" W	120.78'	10	S 89°12'27" W	120.78'	10	S 89°12'27" W	120.78'
C-11	N 89°12'27" E	117.27'	18.84°	81°73'	120.78'	N 89°12'27" E	11	N 89°12'27" E	120.78'	11	N 89°12'27" E	120.78'	11	N 89°12'27" E	120.78'
C-12	S 89°12'27" W	117.27'	18.84°	81°73'	120.78'	S 89°12'27" W	12	S 89°12'27" W	120.78'	12	S 89°12'27" W	120.78'	12	S 89°12'27" W	120.78'



**CEEDAR GROVE**  
**PHASE IV**

SURVEY FOR  
 BALDWIN TOWNSHIP  
 CHATHAM COUNTY, N.C.  
 OWNER: MAC DEVELOPMENT COMPANY  
 CHELSEA HILL, N.C. 27517  
 DATE: MARCH 6, 2007

SCALE: 1" = 100'  
 100 50 0 100 200 300

AREA COMPUTED BY COORDINATE METHOD

**MAP LEGEND**

- EXISTING IRON PIPE
- IRON PIPE SET
- CONCRETE MONUMENT SET
- MONUMENT SET
- POWER POLE
- COMPUTED POINT

**NOTES**

- The Town Survey was done by this Surveyor during...
- The Surveyor does not certify to the existence or location of any underground features (sewers, utilities, etc.).
- This property is subject to all easements of record affecting...
- The Water Hazard Buffer shown shall extend 50 feet or more from the water body...
- There were no MOCS monuments found within 2000 feet of the project of land.
- Lot 33A, 33B, and 33C are not approved as separate lots for...
- Lot 33A, 33B, and 33C are not approved as separate lots for...
- A public water system is not presently available to the subdivision.
- Utility easements by the N.C. Department of Transportation, or other utility companies, are shown on this map.
- From pipes were set at all lot corners unless otherwise noted.
- Points 1 through 99 are computed points on the center of...
- Points 100 through 101 are computed points on the center of...
- The Station Error for lot 31 is to show as an off-station...
- Point 102 is to be established in show 1, including north, is 23.41 corners.
- REFERENCE: Plat Book 1088, Page 420
- Plat Book 1088, Page 420
- Plat Book 1088, Page 420
- Plat Book 1088, Page 420

**OWNER**  
 MAC DEVELOPMENT COMPANY  
 CHELSEA HILL, N.C. 27517

**DATE:** MARCH 6, 2007

**SCALE:** 1" = 100'

**AREA COMPUTED BY COORDINATE METHOD**

**MAP LEGEND**

- EXISTING IRON PIPE
- IRON PIPE SET
- CONCRETE MONUMENT SET
- MONUMENT SET
- POWER POLE
- COMPUTED POINT

**NOTES**

- The Town Survey was done by this Surveyor during...
- The Surveyor does not certify to the existence or location of any underground features (sewers, utilities, etc.).
- This property is subject to all easements of record affecting...
- The Water Hazard Buffer shown shall extend 50 feet or more from the water body...
- There were no MOCS monuments found within 2000 feet of the project of land.
- Lot 33A, 33B, and 33C are not approved as separate lots for...
- Lot 33A, 33B, and 33C are not approved as separate lots for...
- A public water system is not presently available to the subdivision.
- Utility easements by the N.C. Department of Transportation, or other utility companies, are shown on this map.
- From pipes were set at all lot corners unless otherwise noted.
- Points 1 through 99 are computed points on the center of...
- Points 100 through 101 are computed points on the center of...
- The Station Error for lot 31 is to show as an off-station...
- Point 102 is to be established in show 1, including north, is 23.41 corners.
- REFERENCE: Plat Book 1088, Page 420
- Plat Book 1088, Page 420
- Plat Book 1088, Page 420
- Plat Book 1088, Page 420