

**Mark Ashness**

---

**From:** Mark Ashness [mark@cegrouppinc.com]  
**Sent:** Wednesday, February 07, 2007 2:20 PM  
**To:** 'pyb@earthlink.net'  
**Subject:** Williams Tract, Bynum Ridge Road

Jane: This was the other parcel we spoke about this morning.

The parcel # is 0002048

The pin # is 9763 00 38 1356

We are not aware of any structures on the property. We will be submitting to the County at the end of the week for a Planning Board meeting on March 7<sup>th</sup>. Please review and furnish any comments to Lynn Richardson and myself prior to the meeting.

Both of these projects are 5 AC lot projects.

Thanks for your help.

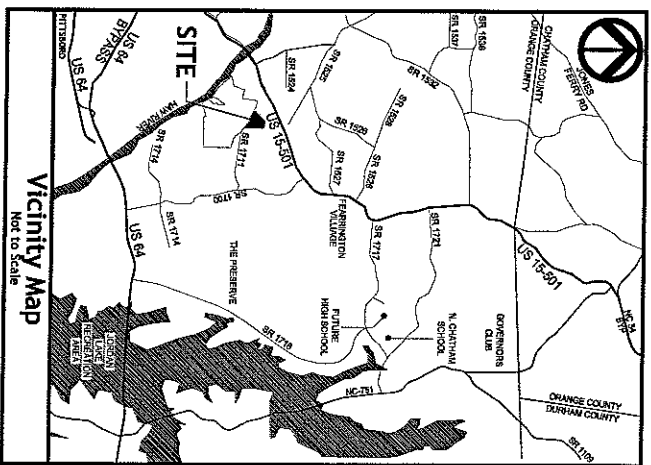
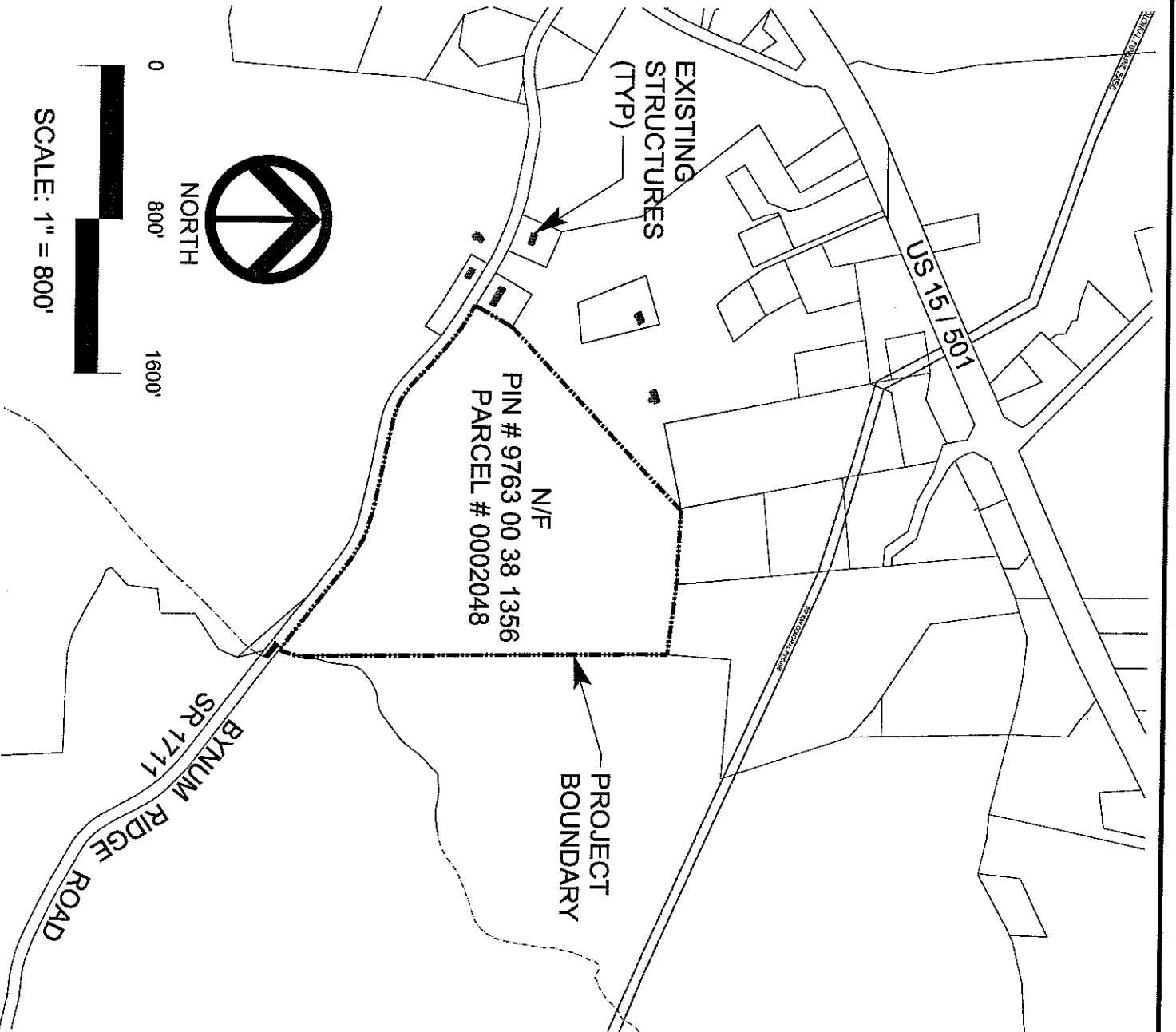
Mark Ashness, PE ASLA

**CE** Group, INC

11000 Regency Parkway  
Suite 410  
Cary, NC 27511  
(919) 367-8790 phone  
(919) 367-8791 fax  
(919) 606-7704 mobile

Williams Property  
Chatham County, North Carolina

**EXISTING STRUCTURES**  
February 7, 2007



**CE Group, Inc.**  
LAND PLANNING  
CIVIL ENGINEERING  
CONSTRUCTION MANAGEMENT  
11000 Regency Parkway, Suite 410, Cary, N.C. 27511  
Voice (919) 567-5750 Fax (919) 567-5751