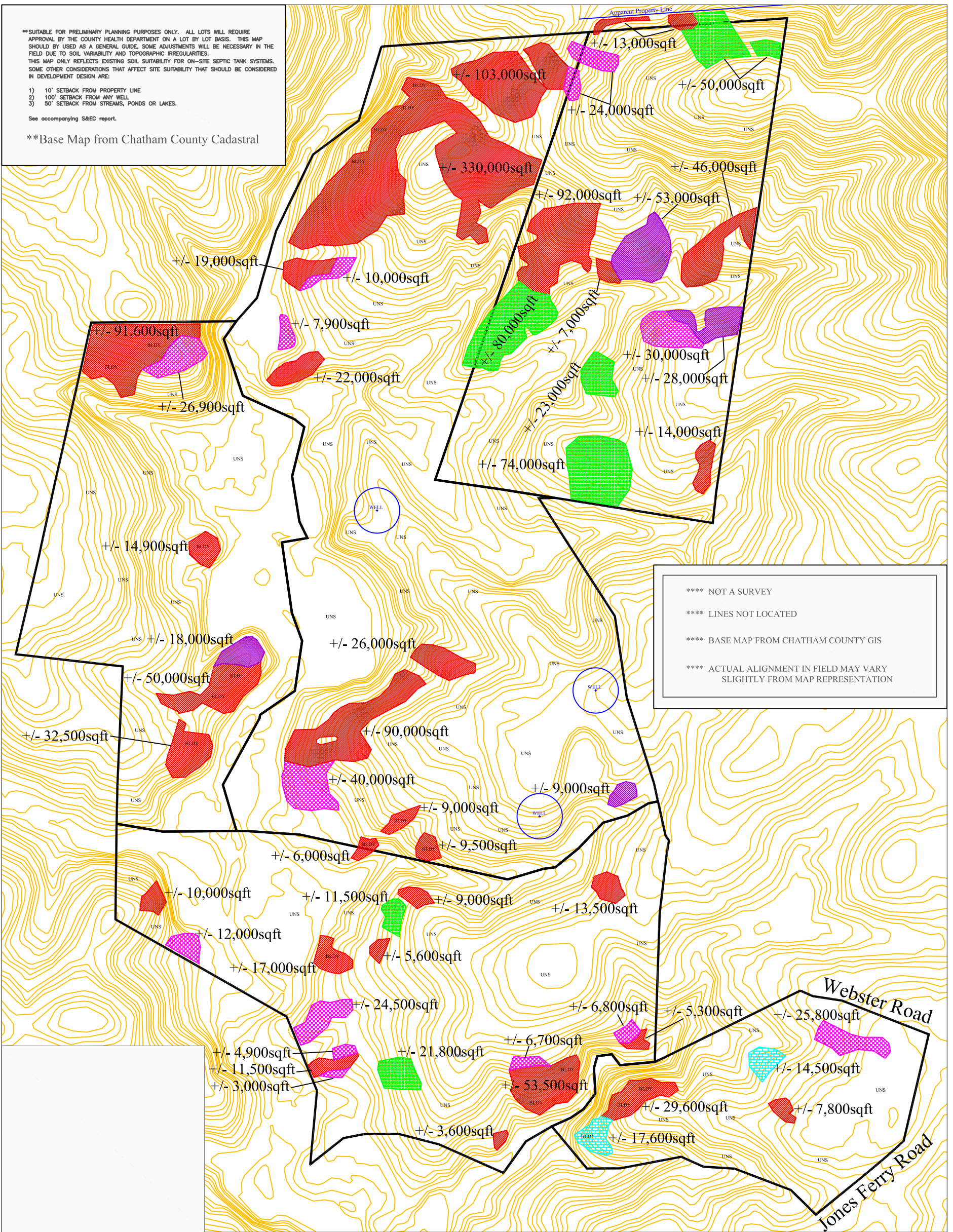


\*\*SUITABLE FOR PRELIMINARY PLANNING PURPOSES ONLY. ALL LOTS WILL REQUIRE APPROVAL BY THE COUNTY HEALTH DEPARTMENT ON A LOT BY LOT BASIS. THIS MAP SHOULD BE USED AS A GENERAL GUIDE. SOME ADJUSTMENTS WILL BE NECESSARY IN THE FIELD DUE TO SOIL VARIABILITY AND TOPOGRAPHIC IRREGULARITIES. THIS MAP ONLY REFLECTS EXISTING SOIL SUITABILITY FOR ON-SITE SEPTIC TANK SYSTEMS. SOME OTHER CONSIDERATIONS THAT AFFECT SITE SUITABILITY THAT SHOULD BE CONSIDERED IN DEVELOPMENT DESIGN ARE:

- 1) 10' SETBACK FROM PROPERTY LINE
- 2) 100' SETBACK FROM ANY WELL
- 3) 50' SETBACK FROM STREAMS, PONDS OR LAKES.

See accompanying S&EC report.

\*\*Base Map from Chatham County Cadastral



\*\*\*\* NOT A SURVEY  
\*\*\*\* LINES NOT LOCATED  
\*\*\*\* BASE MAP FROM CHATHAM COUNTY GIS  
\*\*\*\* ACTUAL ALIGNMENT IN FIELD MAY VARY SLIGHTLY FROM MAP REPRESENTATION

LEGEND

- Areas contain soils with 24 inches or more of useable material and have potential for conventional, modified conventional, or LPP type septic systems.
- Areas contain soils with 18 inches or more of useable material and have potential for subsurface drip irrigation type septic systems.
- Marginal Soils: Pretreatment Drip Irrigation Areas contain soils with marginal wetness indicators at or near 12 inches. These areas may have potential for pretreatment subsurface drip irrigation type septic systems.
- Marginal Saprolite: Need Backhoe Areas contain soils with marginal saprolite material. Backhoe evaluations are necessary to accurately determine the suitability of these areas.
- Extremely Bouldery: Need Backhoe Areas contain soils with an extremely bouldery surface which prohibited auger use. Backhoe needed to accurately determine the suitability of these areas.
- UNSUITABLE
- Bouldery Surface

See S&EC Report.

<p>SHEET TITLE <b>Detailed Soil / Site Evaluation</b> SHEET 1 of 1</p>	<p>PROJECT NAME: Jones Ferry Road Projects Chatham Landholdings, LLC Chatham County, NC December 2006</p>	<p><b>Soil and Environmental Consultants, PA</b> 3817-E Lawndale Drive, Greensboro, North Carolina 27455 Phone (336) 540-8234 Fax (336) 540-8235 Web Page www.SandEC.com</p>	<p>REVISIONS:</p>	<p>JOB NO. 4-1731 &amp; 4-1732 PROJECT MGR. ES DRAWN JT FIELDWORK ES, JT, JD SCALE 1" = 200' FILE g:\soil\soil\4-1732 FINAL Soils Combine 1/31/01/1732</p>
--	---	--	-------------------	--