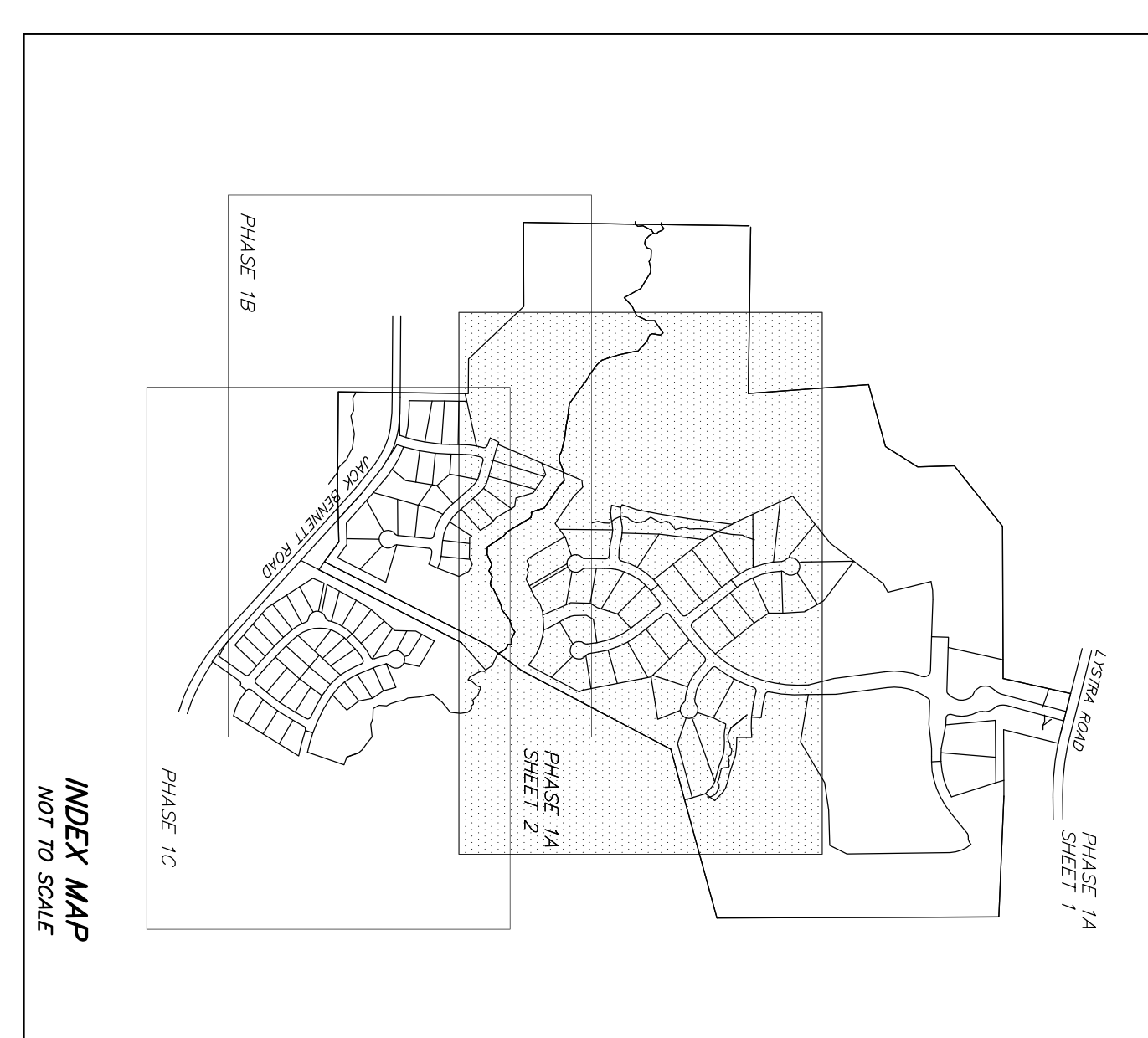


VICINITY MAP



INDEX MAP
NOT TO SCALE

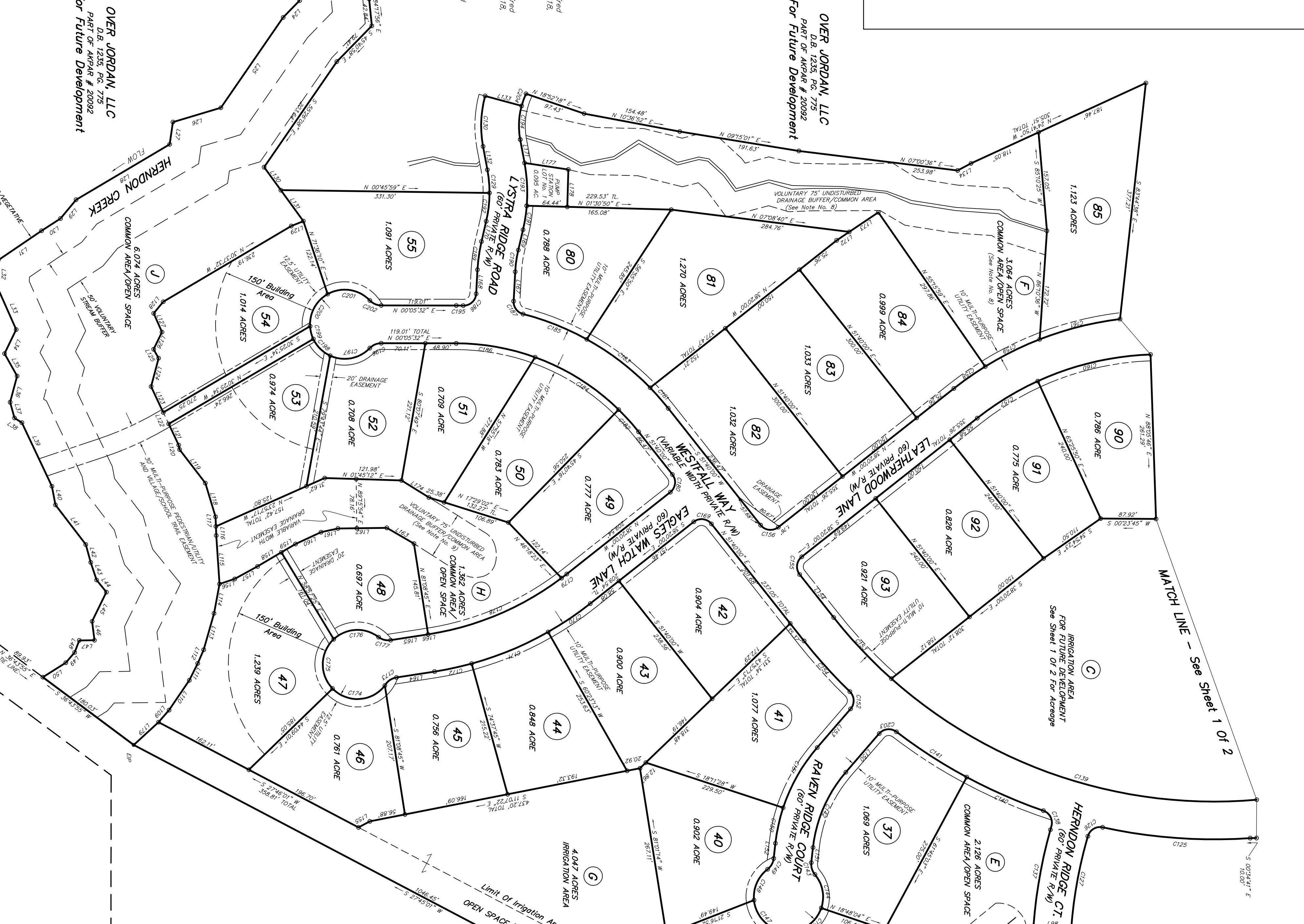
CURVE DATA TABLE

CURVE	LENGTH	RADIUS	BEARING	CHORD
C108	83.85	84.00	S 131°40' E	80.41
C109	73.14	80.00	N 151°52' W	72.41
C110	25.29	50.00	S 08°31' E	24.56
C111	160.16	80.00	S 101°27' E	154.27
C112	31.36	50.00	N 49°42' W	30.65
C113	165.83	200.00	N 04°59' W	161.12
C114	46.83	25.00	S 34°11' E	40.17
C115	123.46	100.00	N 03°14' E	115.77
C116	18.45	20.00	N 63°29' E	17.81
C117	20.00	20.00	N 89°59' E	18.57
C118	34.47	50.00	N 23°56' E	32.03
C119	232.70	420.00	N 69°17' E	230.33
C120	342.48	530.00	S 74°23' W	336.59
C121	20.32	25.00	N 69°17' E	19.76
C122	20.32	25.00	S 74°23' W	19.76
C123	52.89	55.00	N 70°03' W	50.61
C124	143.86	200.00	N 21°25' W	140.61
C125	30.24	20.00	S 62°28' E	29.44
C126	30.24	20.00	S 110°03' E	29.44
C127	143.89	200.00	S 80°03' E	143.06
C128	127.85	280.00	N 89°15' E	127.71
C129	37.02	200.00	S 84°48' W	36.91
C130	80.88	180.00	S 87°17' E	80.20
C131	20.47	120.00	S 69°12' E	20.44
C132	20.47	120.00	N 20°48' E	20.44
C133	19.12	20.00	N 32°54' W	18.40
C134	27.04	40.00	N 32°54' W	26.65
C135	271.83	350.00	S 145°04' W	265.05
C136	232.48	450.00	S 07°47' W	230.00
C137	155.23	280.00	S 87°03' E	154.99
C138	30.24	20.00	S 62°28' E	29.44
C139	133.15	830.00	N 23°59' E	132.81
C140	132.96	830.00	N 23°59' E	132.81
C141	132.35	220.00	N 32°59' E	131.01
C142	20.32	25.00	S 66°28' E	19.76
C143	56.67	55.00	S 79°16' W	54.20
C144	49.34	55.00	N 45°50' W	47.01
C145	62.39	55.00	N 60°35' W	58.91
C146	56.07	55.00	S 66°16' E	53.82
C147	20.32	25.00	S 60°16' E	19.76
C148	20.32	25.00	N 60°16' E	19.76
C149	57.96	280.00	S 77°44' E	57.86
C150	110.49	280.00	S 60°30' E	109.74
C151	30.24	20.00	S 62°28' E	29.44
C152	103.32	200.00	N 48°14' E	102.85
C153	31.42	20.00	S 83°20' E	28.28
C154	31.42	20.00	S 83°20' E	28.28
C155	31.42	20.00	S 83°20' E	28.28
C156	31.42	20.00	S 83°20' E	28.28
C157	112.81	420.00	S 31°27' E	112.64
C158	60.92	530.00	S 35°02' E	60.88
C159	96.70	530.00	S 28°17' E	96.56
C160	185.15	420.00	S 13°17' E	183.93
C161	80.67	530.00	N 33°58' W	80.59
C162	131.74	530.00	N 22°29' W	131.40
C163	60.28	530.00	N 12°06' W	60.25
C164	21.44	25.00	S 22°15' W	20.79
C165	32.52	55.00	S 28°58' W	32.04
C166	75.14	55.00	S 27°03' W	69.43
C167	67.85	55.00	N 78°32' W	63.46
C168	31.42	20.00	S 09°40' W	28.28
C169	31.42	20.00	S 09°40' W	28.28
C170	80.67	530.00	N 33°58' W	80.59
C171	131.74	530.00	N 22°29' W	131.40
C172	60.28	530.00	N 12°06' W	60.25
C173	21.44	25.00	S 22°15' W	20.79
C174	94.39	55.00	N 03°19' W	83.23
C175	44.54	55.00	S 85°43' W	43.51
C176	77.64	55.00	S 85°43' W	73.51
C177	20.32	25.00	N 14°25' W	19.76
C178	231.23	420.00	N 22°56' W	228.91
C179	10.59	420.00	N 37°17' W	10.59
C180	31.42	20.00	N 83°20' W	28.28
C181	43.81	430.00	S 48°45' W	43.59
C182	127.19	430.00	S 37°23' W	126.53
C183	152.80	370.00	S 32°08' W	156.61
C184	109.11	430.00	S 21°58' W	108.82
C185	127.87	370.00	S 09°59' W	127.23
C186	27.48	20.00	N 53°41' W	25.31
C187	30.88	20.00	N 42°39' W	27.91
C188	44.54	20.00	S 81°54' W	43.52
C189	38.60	280.00	N 81°09' W	38.57
C190	45.31	200.00	N 83°23' W	45.22
C191	68.43	280.00	S 87°03' W	68.23
C192	53.92	120.00	S 87°17' W	53.47
C193	68.43	280.00	S 87°03' W	68.23
C194	53.92	120.00	S 87°17' W	53.47
C195	11.12	430.00	S 00°50' W	11.12
C196	20.32	25.00	S 23°17' W	19.76
C197	38.34	55.00	N 44°48' E	37.25
C198	20.36	55.00	N 75°48' E	20.83
C199	61.31	55.00	S 61°20' E	61.78
C200	20.32	25.00	S 08°17' E	19.76
C201	20.32	25.00	S 08°17' E	19.76
C202	20.32	25.00	S 08°17' E	19.76
C203	20.32	25.00	S 08°17' E	19.76
C204	20.32	25.00	S 08°17' E	19.76
C205	20.32	25.00	S 08°17' E	19.76
C206	20.32	25.00	S 08°17' E	19.76
C207	20.32	25.00	S 08°17' E	19.76
C208	20.32	25.00	S 08°17' E	19.76
C209	20.32	25.00	S 08°17' E	19.76
C210	20.32	25.00	S 08°17' E	19.76

OVER JORDAN, LLC
D.B. 1235, PG. 775
PART OF AN PAR # 20092
For Future Development

- NOTES:**
- The property shown herein is subject to all easements of record affecting same.
 - No title search has been performed during the course of this survey.
 - This survey does not certify to the existence or nonexistence of any underground utilities that may or may not be present on this site.
 - All lots shown herein will be conveyed subject to restrictions, conditions, covenants and provisions for setbacks, use, maintenance, easements, assessments and other matters contained in a recorded declaration of covenants.
 - The private roads shown herein are to be initially constructed and maintained by the developer. Its successors and assigns, until such time as the same are turned over to a properly constituted property owners association.
 - All open areas and water hazard/detrimental stream buffers and wetland buffers are to be maintained by the developer. Its successors and assigns, until such time as the same are conveyed or turned over to a properly constituted property owners association.
 - There is a 10 foot multi-purpose utility easement along all lot fronts, unless otherwise noted.
 - The buffer depicted is a voluntary 75' undisturbed drainage buffer/common area as required by Condition No. 15 of the Conditional Use Permit (Resolution 2005-03), dated January 18, 2005, and incorporating the Conditional Use Permit (Resolution 2005-03), dated January 18, 2005, and incorporating the Conditional Use Permit (Resolution 2005-03), dated January 18, 2005, and incorporating the Conditional Use Permit (Resolution 2005-03), dated January 18, 2005, and incorporating the Conditional Use Permit (Resolution 2005-03), dated January 18, 2005.
 - The buffer depicted is a voluntary 75' undisturbed drainage buffer/common area as required by Condition No. 15 of the Conditional Use Permit (Resolution 2005-03), dated January 18, 2005, and incorporating the Conditional Use Permit (Resolution 2005-03), dated January 18, 2005, and incorporating the Conditional Use Permit (Resolution 2005-03), dated January 18, 2005, and incorporating the Conditional Use Permit (Resolution 2005-03), dated January 18, 2005.
 - The impacts depicted were authorized and accomplished pursuant to U.S. Army Corps of Engineers Section 404 Permit referred to by action ID: SWW-2004-1536-219 and dated October 15, 2006.

THIS SURVEY WAS BALANCED USING THE COMPASS RULE ADJUSTMENT.
ALL DISTANCES ARE HORIZONTAL GROUND MEASUREMENTS.
AREA DETERMINED USING D.M.D. METHOD.
REFERENCES: DEED BOOK 1235, PAGE 775
DEED BOOK 1235, PAGE 775
PLAN S.D. 2002-097
IRON PIPES SET AT ALL LOT CORNERS, UNLESS OTHERWISE NOTED.



OVER JORDAN, LLC
D.B. 1235, PG. 775
PART OF AN PAR # 20092
For Future Development

WESTFALL - PHASE 1A
WILLIAMS TOWNSHIP, CHATHAM COUNTY, NORTH CAROLINA

PRELIMINARY ONLY
Not For Sales Or Conveyance

DATE: SEPTEMBER 28, 2007
SCALE: 1" = 100'
DRAWN BY: JLAB
PROJECT NO.: P04-464

LEGEND:
EP - Existing Iron Pipe
EP - Existing Concrete Monument
CMS - Concrete Monument
NLS - 600 Nail Set
MNS - 600 Nail Set (Not Set)
HNS - 600 Nail Set (Not Set)
TL - Total
R/W - Right Of Way

GRAPHIC SCALE:
1 inch = 100 ft.

LINE TABLE:

LINE	BEARING	LENGTH
L95	S 89°32'07" E	41.64
L96	N 89°08'20" W	49.26
L97	N 88°08'20" W	60.00
L98	S 04°16'57" W	60.00
L99	S 87°25'59" E	59.94
L100	S 83°46'09" E	52.72
L101	S 82°00'38" E	60.26
L102	S 72°00'30" E	57.68
L103	S 71°12'27" E	41.92
L104	S 58°01'18" E	28.81
L105	S 46°28'45" E	46.90
L106	S 47°01'50" E	46.90
L107	S 31°01'59" E	25.40
L108	S 55°46'59" W	57.26
L109	N 55°46'59" W	57.26
L110	N 63°35'25" W	23.57
L111	N 66°26'25" W	60.03
L112	N 74°07'58" W	47.28
L113	N 79°36'14" W	62.08
L114	S 80°38'50" W	14.59
L115	S 80°38'50" W	14.59
L116	S 87°25'59" E	15.29
L117	S 87°25'59" E	15.29
L118	S 72°03'14" W	67.23
L119	S 79°17'57" W	7.12
L120	S 64°41'19" W	27.33
L121	S 64°41'19" W	27.33
L122	S 64°41'19" W	27.33
L123	N 75°10'50" W	46.65
L124	N 75°10'50" W	46.65
L125	S 67°48'22" W	16.19
L126	N 64°07'18" W	10.39
L127	S 60°02'28" W	32.55
L128	N 50°22'28" W	20.69
L129	N 21°59'59" W	60.84
L130	S 53°58'39" E	60.84
L131	S 53°58'39" E	60.84
L132	S 79°30'39" W	37.77
L133	N 15°15'52" E	60.00
L134	N 27°52'37" W	24.07
L135	N 62°42'09" E	61.31
L136	S 38°59'50" E	27.26
L137	S 44°55'06" E	19.42
L138	S 44°55'06" E	19.42
L139	S 41°42'10" E	18.78
L140	S 49°37'25" E	29.80
L141	S 61°57'25" E	39.67
L142	S 68°40'01" E	32.59
L143	S 72°03'07" E	32.59
L144	S 82°33'45" E	37.20
L145	S 82°33'45" E	37.20
L146	N 86°34'30" E	42.39
L147	S 84°36'57" E	36.36
L148	S 83°36'57" E	26.66
L149	S 83°36'57" E	26.66
L150	S 83°36'57" E	26.66
L151	S 83°36'57" E	26.66
L152	S 83°36'57" E	26.66
L153	S 83°36'57" E	26.66
L154	N 51°40'00" E	87.05
L155	S 28°33'53" W	20.34
L156	N 18°27'00" W	25.47
L157	N 30°33'18" W	41.00
L158	N 30°33'18" W	25.56
L159	N 30°33'18" W	25.56
L160	N 25°31'45" W	44.23
L161	N 12°21'36" W	27.49
L162	N 00°14'05" W	77.58
L163	N 30°14'15" E	61.24
L164	S 08°51'15" E	61.24
L165	S 08°51'15" E	61.24
L166	N 86°34'17" W	46.26
L167	N 86°34'17" W	46.26
L168	N 76°34'17" W	37.77
L169	N 76°34'17" W	33.03
L170	N 76°34'17" W	33.03
L171	S 79°30'39" W	51.23
L172	N 33°51'10" E	14.80
L173	S 27°15'00" E	14.80
L174	S 27°15'00" E	14.80
L175	S 27°15'00" E	14.80
L176	S 27°15'00" E	14.80
L177	N 08°36'55" E	13.37
L178	S 88°29'10" E	59.33
L179	N 42°28'54" W	53.46

CERTIFICATE OF APPROVAL FOR RECORDING:
I, County Clerk, do hereby certify that the subdivision map shown hereon has been filed for record in the office of the County Register of Deeds, and that it has been approved by the Board of County Commissioners, and that it is a true and correct copy of the original map as shown to me by the applicant.

BOARD OF EDUCATION
OF CHATHAM COUNTY
D.B. 886, PG. 624
PLAN S.D. 2001-285

CERTIFICATE OF OWNERSHIP AND DEDICATION:
The undersigned hereby certify that I am (we are) the owner (s) of the property shown and described herein, which is located in the subdivision jurisdiction of this county, and that I (we) have consented, and dedicate all right-of-way streets, alleys, walks, easements, paths, and other open spaces to public or private use as shown on this plat.

CHATHAM COUNTY COMMISSIONERS:
Chairman, Board of County Commissioners
State of North Carolina
County of Chatham

RECORDING INFORMATION:
Reviewed by: _____ Date: _____
By: _____ Title: _____

MACROCORP DEVELOPMENT COMPANY
ADMINISTRATIVE MEMBERS

PLU MINIMUM BUILDING SETBACKS:
FRONT YARD 40 FEET
SIDE YARD 10 FEET
REAR YARD 25 FEET