

REVISIONS:

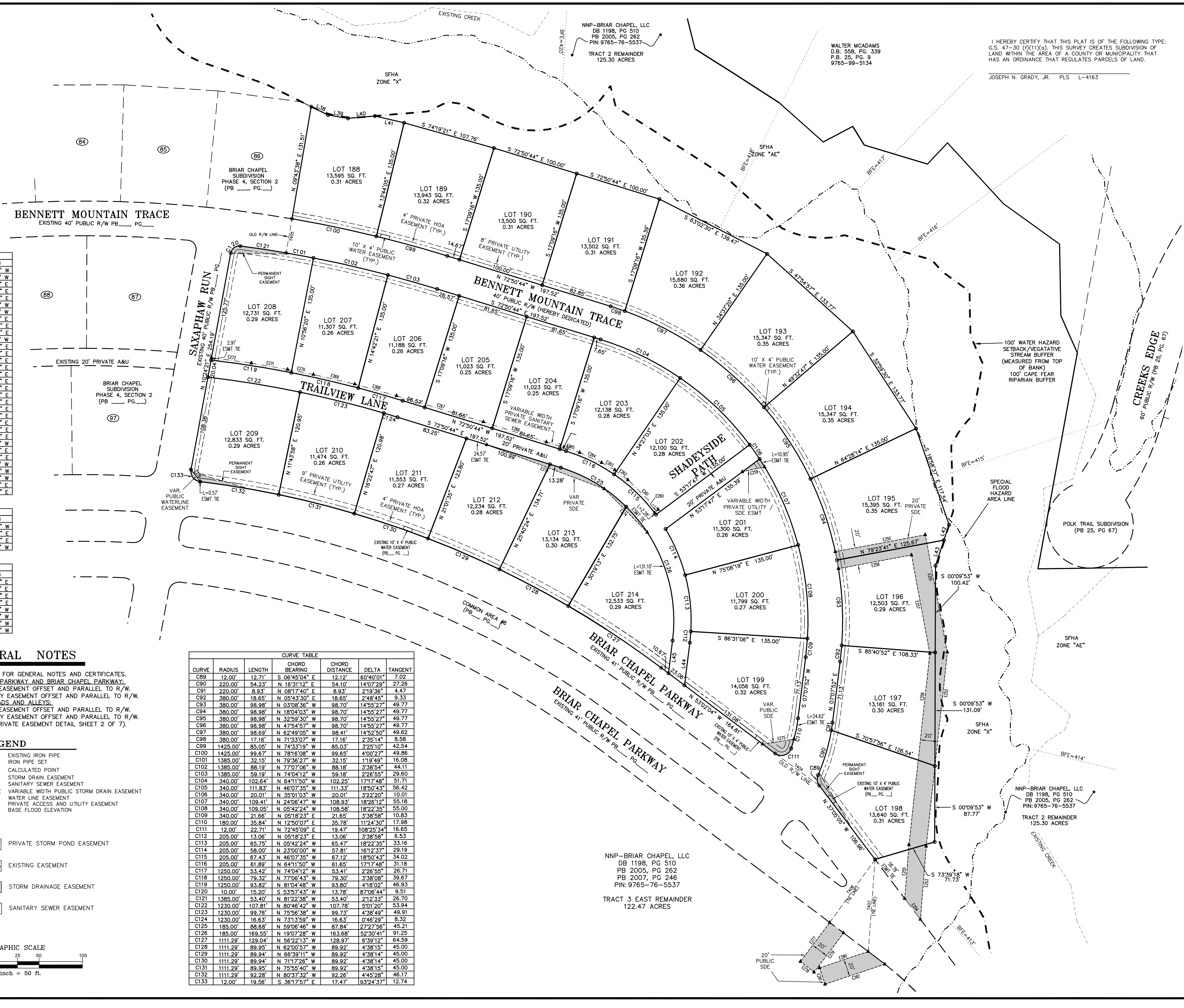
SURVEY FOR:
NEWLAND COMMUNITIES
 5860 FAYETTEVILLE ROAD
 SUITE 201
 DURHAM, NORTH CAROLINA 27713

BRIAR CHAPEL PHASE 4 SECTION 3
 SUBDIVISION, RECOMBINATION, EASEMENT DEDICATION & RIGHT-OF-WAY DEDICATION PLAT

I HEREBY CERTIFY THAT THIS PLAT IS OF THE FOLLOWING TYPE:
 G.S. 47-30 (f)(1)(g). THIS SURVEY CREATES SUBDIVISION OF LAND WITHIN THE AREA OF A COUNTY OR MUNICIPALITY THAT HAS AN ORDINANCE THAT REGULATES PARCELS OF LAND.
 JOSEPH N. GRADY, JR. PLS L-4163

WALTER MCADAMS
 D.B. 558, PG. 339
 P.B. 25, PG. 9
 9765-99-5134

NNP-BRIAR CHAPEL, LLC
 DB 1198, PG 510
 PB 2005, PG 262
 PIN: 9765-76-5537
 TRACT 2 REMAINDER
 125.30 ACRES



EASEMENT LINE TABLE

LINE	LENGTH	BEARING
E250	105.77'	S 79°23'44" W
E251	136.77'	N 10°36'19" W
E252	225.58'	N 06°12'41" E
E253	84.82'	N 04°31'46" E
E254	30.12'	S 37°05'05" E
E255	62.60'	S 04°31'46" W
E256	222.22'	S 06°12'41" W
E257	115.63'	S 10°33'19" E
E258	85.77'	S 79°23'44" E
E259	26.40'	N 77°43'08" E
E260	5.76'	S 44°16'15" W
E261	49.00'	S 45°43'45" E
E262	18.90'	S 52°40'48" E
E263	17.42'	S 60°51'37" E
E264	27.98'	S 65°21'09" E
E265	40.78'	S 72°26'17" E
E266	76.38'	S 72°17'45" E
E267	104.72'	S 73°15'48" E
E268	50.20'	S 74°25'44" E
E269	48.97'	S 76°53'09" E
E270	30.48'	S 78°59'37" E
E271	42.48'	S 79°57'48" E
E272	48.50'	S 82°13'38" E
E273	145.11'	S 89°25'02" E
E274	70.56'	S 44°39'39" E
E275	36.67'	S 81°05'58" W
E276	17.74'	S 38°02'11" E
E277	56.22'	N 36°57'56" E
E278	20.01'	N 51°28'18" W
E279	56.77'	S 36°57'56" W
E280	59.41'	S 71°27'28" W
E281	20.00'	S 18°58'01" E
E282	72.85'	N 71°27'28" E

TIE LINE TABLE

LINE	LENGTH	BEARING
T404	63.02'	N 53°59'52" W
T405	40.00'	N 09°43'38" E
T406	89.78'	N 35°39'32" E
T407	106.69'	S 04°14'42" W

LINE TABLE

LINE	LENGTH	BEARING
L38	21.75'	S 63°31'38" E
L39	23.43'	S 80°25'11" E
L40	31.24'	N 85°02'10" E
L41	34.61'	S 76°54'03" E
L42	18.70'	S 18°23'24" W
L43	31.01'	S 18°25'24" W
L44	49.56'	S 07°07'52" W
L45	38.09'	S 07°07'52" W

CURVE TABLE

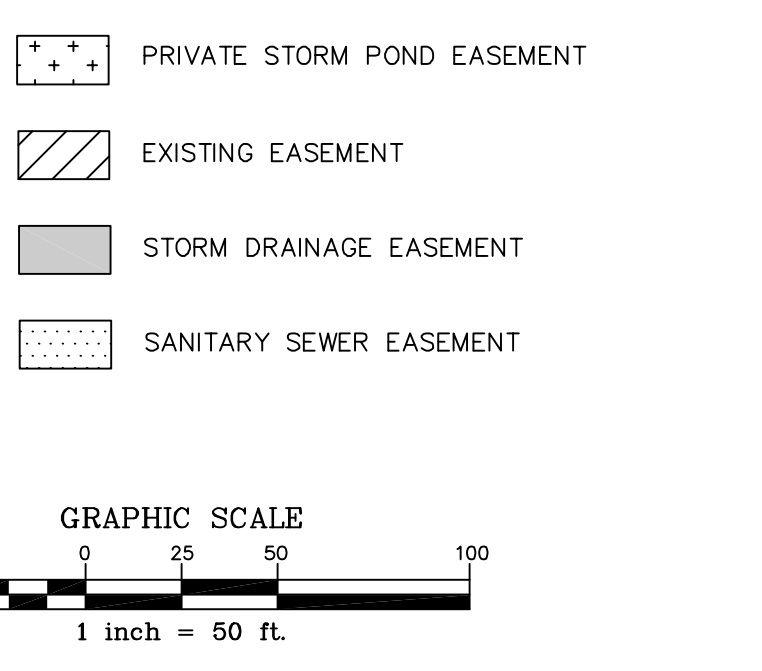
CURVE	RADIUS	LENGTH	CHORD BEARING	CHORD DISTANCE	DELTA	TANGENT
C89	12.00'	12.71'	S 06°45'04" E	12.12'	60°40'01"	7.02
C90	220.00'	54.23'	N 16°31'12" E	54.10'	14°07'29"	27.26
C91	220.00'	8.93'	N 08°17'40" E	8.93'	2°19'36"	4.47
C92	380.00'	18.65'	N 05°43'30" E	18.65'	2°48'45"	9.33
C93	380.00'	98.98'	N 03°08'36" W	98.70'	14°55'27"	49.77
C94	380.00'	98.98'	N 18°04'03" W	98.70'	14°55'27"	49.77
C95	380.00'	98.98'	N 32°59'30" W	98.70'	14°55'27"	49.77
C96	380.00'	98.98'	N 47°54'57" W	98.70'	14°55'27"	49.77
C97	380.00'	98.98'	N 62°49'05" W	98.41'	14°52'50"	49.62
C98	380.00'	17.16'	N 71°33'07" W	17.16'	2°35'14"	8.58
C99	1425.00'	85.05'	N 74°33'19" W	85.03'	3°25'10"	42.54
C100	1425.00'	99.67'	N 78°16'08" W	99.65'	4°00'27"	49.86
C101	1385.00'	32.15'	N 79°36'27" W	32.15'	1°19'49"	16.08
C102	1385.00'	88.19'	N 77°07'06" W	88.18'	3°38'54"	44.11
C103	1385.00'	59.19'	N 74°04'12" W	59.18'	2°26'55"	29.60
C104	340.00'	102.64'	N 64°11'50" W	102.25'	17°17'48"	51.71
C105	340.00'	111.83'	N 46°07'35" W	111.33'	18°50'43"	56.42
C106	340.00'	20.01'	N 35°01'03" W	20.01'	3°22'20"	10.01
C107	340.00'	109.41'	N 24°06'47" W	108.93'	18°26'12"	55.18
C108	340.00'	109.05'	N 05°42'24" W	108.58'	18°22'35"	55.00
C109	340.00'	21.66'	N 05°18'23" E	21.65'	3°38'58"	10.83
C110	180.00'	35.84'	N 12°50'07" E	35.78'	11°24'30"	17.98
C111	12.00'	22.71'	N 74°04'12" W	16.63'	0°48'29"	8.32
C112	1250.00'	79.32'	N 77°06'43" W	79.30'	3°38'08"	39.67
C113	205.00'	13.06'	N 05°18'23" E	13.06'	3°38'58"	6.53
C114	205.00'	65.75'	N 05°42'24" W	65.47'	18°22'35"	33.16
C115	205.00'	58.00'	N 23°00'00" W	57.81'	16°12'37"	29.19
C116	205.00'	67.43'	N 46°07'35" W	67.12'	18°50'43"	34.02
C117	205.00'	61.89'	N 64°11'50" W	61.65'	17°17'48"	31.18
C118	1250.00'	53.42'	N 74°04'12" W	53.41'	2°26'55"	26.71
C119	1250.00'	79.32'	N 77°06'43" W	79.30'	3°38'08"	39.67
C120	10.00'	15.20'	S 53°57'43" W	13.78'	87°06'44"	9.51
C121	1385.00'	53.40'	N 81°22'38" W	53.40'	2°12'33"	26.70
C122	1230.00'	107.81'	N 80°46'42" W	107.78'	5°01'20"	53.94
C123	1230.00'	99.76'	N 75°56'38" W	99.73'	4°38'49"	49.91
C124	1230.00'	16.63'	N 73°13'59" W	16.63'	0°48'29"	8.32
C125	185.00'	88.68'	N 59°06'46" W	87.84'	2°27'56"	45.21
C126	185.00'	189.55'	N 19°07'28" W	183.68'	2°27'56"	91.25
C127	1111.29'	129.04'	N 56°22'13" W	128.97'	6°39'12"	64.59
C128	1111.29'	89.95'	N 62°00'57" W	89.92'	4°38'15"	45.00
C129	1111.29'	89.94'	N 66°39'11" W	89.92'	4°38'14"	45.00
C130	1111.29'	89.94'	N 71°17'28" W	89.92'	4°38'14"	45.00
C131	1111.29'	89.95'	N 75°55'40" W	89.92'	4°38'15"	45.00
C132	1111.29'	92.28'	N 80°37'32" W	92.28'	4°45'28"	46.17
C133	12.00'	19.56'	S 36°17'57" E	17.47'	93°24'37"	12.74

GENERAL NOTES

- SEE SHEET 1 OF 7 FOR GENERAL NOTES AND CERTIFICATES.
- FOR GREAT RIDGE PARKWAY AND BRIAR CHAPEL PARKWAY:
 4' PRIVATE HOA EASEMENT OFFSET AND PARALLEL TO R/W.
 4' PRIVATE UTILITY EASEMENT OFFSET AND PARALLEL TO R/W.
 FOR ALL OTHER ROADS AND ALLEYS:
 4' PRIVATE HOA EASEMENT OFFSET AND PARALLEL TO R/W.
 8' PRIVATE UTILITY EASEMENT OFFSET AND PARALLEL TO R/W.
 (SEE PRIVATE EASEMENT DETAIL SHEET 2 OF 7).

LEGEND

- EXISTING IRON PIPE
- IRON PIPE SET
- CALCULATED POINT
- STORM DRAIN EASEMENT
- SS ESMT
- SANITARY SEWER EASEMENT
- VARIABLE WIDTH PUBLIC STORM DRAIN EASEMENT
- WATER LINE EASEMENT
- PRIVATE A&U
- PRIVATE ACCESS AND UTILITY EASEMENT
- BASE FLOOD ELEVATION



NNP-BRIAR CHAPEL, LLC
 DB 1198, PG 510
 PB 2005, PG 262
 PIN: 9765-76-5537
 TRACT 3 EAST REMAINDER
 122.47 ACRES