

LINE	LENGTH	BEARING
L1	18.88'	N 03°38'40" W
L2	26.57'	N 04°35'31" W
L3	26.57'	N 04°35'31" W
L4	26.57'	N 04°35'31" W
L5	37.50'	N 03°38'40" W
L6	19.32'	N 02°38'40" W
L7	23.57'	N 89°49'54" W
L8	23.57'	N 89°49'54" W
L9	23.57'	N 89°49'54" W
L10	43.72'	N 86°07'51" W
L11	14.71'	N 86°21'20" E
L12	22.83'	N 86°21'20" E
L13	19.16'	N 46°26'52" E
L14	26.00'	N 46°26'52" E
L15	26.00'	N 46°26'52" E
L16	37.98'	N 03°38'40" E
L17	18.42'	N 19°20'12" E
L18	11.68'	N 61°39'40" W
L19	16.00'	N 61°39'40" W
L20	16.00'	N 61°39'40" W
L21	16.00'	N 61°39'40" W
L22	10.47'	N 84°02'27" W
L23	10.47'	N 84°02'27" W
L24	29.00'	N 84°02'27" W
L25	29.00'	N 84°02'27" W
L26	34.95'	N 84°02'27" W
L27	28.00'	N 84°02'27" W
L28	28.00'	N 84°02'27" W
L29	28.00'	N 84°02'27" W
L30	18.30'	N 84°02'27" E
L31	12.09'	N 46°26'52" E
L32	16.61'	N 46°26'52" E
L33	16.61'	N 46°26'52" E
L34	15.21'	N 46°26'52" E
L35	37.54'	N 03°38'40" E

LINE	LENGTH	BEARING
E201	107.70'	N 61°12'48" E
E202	29.77'	N 112°05'05" E
E203	29.77'	N 112°05'05" E
E204	3.97'	S 39°16'42" W
E205	13.04'	S 08°48'32" W
E206	26.64'	S 45°26'20" E
E207	13.77'	S 08°13'55" W
E208	13.77'	S 08°13'55" W
E209	86.68'	S 46°45'52" W
E210	54.69'	N 86°29'58" E
E211	53.29'	S 04°13'42" E
E212	3.08'	N 85°46'19" E
E213	6.78'	S 10°16'04" W
E214	6.78'	S 10°16'04" W
E215	6.40'	S 43°20'01" W
E216	27.59'	N 36°05'56" W
E217	30.57'	S 78°28'26" E
E218	85.47'	N 49°49'36" E
E219	16.99'	S 10°16'04" W
E220	16.99'	S 10°16'04" W
E221	89.76'	S 50°18'56" W
E222	93.24'	S 12°01'07" E
E223	53.27'	S 57°14'29" E

LINE	LENGTH	BEARING
L401	40.00'	N 03°30'34" W
L402	50.28'	N 84°02'27" W
L421	20.00'	S 03°38'40" E

CURVE	RADIUS	LENGTH	CHORD BEARING	CHORD DISTANCE	CHORD DELTA	TANGENT
C1	211.90'	107.83'	N 14°17'04" W	106.67'	78°12'42"	35.12'
C2	211.90'	107.83'	N 14°17'04" W	106.67'	78°12'42"	35.12'
C3	370.46'	201.11'	N 06°00'46" E	201.10'	306°55'10"	10.06'
C4	370.46'	66.97'	N 14°17'34" E	66.77'	132°02'02"	43.68'
C5	549.00'	11.52'	S 18°24'40" W	11.52'	112°02'07"	5.76'
C6	549.00'	30.88'	S 18°11'55" W	30.88'	313°22'	15.44'
C7	549.00'	30.88'	S 17°38'34" W	30.88'	313°22'	15.44'
C8	549.00'	30.88'	S 06°15'10" W	30.88'	313°22'	15.44'
C9	549.00'	30.88'	S 03°36'38" W	30.88'	313°22'	15.44'
C10	549.00'	25.09'	S 03°36'38" W	25.09'	237°06'	12.55'
C11	549.00'	25.09'	S 00°59'31" W	25.09'	237°06'	12.55'
C12	549.00'	25.09'	S 01°37'35" E	25.09'	237°06'	12.55'
C13	549.00'	6.79'	S 03°17'24" E	6.79'	042°31"	3.40'
C14	549.00'	6.79'	N 41°14'58" E	6.79'	094°56'	3.40'
C15	549.00'	6.79'	N 41°14'58" E	6.79'	094°56'	3.40'
C16	420.00'	20.25'	S 77°10'00" W	20.25'	245°46'	10.13'
C17	420.00'	361.00'	S 49°58'52" W	368.07'	51°38'30"	204.73'
C18	420.00'	121.24'	S 15°43'26" W	120.82'	163°21"	61.04'
C19	10.00'	15.45'	N 51°52'24" E	13.96'	88°30'17"	9.74'
C20	280.00'	34.69'	S 74°12'10" E	34.24'	192°23'52"	17.80'
C21	280.00'	69.69'	S 74°12'10" E	69.68'	216°54'	34.80'
C22	1750.00'	69.69'	S 74°12'10" E	69.68'	216°54'	34.80'
C23	659.00'	8.13'	S 03°17'24" E	8.13'	042°31"	4.08'
C24	659.00'	30.12'	S 01°37'35" E	30.11'	237°06'	15.06'
C25	659.00'	30.12'	S 00°59'31" W	30.11'	237°06'	15.06'
C26	659.00'	30.12'	S 03°36'38" W	30.11'	237°06'	15.06'
C27	659.00'	37.07'	S 06°15'10" W	37.06'	313°22'	18.54'
C28	659.00'	37.07'	S 03°36'38" W	37.06'	313°22'	18.54'
C29	659.00'	37.07'	S 02°38'34" W	37.06'	313°22'	18.54'
C30	659.00'	37.07'	S 16°11'55" W	37.06'	313°22'	18.54'
C31	659.00'	13.82'	S 18°24'40" W	13.82'	112°02'07"	6.91'
C32	25.00'	12.59'	S 33°26'05" W	12.45'	285°50'45"	6.43'
C33	25.00'	12.59'	S 33°26'05" W	12.45'	285°50'45"	6.43'
C34	45.00'	14.81'	S 33°26'05" W	14.81'	110°13'52"	7.41'
C35	45.00'	208.94'	S 07°41'02" W	206.25'	221°39'23"	136.02'
C36	45.00'	31.32'	S 38°57'02" W	30.69'	39°32'38"	16.32'
C37	45.00'	24.57'	S 74°31'43" W	24.26'	31°16'45"	12.60'
C38	12.00'	18.90'	N 48°45'24" W	17.00'	90°13'29"	12.05'
C39	380.00'	54.44'	S 82°30'37" W	54.39'	81°28'28"	27.28'
C40	380.00'	20.31'	S 79°25'23" W	20.31'	103°58'	1.59'
C41	380.00'	20.31'	S 79°25'23" W	20.31'	103°58'	1.59'
C42	65.00'	26.18'	S 22°01'10" W	26.00'	230°24'26"	13.27'
C43	65.00'	15.92'	S 53°27'55" W	15.88'	140°20'55"	8.00'
C44	45.00'	5.35'	N 49°51'08" E	5.34'	6°48'32"	2.68'
C45	45.00'	33.54'	N 74°36'29" E	32.77'	42°42'08"	17.59'
C46	380.00'	86.25'	S 32°17'08" W	85.07'	17°51'13"	47.60'
C47	380.00'	86.25'	S 32°17'08" W	85.07'	17°51'13"	47.60'
C48	380.00'	34.07'	S 46°45'44" W	34.06'	5°08'13"	17.05'
C49	380.00'	34.07'	S 46°45'44" W	34.06'	5°08'13"	17.05'
C50	380.00'	34.07'	S 92°03'17" W	34.06'	5°08'13"	17.05'
C51	380.00'	34.07'	S 92°03'17" W	34.06'	5°08'13"	17.05'
C52	380.00'	66.09'	S 69°24'24" W	66.00'	9°57'51"	33.13'
C53	128.00'	15.11'	S 72°15'51" W	15.07'	13°20'43"	7.69'
C54	320.00'	18.08'	S 47°15'14" W	18.08'	31°41'13"	9.04'
C55	320.00'	18.01'	S 64°12'07" W	18.01'	2°32'02"	8.01'
C56	320.00'	4.32'	S 62°22'53" W	4.32'	0°46'26"	2.16'
C57	320.00'	60.68'	N 21°39'06" E	60.39'	19°18'51"	30.63'
C58	180.00'	28.44'	N 85°30'28" E	28.44'	9°03'45"	14.22'
C59	180.00'	28.44'	N 85°30'28" E	28.44'	9°03'45"	14.22'
C60	10.00'	15.91'	S 38°27'48" E	14.28'	81°09'17"	10.20'
C61	380.00'	106.51'	S 15°06'36" W	106.16'	16°03'33"	53.61'
C62	380.00'	9.74'	S 88°20'00" E	9.73'	8°35'05"	4.88'
C63	65.00'	23.86'	N 78°13'37" E	23.72'	21°01'42"	12.06'
C64	65.00'	18.09'	N 89°22'16" E	18.04'	15°36'59"	9.11'
C65	65.00'	5.02'	S 49°48'00" W	5.01'	6°23'18"	2.51'
C66	45.00'	18.14'	S 64°22'58" W	18.02'	23°05'39"	9.11'
C67	45.00'	8.19'	S 81°08'34" W	8.18'	10°25'32"	4.11'
C68	380.00'	21.13'	S 24°45'57" W	21.13'	311°10'	10.57'

LOT #	SO. FT.	ACRES
278*	2,257	0.05
279*	2,042	0.05
280*	1,887	0.05
281*	1,887	0.05
282*	1,887	0.05
283*	1,887	0.05
284	3,247	0.07
285	3,247	0.07
286	3,247	0.07
287	3,247	0.07
288	3,247	0.07
289	3,247	0.07
290*	3,247	0.07
291	3,247	0.07
292	3,247	0.07
293	3,247	0.07
294	3,247	0.07
295	3,247	0.07
296	3,247	0.07
297	3,247	0.07
298	3,247	0.07
299	3,247	0.07
300	3,247	0.07
301	3,247	0.07
302	3,247	0.07
303	3,247	0.07
304	3,247	0.07
305	3,247	0.07
306	3,247	0.07
307	3,247	0.07
308	3,247	0.07
309	3,247	0.07
310	3,247	0.07
COMMON AREA #19	5,168	0.14
COMMON AREA #20	3,180	0.07

*AFFORDABLE LOTS: 278-283 & 290

CAMERON PROPERTIES LTD & FIVE STAR GROUP LLC DB 833, PG 752 PB 2005, PG 262 PIN: 9766-88-1080 TRACT C REMAINDER

50' WATER HAZARD SEPARATIVE STREAM BUFFER (MEASURED FROM TOP OF BANK) 150' CARPENTER RIPARIAN BUFFER

50' WATER HAZARD SEPARATIVE STREAM BUFFER (MEASURED FROM TOP OF BANK) 150' CARPENTER RIPARIAN BUFFER

50' WATER HAZARD SEPARATIVE STREAM BUFFER (MEASURED FROM TOP OF BANK) 150' CARPENTER RIPARIAN BUFFER

50' WATER HAZARD SEPARATIVE STREAM BUFFER (MEASURED FROM TOP OF BANK) 150' CARPENTER RIPARIAN BUFFER

50' WATER HAZARD SEPARATIVE STREAM BUFFER (MEASURED FROM TOP OF BANK) 150' CARPENTER RIPARIAN BUFFER

50' WATER HAZARD SEPARATIVE STREAM BUFFER (MEASURED FROM TOP OF BANK) 150' CARPENTER RIPARIAN BUFFER

50' WATER HAZARD SEPARATIVE STREAM BUFFER (MEASURED FROM TOP OF BANK) 150' CARPENTER RIPARIAN BUFFER

50' WATER HAZARD SEPARATIVE STREAM BUFFER (MEASURED FROM TOP OF BANK) 150' CARPENTER RIPARIAN BUFFER

50' WATER HAZARD SEPARATIVE STREAM BUFFER (MEASURED FROM TOP OF BANK) 150' CARPENTER RIPARIAN BUFFER

50' WATER HAZARD SEPARATIVE STREAM BUFFER (MEASURED FROM TOP OF BANK) 150' CARPENTER RIPARIAN BUFFER

50' WATER HAZARD SEPARATIVE STREAM BUFFER (MEASURED FROM TOP OF BANK) 150' CARPENTER RIPARIAN BUFFER

50' WATER HAZARD SEPARATIVE STREAM BUFFER (MEASURED FROM TOP OF BANK) 150' CARPENTER RIPARIAN BUFFER

50' WATER HAZARD SEPARATIVE STREAM BUFFER (MEASURED FROM TOP OF BANK) 150' CARPENTER RIPARIAN BUFFER

50' WATER HAZARD SEPARATIVE STREAM BUFFER (MEASURED FROM TOP OF BANK) 150' CARPENTER RIPARIAN BUFFER

50' WATER HAZARD SEPARATIVE STREAM BUFFER (MEASURED FROM TOP OF BANK) 150' CARPENTER RIPARIAN BUFFER

50' WATER HAZARD SEPARATIVE STREAM BUFFER (MEASURED FROM TOP OF BANK) 150' CARPENTER RIPARIAN BUFFER

50' WATER HAZARD SEPARATIVE STREAM BUFFER (MEASURED FROM TOP OF BANK) 150' CARPENTER RIPARIAN BUFFER

50' WATER HAZARD SEPARATIVE STREAM BUFFER (MEASURED FROM TOP OF BANK) 150' CARPENTER RIPARIAN BUFFER

50' WATER HAZARD SEPARATIVE STREAM BUFFER (MEASURED FROM TOP OF BANK) 150' CARPENTER RIPARIAN BUFFER

50' WATER HAZARD SEPARATIVE STREAM BUFFER (MEASURED FROM TOP OF BANK) 150' CARPENTER RIPARIAN BUFFER

50' WATER HAZARD SEPARATIVE STREAM BUFFER (MEASURED FROM TOP OF BANK) 150' CARPENTER RIPARIAN BUFFER

50' WATER HAZARD SEPARATIVE STREAM BUFFER (MEASURED FROM TOP OF BANK) 150' CARPENTER RIPARIAN BUFFER

50' WATER HAZARD SEPARATIVE STREAM BUFFER (MEASURED FROM TOP OF BANK) 150' CARPENTER RIPARIAN BUFFER

50' WATER HAZARD SEPARATIVE STREAM BUFFER (MEASURED FROM TOP OF BANK) 150' CARPENTER RIPARIAN BUFFER

50' WATER HAZARD SEPARATIVE STREAM BUFFER (MEASURED FROM TOP OF BANK) 150' CARPENTER RIPARIAN BUFFER

50' WATER HAZARD SEPARATIVE STREAM BUFFER (MEASURED FROM TOP OF BANK) 150' CARPENTER RIPARIAN BUFFER

50' WATER HAZARD SEPARATIVE STREAM BUFFER (MEASURED FROM TOP OF BANK) 150' CARPENTER RIPARIAN BUFFER

50' WATER HAZARD SEPARATIVE STREAM BUFFER (MEASURED FROM TOP OF BANK) 150' CARPENTER RIPARIAN BUFFER

50' WATER HAZARD SEPARATIVE STREAM BUFFER (MEASURED FROM TOP OF BANK) 150' CARPENTER RIPARIAN BUFFER

50' WATER HAZARD SEPARATIVE STREAM BUFFER (MEASURED FROM TOP OF BANK) 150' CARPENTER RIPARIAN BUFFER

50' WATER HAZARD SEPARATIVE STREAM BUFFER (MEASURED FROM TOP OF BANK) 150' CARPENTER RIPARIAN BUFFER

50' WATER HAZARD SEPARATIVE STREAM BUFFER (MEASURED FROM TOP OF BANK) 150' CARPENTER RIPARIAN BUFFER

50' WATER HAZARD SEPARATIVE STREAM BUFFER (MEASURED FROM TOP OF BANK) 150' CARPENTER RIPARIAN BUFFER

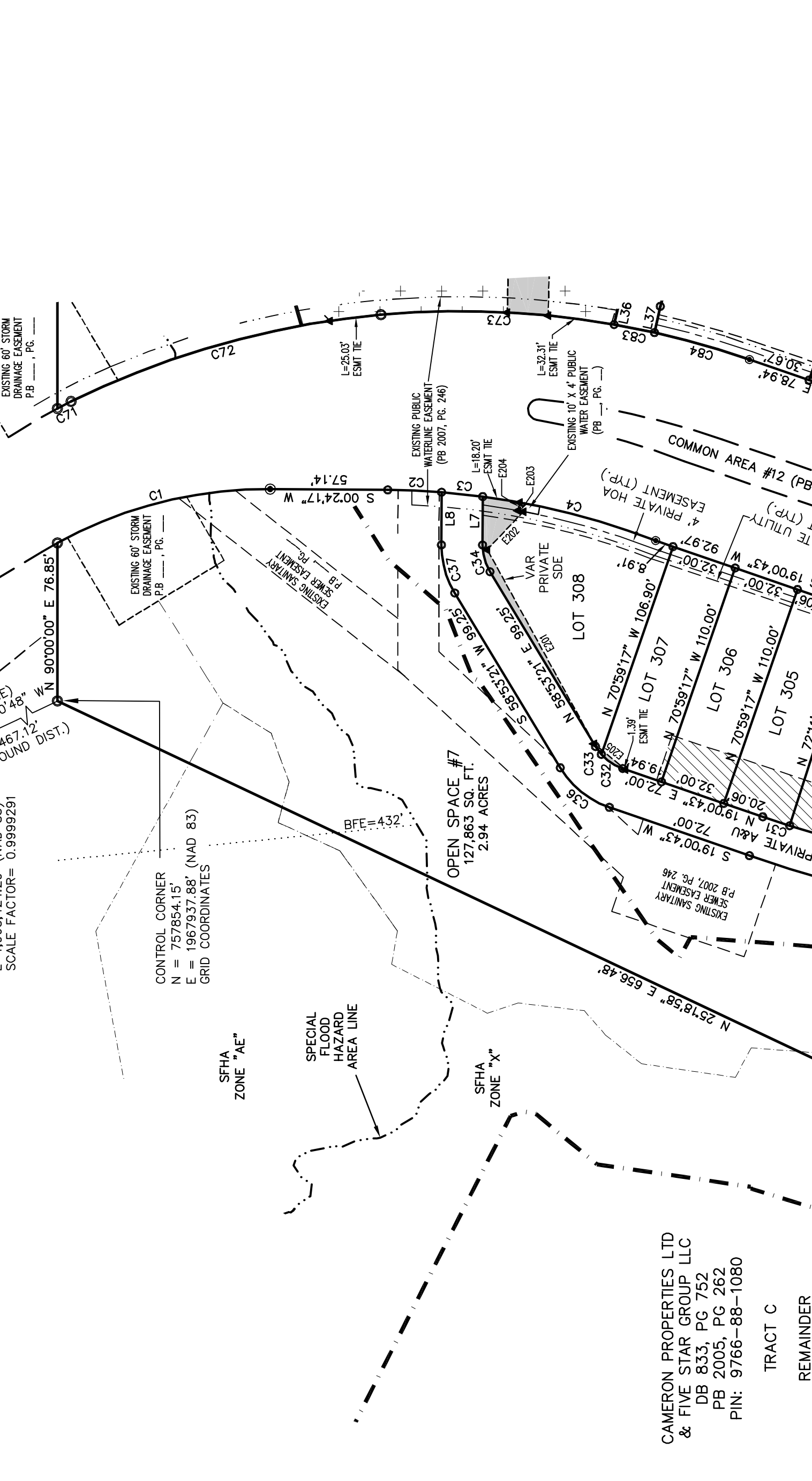
50' WATER HAZARD SEPARATIVE STREAM BUFFER (MEASURED FROM TOP OF BANK) 150' CARPENTER RIPARIAN BUFFER

50' WATER HAZARD SEPARATIVE STREAM BUFFER (MEASURED FROM TOP OF BANK) 150' CARPENTER RIPARIAN BUFFER

50' WATER HAZARD SEPARATIVE STREAM BUFFER (MEASURED FROM TOP OF BANK) 150' CARPENTER RIPARIAN BUFFER

50' WATER HAZARD SEPARATIVE STREAM BUFFER (MEASURED FROM TOP OF BANK) 150' CARPENTER RIPARIAN BUFFER

50' WATER HAZARD SEPARATIVE STREAM BUFFER (MEASURED FROM TOP OF BANK) 150' CARPENTER RIPARIAN BUFFER



LOT #	SO. FT.	ACRES
278*	2,257	0.0