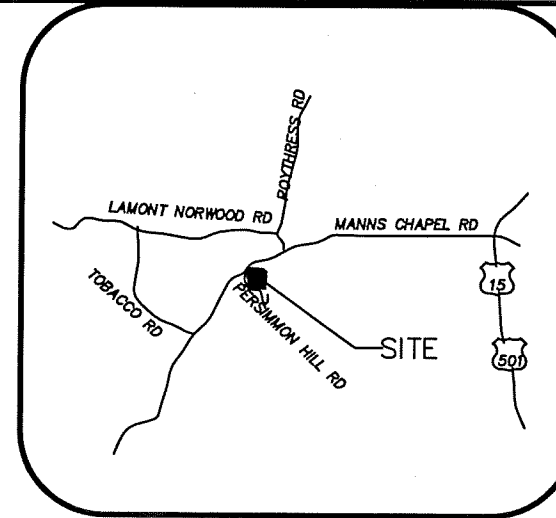
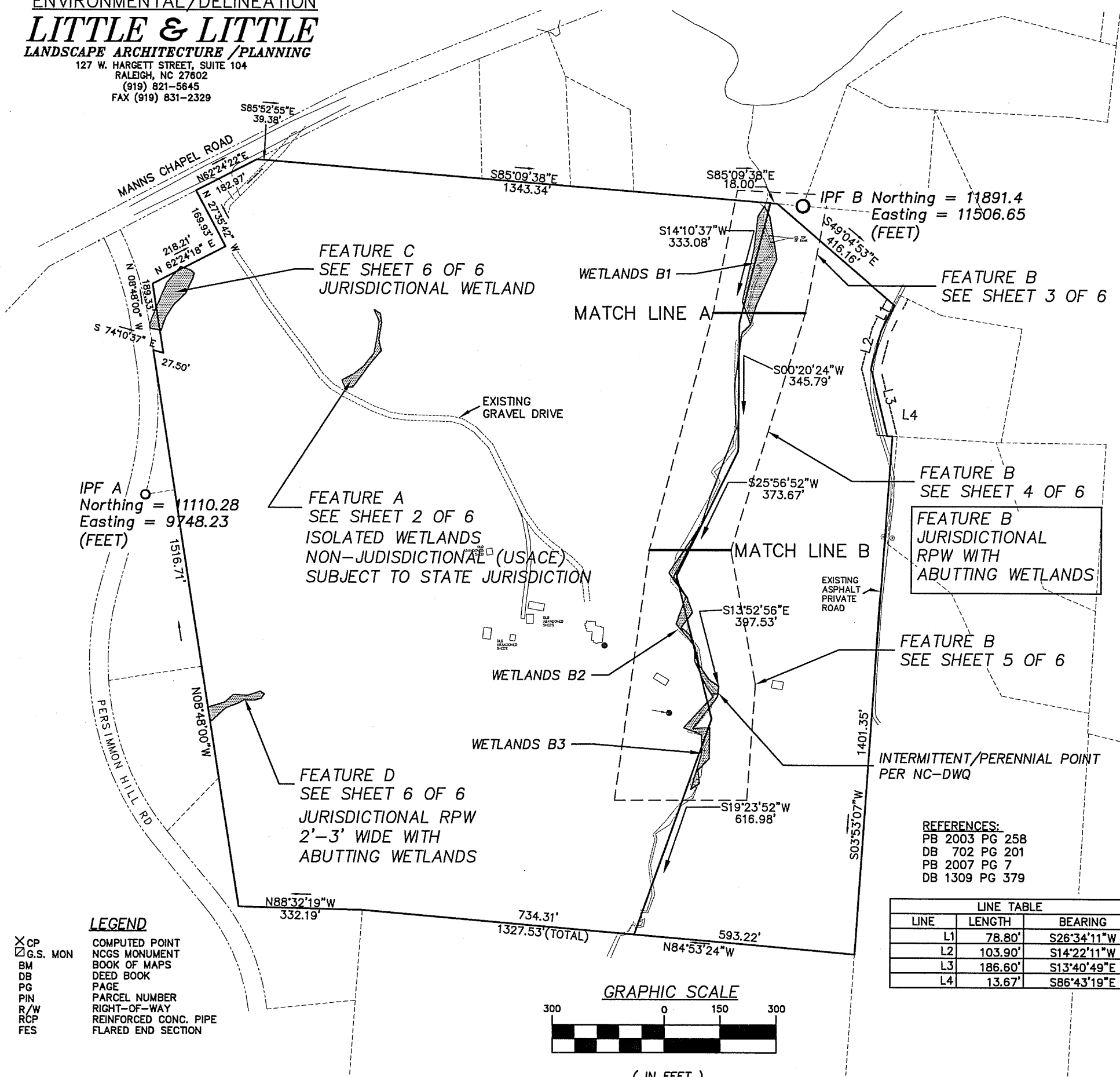


FIELD.01

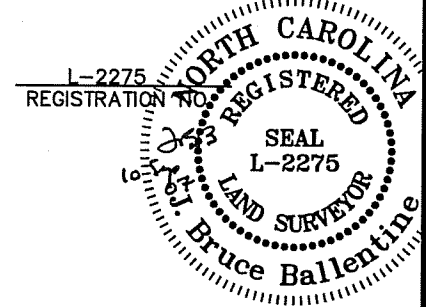
ENVIRONMENTAL/DELINEATION
LITTLE & LITTLE
 LANDSCAPE ARCHITECTURE / PLANNING
 127 W. HARGETT STREET, SUITE 104
 RALEIGH, NC 27602
 (919) 821-5645
 FAX (919) 831-2329



VICINITY MAP
 NOT TO SCALE.

SURVEYOR'S CERTIFICATION
 I, J. BRUCE BALLENTINE, HEREBY CERTIFY THAT THIS MAP WAS PREPARED UNDER MY SUPERVISION FROM AN ACTUAL FIELD SURVEY AND THAT TO THE BEST OF MY KNOWLEDGE AND BELIEF IT IS CORRECT IN ITS REPRESENTATION OF THE EXISTING SITE CONDITIONS.

J. Bruce Ballentine
 J. BRUCE BALLENTINE PLS
 10 Sep 07
 DATE



- NOTES:**
1. ALL DISTANCES ARE HORIZONTAL GROUND DISTANCES UNLESS OTHERWISE NOTED.
 2. AREAS COMPUTED BY COORDINATE COMPUTATION METHOD.
 3. OWNER'S ADDRESS:
 JAMES E. DIXON
 94 CHATHAM DRIVE
 CHAPEL HILL, NC 27516
 4. THIS PROPERTY DOES NOT LIE WITHIN A SPECIAL FLOOD PER FEMA PANELS 3710976500J & 3710976600J EFFECTIVE DATE FEBRUARY 2, 2007.
 5. THIS PROPERTY IS SUBJECT TO ALL EASEMENTS, BUFFERS AND RESTRICTIONS SHOWN HEREON AND ALL OTHERS OF RECORD NOT SHOWN HEREON.
 6. WETLANDS AND US WATERS DELINEATION PERFORMED BY LITTLE AND LITTLE.
 7. SEE SHEET 2 - 6 FOR WETLANDS AND US WATERS TRIBUTARY COORDINATES.

"THIS CERTIFIES THAT THIS COPY OF THIS PLAT IDENTIFIES AS WATERS OF THE U.S. OR WETLANDS ALL AREAS OF WATER OF THE U.S. INCLUDING WETLANDS, REGULATED PURSUANT TO SECTION 404 OF THE CLEAN WATER ACT AS DETERMINED BY THE UNDERSIGNED ON THIS DATE. UNLESS THERE IS A CHANGE IN LAW OR OUR PUBLISHED REGULATIONS, THIS DETERMINATION OF SECTION 404 JURISDICTION MAY BE RELIED UPON FOR A PERIOD NOT TO EXCEED FIVE YEARS FROM THIS DATE. THIS DETERMINATION WAS MADE UTILIZING THE 1987 CORPS OF ENGINEERS WETLANDS DELINEATION MANUAL."

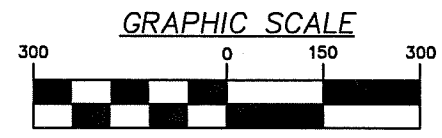
NAME: _____
 TITLE: _____
 DATE: _____

LEGEND

X CP	COMPUTED POINT
□ G.S. MON	NCGS MONUMENT
BM	BOOK OF MAPS
DB	DEED BOOK
PG	PAGE
PIN	PARCEL NUMBER
R/W	RIGHT-OF-WAY
RCP	REINFORCED CONC. PIPE
FES	FLARED END SECTION

REFERENCES:
 PB 2003 PG 258
 DB 702 PG 201
 PB 2007 PG 7
 DB 1309 PG 379

LINE TABLE		
LINE	LENGTH	BEARING
L1	78.80'	S26°34'11"W
L2	103.90'	S14°22'11"W
L3	186.60'	S13°40'49"E
L4	13.67'	S86°43'19"E



(IN FEET)
 1 inch = 300 ft.

BALLENTINE ASSOCIATES, P.A.
 221 PROVIDENCE ROAD, CHAPEL HILL, N.C. 27514
 (919) 929-0481

WETLANDS DELINEATION MAP OF

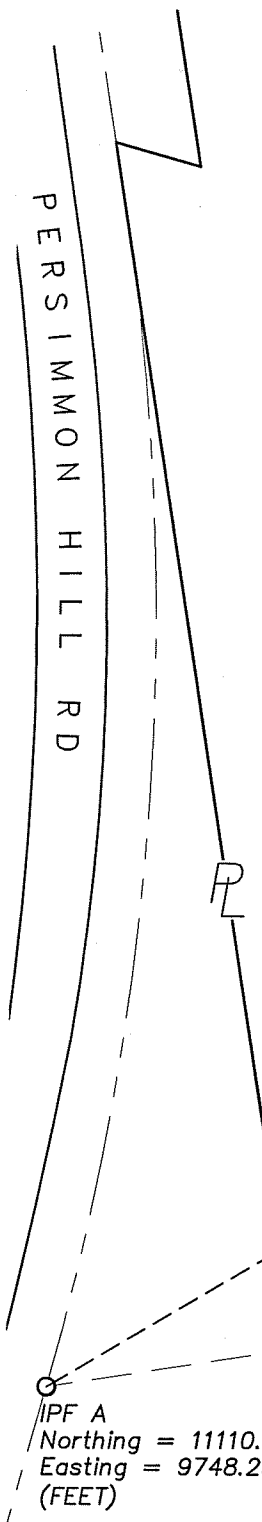
FIELDSTONE

JAMES E. DIXON (DB 702 PG 201)

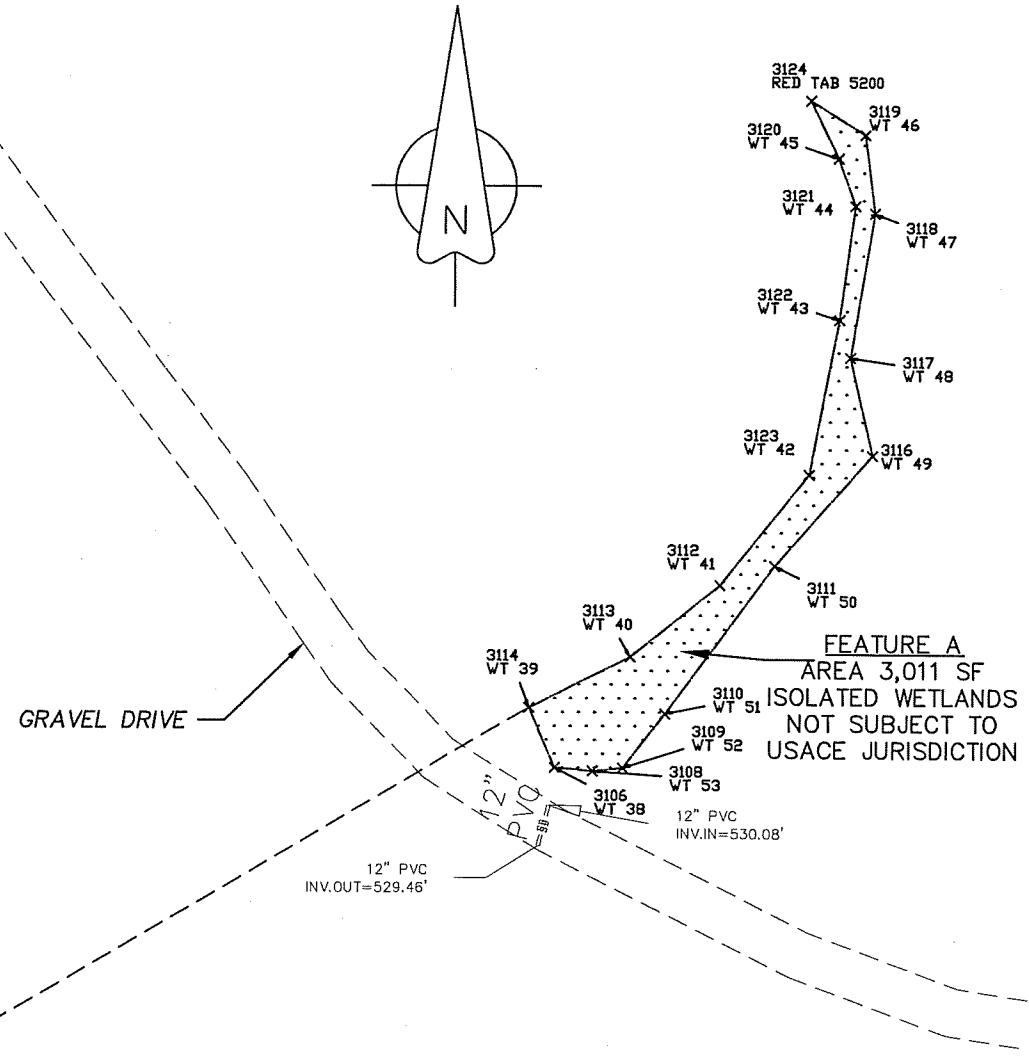
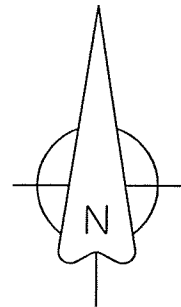
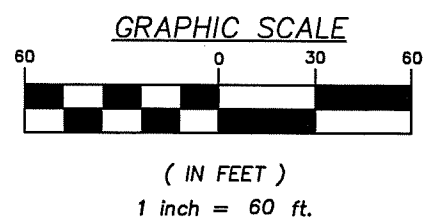
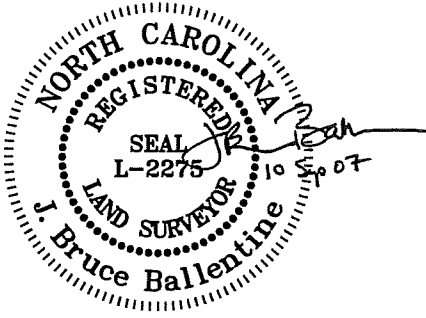
JOB #: 102002.00
 DATE: SEPT 7, 2007
 SCALE: 1" = 300'
 DRAWN BY: RAM
 REVIEWED BY: JRBD
 REVISIONS:

.2 SF
 66 SF
 .D -
 -SITE

ISOLATED WETLANDS - WATERS OF THE STATE OF NORTH CAROLINA LOCAL COORDINATES (FEET)			
Number	Description	Northing	Easting
3106	WT 38	11401.35	10280.42
3108	WT 53	11400.26	10292.21
3109	WT 52	11401.19	10301.55
3110	WT 51	11418.24	10314.53
3111	WT 50	11464.51	10348.33
3112	WT 41	11458.42	10331.27
3113	WT 40	11435.93	10303.70
3114	WT 39	11420.04	10272.37
3116	WT 49	11499.12	10378.46
3117	WT 48	11529.71	10371.39
3118	WT 47	11574.82	10378.83
3119	WT 46	11599.36	10375.64
3120	WT 45	11592.02	10367.43
3121	WT 44	11577.18	10372.67
3122	WT 43	11541.46	10367.95
3123	WT 42	11493.11	10358.87
3124	RED TAB 5200	11610.03	10358.73



N 59°25'01" E
 608.83'



"THIS CERTIFIES THAT THIS COPY OF THIS PLAT IDENTIFIES AS WATERS OF THE U.S. OR WETLANDS ALL AREAS OF WATER OF THE U.S. INCLUDING WETLANDS, REGULATED PURSUANT TO SECTION 404 OF THE CLEAN WATER ACT AS DETERMINED BY THE UNDERSIGNED ON THIS DATE. UNLESS THERE IS A CHANGE IN LAW OR OUR PUBLISHED REGULATIONS, THIS DETERMINATION OF SECTION 404 JURISDICTION MAY BE RELIED UPON FOR A PERIOD NOT TO EXCEED FIVE YEARS FROM THIS DATE. THIS DETERMINATION WAS MADE UTILIZING THE 1987 CORPS OF ENGINEERS WETLANDS DELINEATION MANUAL."

NAME: _____
 TITLE: _____
 DATE: _____

BALLENTINE ASSOCIATES, P.A.
 221 PROVIDENCE ROAD, CHAPEL HILL, N.C. 27514
 (919) 929-0481

WETLANDS DELINEATION MAP of
FEATURE A - FIELDSTONE
JAMES E. DIXON (DB 702 PG 201)

JOB #: 102002.00
 DATE: SEPT 7, 2007
 SCALE: 1" = 60'
 DRAWN BY: RAM
 REVIEWED BY: JRBD
 REVISIONS:

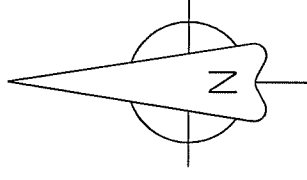
ENVIRONMENTAL/DELINEATION

LITTLE & LITTLE

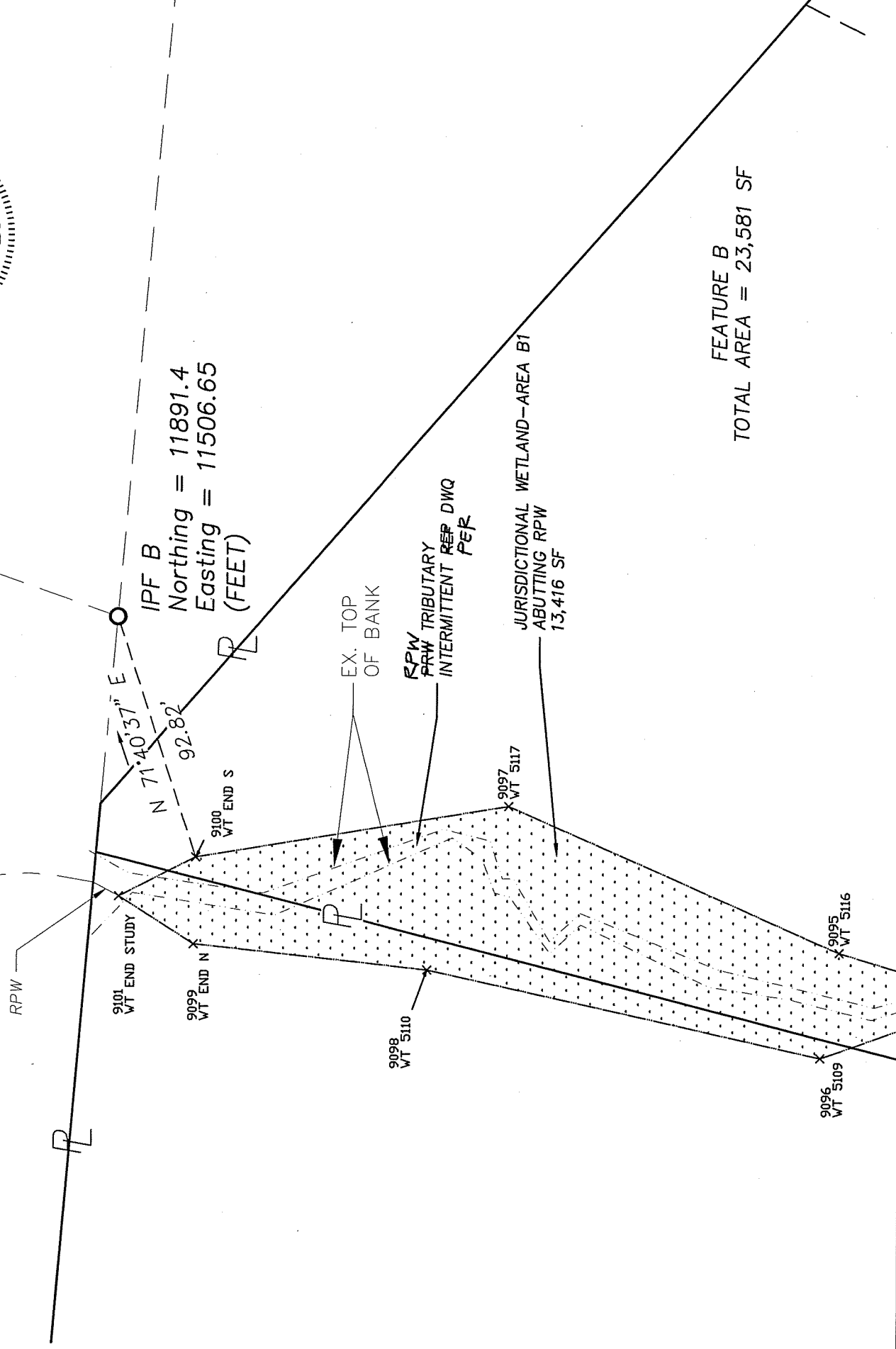
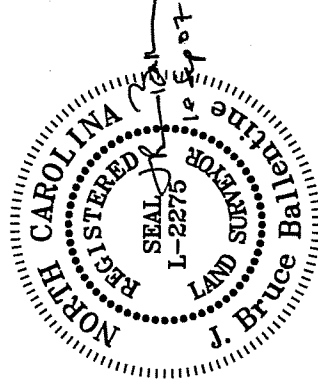
LANDSCAPE ARCHITECTURE / PLANNING
127 W. HARGETT STREET, SUITE 104
RALEIGH, NC 27602
(919) 821-5645
FAX (919) 651-2329

"THIS CERTIFIES THAT THIS COPY OF THIS PLAT IDENTIFIES AS WATERS OF THE U.S. OR WETLANDS ALL AREAS OF WATER OF THE U.S. INCLUDING WETLANDS, REGULATED PURSUANT TO SECTION 404 OF THE CLEAN WATER ACT AS DETERMINED BY THE UNDERSIGNED ON THIS DATE. UNLESS THERE IS A CHANGE IN LAW OR OUR PUBLISHED REGULATIONS, THIS DETERMINATION OF SECTION 404 JURISDICTION MAY BE RELIED UPON FOR A PERIOD NOT TO EXCEED FIVE YEARS FROM THIS DATE. THIS DETERMINATION WAS MADE UTILIZING THE 1987 CORPS OF ENGINEERS WETLANDS DELINEATION MANUAL."

NAME: _____
TITLE: _____
DATE: _____



WATERS OF THE UNITED STATES TRIBUTARY LOCAL COORDINATES (FEET)			
Number	Raw Desc	Northing	Easting
9095	WT 5116	11626.44	11384.63
9096	WT 5109	11633.07	11345.94
9097	WT 5117	11747.55	11437.64
9098	WT 5110	11776.97	11377.48
9099	WT END N	11862.88	11386.63
9100	WT END S	11862.22	11418.54
9101	WT END STUDY	11890.49	11404.17



MATCH LINE A

SHEET 3 OF 6

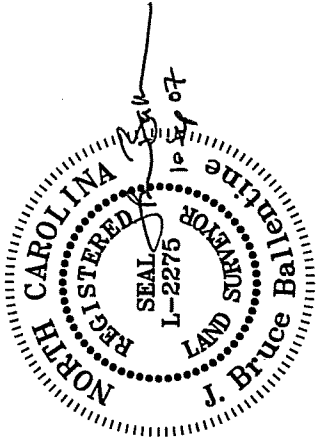
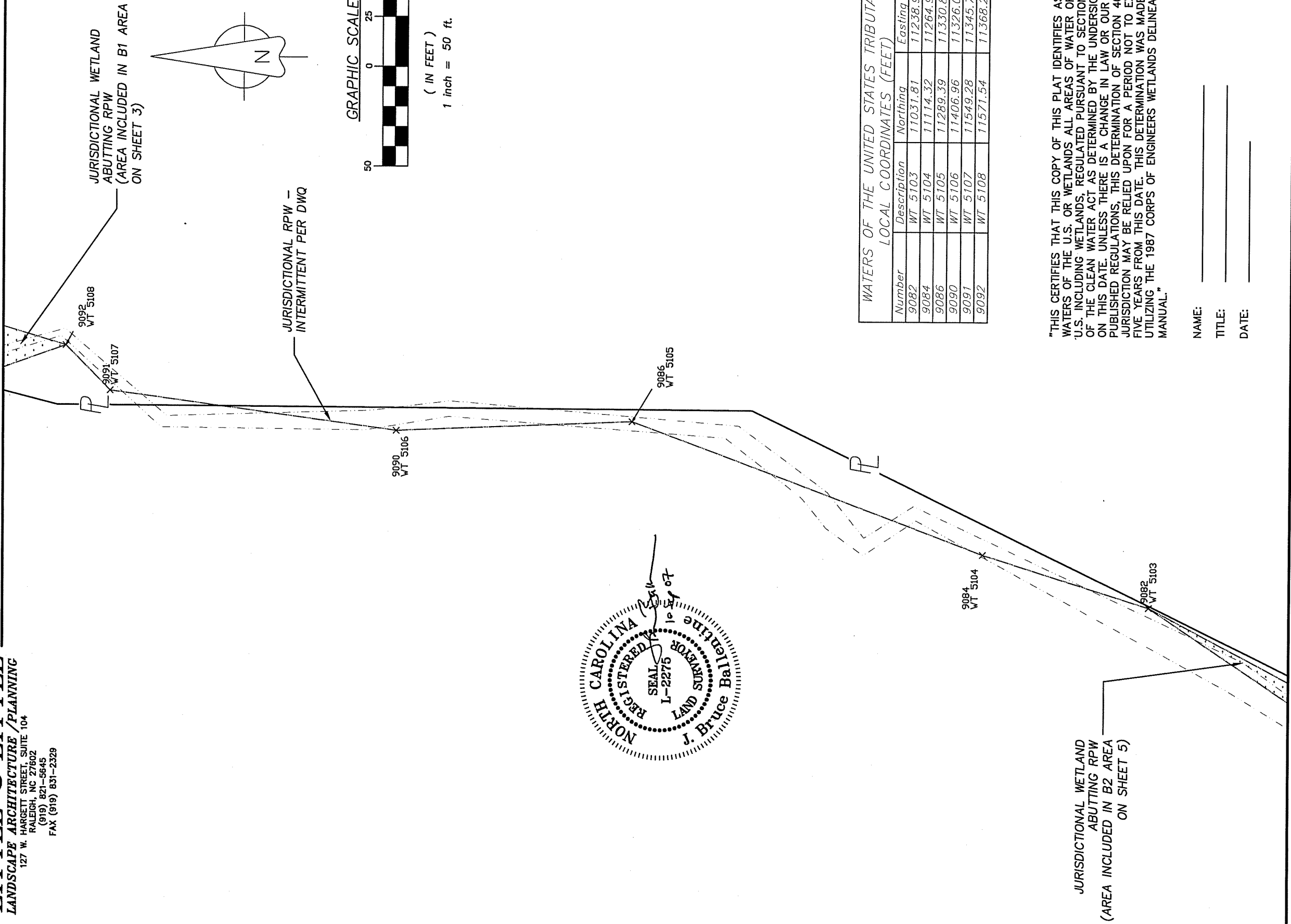
221 PROVIDENCE ROAD, CHAPEL HILL, N.C. 27514
(919) 929 - 0461

WETLANDS DELINEATION MAP OF
FEATURE B - FIELDSTONE
JAMES E. DIXON (DB 702 PG 201)

JOB #: 102002.00
SCALE: 1" = 50'
DATE: SEPT 7, 2007
DRAWN BY: RAM
REVIEWED BY: JRBD
REVISIONS:

ENVIRONMENTAL/DELINEATION
LITTLE & LITTLE
 LANDSCAPE ARCHITECTURE/PLANNING
 127 W. HARGETT STREET, SUITE 104
 RALEIGH, NC 27602
 (919) 821-5645
 FAX (919) 831-2329

MATCH LINE A



WATERS OF THE UNITED STATES TRIBUTARY
 LOCAL COORDINATES (FEET)

Number	Description	Northing	Eastng
9082	WT 5103	11031.81	11238.97
9084	WT 5104	11114.32	11264.90
9086	WT 5105	11289.39	11330.82
9090	WT 5106	11406.96	11326.07
9091	WT 5107	11549.28	11345.70
9092	WT 5108	11571.54	11368.21

"THIS CERTIFIES THAT THIS COPY OF THIS PLAT IDENTIFIES AS WATERS OF THE U.S. OR WETLANDS ALL AREAS OF WATER OF THE U.S. INCLUDING WETLANDS, REGULATED PURSUANT TO SECTION 404 OF THE CLEAN WATER ACT AS DETERMINED BY THE UNDERSIGNED ON THIS DATE. UNLESS THERE IS A CHANGE IN LAW OR OUR PUBLISHED REGULATIONS, THIS DETERMINATION OF SECTION 404 JURISDICTION MAY BE RELIED UPON FOR A PERIOD NOT TO EXCEED FIVE YEARS FROM THIS DATE. THIS DETERMINATION WAS MADE UTILIZING THE 1987 CORPS OF ENGINEERS WETLANDS DELINEATION MANUAL."

NAME: _____
 TITLE: _____
 DATE: _____

JURISDICTIONAL WETLAND
 ABUTTING RPW
 (AREA INCLUDED IN B2 AREA
 ON SHEET 5)

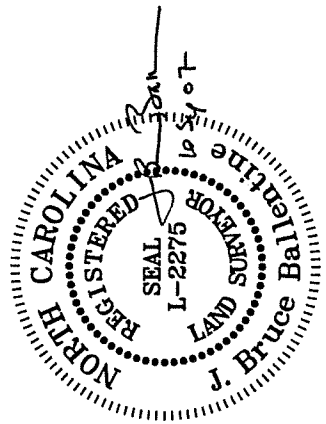
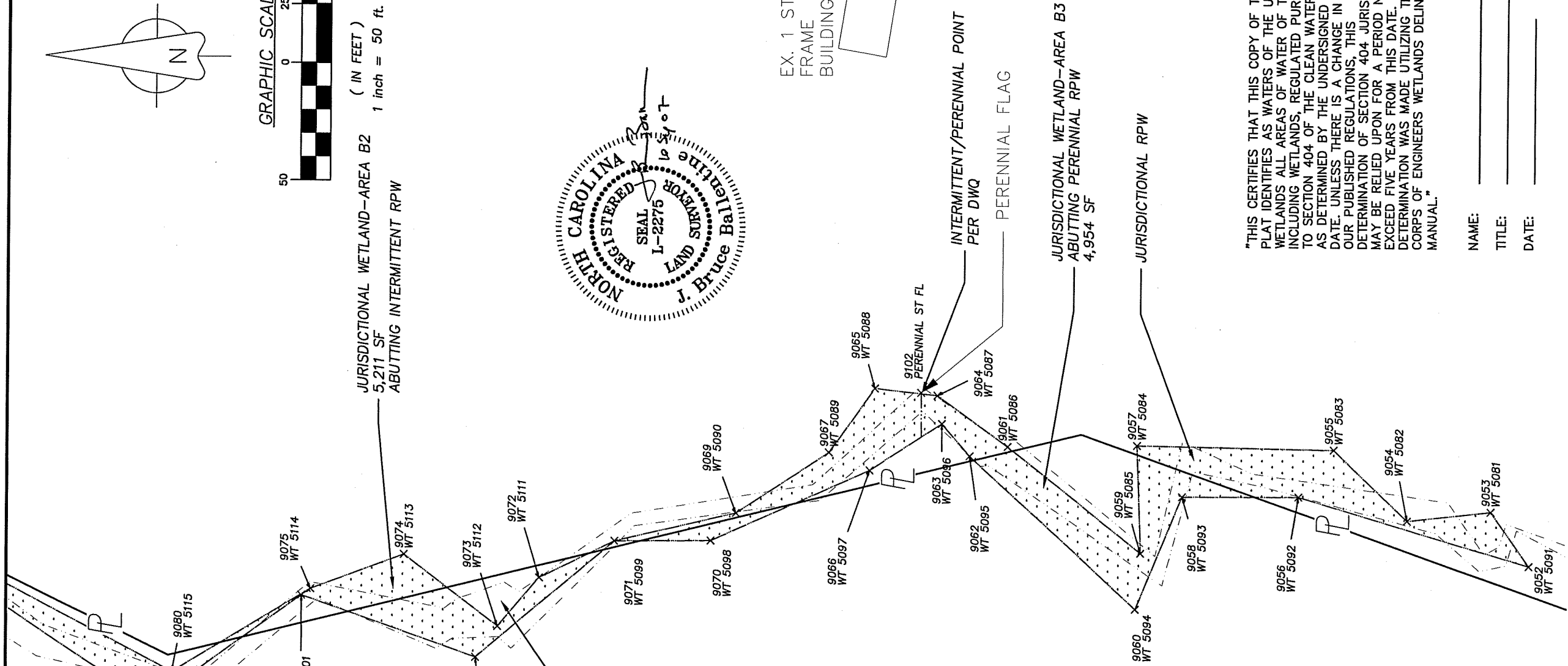
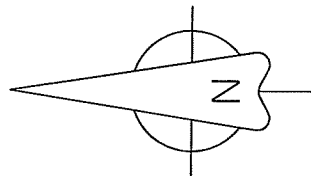
MATCH LINE B

SHEET 4 OF 6

BALLENTINE ASSOCIATES, P.A.
 221 PROVIDENCE ROAD, CHAPEL HILL, N.C. 27514
 (919) 929 - 0481

WETLANDS DELINEATION MAP OF
FEATURE B - FIELDSTONE
JAMES E. DIXON (DB 702 PG 201)

JOB #: 102002.00
 SCALE: 1" = 50'
 DATE: SEPT 7, 2007
 DRAWN BY: RAM
 REVIEWED BY: JRBD
 REVISIONS:



WATERS OF THE UNITED STATES TRIBUTARY LOCAL COORDINATES (FEET)

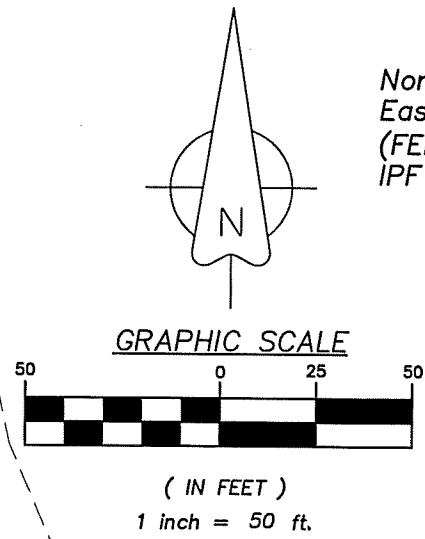
Number	Description	Northing	Eastng
9052	WT 5091	10317.79	11213.65
9053	WT 5081	10334.15	11236.65
9054	WT 5082	10369.53	11232.68
9055	WT 5083	10401.13	11262.52
9056	WT 5092	10415.84	11242.47
9057	WT 5084	10484.32	11263.81
9058	WT 5093	10464.96	11242.17
9059	WT 5085	10482.49	11218.02
9060	WT 5094	10484.59	11194.24
9061	WT 5086	10539.06	11262.94
9062	WT 5095	10555.14	11258.85
9063	WT 5096	10566.94	11272.56
9064	WT 5087	10568.95	11284.56
9065	WT 5088	10595.72	11287.49
9066	WT 5097	10597.77	11252.66
9067	WT 5089	10614.98	11260.19
9068	WT 5097	10597.54	11252.04
9069	WT 5090	10654.03	11234.30
9070	WT 5098	10664.65	11222.54
9071	WT 5099	10705.52	11222.24
9072	WT 5111	10737.02	11206.55
9073	WT 5112	10754.58	11185.85
9074	WT 5113	10794.59	11218.24
9075	WT 5114	10833.91	11201.47
9076	WT 5101	10837.72	11198.72
9077	WT 5100	10763.84	11172.65
9079	WT 5102	10901.70	11152.37
9080	WT 5115	10892.38	11166.00
9102	PERENNIAL ST FL	10575.84	11285.68

"THIS CERTIFIES THAT THIS COPY OF THIS PLAT IDENTIFIES AS WATERS OF THE U.S. OR INCLUDING ALL AREAS OF WATER OF THE U.S. TO SECTION 404 OF THE CLEAN WATER ACT AS DETERMINED BY THE UNDERSIGNED ON THIS DATE. UNLESS THERE IS A CHANGE IN LAW OR OUR PUBLISHED REGULATIONS. THIS DETERMINATION OF SECTION 404 JURISDICTION MAY BE RELIED UPON FOR A PERIOD NOT TO EXCEED FIVE YEARS FROM THIS DATE. THIS DETERMINATION WAS MADE UTILIZING THE 1987 CORPS OF ENGINEERS WETLANDS DELINEATION MANUAL."

NAME: _____
 TITLE: _____
 DATE: _____

WATERS OF THE UNITED STATES TRIBUTARY LOCAL COORDINATES (FEET)

Number	Description	Northing	Easting
9036	WT 5061	11725.96	9877.64
9037	WT 5063	11714.85	9867.13
9038	WT 5062	11707.01	9876.19
9039	WT 5064	11724.67	9840.00
9040	WT 5065	11680.68	9803.23
9041	WT 5066	11614.74	9775.62
9042	WT 5067	11570.64	9758.29
9043	WT 5068	11558.25	9758.66
9046	WT 5069	11551.92	9787.94
9047	WT 5070	11588.59	9800.60
9048	WT 5071	11621.13	9821.36
9049	WT 5072	11653.52	9854.36
9050	WT 5073	11692.20	9872.30



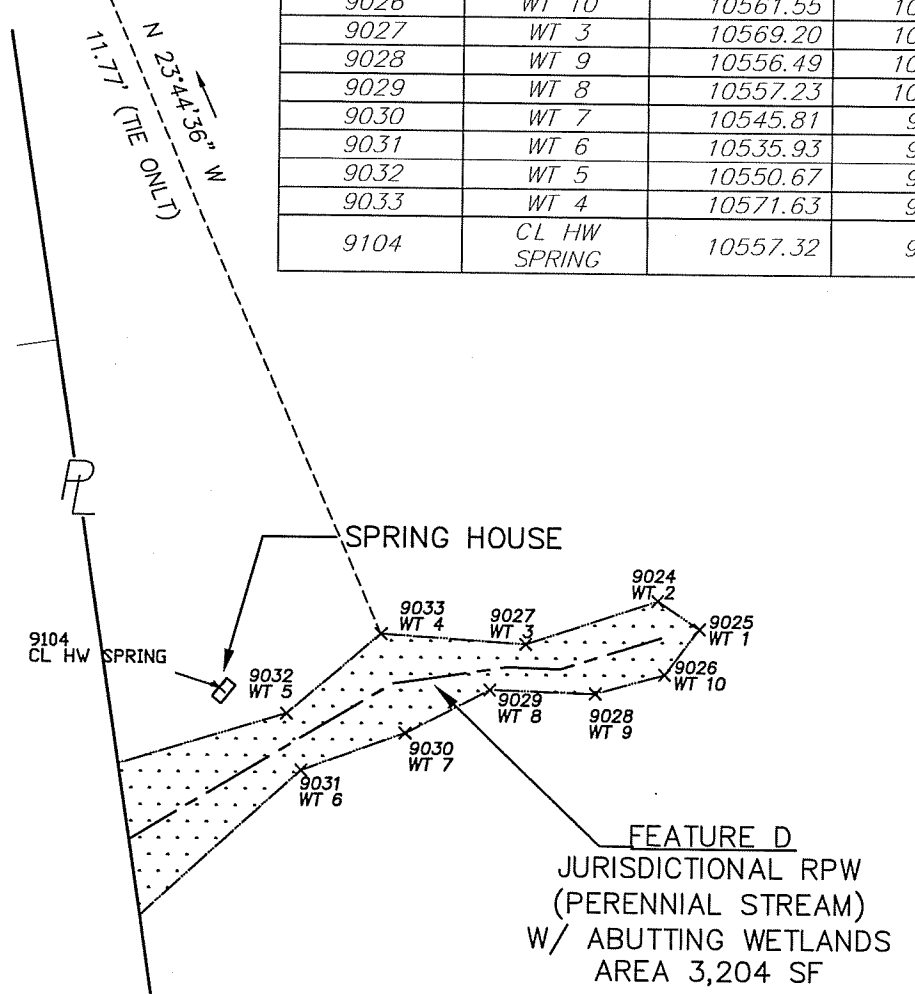
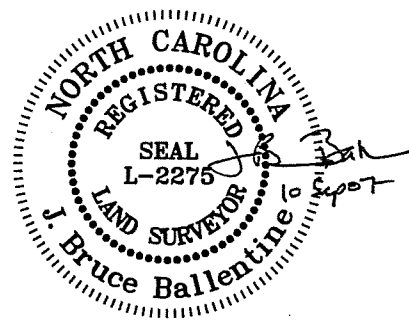
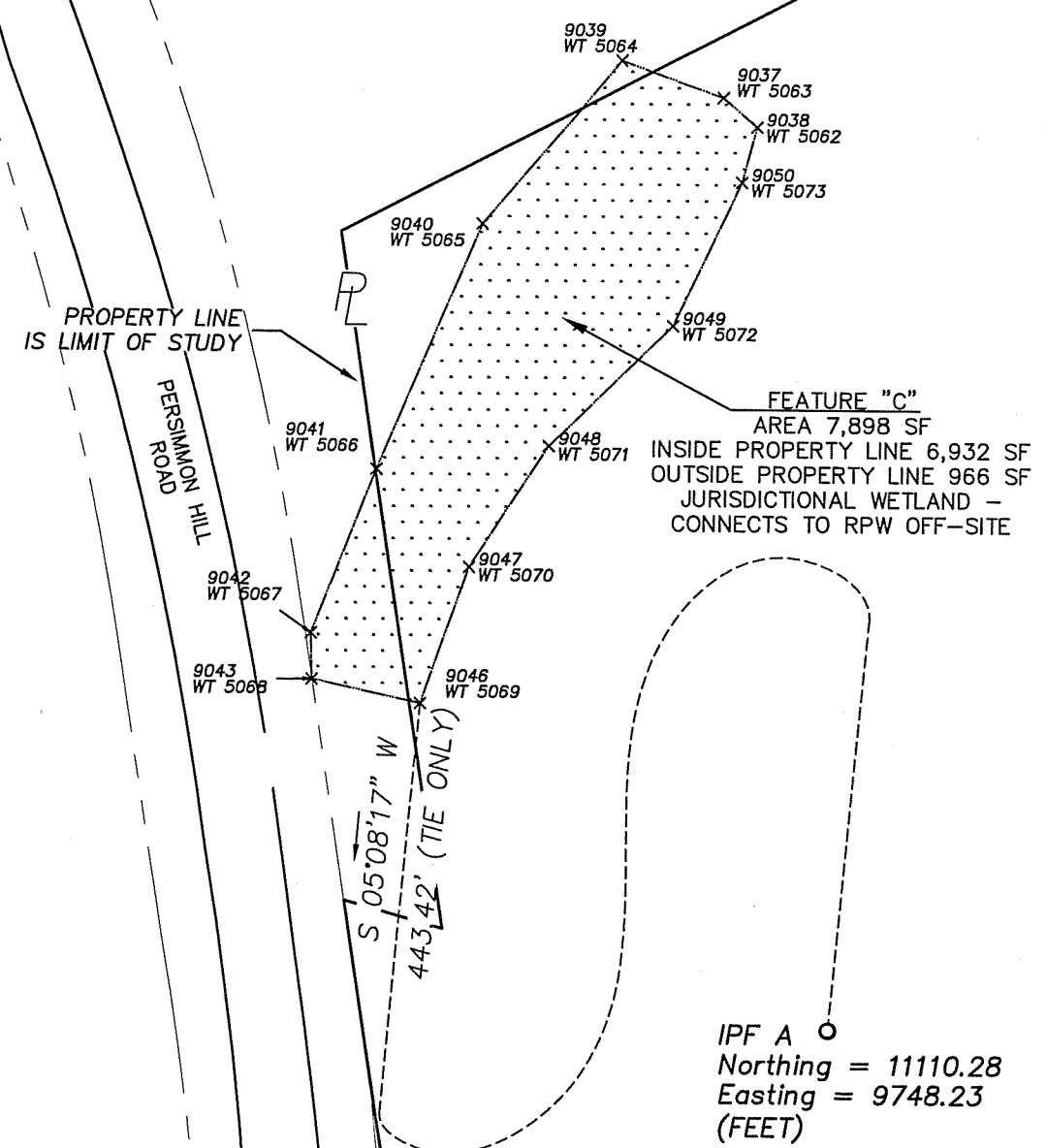
Northing = 11110.28
 Easting = 9748.23
 (FEET)
 IPF A

"THIS CERTIFIES THAT THIS COPY OF THIS PLAT IDENTIFIES AS WATERS OF THE U.S. OR WETLANDS ALL AREAS OF WATER OF THE U.S. INCLUDING WETLANDS, REGULATED PURSUANT TO SECTION 404 OF THE CLEAN WATER ACT AS DETERMINED BY THE UNDERSIGNED ON THIS DATE. UNLESS THERE IS A CHANGE IN LAW OR OUR PUBLISHED REGULATIONS, THIS DETERMINATION OF SECTION 404 JURISDICTION MAY BE RELIED UPON FOR A PERIOD NOT TO EXCEED FIVE YEARS FROM THIS DATE. THIS DETERMINATION WAS MADE UTILIZING THE 1987 CORPS OF ENGINEERS WETLANDS DELINEATION MANUAL."

NAME: _____
 TITLE: _____
 DATE: _____

WATERS OF THE UNITED STATES TRIBUTARY LOCAL COORDINATES (FEET)

Number	Description	Northing	Easting
9024	WT 2	10580.69	10056.49
9025	WT 1	10573.45	10067.56
9026	WT 10	10561.55	10058.50
9027	WT 3	10569.20	10022.56
9028	WT 9	10556.49	10040.60
9029	WT 8	10557.23	10013.34
9030	WT 7	10545.81	9991.51
9031	WT 6	10535.93	9964.67
9032	WT 5	10550.67	9960.81
9033	WT 4	10571.63	9985.16
9104	CL HW SPRING	10557.32	9943.26



WETLANDS DELINEATION MAP OF
 FEATURES C & D - FIELDSTONE
 JAMES E. DIXON (DB 702 PG 201)

JOB #: 102002.00
 DATE: SEPT 7, 2007
 SCALE: 1" = 50'
 DRAWN BY: RAM
 REVIEWED BY: JRBD
 REVISIONS: