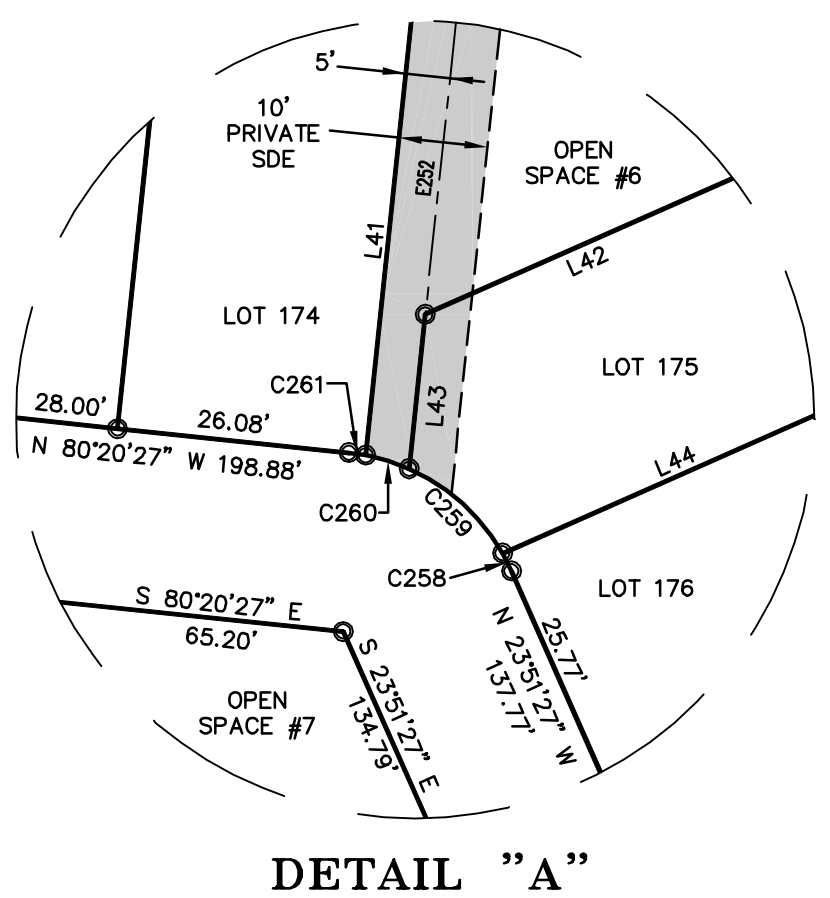


I HEREBY CERTIFY THAT THIS PLAN IS OF THE FOLLOWING TYPE:
 G.S. 47-30 (f)(1)(g). THIS SURVEY CREATES SUBDIVISION OF
 LAND WITHIN THE AREA OF A COUNTY OR MUNICIPALITY THAT
 HAS AN ORDINANCE THAT REGULATES PARCELS OF LAND.

JOSEPH N. GRADY, JR. PLS L-4163



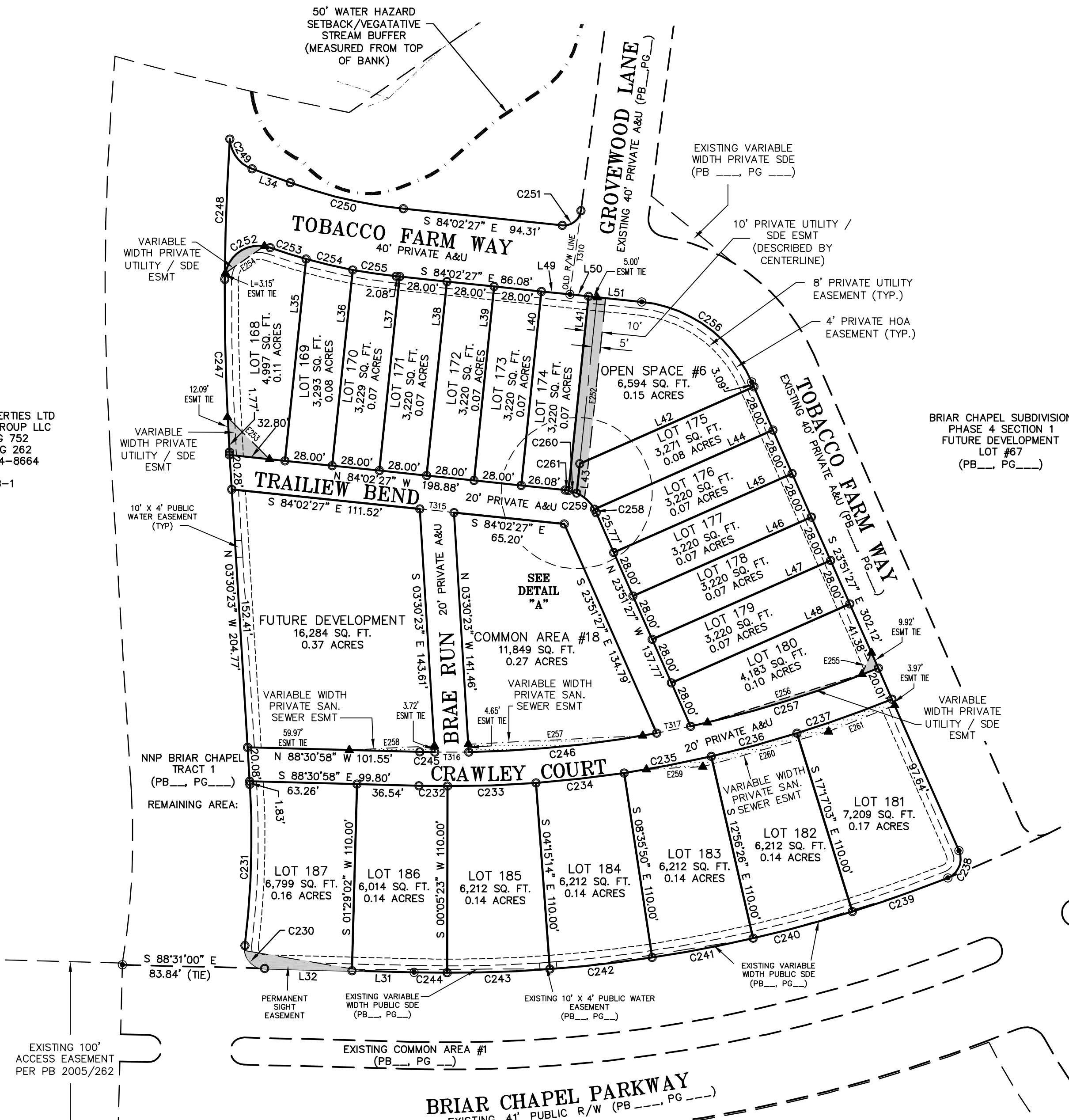
DETAIL "A"

LINE	LENGTH	BEARING
T310	49.76'	N 07°27'16" E
T314	20.86'	S 32°47'52" E
T315	20.28'	S 84°02'27" E
T316	20.03'	N 89°52'09" E
T317	20.48'	N 78°36'36" E

LINE	LENGTH	BEARING
L20	23.25'	S 10°39'28" E
L21	28.97'	S 74°25'07" E
L22	21.85'	S 74°25'07" E
L23	20.17'	S 49°00'40" E
L24	20.00'	S 49°00'40" E
L25	20.17'	N 76°21'34" E
L26	20.00'	S 10°39'28" E
L27	3.25'	S 10°39'28" E
L28	36.82'	S 10°39'28" E
L29	32.53'	S 02°05'43" E
L30	17.30'	S 49°00'40" E
L31	36.54'	S 88°31'00" E
L32	51.57'	S 88°31'00" E
L34	23.92'	S 70°00'41" E
L35	118.58'	N 05°57'33" E
L36	116.00'	N 05°57'33" E
L37	115.00'	N 05°57'33" E
L38	115.00'	N 05°57'33" E
L39	115.00'	N 05°57'33" E
L40	115.00'	N 05°57'33" E
L41	115.08'	N 05°57'33" E
L42	112.20'	S 66°08'33" W
L43	17.40'	N 05°57'33" E
L44	115.11'	N 66°08'33" E
L45	115.00'	N 66°08'33" E
L46	115.00'	N 66°08'33" E
L47	115.00'	N 66°08'33" E
L48	115.00'	N 66°08'33" E
L49	16.93'	S 84°02'27" E
L50	11.07'	S 84°02'27" E
L51	31.40'	S 84°02'27" E

CURVE	RADIUS	LENGTH	CHORD BEARING	CHORD DISTANCE	DELTA	TANGENT
C215	196.00'	251.93'	S 26°09'56" E	234.94'	73°38'48"	146.75'
C216	10.00'	18.92'	N 09°56'37" E	15.98'	108°06'26"	13.29'
C217	320.00'	62.72'	S 48°43'00" E	62.62'	111°3'49"	31.46'
C218	320.00'	82.27'	S 61°41'48" E	82.04'	143°43'47"	41.36'
C219	320.00'	29.92'	S 71°44'24" E	29.91'	52°1'26"	14.97'
C220	180.00'	34.56'	N 68°55'07" W	34.51'	11°00'01"	17.33'
C221	180.00'	45.26'	N 56°12'53" W	45.14'	14°24'27"	23.75'
C222	140.00'	151.93'	N 69°34'06" W	144.59'	62°10'44"	84.42'
C223	156.00'	100.26'	S 07°45'14" W	98.54'	36°49'24"	51.93'
C224	156.00'	100.26'	S 44°34'38" W	98.54'	36°49'24"	51.93'
C225	10.00'	10.94'	N 85°40'17" W	10.40'	62°40'46"	6.09'
C226	160.00'	23.03'	N 53°08'06" W	23.01'	81°4'52"	11.54'
C227	160.00'	55.97'	N 67°16'48" W	55.68'	20°02'33"	28.27'
C228	160.00'	41.31'	N 84°41'54" W	41.20'	14°47'39"	20.77'
C229	160.00'	23.91'	S 83°37'24" W	23.89'	8°33'44"	11.98'
C230	12.00'	20.00'	S 40°46'07" E	17.76'	95°29'46"	13.21'
C231	520.00'	95.17'	N 01°44'11" E	95.03'	10°29'09"	47.72'
C232	690.00'	16.79'	S 89°12'48" E	16.79'	1°23'40"	8.40'
C233	690.00'	52.31'	N 87°55'04" E	52.29'	4°20'36"	26.17'
C234	690.00'	52.31'	N 83°34'28" E	52.29'	4°20'36"	26.17'
C235	690.00'	52.31'	N 79°13'52" E	52.29'	4°20'36"	26.17'
C236	690.00'	52.31'	N 74°53'15" E	52.29'	4°20'36"	26.17'
C237	690.00'	59.53'	N 70°14'39" E	59.51'	4°56'36"	29.78'
C238	12.00'	19.33'	N 22°17'34" E	17.31'	92°18'00"	12.49'
C239	800.00'	59.66'	N 70°34'45" E	59.65'	4°16'23"	29.85'
C240	800.00'	60.65'	N 74°53'15" E	60.63'	4°20'36"	30.34'
C241	800.00'	60.65'	N 79°13'52" E	60.63'	4°20'36"	30.34'
C242	800.00'	60.65'	N 83°34'28" E	60.63'	4°20'36"	30.34'
C243	800.00'	60.65'	N 87°55'04" E	60.63'	4°20'36"	30.34'
C244	800.00'	19.47'	S 89°12'48" E	19.47'	1°23'40"	9.74'
C245	670.00'	8.86'	S 88°53'42" E	8.86'	0°45'29"	4.43'
C246	670.00'	111.40'	N 84°14'57" E	111.28'	9°31'36"	55.83'
C247	1480.00'	101.87'	S 01°32'05" E	101.85'	3°56'37"	50.95'
C248	1480.00'	82.72'	S 02°02'18" W	82.71'	3°12'08"	41.37'
C249	20.00'	23.18'	S 36°48'38" E	21.90'	66°24'06"	13.09'
C250	280.00'	68.56'	S 77°01'34" E	68.39'	14°01'47"	34.45'
C251	10.00'	15.45'	N 51°42'24" E	13.96'	88°30'17"	9.74'
C252	20.00'	38.12'	S 55°02'12" W	32.60'	109°11'56"	28.14'
C253	320.00'	22.20'	S 72°21'06" E	22.20'	3°58'32"	11.11'
C254	320.00'	28.23'	S 76°52'00" E	28.22'	5°03'16"	14.12'
C255	320.00'	25.95'	S 81°43'03" E	25.95'	4°38'49"	12.98'
C256	80.00'	84.03'	N 53°56'57" W	80.22'	60°11'01"	45.36'
C257	670.00'	115.92'	N 72°46'39" E	115.78'	9°54'47"	58.10'
C258	22.50'	2.24'	N 26°42'25" W	2.24'	5°41'57"	1.12'
C259	22.50'	14.36'	N 47°50'27" W	14.12'	36°34'07"	7.43'
C260	22.50'	5.11'	N 72°38'01" W	5.10'	13°01'01"	2.57'
C261	22.50'	1.92'	N 81°35'29" W	1.92'	4°53'56"	0.96'

LINE	LENGTH	BEARING
E249	107.41'	S 44°39'04" E
E250	20.02'	S 42°40'42" W
E251	108.35'	S 44°39'04" E
E252	98.69'	N 05°57'33" E
E253	34.86'	N 45°10'03" W
E254	27.93'	S 55°21'37" W
E255	13.75'	N 23°50'47" E
E256	95.48'	N 72°36'08" E
E257	102.92'	S 87°11'37" W
E258	50.26'	S 87°11'37" W
E259	33.29'	S 87°11'37" W
E260	76.90'	N 74°23'14" E
E261	42.00'	N 68°24'13" E



GENERAL NOTES

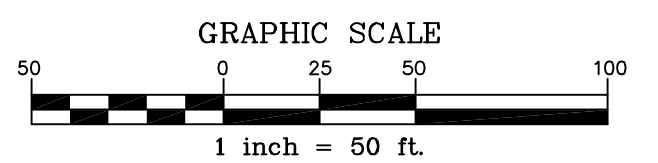
- SEE SHEET 1 OF 6 FOR GENERAL NOTES AND CERTIFICATES.
- SEE SHEET 2 OF 6 FOR PUBLIC 10'x4' WATER EASEMENT DETAIL.
- 4' PRIVATE HOA EASEMENT OFFSET AND PARALLEL TO R/W.
- 8' PRIVATE UTILITY EASEMENT OFFSET AND PARALLEL TO R/W.
- SEE SHEET 2 OF 6 FOR PRIVATE EASEMENT DETAIL.

CAMERON PROPERTIES LTD & FIVE STAR GROUP LLC
 DB 833, PG 752
 PB 2005, PG 262
 PIN: 9765-64-8664

TRACT B-1

LEGEND

- EXISTING IRON PIPE
- IRON PIPE SET
- CALCULATED POINT
- STORM DRAIN EASEMENT
- VARIABLE WIDTH PUBLIC SIDE
- PRIVATE A&U
- PRIVATE ACCESS AND UTILITY EASEMENT



REVISIONS:

SURVEY FOR:
 NEWLAND COMMUNITIES
 5860 FAYETTEVILLE ROAD
 SUITE 201
 DURHAM, NORTH CAROLINA 27713

**BRIAR CHAPEL
 PHASE 4 SECTION 2
 SUBDIVISION, EASEMENT DEDICATION
 & RIGHT-OF-WAY DEDICATION PLAN**

PROJECT NO: NEW-05000
 FILENAME: NEW-05000-F14
 SURVEYOR: JNG
 DRAWN BY: EMM
 SCALE: 1"=50'
 DATE: 08/08/2007
 SHEET NO: 6-6