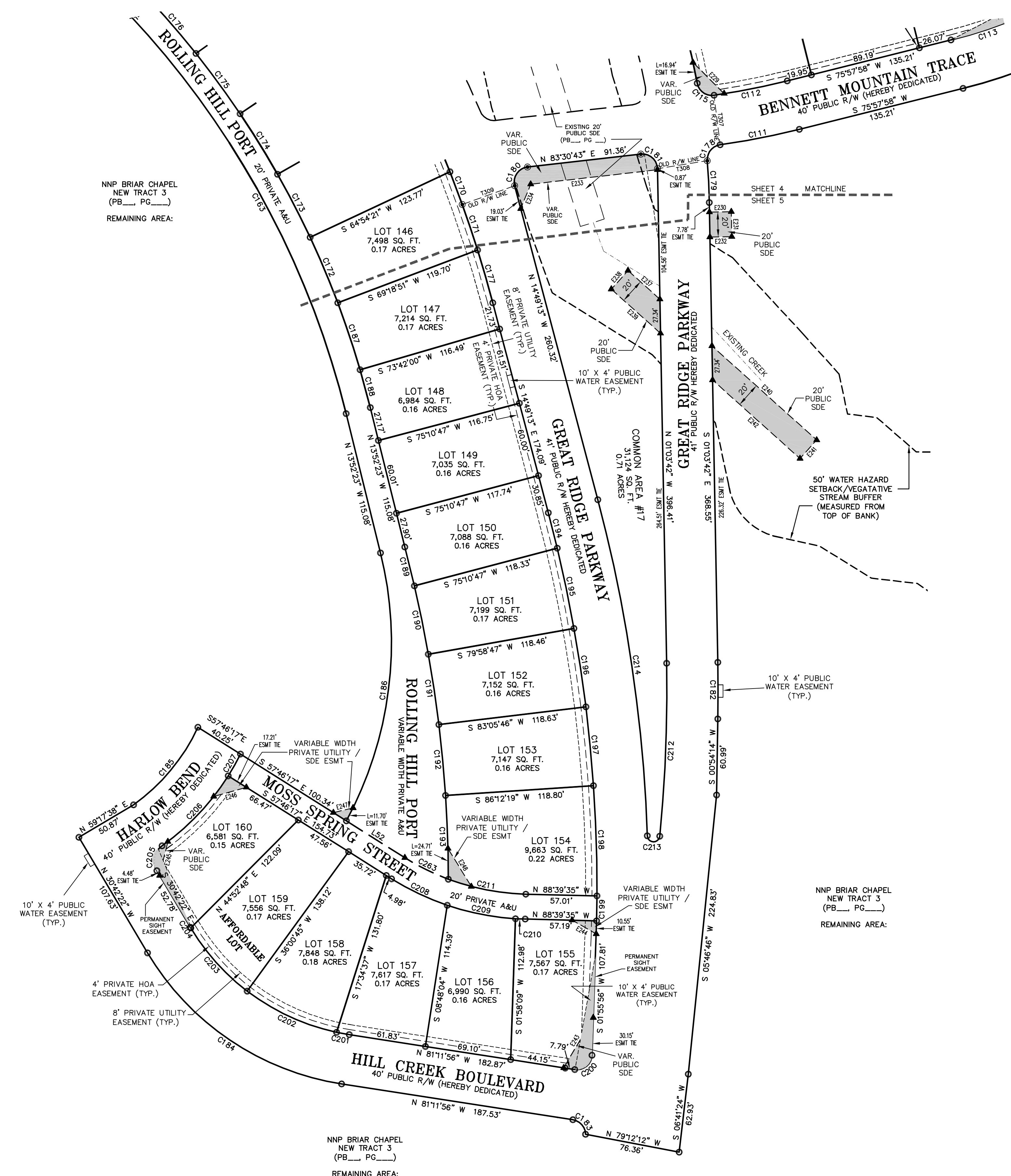


I HEREBY CERTIFY THAT THIS PLAT IS OF THE FOLLOWING TYPE:
G.S. 47-30 (f)(1)(g). THIS SURVEY CREATES SUBDIVISION OF
LAND WITHIN THE AREA OF A COUNTY OR MUNICIPALITY THAT
HAS AN ORDINANCE THAT REGULATES PARCELS OF LAND.

JOSEPH N. GRADY, JR. PLS L-4163

**THE JOHN R. MCADAMS
COMPANY, INC.**
ENGINEERS/PLANNERS/SURVEYORS
RESEARCH TRIANGLE PARK, NC
P.O. BOX 14005 ZIP 27709-4005
(919) 361-5000



LINE	LENGTH	BEARING
L52	55.40'	N 57°46'17" W

LINE	LENGTH	BEARING
E229	35.43'	S 45°01'57" E
E230	17.51'	S 88°56'16" W
E231	20.00'	S 01°03'44" E
E232	17.51'	S 88°56'16" W
E233	102.22'	S 83°30'43" W
E234	21.15'	N 22°05'06" E
E237	34.32'	S 48°04'31" E
E238	20.00'	N 41°55'29" E
E239	52.96'	N 48°04'31" W
E240	112.83'	N 48°04'31" W
E241	20.00'	N 41°55'29" E
E242	94.19'	S 48°04'31" E
E243	46.66'	S 30°32'32" W
E244	22.19'	S 60°16'59" F
E245	27.92'	S 13°34'05" W
E246	27.18'	S 72°20'01" W
E247	16.24'	S 72°11'01" W
E248	35.79'	N 31°29'16" W

LINE	LENGTH	BEARING
T307	40.01'	N 07°00'29" W
T308	40.42'	N 80°58'28" E
T309	44.67'	S 70°18'33" W

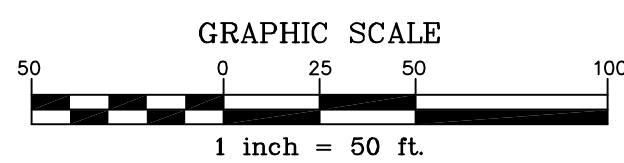
CURVE	RADIUS	LENGTH	CHORD BEARING	CHORD DISTANCE	DELTA	TANGENT
C111	620.00'	64.70'	N 78°57'21" E	64.67'	5°58'45"	32.38
C112	580.00'	59.80'	N 78°55'10" E	59.77'	5°54'27"	29.93
C113	380.00'	60.20'	N 71°25'39" E	60.14'	8°04'39"	30.17
C115	12.00'	18.32'	S 64°22'49" E	18.60'	87°29'35"	11.49
C170	971.00'	27.91'	N 20°30'52" W	27.91'	138°49'	13.96
C171	971.00'	38.52'	N 18°33'16" W	38.51'	216°22"	19.26
C172	740.00'	56.94'	N 22°53'24" W	56.92'	4°24'30"	28.48
C173	740.00'	56.94'	N 27°17'54" W	56.92'	4°24'30"	28.48
C174	740.00'	56.94'	N 31°42'25" W	56.92'	4°24'30"	28.48
C175	740.00'	60.01'	N 38°14'03" W	59.99'	4°58'47"	30.02
C176	740.00'	57.94'	N 40°48'02" W	57.93'	4°29'11"	28.99
C177	971.00'	44.03'	N 16°07'09" W	44.02'	2°35'52"	22.02
C178	12.00'	18.08'	S 38°47'09" W	16.42'	86°19'08"	11.25
C179	580.00'	33.53'	N 02°43'04" W	33.52'	318°43"	16.77
C180	12.00'	20.59'	S 34°20'45" W	18.16'	98°19'56"	13.89
C181	12.00'	19.99'	N 48°46'30" W	17.75'	95°25'34"	13.19
C182	1230.00'	45.31'	N 00°00'24" W	45.31'	206°38"	22.66
C183	12.00'	18.80'	N 41°05'01" W	15.46'	80°33'51"	10.11
C184	220.00'	193.88'	S 55°57'09" E	187.67'	50°29'35"	103.74
C185	160.00'	81.75'	N 39°41'08" E	80.87'	29°16'33"	41.79
C186	300.00'	221.37'	N 07°15'59" E	216.38'	42°16'45"	116.00
C187	740.00'	56.64'	N 18°29'34" W	56.63'	4°23'09"	28.34
C188	740.00'	31.34'	N 15°05'12" W	31.34'	2°25'37"	15.67
C189	1050.00'	32.10'	N 13°56'40" W	32.10'	145°07"	16.05
C190	1050.00'	55.86'	N 11°32'40" W	55.86'	3°02'54"	27.94
C191	1050.00'	57.11'	N 08°27'44" W	57.10'	3°06'59"	28.56
C192	1050.00'	56.98'	N 05°20'58" W	56.97'	3°06'33"	28.50
C193	1050.00'	67.21'	N 01°57'39" W	67.20'	340°04"	33.62
C194	1170.82'	29.15'	N 14°06'28" W	29.15'	1°25'35"	14.58
C195	1170.82'	65.78'	N 11°47'08" W	65.77'	313°08"	32.90
C196	1170.82'	62.23'	N 08°39'11" W	62.22'	3°02'33"	31.12
C197	1176.26'	63.42'	N 05°30'10" W	63.41'	3°05'21"	31.72
C198	1176.26'	88.38'	N 01°48'21" W	88.36'	41°81'8"	44.21
C199	1176.26'	20.00'	N 00°50'02" E	20.00'	0°58'27"	10.00
C200	12.00'	20.28'	N 50°23'07" E	17.95'	96°49'54"	13.52
C201	180.00'	10.27'	S 79°33'54" E	10.27'	316°05"	5.13
C202	180.00'	79.49'	S 65°16'44" E	78.85'	29°16'14"	40.41
C203	180.00'	68.22'	S 41°46'11" E	67.81'	21°42'53"	34.52
C204	180.00'	0.65'	S 30°48'33" E	0.65'	01°22'31"	0.32
C205	15.00'	22.30'	S 11°53'36" W	20.31'	85°11'55"	13.79
C206	200.00'	77.72'	N 43°21'38" E	77.23'	221°5'50"	39.35
C207	200.00'	20.03'	N 29°21'32" E	20.03'	5°44'21"	10.03
C208	210.00'	49.60'	S 64°32'16" E	49.48'	13°31'58"	24.92
C209	210.00'	55.87'	S 78°55'31" E	55.70'	15°14'33"	28.10
C210	210.00'	7.74'	S 87°56'11" E	7.74'	2°04'47"	3.87
C211	190.00'	63.47'	S 79°05'26" E	63.17'	19°08'18"	32.03
C212	1189.31'	138.75'	N 02°16'49" E	138.67'	6°41'03"	69.45
C213	5.00'	15.05'	S 88°09'04" E	9.98'	172°27'07"	75.80
C214	1212.00'	272.78'	N 08°22'22" W	272.20'	12°53'43"	136.97
C263	190.00'	38.96'	S 63°38'47" E	38.90'	11°44'59"	19.55

LEGEND

- EXISTING IRON PIPE
- IRON PIPE SET
- ▲ CALCULATED POINT
- SDE STORM DRAIN EASEMENT
- VAR. PUBLIC SDE VARIABLE WIDTH PUBLIC STORM DRAIN EASEMENT
- PRIVATE A&U PRIVATE ACCESS AND UTILITY EASEMENT

GENERAL NOTES

1. SEE SHEET 1 OF 6 FOR GENERAL NOTES AND CERTIFICATES.
2. SEE SHEET 2 OF 6 FOR PUBLIC 10'x4' WATER EASEMENT DETAIL.
3. 4' PRIVATE HOA EASEMENT OFFSET AND PARALLEL TO R/W.
- 8' PRIVATE UTILITY EASEMENT OFFSET AND PARALLEL TO R/W.
- SEE SHEET 2 OF 6 FOR PRIVATE EASEMENT DETAIL.



REVISIONS:

SURVEY FOR:
NEWLAND COMMUNITIES
6860 FAYETTEVILLE ROAD
SUITE 201
DURHAM, NORTH CAROLINA 27713

**BRIAR CHAPEL
PHASE 4 SECTION 2
SUBDIVISION, EASEMENT DEDICATION
& RIGHT-OF-WAY DEDICATION PLAT**

PROJECT NO: NEW-05000
FILENAME: NEW-05000-F14
SURVEYOR: JNG
DRAWN BY: EMM
SCALE: 1"=50'
DATE: 08/08/2007
SHEET NO: 5-6

