

I HEREBY CERTIFY THAT THIS PLAT IS OF THE FOLLOWING TYPE:
G.S. 47-30 (f)(1)(g). THIS SURVEY CREATES SUBDIVISION OF
LAND WITHIN THE AREA OF A COUNTY OR MUNICIPALITY THAT
HAS AN ORDINANCE THAT REGULATES PARCELS OF LAND.

JOSEPH N. GRADY, JR. PLS L-4163

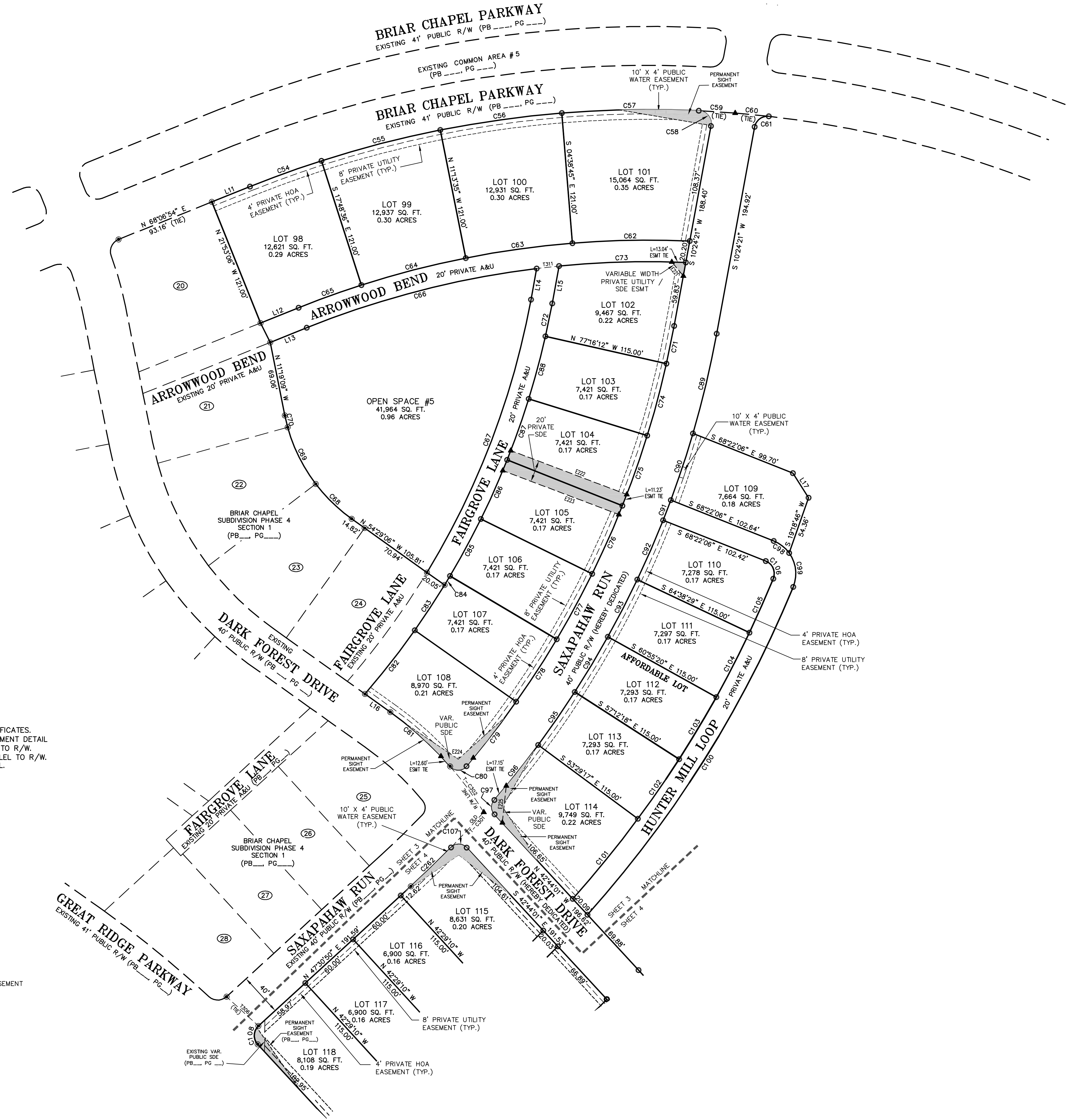
**THE JOHN R. McADAMS
COMPANY, INC.**
ENGINEERS/PLANNERS/SURVEYORS
RESEARCH TRIANGLE PARK, NC
P.O. BOX 14005 ZIP 27709-4005
(919) 361-5000

REVISIONS:

NEWLAND COMMUNITIES
6860 FAYETTEVILLE ROAD
SUITE 201
DURHAM, NORTH CAROLINA 27713

**BRIAR CHAPEL
PHASE 4 SECTION 2**
SUBDIVISION, EASEMENT DEDICATION
& RIGHT-OF-WAY DEDICATION PLAT

PROJECT NO: NEW-05000
FILENAME: NEW-05000-F14
SURVEYOR: JNG
DRAWN BY: EMM
SCALE: 1"=50'
DATE: 08/08/2007
SHEET NO: **3-6**

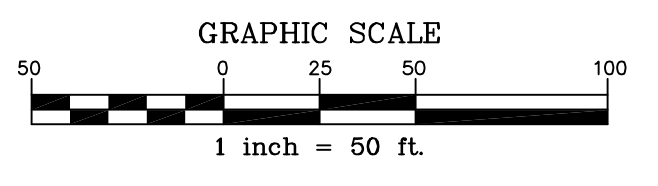


GENERAL NOTES

- SEE SHEET 1 OF 6 FOR GENERAL NOTES AND CERTIFICATES.
- SEE SHEET 2 OF 6 FOR PUBLIC 10'x4' WATER EASEMENT DETAIL.
- 4' PRIVATE HOA EASEMENT OFFSET AND PARALLEL TO R/W.
- 8' PRIVATE UTILITY EASEMENT OFFSET AND PARALLEL TO R/W. SEE SHEET 2 OF 6 FOR PRIVATE EASEMENT DETAIL.

LEGEND

- EXISTING IRON PIPE
- IRON PIPE SET
- ▲ CALCULATED POINT
- SDE
- VAR. PUBLIC SDE
- PRIVATE A&U
- STORM DRAIN EASEMENT
- VARIABLE WIDTH PUBLIC STORM DRAIN EASEMENT
- PRIVATE ACCESS AND UTILITY EASEMENT



EASEMENT LINE TABLE		LINE TABLE	
LINE	BEARING	LINE	BEARING
E221	16.83' N 39°36'12" W	L11	38.13' N 68°06'54" W
E222	115.00' S 69°15'58" E	L12	38.13' N 68°06'54" E
E223	115.05' S 69°15'58" E	L13	36.45' N 68°06'54" E
E224	30.07' S 87°01'28" E	L14	29.31' N 10°24'21" E
E225	34.38' N 06°01'20" E	L15	35.31' S 10°24'21" W
		L16	28.78' S 54°29'06" E
		L17	27.01' S 32°37'51" E

TIE LINE TABLE		
LINE	LENGTH	BEARING
T306	40.15'	N 47°29'57" W
T311	20.88'	N 83°42'12" E

THE CURVE TABLE					
CURVE	RADIUS	LENGTH	CHORD BEARING	CHORD DISTANCE	TANGENT
T-C301	920.00'	44.62'	N 42°53'40" E	44.62'	2°46'45"
T-C302	320.00'	52.80'	N 36°19'08" W	52.74'	9°27'12"

CURVE TABLE					
CURVE	RADIUS	LENGTH	CHORD BEARING	CHORD DISTANCE	TANGENT
C54	991.16'	70.48'	S 70°09'15" W	70.47'	4°04'28"
C55	991.16'	113.87'	S 75°28'57" W	113.81'	6°34'57"
C56	991.16'	113.82'	S 82°03'49" W	113.76'	6°34'47"
C57	991.16'	127.05'	S 89°01'32" W	126.97'	7°20'40"
C58	12.00'	20.46'	N 38°26'53" W	18.07'	97°42'29"
C59	991.16'	33.84'	N 86°19'26" W	33.84'	1°57'23"
C60	991.01'	31.29'	N 84°26'19" W	31.29'	1°48'32"
C61	12.00'	18.02'	S 53°26'09" W	16.38'	86°03'36"
C62	870.00'	108.90'	S 88°56'25" W	108.83'	7°10'19"
C63	870.00'	99.92'	S 82°03'50" W	99.87'	6°34'51"
C64	870.00'	99.97'	S 75°28'54" W	99.91'	6°35'01"
C65	870.00'	61.86'	S 70°09'09" W	61.86'	4°04'30"
C66	850.00'	220.82'	S 75°33'26" W	220.20'	1°45'30°5"
C67	745.00'	272.24'	N 20°52'28" E	270.72'	20°56'13"
C68	155.00'	46.51'	S 45°53'17" E	46.34'	1°17'13"
C69	155.00'	59.00'	S 26°23'09" E	58.65'	21°48'39"
C70	155.00'	11.26'	S 132°59' E	11.25'	4°09'40"
C71	880.00'	35.69'	N 11°34'04" E	35.69'	2°19'26"
C72	765.00'	31.03'	N 11°34'04" E	31.03'	2°19'26"
C73	850.00'	117.68'	S 88°22'24" W	117.58'	7°55'56"
C74	880.00'	69.04'	N 14°58'39" E	69.02'	4°29'42"
C75	880.00'	69.04'	N 19°28'20" E	69.02'	4°29'42"
C76	880.00'	69.04'	N 23°58'02" E	69.02'	4°29'42"
C77	880.00'	69.04'	N 28°27'44" E	69.02'	4°29'42"
C78	880.00'	69.04'	N 32°57'26" E	69.02'	4°29'42"
C79	880.00'	75.48'	N 37°33'43" E	75.46'	4°54'52"
C80	10.00'	17.25'	N 89°32'12" E	15.19'	98°50'07"
C81	320.00'	75.06'	N 47°45'55" W	74.89'	13°26'22"
C82	765.00'	75.04'	N 38°00'54" E	75.01'	5°37'14"
C83	765.00'	50.10'	N 33°19'42" E	50.09'	3°45'09"
C84	765.00'	9.91'	N 31°04'51" E	9.91'	0°44'33"
C85	765.00'	60.02'	N 28°27'44" E	60.00'	4°29'42"
C86	765.00'	60.02'	N 23°58'02" E	60.00'	4°29'42"
C87	765.00'	60.02'	N 19°28'20" E	60.00'	4°29'42"
C88	765.00'	60.02'	N 14°58'39" E	60.00'	4°29'42"
C89	920.00'	95.13'	N 13°22'06" E	95.09'	5°55'29"
C90	920.00'	65.12'	N 18°21'30" E	65.11'	4°03'20"
C91	920.00'	20.00'	N 21°00'32" E	20.00'	1°14'44"
C92	920.00'	59.84'	N 23°29'43" E	59.83'	3°43'37"
C93	920.00'	59.72'	N 27°13'08" E	59.71'	3°43'09"
C94	920.00'	59.69'	N 30°56'11" E	59.68'	3°43'02"
C95	920.00'	59.69'	N 34°39'12" E	59.68'	3°43'02"
C96	920.00'	65.22'	N 38°32'34" E	65.20'	4°03'41"
C97	10.00'	14.54'	S 01°04'48" E	13.29'	83°18'25"
C98	32.50'	18.44'	N 52°06'38" W	18.20'	32°30'55"
C99	32.50'	33.00'	N 06°45'33" W	31.60'	58°11'06"
C100	1055.00'	360.59'	N 32°07'26" E	358.84'	19°34'59"
C101	1035.00'	95.73'	N 39°09'42" E	95.70'	5°17'58"
C102	1035.00'	67.15'	N 34°39'12" E	67.14'	3°43'02"
C103	1035.00'	67.15'	N 30°56'11" E	67.14'	3°43'02"
C104	1035.00'	67.18'	N 27°13'05" E	67.17'	3°43'09"
C105	1035.00'	54.67'	N 23°59'43" E	54.66'	3°01'35"
C106	12.00'	19.79'	N 23°01'09" W	17.79'	90°42'04"
C107	10.00'	16.23'	N 89°13'29" W	14.51'	92°58'57"
C108	12.00'	18.90'	S 02°23'25" W	17.01'	90°14'51"

NC GRID (NAD 83)