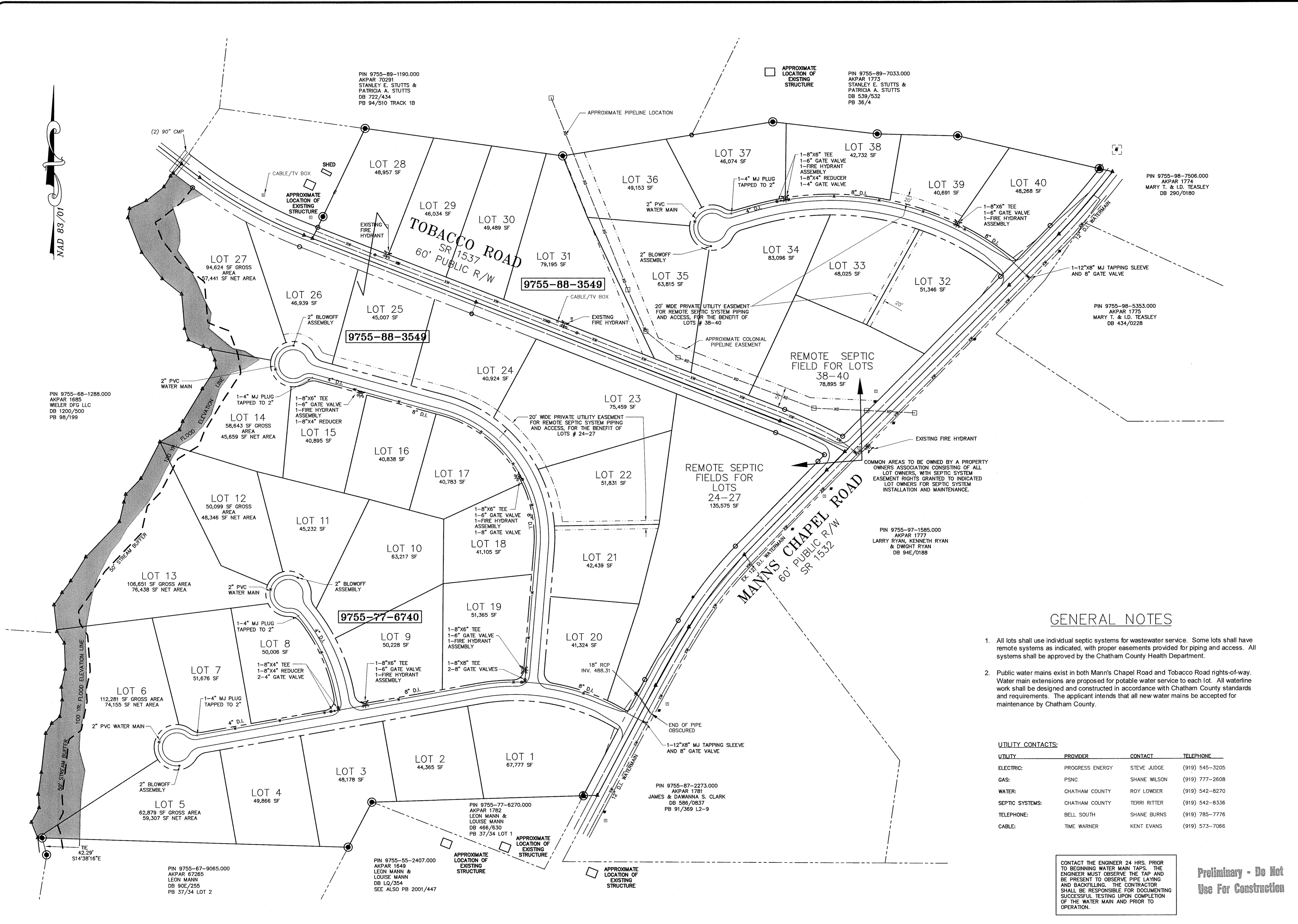


NAD 83/01



GENERAL NOTES

- All lots shall use individual septic systems for wastewater service. Some lots shall have remote systems as indicated, with proper easements provided for piping and access. All systems shall be approved by the Chatham County Health Department.
- Public water mains exist in both Mann's Chapel Road and Tobacco Road rights-of-way. Water main extensions are proposed for potable water service to each lot. All waterline work shall be designed and constructed in accordance with Chatham County standards and requirements. The applicant intends that all new water mains be accepted for maintenance by Chatham County.

UTILITY CONTACTS:

UTILITY	PROVIDER	CONTACT	TELEPHONE
ELECTRIC:	PROGRESS ENERGY	STEVE JUDGE	(919) 545-3205
GAS:	PSNC	SHANE WILSON	(919) 777-2608
WATER:	CHATHAM COUNTY	ROY LOWDER	(919) 542-8270
SEPTIC SYSTEMS:	CHATHAM COUNTY	TERRI RITTER	(919) 542-8336
TELEPHONE:	BELL SOUTH	SHANE BURNS	(919) 785-7776
CABLE:	TIME WARNER	KENT EVANS	(919) 573-7066

CONTACT THE ENGINEER 24 HRS. PRIOR TO BEGINNING WATER MAIN TAPS. THE ENGINEER MUST OBSERVE THE TAP AND BE PRESENT TO OBSERVE PIPE LAYING AND BACKFILLING. THE CONTRACTOR SHALL BE RESPONSIBLE FOR DOCUMENTING SUCCESSFUL TESTING UPON COMPLETION OF THE WATER MAIN AND PRIOR TO OPERATION.

Preliminary - Do Not Use For Construction

CIVIL CONSULTANTS INC.
 Land Development Consultants
 Civil Engineers
 3708 Lockan Parkway Suite 201 Durham, NC 27707
 PH: (919) 490-1645 Fax: (919) 403-0336 www.civil-consultants.com

MANN'S CROSSING
 CHATHAM COUNTY NORTH CAROLINA
 UTILITY PLAN

REV.	DATE	DESCRIPTION	BY
1.	8/9/06	PER COUNTY COMMENTS	KGF

DATE: JULY 12, 2006
 HORIZONTAL SCALE: 1"=100'
 VERTICAL SCALE: 1"=4'
 PROJECT MANAGER: TMW
 DRAWN BY: KGF
 PROJECT NO.: 13009
 DRAWING NAME: 13009-PRELIM.DWG

THIS DRAWING AND THE DESIGN HEREON ARE THE PROPERTY OF CIVIL CONSULTANTS, INC. THE INFORMATION ON THIS DRAWING IS NOT TO BE USED ON ANY OTHER SITE OR PROJECT. THE REPRODUCTION OR OTHER USE OF THIS DRAWING IN WHOLE OR IN PART, WITHOUT WRITTEN CONSENT OF CIVIL CONSULTANTS, INC. IS PROHIBITED.
 COPYRIGHT 2006 CIVIL CONSULTANTS, INC.

SHEET NO. C2

SKETCH