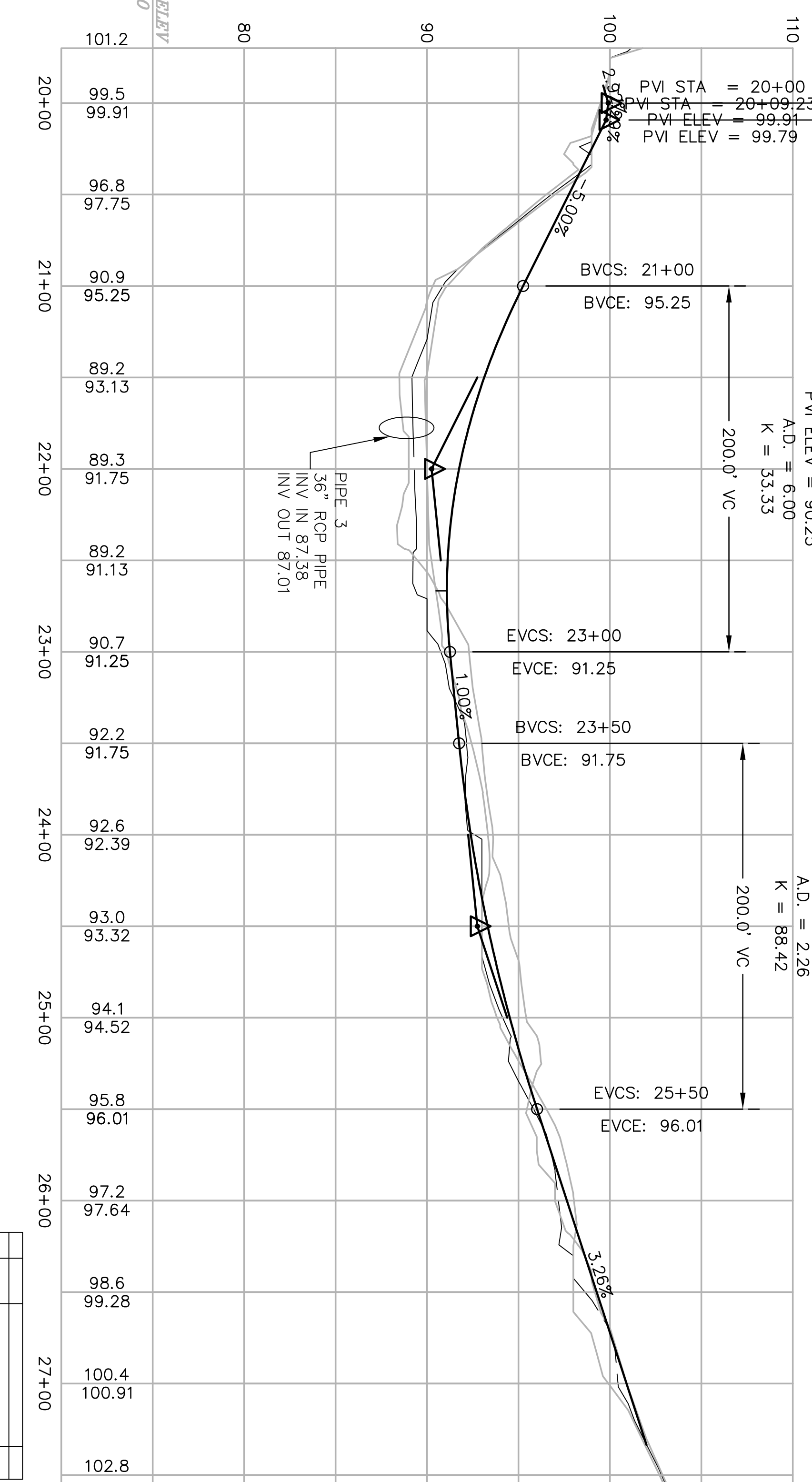
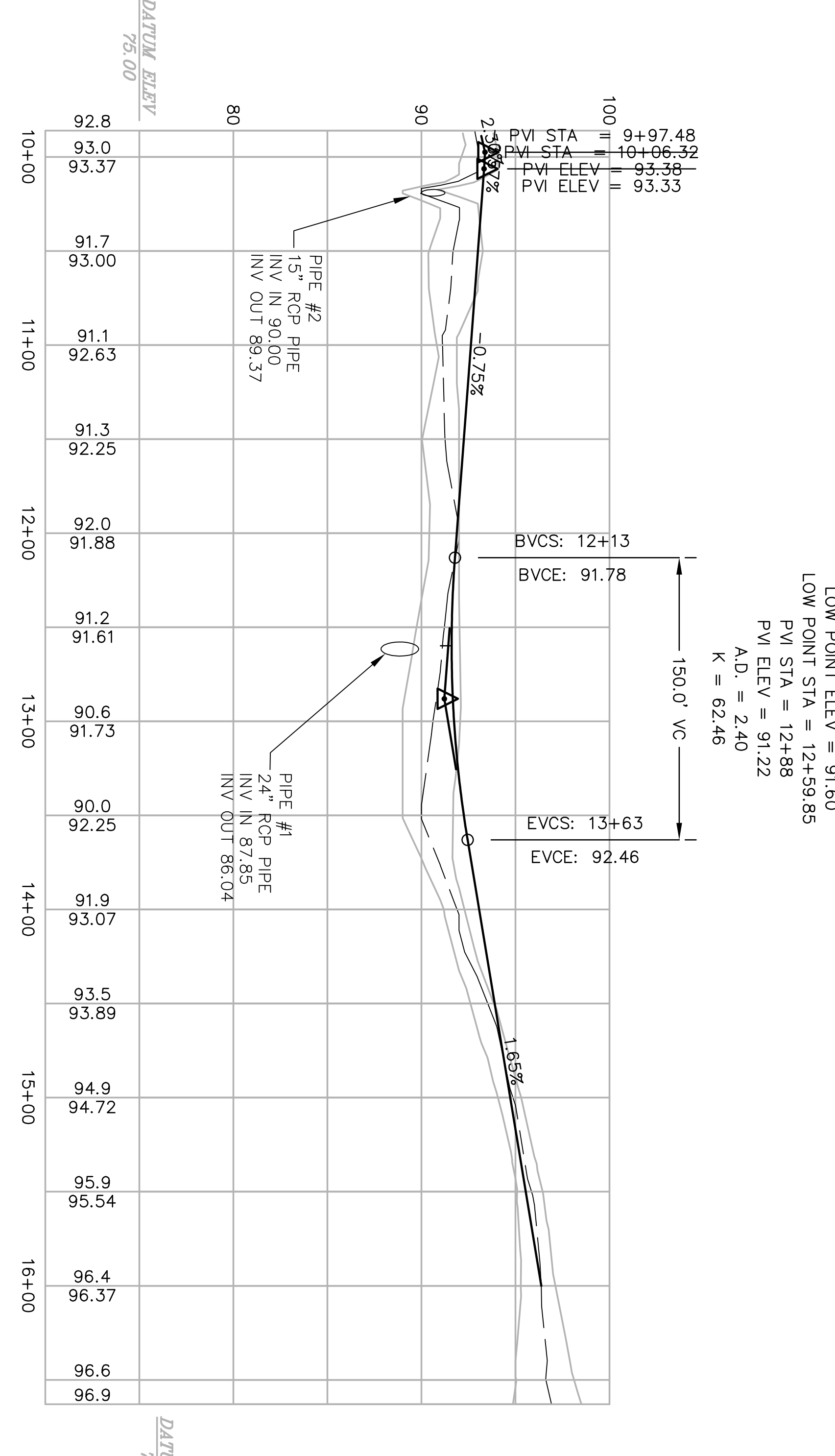


CH	SLOPE	Q10	V10	V ALLOW	Q2	N	I	I ALLOW	TEMP LINING
1	.031	8.35	3.014	6.04	10.5	24.05	0.31	1.99	C-350
2	.019	12.14	4.383	6.15	10.5	34.96	.026	1.47	C-350
3	.031	2.50	12.64	4.72	10.5	10.08	.034	1.54	C-350
4	.019	3.14	11.34	3.83	4.0	9.04	.030	.94	GRASS
5	.075	.04	.26	2.49	4.0	.21	.030	.70	GRASS
6	.069	3.31	11.94	5.48	10.5	9.52	.036	2.91	C-350
7	.017	6.82	24.64	4.69	10.5	19.66	.028	1.00	C-350
8	.017	.51	3.51	2.67	4.0	2.64	.030	.39	GRASS
9	.0075	5.62	20.28	3.12	4.0	16.18	.030	.39	GRASS
10	.0075	.12	.78	1.37	4.0	.62	.030	.16	STRAW WITH NET
11	.0275	13.07	49.01	7.32	10.5	39.10	.025	2.10	C-350

PIPE	AREA	Q	Q10	SLOPE	DIA	V10	DISSSIPATOR
1	12.44ac	7.22	.5	44.92	24"	16.41	16'L X 8.4'W 13" CLASS B STONE 22" THICK
2	.50	7.22	.5	1.81	15"	4.515	5'L X 3.3'W 3" CLASS A STONE 9" THICK
3	12.45ac	7.22	.5	55.77	36"	9.31	18'L X 10.5'W 6" CLASS B STONE 22" THICK



NO.	DATE	REVISION DESCRIPTION	BY

DRAWING No.

C4

FILE NAME: D:\PHASE3\BASE

JOB NUMBER: 05037

ISSUE DATE: 5/22/06

Plan and Profile

The Cottages at Stonegate- Phase 3

Pitman and Associates
Baldwin Township, Chatham County, North Carolina

Crowley & Associates, Inc.
Professional Engineers
1906 South Main Street, Suite 122
Wake Forest, North Carolina 27587
919-562-8860