

VICINITY MAP  
NOT TO SCALE

**DEVELOPER:**

CRESCENT RESOURCES, LLC  
8450 Falls of Neuse Road, Suite 102  
Raleigh, NC 27615

**CONSULTANTS:**

Attorney: Bradshaw & Robinson, LLP  
 Land Planner/Civil Engineer: CE Group, Inc.  
 Ecologist/Soils Evaluation: Soil & Environmental Consultants  
 Environmental: Audubon International  
 Land Surveyor: Phillip Post & Associates, Inc.  
 Traffic Engineer: Ramey Kemp & Associates, Inc.  
 Wastewater Evaluation: TCW Wastewater  
 Economic Analysis: Miley Gallo & Associates

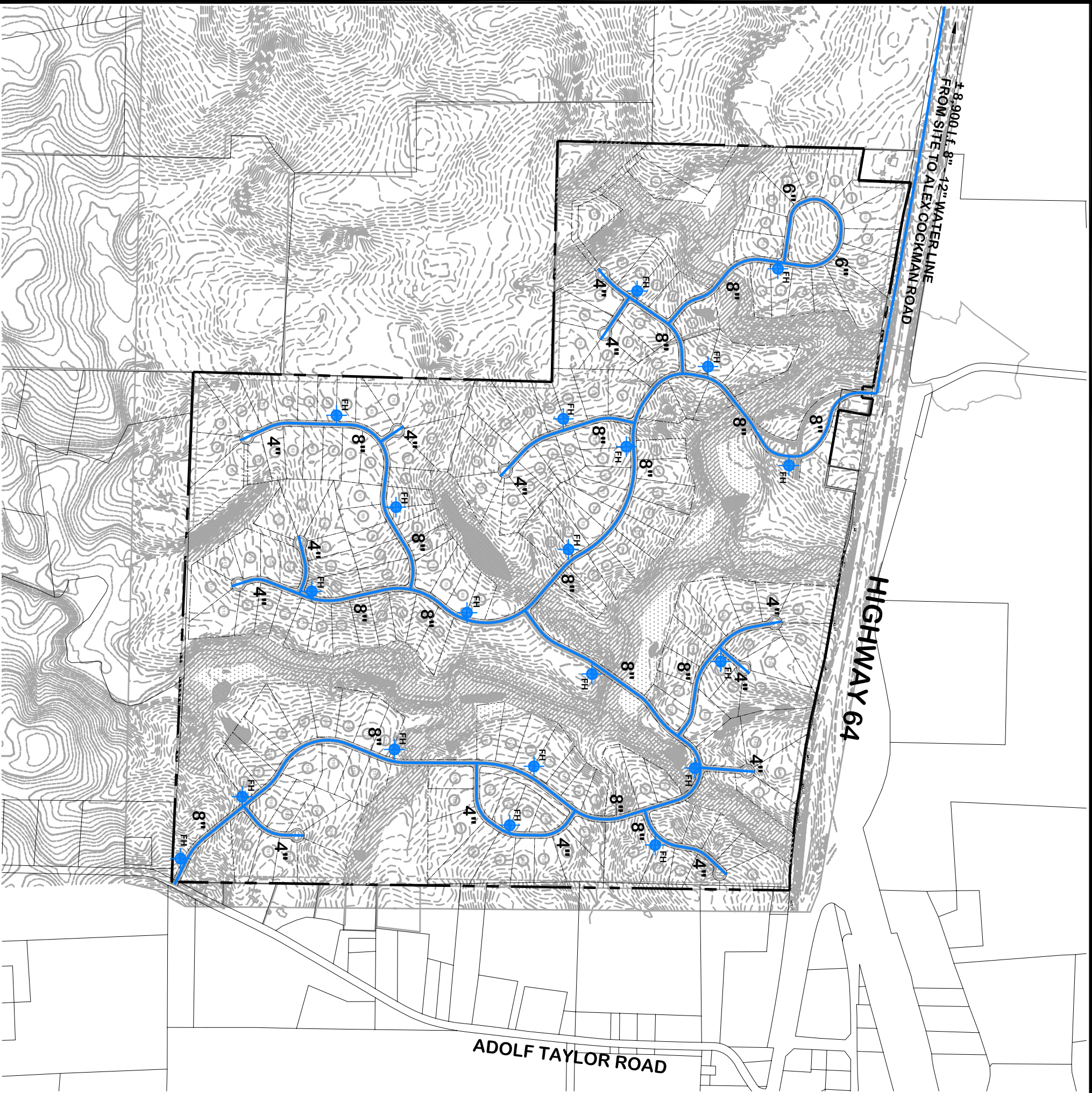
**LEGEND**



**OVERALL SITE DATA**

TOTAL SITE AREA:	± 556.59 Acres
RESIDENTIAL LOT AREA: (197 RESIDENTIAL LOTS)	± 335.57 Acres
STREET RIGHT OF WAY: (± 29,200 I.F. - 50' PRIVATE R/W)	± 33.79 Acres
TOTAL OPEN SPACE:	± 166.63 Acres
CENTRAL AMENITY AREA:	± 10.30 Acres
FINE LIVING CENTER:	± 10.30 Acres

NOTE: THE FEATURES DESCRIBED AND DEPICTED HEREIN ARE BASED ON CURRENT DEVELOPMENT PLANS. ACTUAL DEVELOPMENT MAY BE SUBJECT TO CHANGE BASED UPON FURTHER COUNTY REVIEW.



**CE Group, inc.**  
 LAND PLANNING  
 CIVIL ENGINEERING  
 CONSTRUCTION MANAGEMENT  
 11000 Regency Parkway, Suite 410, Cary, N.C. 27511  
 Voice (919) 367-8790 Fax (919) 367-8791

**BELMEADE**  
 PLANNED RESIDENTIAL COMMUNITY  
 Pittsboro, North Carolina  
**UTILITY PLAN - ON-SITE WATER**

0 400 800'  
 SCALE: 1" = 800'  
 Date: August 14, 2006

NORTH

EXHIBIT  
 MAP