

VICINITY MAP
NOT TO SCALE

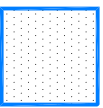
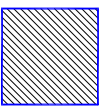

DEVELOPER:

CRESCENT RESOURCES, LLC
8450 Falls of Neuse Road, Suite 102
Raleigh, NC 27615

CONSULTANTS:

Bradshaw & Robinson, LLP
CE Group, Inc.
Soil & Environmental Consultants
Audubon International
Phillip Post & Associates, Inc.
Ramey Kemp & Associates, Inc.
TCW Wastewater
Miley Gallo & Associates

LEGEND

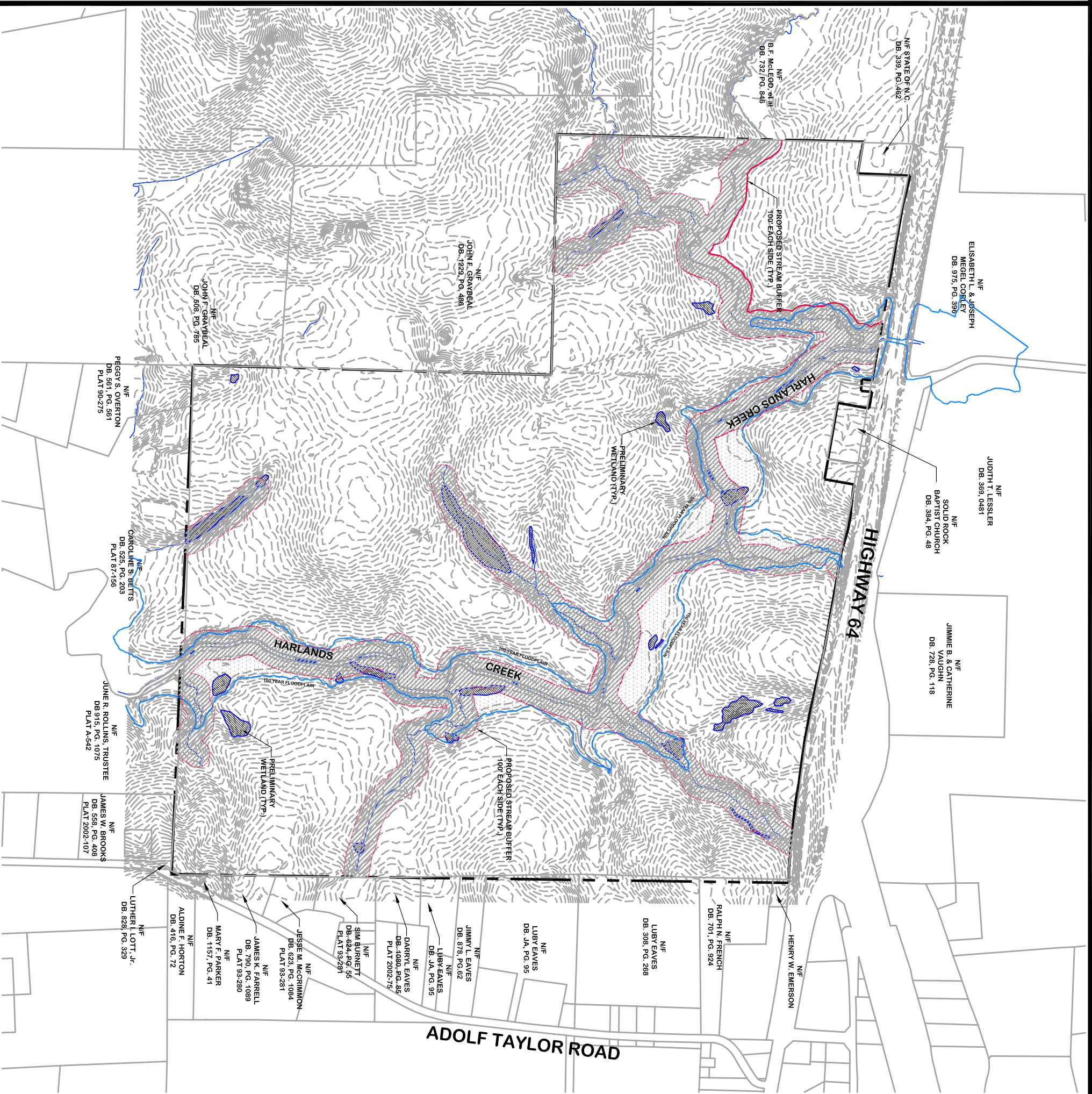
-  100 Year Floodplain
FEMA FIRM Map Nos.
37109721001, 37109731001
and 37109722001 dated July 13, 2005
-  Preliminary Wetlands
(Subject to Field Review by USACE)
-  Stream Buffer
(100' Each Side of Stream)

NOTE: Preliminary Wetlands and Stream Buffers based on Field Report prepared by Soil & Environmental Consultants, PA.

OVERALL SITE DATA

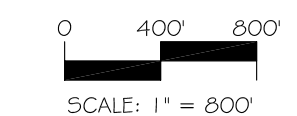
TOTAL SITE AREA:	± 556.59 Acres
RESIDENTIAL LOT AREA: (197 RESIDENTIAL LOTS)	± 335.57 Acres
STREET RIGHT OF WAY: (± 29,200 I.F. - 50' PRIVATE RW)	± 33.79 Acres
TOTAL OPEN SPACE:	± 166.63 Acres
CENTRAL AMENITY AREA:	± 10.30 Acres
FINE LIVING CENTER:	± 10.30 Acres

NOTE: THE FEATURES DESCRIBED AND DEPICTED HEREIN ARE BASED ON CURRENT DEVELOPMENT PLANS. ACTUAL DEVELOPMENT MAY BE SUBJECT TO CHANGE BASED UPON FURTHER COUNTY REVIEW.



HIGHWAY 64

ADOLF TAYLOR ROAD



Date: August 14, 2006

BELMEADE
PLANNED RESIDENTIAL COMMUNITY
Pittsboro, North Carolina
EXISTING SITE HYDROLOGY

CE Group, inc.
LAND PLANNING
CIVIL ENGINEERING
CONSTRUCTION MANAGEMENT
11000 Regency Parkway, Suite 410, Cary, N.C. 27511
Voice (919) 367-8790 Fax (919) 367-8791

NORTH

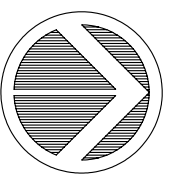


EXHIBIT
MAP