

VICINITY MAP
NOT TO SCALE

DEVELOPER:

CRESCENT RESOURCES, LLC
8450 Falls of Neuse Road, Suite 102
Raleigh, NC 27615

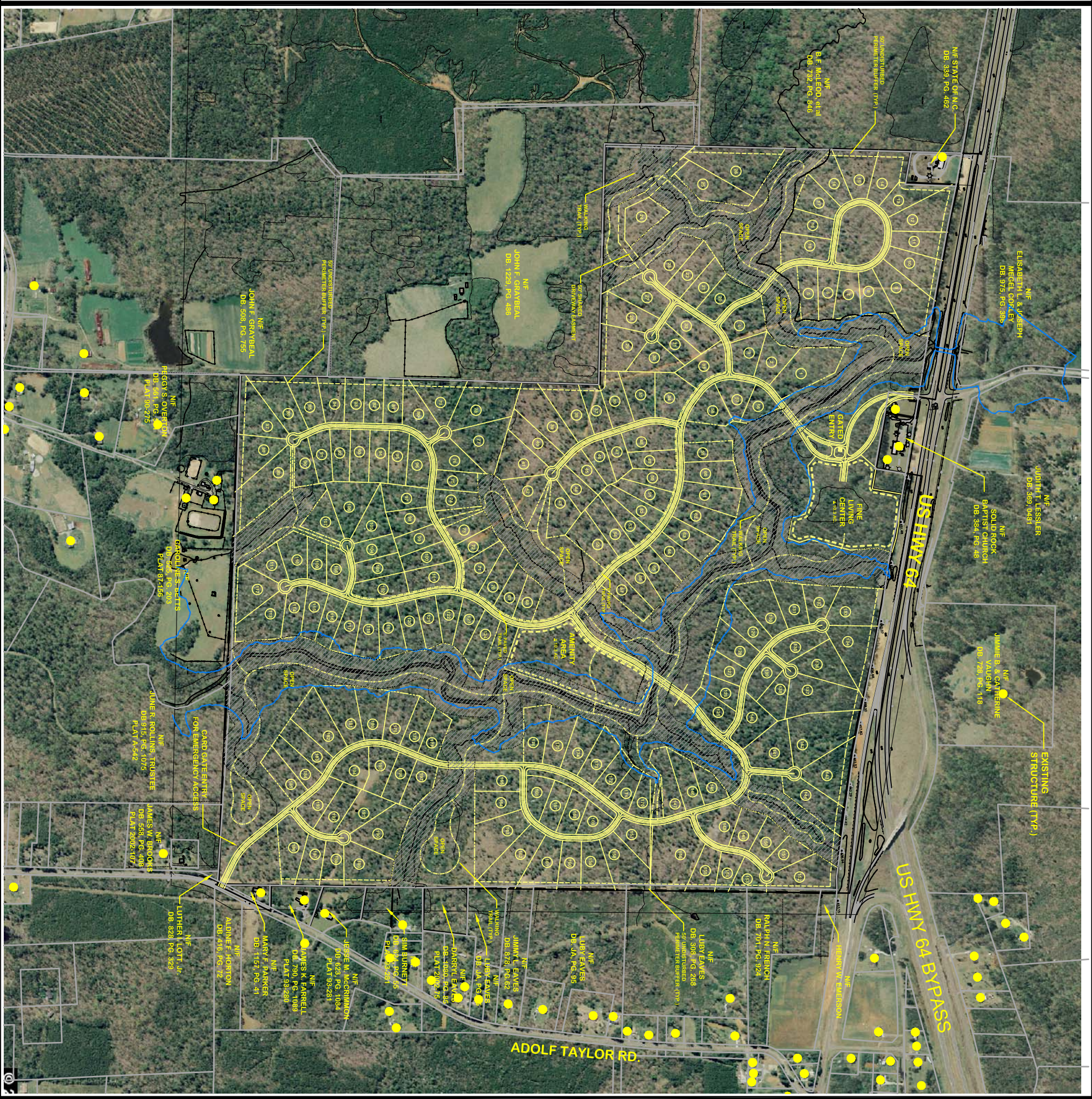
CONSULTANTS:

Attorney: Bradshaw & Robinson, LLP
Land Planner/Civil Engineer: CE Group, Inc.
Ecologist/Soils Evaluation: Soil & Environmental Consultants
Environmental: Audubon International
Land Surveyor: Phillip Post & Associates, Inc.
Traffic Engineer: Ramey Kemp & Associates, Inc.
Wastewater Evaluation: TCW Wastewater
Economic Analysis: Miley Gallo & Associates

OVERALL SITE DATA

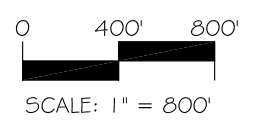
TOTAL SITE AREA:	± 556.59 Acres
RESIDENTIAL LOT AREA: (197 RESIDENTIAL LOTS)	± 335.57 Acres
STREET RIGHT OF WAY: (± 29,200 I.F. - 50' PRIVATE R/W)	± 33.79 Acres
TOTAL OPEN SPACE:	± 166.63 Acres
CENTRAL AMENITY AREA:	± 10.30 Acres
FINE LIVING CENTER:	± 10.30 Acres

NOTE: THE FEATURES DESCRIBED AND DEPICTED HEREIN ARE BASED ON CURRENT DEVELOPMENT PLANS. ACTUAL DEVELOPMENT MAY BE SUBJECT TO CHANGE BASED UPON FURTHER COUNTY REVIEW.



CE Group, inc.
LAND PLANNING
CIVIL ENGINEERING
CONSTRUCTION MANAGEMENT
11000 Regency Parkway, Suite 410, Cary, N.C. 27511
Voice (919) 367-8790 Fax (919) 367-8791

BELMEADE
PLANNED RESIDENTIAL COMMUNITY
Pittsboro, North Carolina
AERIAL PLAN



Date: August 14, 2006

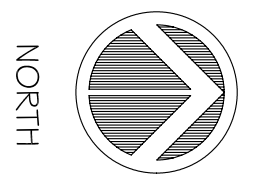


EXHIBIT
MAP