

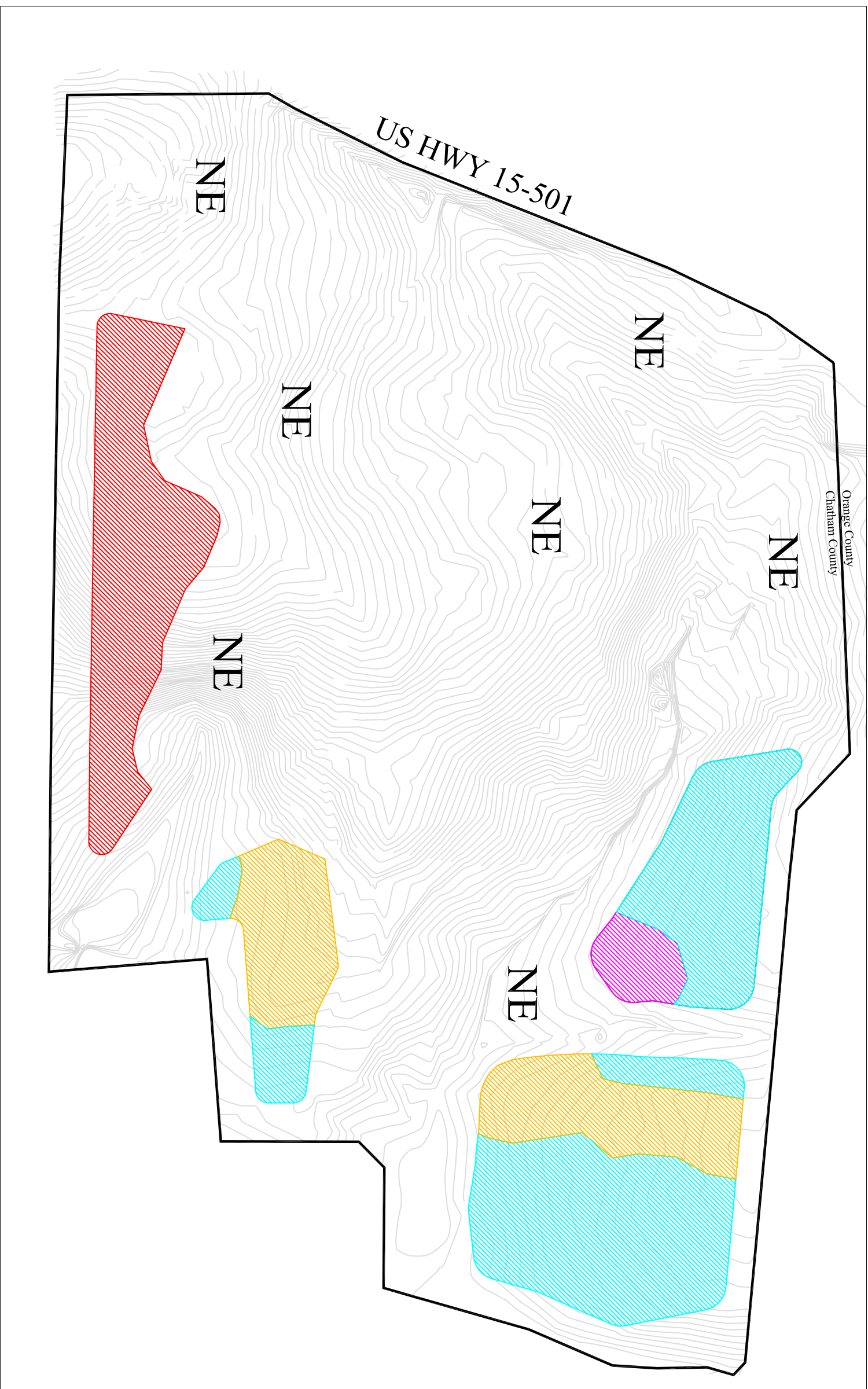
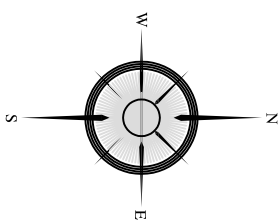


JOB NO.	4-16752
PRODUCED BY	JT
DRAWN BY	JT
FIELD WORK	ES, JT, JD
SCALE	1" = 100'
FILE	ghovovdfiles\4-16774dwgs\soilmapa-31-2006.dwg

*** NOT A SURVEY
*** LINES NOT LOCATED
*** BASE MAP PROVIDED BY CLIENT
*** ACTUAL ALIGNMENT IN FIELD MAY VARY
SLIGHTLY FROM MAP REPRESENTATION

AREAS REPRESENT DOMINANT SOIL SERIES PRESENT.
OTHER SOIL TYPES MAY EXIST AS INCLUSIONS.

GRAPHIC SCALE
1" = 100'



LEGEND

-  WEDOWEE -- BOULDERY
Very deep, well drained, moderately permeable, kaolinitic clays.
A horizon - 6 to 12 inches, sandy loam.
SHWT: greater than 60 inches.
Depth to Cr: >80 inches.
-  LOUISBURG -- BOULDERY
Very deep, well drained, moderately to rapidly permeable.
A horizon - 6 to 12 inches, sandy loam.
SHWT: greater than 60 inches.
Depth to Cr: >60 inches.
-  SANTUC -- BOULDERY
Very deep, moderately well drained, moderately slowly permeable.
A horizon - 6 to 18 inches, sandy loam.
SHWT: 30 to 60 inches.
Depth to Cr: >60 inches.
-  HELENA -- BOULDERY
Very deep, moderately well drained, slowly permeable, mixed clay mineralogy.
A horizon - 6 to 18 inches, sandy loam.
SHWT: 12 to 30 inches.
Depth to Cr: >60 inches.

SHWT = Seasonally High Water Table
Cr = Weathered Bedrock

 NE

Areas without hatch not evaluated.

See S&EC Report.