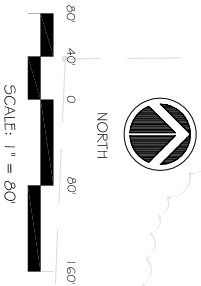
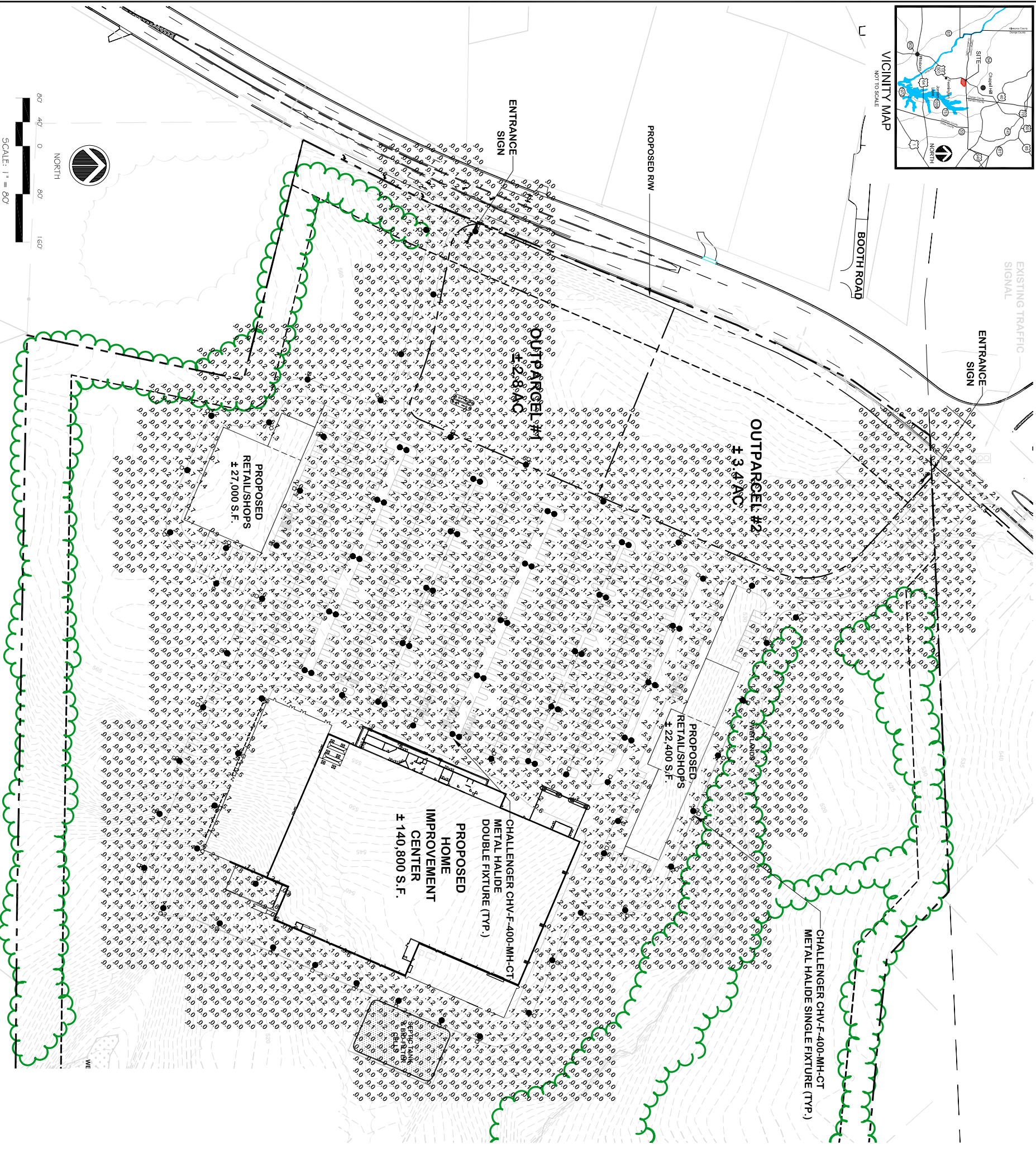


VICINITY MAP
NOT TO SCALE



EXISTING TRAFFIC SIGNAL

ENTRANCE SIGN

BOOTH ROAD

PROPOSED RM

ENTRANCE SIGN

OUTPARCEL #1
2,280 S.F.

OUTPARCEL #2
3,400 S.F.

PROPOSED RETAILSHOPS
27,000 S.F.

PROPOSED RETAILSHOPS
22,400 S.F.

PROPOSED HOME IMPROVEMENT CENTER
140,800 S.F.

CHALLENGER CHV-F-400-MH-CT METAL HALIDE SINGLE FIXTURE (TYP.)

NOTES:

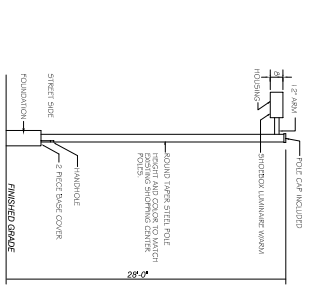
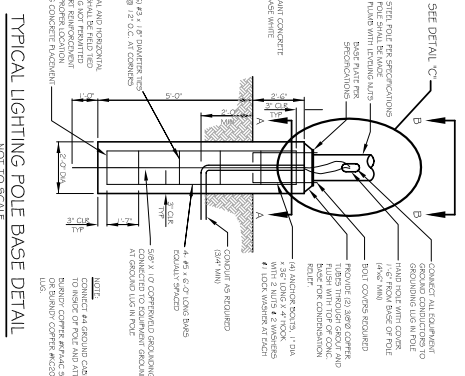
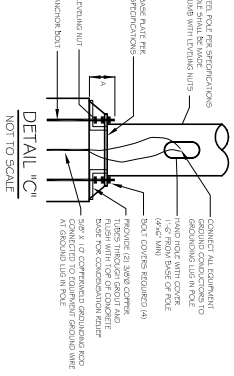
1. THE CE GROUP, INC. IS NOT RESPONSIBLE FOR SAFETY AND SECURITY RISKS DUE TO INADEQUATE LIGHT LEVELS.
2. MAINTAINED FOOTCANDLES AT GRADE USING A 0.72 LIGHT LOSS FACTOR.
3. EXTERIOR LIGHTS ASSOCIATED WITH THE BUILDING ARE TBD. THESE LIGHTS WILL BE CONSISTENT WITH THE CHATHAM COUNTY DRAFT LIGHTING ORDINANCE.

YARD LIGHTS:

- 23 - CHALLENGER CHV-F-400-MH-CT METAL HALIDE (DOUBLE)
- 57 - CHALLENGER CHV-F-400-MH-CT METAL HALIDE (SINGLE)

LIGHTING DATA:
PARKING AREA STATISTICS

AM = 4.0 fc
MIN = 0.56 fc
AVG = 2.25 fc
MAX = 9.7 fc

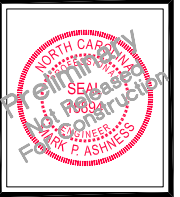


SHROEDX LUMINAIRES AND ROUND POLES

- NOTES:
1. Pole mounting and luminaire details are shown for reference only. All details shall be as shown on the drawings.
 2. Pole mounting and luminaire details are shown for reference only. All details shall be as shown on the drawings.
 3. Pole mounting and luminaire details are shown for reference only. All details shall be as shown on the drawings.
 4. Pole mounting and luminaire details are shown for reference only. All details shall be as shown on the drawings.
 5. Pole mounting and luminaire details are shown for reference only. All details shall be as shown on the drawings.
 6. Pole mounting and luminaire details are shown for reference only. All details shall be as shown on the drawings.

NO.	REVISIONS	DATE

CE Group, inc.
LAND PLANNING
CIVIL ENGINEERING
CONSTRUCTION MANAGEMENT
11000 Regency Parkway, Suite 410, Cary, N.C. 27511
Voice (919) 367-8730 Fax (919) 367-8791



COUNTY LINE PLAZA
HIGHWAY 15-501
CONCEPTUAL LIGHTING PLAN
CHATHAM COUNTY, NC

Date: AUGUST 21, 2006
Scale: 1" = 100'
Drawn: JMW/
Checked: MPA
Project No.: 100-06
Computer Draw Name: 100-06_Master_Plan
Sheet No.: 4
Of 6