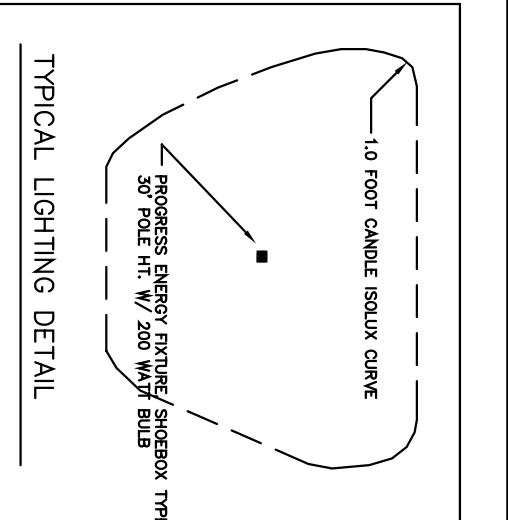
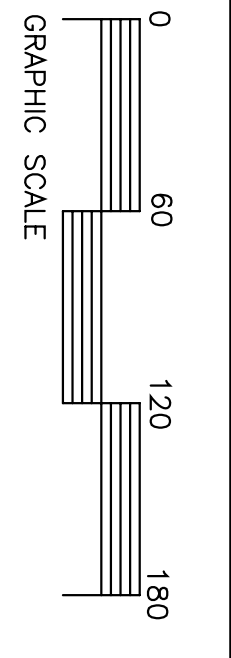
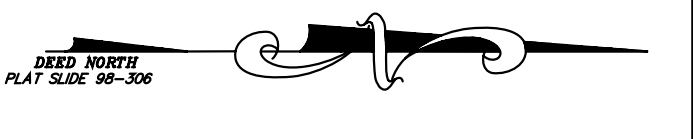
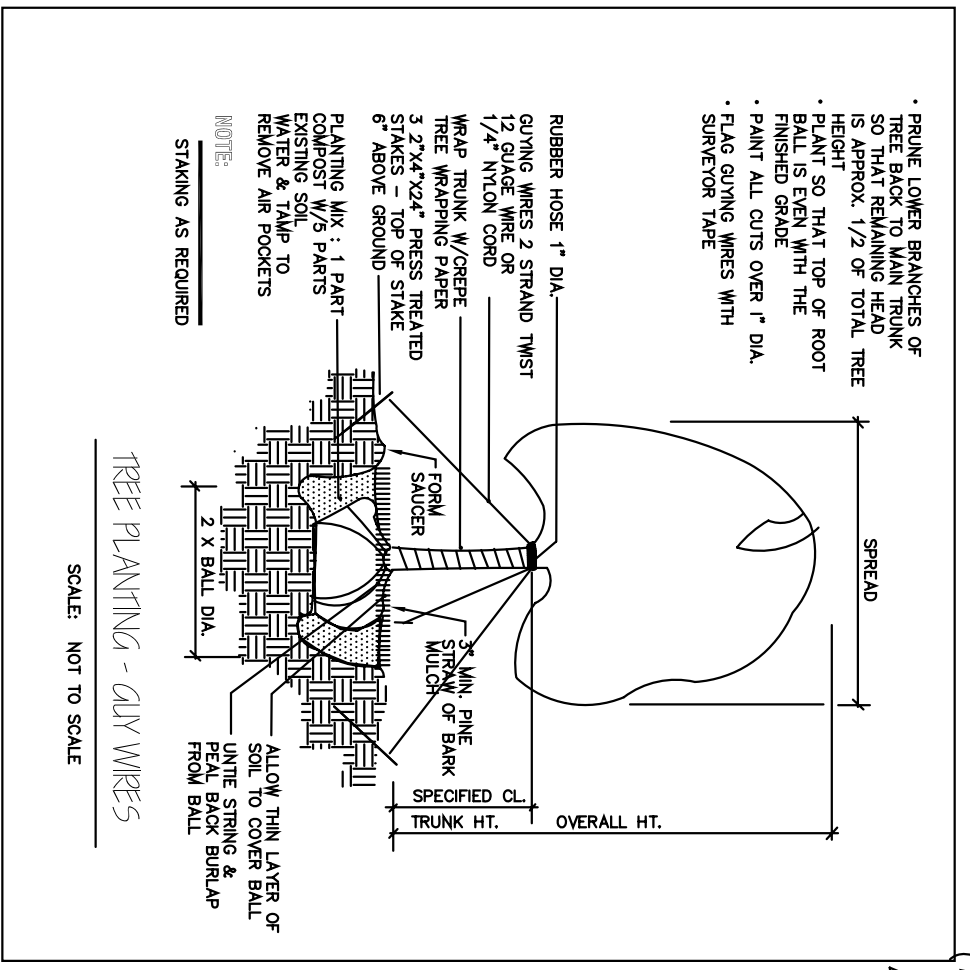
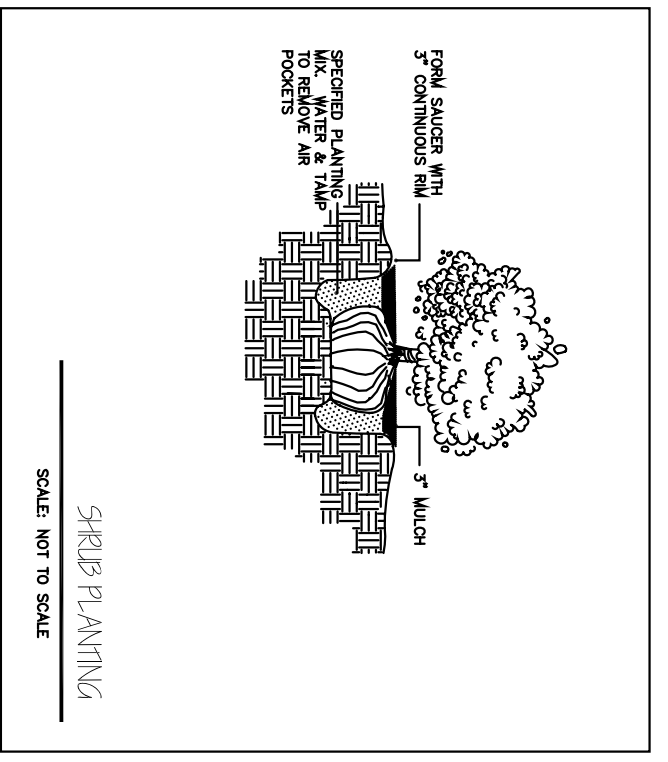


- LEGEND**
- EIP - Existing Iron Pipe
  - IPS - Iron Pipe Set
  - ECM - Existing Concrete Monument
  - CMS - Concrete Monument Set
  - P-K - Parker-Kalon Nail Set
  - NLF - 60D Nail Found
  - NLS - 60D Nail Set
  - ERS - Existing Railroad Spike
  - RNS - Railroad Spike Set
  - MNS - Mathematical Point (Not Set)
  - MNS - 60g Nail Set
  - U - Utility Pole
  - SES - Sanitary Sewer Easement
  - SA - Street Address (Typical)
  - T - Total
  - R/W - Right of Way

**LINE DATA TABLE**

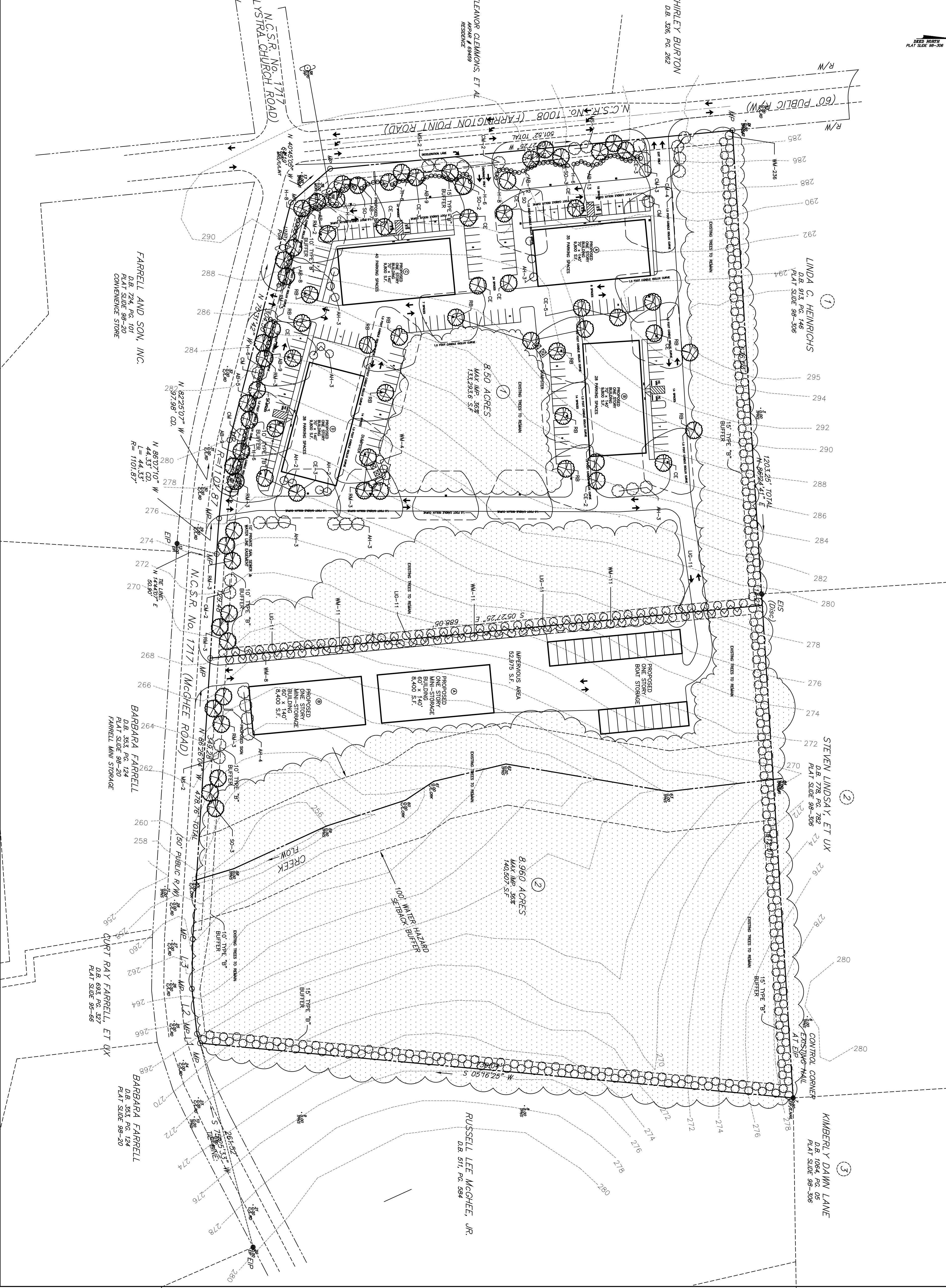
LINE	BEARING	LENGTH
L1	S 71°52'20" W	12.30'
L2	S 83°35'41" W	56.17'
L3	N 89°03'40" W	61.84'



- PLANTING NOTES & SPECIFICATIONS**
- ALL TREES AND SHRUBS HAVE BEEN LOCATED WITH RESPECT TO PROPOSED OR EXISTING FEATURES.
  - VERIFICATION OF TOTAL QUANTITIES AS SHOWN IN THE PLANT LIST SHALL BE THE RESPONSIBILITY OF THE LANDSCAPE ARCHITECT.
  - ALL TREES, SHRUBS AND OTHER PLANTS SHALL CONFORM TO ACCEPTED STANDARDS ESTABLISHED BY THE AMERICAN ASSOCIATION OF NURSERYMEN WHICH ARE ADAPTED TO FOLLOWING PLANTING PRACTICES:
  - PLANTS - "THIN BRANCHES AND FOLIAGE OF DECIDUOUS TREES (NOT ALL END TREES) BY 1/3."
  - ALL PLANTS SHALL BEAT THE SAME RELATIONSHIP TO FINISHED GRADE AS IT BORE TO PREVIOUS FINISHED GRADE. PLANT ALL MATERIALS AND PROPORTIONS WITH 1/3 OF ROOT BALL ABOVE FINISHED GRADE.
  - ALL ROOT BALLS REMOVED FROM CONTAINERS SHALL BE SCARIFIED PRIOR TO BACKFILLING.
  - ALL ABOVE GROUND UTILITY DEVICES TO BE SCARIFIED WITH NEEDLEPOINT HOLES OR EQUAL EQUIVALENT BY THE LANDSCAPE CONTRACTOR.

**PLANT LIST**

SYMBOL	BOTANICAL NAME	COMMON NAME	SIZE	QUANTITY	REMARKS
RB	ACEA RUBRA 'RED SUNSET'	RED SUNSET RED MAJIE	2 1/2" CAL.	23	10' MIN. HT. B. & B.
RB	LAGESTROBIA NODA CAYAMBA	CAYAMA GARBE MYRTLE	8" HT.	14	8' MIN. HT. B. & B.
RB	BETULA NUBA	RIVER BIRCH	2 1/2" CAL.	11	10' MIN. HT. B. & B.
RB	QUERCUS ACOTISSIMA	SWAMPY OAK	2 1/2" CAL.	15	8' MIN. HT. B. & B.
AT	LEX SPICATA 'GREENLEAF'	GREENLEAF AMERICAN HOLLY	8" HT.	28	8' MIN. HT. B. & B.
RB	AREIA GRANDIFOLIA 'EMERALD COUCHER'	EMERALD COUCHER	5" HT.	79	5' MIN. HT. CONT.
RB	MIRCA GIBBERNA	WAX LEAF JUDAS TREE	5" HT.	44	5' MIN. HT. CONT.
RB	LEX SPICATA 'NEEDLEPOINT'	NEEDLEPOINT CHINESE HOLLY	5" HT.	28	5' MIN. HT. CONT.



SHEET  
C-2

LANDSCAPE & LIGHTING PLAN

**FARRELL PROPERTY**  
FARRINGTON POINT & MCGHEE RD., CHATHAM CO.

DATE: AUG. 14, 06  
SCALE: 1"=60'  
DRAWN: BTB  
JOB NO.:  
REVISIONS: 9-28-06 BTB REVISED

**BLAKELY DESIGN GROUP**  
Landscape Architecture Site Planning

700 Exposition Place, Suite 105, Raleigh, North Carolina 27615  
Telephone: (919) 872-1888 Fax: (919) 870-8752  
E-Mail: taylor@blakelydesign.net