

VICINITY MAP

NOT TO SCALE

DEVELOPER:

The Parks at Meadowview, LLC
 P.O. Box 607
 Pittsboro, NC 27312

CONSULTANTS:

Attorney Land Planner/Civil Engineer: Ecologist/Soils Evaluation Environmental Land Surveyor Traffic Engineer Wastewater Treatment Engineer Hydrogeologist Economic Analysis	Bradshaw & Robinson, LLP CE Group, Inc. Soil & Environmental Consultants Audubon International Absolute Land Surveying Ramney Kemp & Associates, Inc. W. Lee Fleming Jr., Engineer Edwin Andrews & Associates Miley Gallo & Associates
---	--

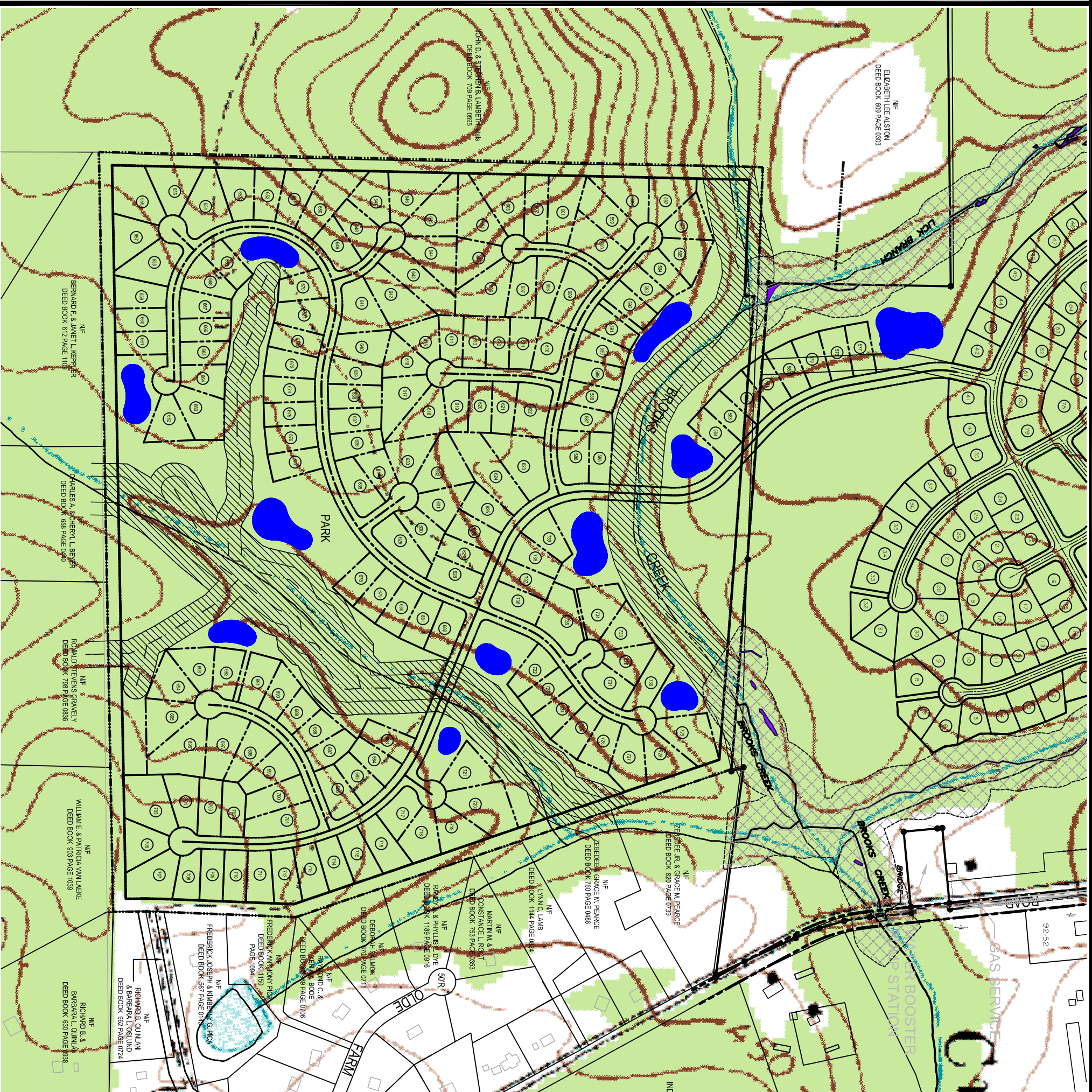
OVERALL SITE DATA

TOTAL SITE AREA: ± 948.46 Acres
 RESIDENTIAL LOT AREA: ± 323.4 Acres
 STREET RIGHT OF WAY: ± 79.1 Acres
 TOTAL OPEN SPACE: ± 538.5 Acres
 CENTRAL AMENITY AREA: ± 7.4 Acres

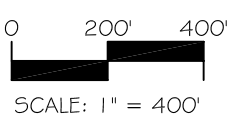
HARRIS PARCEL SITE DATA

TOTAL SITE AREA: ± 155.36 Acres
 RESIDENTIAL LOT AREA: ± 82.40 Acres
 STREET RIGHT OF WAY: ± 13.84 Acres
 OPEN SPACE (Not in Buffer): ± 31.68 Acres
 REQUIRED 50' BUFFER: ± 17.11 Acres
 ADDITIONAL 50' BUFFER: ± 10.33 Acres
 TOTAL OPEN SPACE: ± 59.12 Acres

NOTE: THE FEATURES DESCRIBED AND DEPICTED HEREIN ARE BASED ON CURRENT DEVELOPMENT PLANS. ACTUAL DEVELOPMENT MAY BE SUBJECT TO CHANGE BASED UPON FURTHER COUNTY REVIEW.



NORTH



Date: April 10, 2006

PUD Modification
 The Parks at Meadowview
 Chatham County, North Carolina
**NATURAL & HISTORICAL
 FEATURES INVENTORY MAP**

CE Group, inc.
 LAND PLANNING
 CIVIL ENGINEERING
 CONSTRUCTION MANAGEMENT
 11000 Regency Parkway, Suite 410, Cary, N.C. 27511
 Voice (919) 367-8790 Fax (919) 367-8791