

VICINITY MAP  
NOT TO SCALE

**DEVELOPER:**

The Parks at Meadowview, LLC  
P.O. Box 607  
Pittsboro, NC 27312

**CONSULTANTS:**

Attorney	Bradshaw & Robinson, LLP
Land Planner/Civil Engineer:	CE Group, Inc.
Ecologist/Soils Evaluation	Soil & Environmental Consultants
Environmental	Audubon International
Land Surveyor	Absolute Land Surveying
Traffic Engineer	Ramsey Kemp & Associates, Inc.
Wastewater	
Treatment Engineer	W. Lee Fleming Jr., Engineer
Hydrogeologist	Edwin Andrews & Associates
Economic Analysis	Miley Gallo & Associates

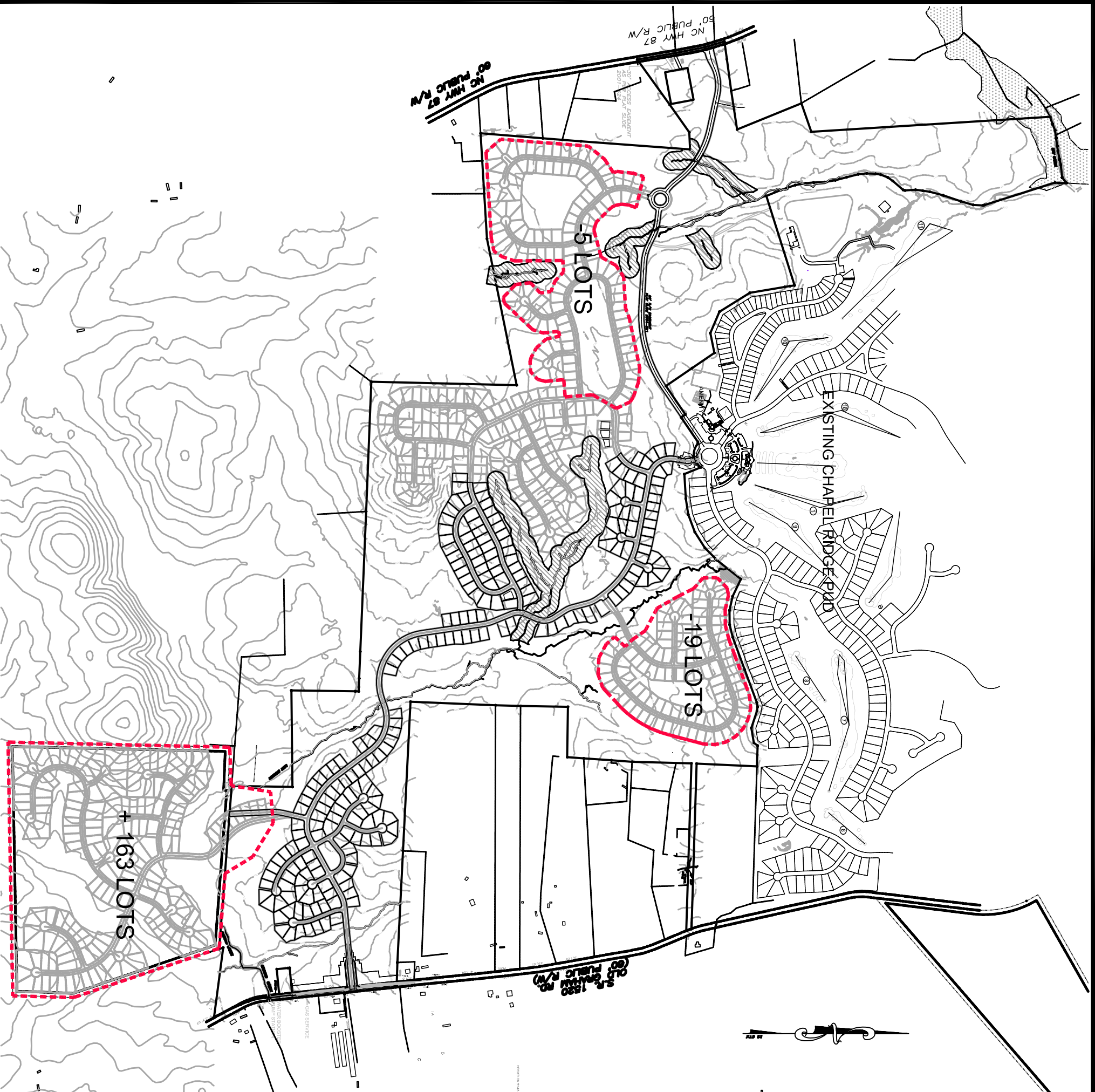
**OVERALL SITE DATA**

TOTAL SITE AREA: ± 948.46 Acres  
 RESIDENTIAL LOT AREA: ± 323.4 Acres  
 STREET RIGHT OF WAY: ± 79.1 Acres  
 TOTAL OPEN SPACE: ± 538.5 Acres  
 CENTRAL AMENITY AREA: ± 7.4 Acres

**HARRIS PARCEL SITE DATA**

TOTAL SITE AREA: ± 155.36 Acres  
 RESIDENTIAL LOT AREA: ± 82.40 Acres  
 STREET RIGHT OF WAY: ± 13.84 Acres  
 OPEN SPACE (Not in Buffer): ± 31.68 Acres  
 REQUIRED 50' BUFFER: ± 17.11 Acres  
 ADDITIONAL 50' BUFFER: ± 10.33 Acres  
 TOTAL OPEN SPACE: ± 59.12 Acres

NOTE: THE FEATURES DESCRIBED AND DEPICTED HEREIN ARE BASED ON CURRENT DEVELOPMENT PLANS. ACTUAL DEVELOPMENT MAY BE SUBJECT TO CHANGE BASED UPON FURTHER COUNTY REVIEW.



**CE Group, inc.**  
 LAND PLANNING  
 CIVIL ENGINEERING  
 CONSTRUCTION MANAGEMENT  
 11000 Regency Parkway, Suite 410, Cary, N.C. 27511  
 Voice (919) 367-8790 Fax (919) 367-8791

PUD Modification  
 The Parks at Meadowview  
 Chatham County, North Carolina  
**LOT COUNT MODIFICATIONS**

0 600 1200  
 SCALE: 1" = 1200'  
 Date: April 10, 2006

NORTH