

VICINITY MAP
NOT TO SCALE

DEVELOPER:

The Parks at Meadowview, LLC
P.O. Box 607
Pittsboro, NC 27312

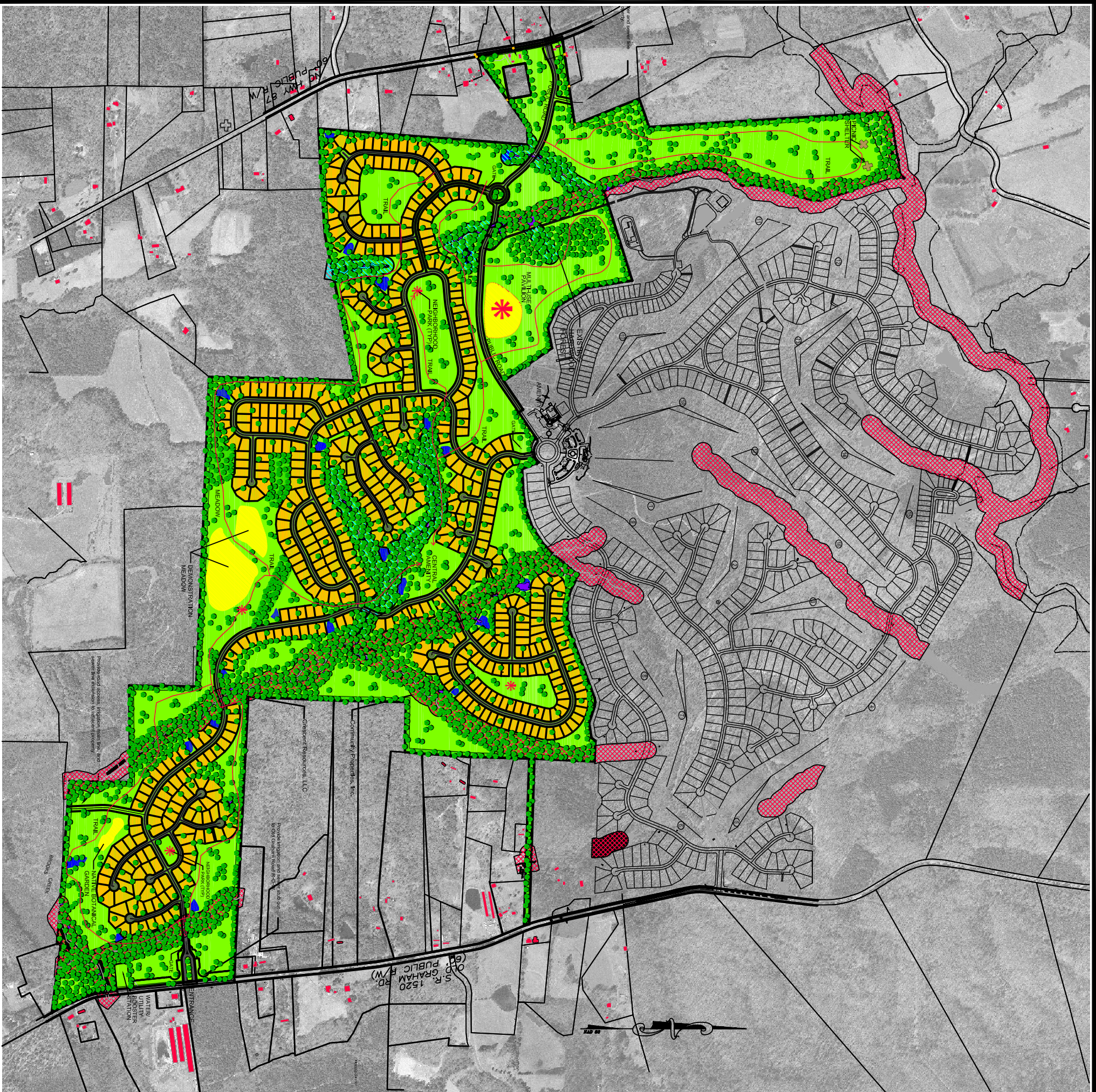
CONSULTANTS:

Attorney	Bradshaw & Robinson, LLP
Land Planner/Civil Engineer:	CE Group, Inc.
Ecologist/Soils Evaluation	Soil & Environmental Consultants
Environmental	Audubon International
Land Surveyor	Absolute Land Surveying
Traffic Engineer	Ramsey Kemp & Associates, Inc.
Wastewater	
Treatment Engineer	W. Lee Fleming Jr., Engineer
Hydrogeologist	Edwin Andrews & Associates
Economic Analysis	Miley Gallo & Associates

SITE DATA

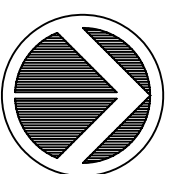
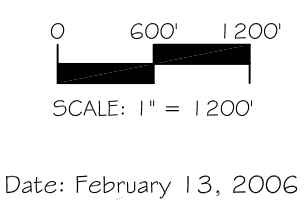
- 600 Residential Lots
 - ± 5,098 lf of Public Streets
 - ± 41,975 lf of Private Streets
 - ± 47,073 lf of Streets Total
 - Total Project Area : 793.1 ac
 - 600 Residential Lots ± 241 ac
 - Open Space ± 479.7 ac Total
 - Passive Open Space ± 218.5 ac
 - Active Open Space ± 261.2 ac
 - (Central Amenity ± 7.4 ac)
 - Road Right of Way ± 65.3 ac
- LEGEND:**
- Storm Water Treatment Area
 - Wooded Area (Open Space or In Lot)
 - Wooded Buffer
 - Meadows : ± 261.2 ac
 - Residential Lots (TYP.)

NOTE: THE FEATURES DESCRIBED AND DEPICTED HEREIN ARE BASED ON CURRENT DEVELOPMENT PLANS. ACTUAL DEVELOPMENT MAY BE SUBJECT TO CHANGE BASED UPON FURTHER COUNTY REVIEW.



CE Group, inc.
LAND PLANNING
CIVIL ENGINEERING
CONSTRUCTION MANAGEMENT
11000 Regency Parkway, Suite 410, Cary, N.C. 27511
Voice (919) 367-8790 Fax (919) 367-8791

PUD Modification
The Parks at Meadowview
Chatham County, North Carolina
APPROVED SKETCH MASTER PLAN



NORTH

3

EXHIBIT