

VICINITY MAP  
NOT TO SCALE

**DEVELOPER:**

The Parks at Meadowview, LLC  
P.O. Box 607  
Pittsboro, NC 27312

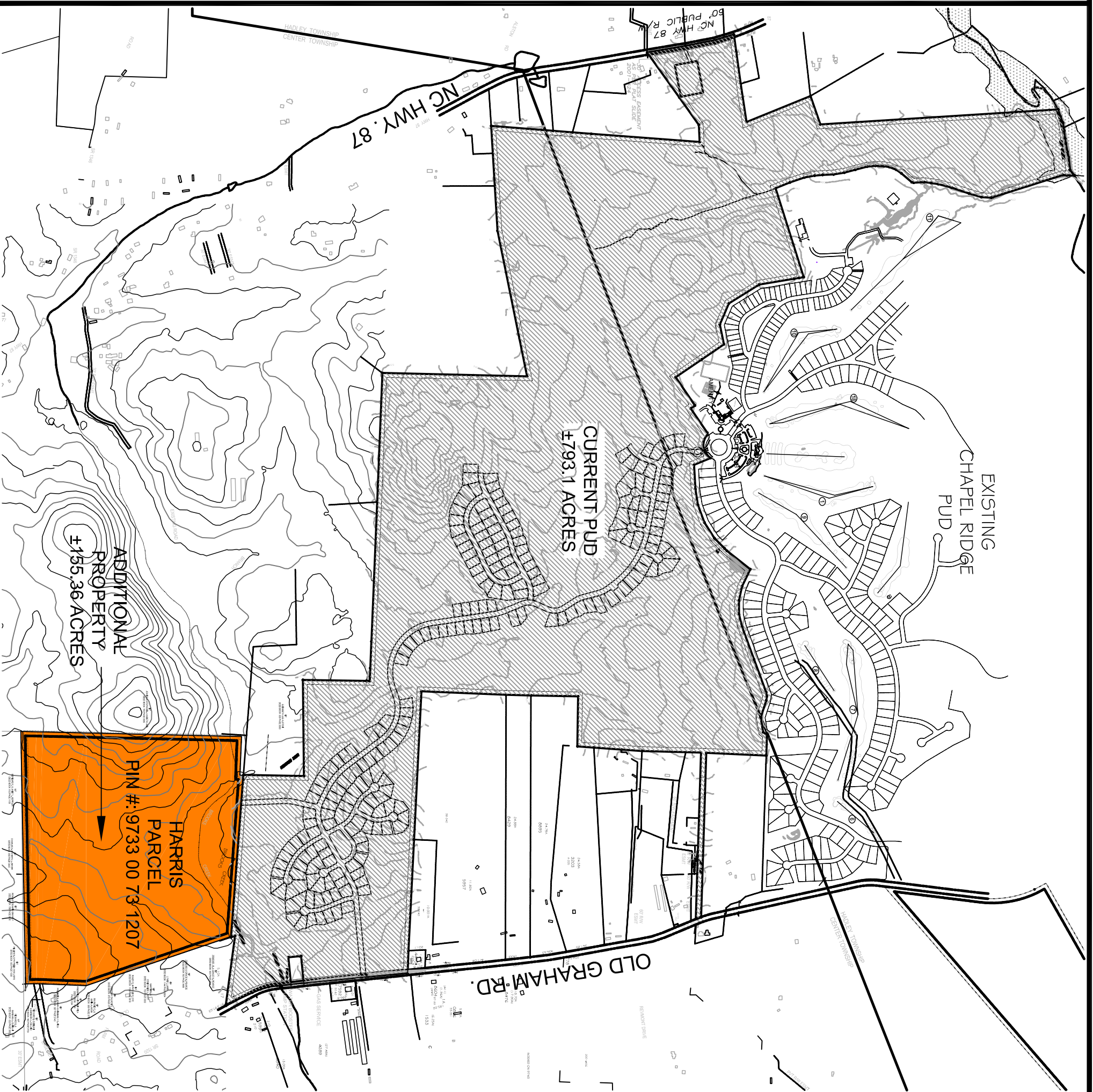
**CONSULTANTS:**

Attorney	Bradshaw & Robinson, LLP
Land Planner/Civil Engineer:	CE Group, Inc.
Ecologist/Soils Evaluation	Soil & Environmental Consultants
Environmental	Audubon International
Land Surveyor	Absolute Land Surveying
Traffic Engineer	Ramsey Kemp & Associates, Inc.
Wastewater	
Treatment Engineer	W. Lee Fleming Jr., Engineer
Hydrogeologist	Edwin Andrews & Associates
Economic Analysis	Miley Gallo & Associates

**SUMMARY:**

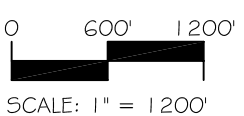
CURRENT APPROVED LOTS:	600
PROPOSED ADDITIONAL LOTS:	139
PROPOSED PUD LOT TOTAL	739
CURRENT PUD ACREAGE	± 793.1
ADDITIONAL PUD ACREAGE	± 155.36
PROPOSED PUD ACREAGE	± 948.46

NOTE: THE FEATURES DESCRIBED AND DEPICTED HEREIN ARE BASED ON CURRENT DEVELOPMENT PLANS. ACTUAL DEVELOPMENT MAY BE SUBJECT TO CHANGE BASED UPON FURTHER COUNTY REVIEW.

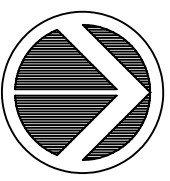


**CE Group, inc.**  
LAND PLANNING  
CIVIL ENGINEERING  
CONSTRUCTION MANAGEMENT  
11000 Regency Parkway, Suite 410, Cary, N.C. 27511  
Voice (919) 367-8790 Fax (919) 367-8791

PUD Modification  
The Parks at Meadowview  
Chatham County, North Carolina  
**KEY MAP**



Date: April 10, 2006



NORTH

**2**

EXHIBIT