

VICINITY MAP  
NOT TO SCALE

**DEVELOPER:**

The Parks at Meadowview, LLC  
P.O. Box 607  
Pittsboro, NC 27312

**CONSULTANTS:**

Attorney Land Planner/Civil Engineer: Ecologist/Soils Evaluation Environmental Land Surveyor Traffic Engineer Wastewater Treatment Engineer Hydrogeologist Economic Analysis	Bradshaw & Robinson, LLP CE Group, Inc. Soil & Environmental Consultants Audubon International Absolute Land Surveying Ramsey Kemp & Associates, Inc. W. Lee Fleming Jr., Engineer Edwin Andrews & Associates Miley Gallo & Associates
---	--

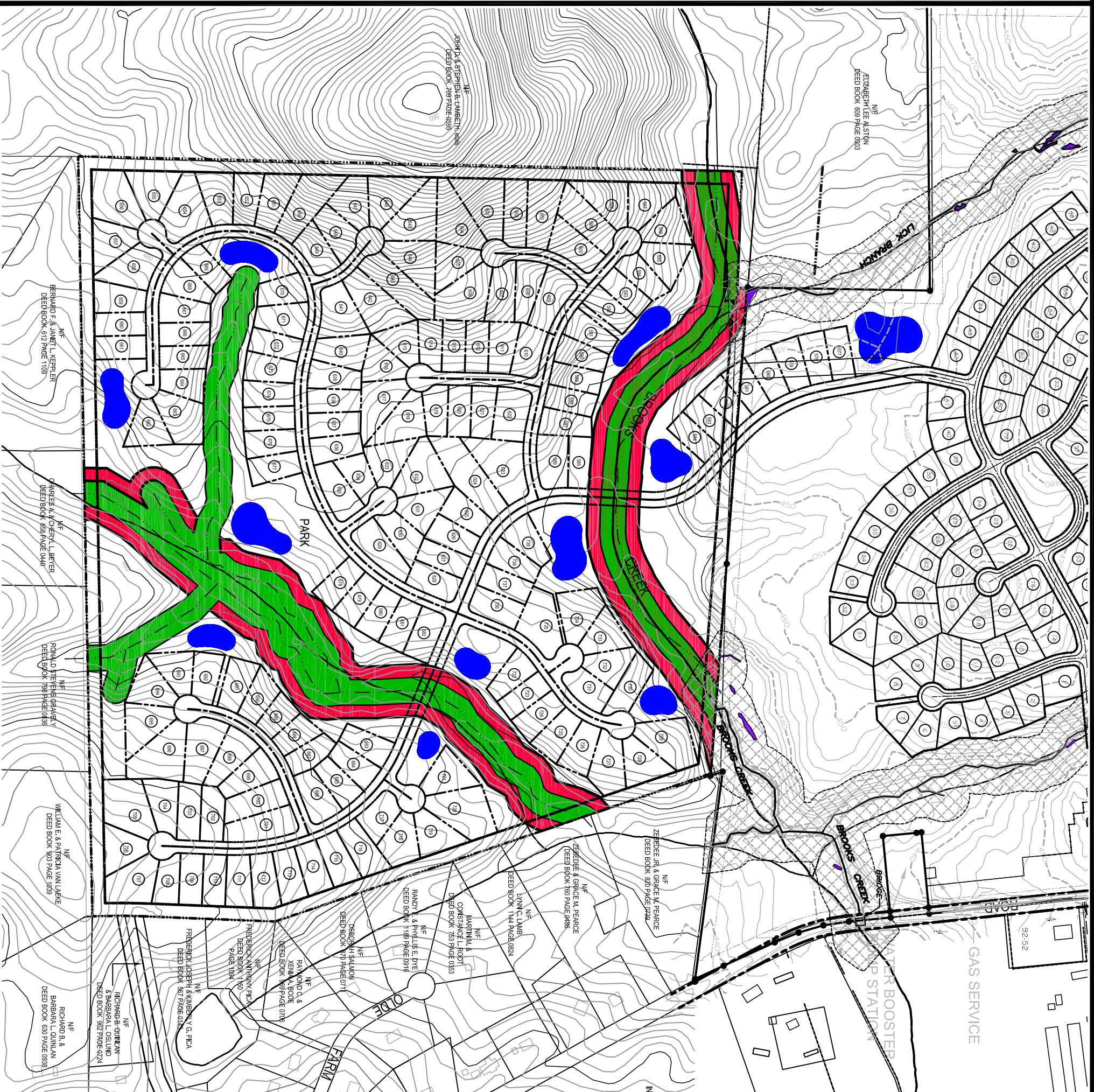
**LEGEND**

- 50 ft. (Each Side) Buffers within WS4 Protected Area (Required)
- 50 ft. (Each Side) Additional Buffers within WS4 Protected Area (Provided)
- Wet or Dry Pond

**HARRIS PARCEL SITE DATA**

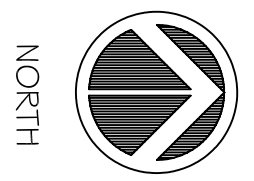
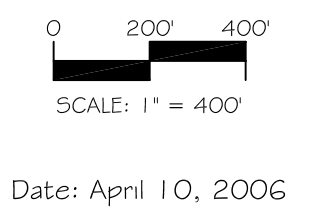
TOTAL SITE AREA:	± 155.36 Acres
RESIDENTIAL LOT AREA:	± 82.40 Acres
STREET RIGHT OF WAY:	± 13.84 Acres
OPEN SPACE (Not in Buffer):	± 31.68 Acres
REQUIRED 50' BUFFER:	± 17.11 Acres
ADDITIONAL 50' BUFFER:	± 10.33 Acres
TOTAL OPEN SPACE:	± 59.12 Acres

NOTE: THE FEATURES DESCRIBED AND DEPICTED HEREIN ARE BASED ON CURRENT DEVELOPMENT PLANS. ACTUAL DEVELOPMENT MAY BE SUBJECT TO CHANGE BASED UPON FURTHER COUNTRY REVIEW.



**CE Group, inc.**  
LAND PLANNING  
CIVIL ENGINEERING  
CONSTRUCTION MANAGEMENT  
11000 Regency Parkway, Suite 410, Cary, N.C. 27511  
Voice (919) 367-8790 Fax (919) 367-8791

PUD Modification  
The Parks at Meadowview  
Chatham County, North Carolina  
**BUFFER & STORMWATER  
MANAGEMENT PLAN**



**14**  
EXHIBIT