

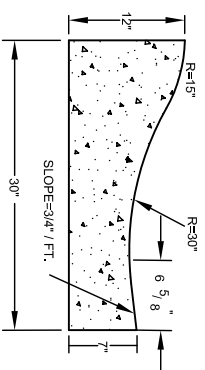
DEVELOPER:

The Parks at Meadowview, LLC
 P.O. Box 607
 Pittsboro, NC 27312

CONSULTANTS:

| | |
|---|---|
| Attorney Land Planner/Civil Engineer: Ecologist/Soils Evaluation Environmental Land Surveyor Traffic Engineer Wastewater Treatment Engineer Hydrogeologist Economic Analysis | Bradshaw & Robinson, LLP CE Group, Inc. Soil & Environmental Consultants Audubon International Absolute Land Surveying Ramey Kemp & Associates, Inc. W. Lee Fleming Jr., Engineer Edwin Andrews & Associates Miley Gallo & Associates |
|---|---|

NOTE: THE FEATURES DESCRIBED AND DEPICTED HEREIN ARE BASED ON CURRENT DEVELOPMENT PLANS. ACTUAL DEVELOPMENT MAY BE SUBJECT TO CHANGE BASED UPON FURTHER COUNTY REVIEW.

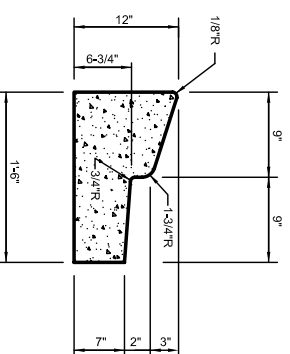


NOTES:

1. 10' MAXIMUM BETWEEN CONSTRUCTION JOINTS. 15' MAXIMUM BETWEEN CONSTRUCTION JOINTS ON MACHINE POURS.
2. 1/2" EXPANSION JOINT EVERY 90'.
3. 3000 PSI CONCRETE MINIMUM, 4" SLUMP MAXIMUM.
4. LIQUID MEMBRANE CURING COMPOUND SHALL MEET THE REQUIREMENTS OF SECTION 1026-2 OF NCDOT STANDARDS & SPECIFICATIONS FOR ROADS AND STRUCTURES.
5. ALL CONSTRUCTION JOINTS SHALL BE FILLED WITH JOINT FILLER AND SEALER IN ACCORDANCE WITH NCDOT ROADWAY STANDARD DETAIL 846.01.

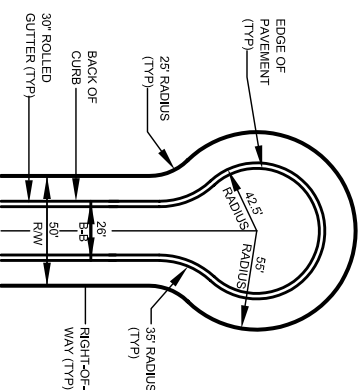
30" ROLLED TYPE GUTTER

NOT TO SCALE



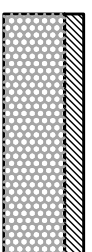
18" - MEDIAN GUTTER

NOT TO SCALE



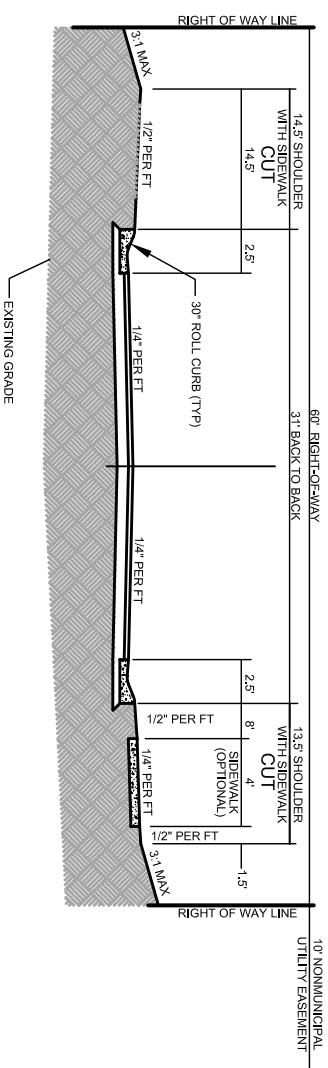
CUL-DE-SAC DETAIL

NOT TO SCALE



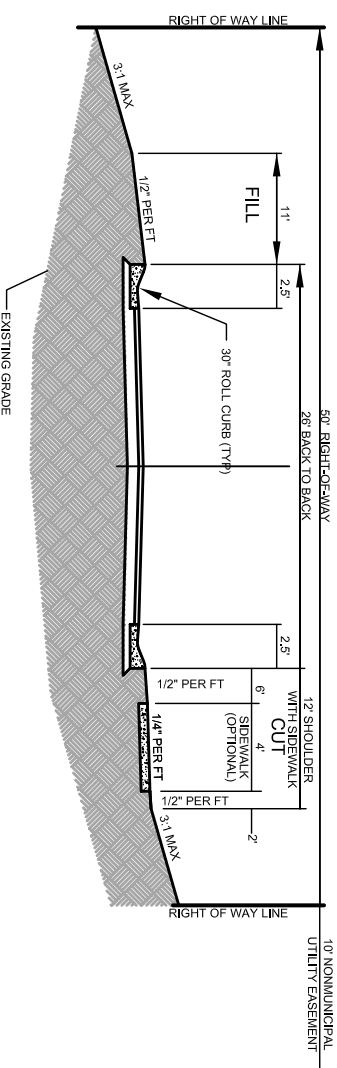
TYPICAL PAVEMENT SECTION (NCDOT STANDARD)

NOT TO SCALE



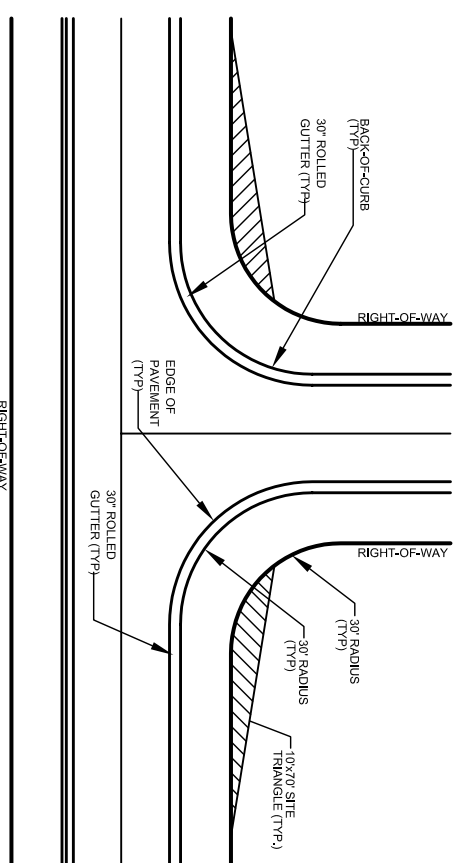
TYPICAL 31' BACK-TO-BACK SECTION (PRIVATE)

NOT TO SCALE



TYPICAL 26' BACK-TO-BACK SECTION (PRIVATE)

NOT TO SCALE



TYPICAL INTERSECTION DETAIL

NOT TO SCALE

