

VICINITY MAP
NOT TO SCALE

DEVELOPER:
The Parks at Meadowview, LLC
P.O. Box 607
Pittsboro, NC 27312

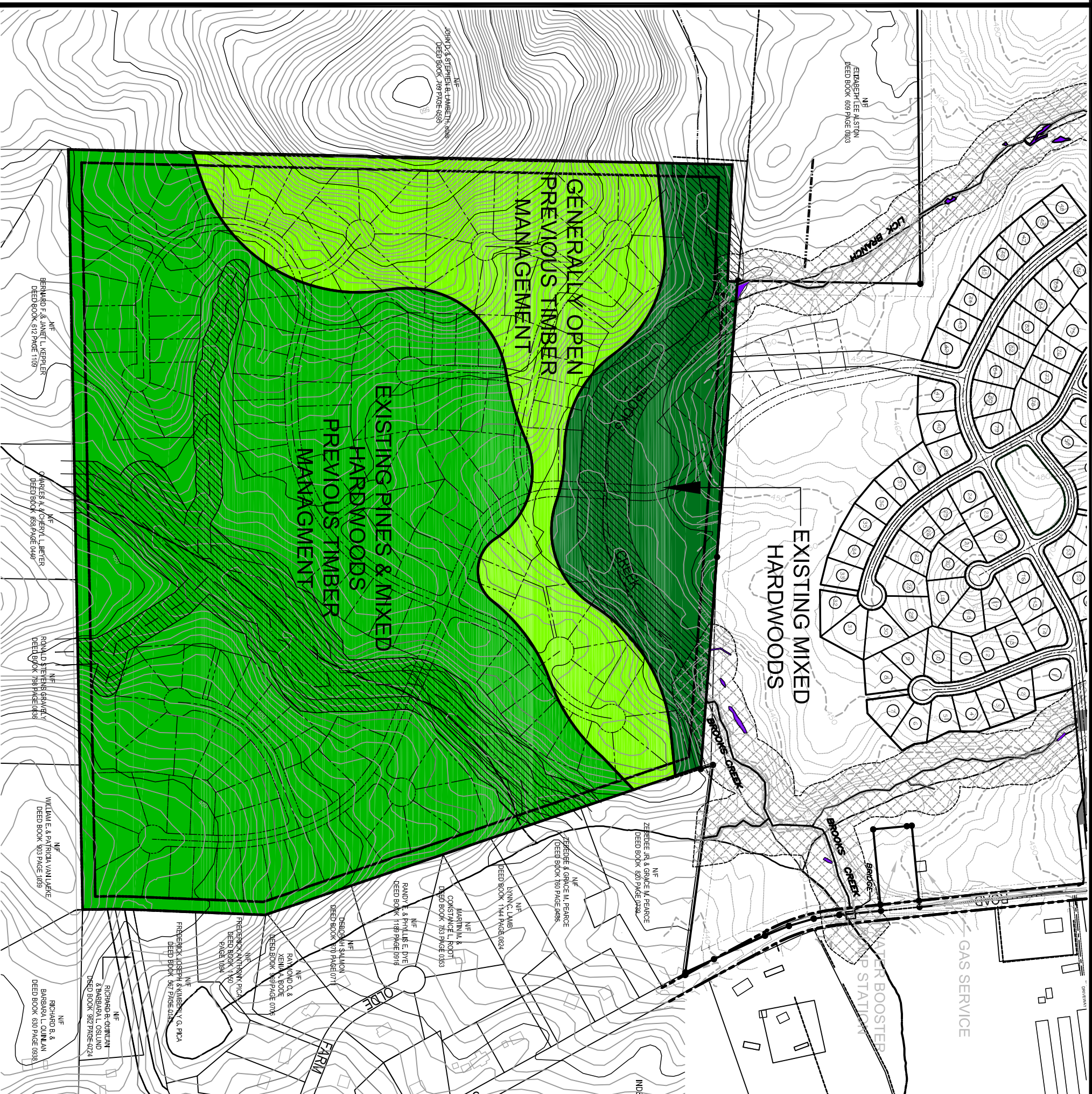
CONSULTANTS:

Attorney Land Planner/Civil Engineer: Ecologist/Soils Evaluation Environmental Land Surveyor Traffic Engineer Wastewater Treatment Engineer Hydrogeologist Economic Analysis	Bradshaw & Robinson, LLP CE Group, Inc. Soil & Environmental Consultants Audubon International Absolute Land Surveying Ramsey Kemp & Associates, Inc. W. Lee Fleming Jr., Engineer Edwin Andrews & Associates Miley Gallo & Associates
---	--

HARRIS PARCEL SITE DATA

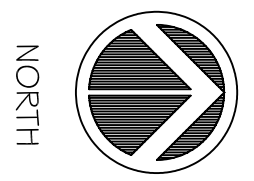
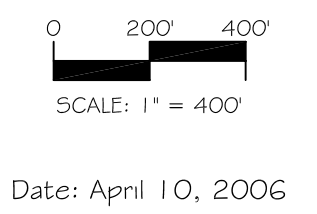
TOTAL SITE AREA:	± 155.36 Acres
RESIDENTIAL LOT AREA:	± 82.40 Acres
STREET RIGHT OF WAY:	± 13.84 Acres
OPEN SPACE (Not in Buffer):	± 31.68 Acres
REQUIRED 50' BUFFER:	± 17.11 Acres
ADDITIONAL 50' BUFFER:	± 10.33 Acres
TOTAL OPEN SPACE:	± 59.12 Acres

NOTE: THE FEATURES DESCRIBED AND DEPICTED HEREIN ARE BASED ON CURRENT DEVELOPMENT PLANS. ACTUAL DEVELOPMENT MAY BE SUBJECT TO CHANGE BASED UPON FURTHER COUNTY REVIEW.



CE Group, inc.
LAND PLANNING
CIVIL ENGINEERING
CONSTRUCTION MANAGEMENT
11000 Regency Parkway, Suite 410, Cary, N.C. 27511
Voice (919) 367-8790 Fax (919) 367-8791

PUD Modification
The Parks at Meadowview
Chatham County, North Carolina
EXISTING VEGETATION PLAN



11
EXHIBIT