

VICINITY MAP
NOT TO SCALE

DEVELOPER:

The Parks at Meadowview, LLC
P.O. Box 607
Pittsboro, NC 27312

CONSULTANTS:

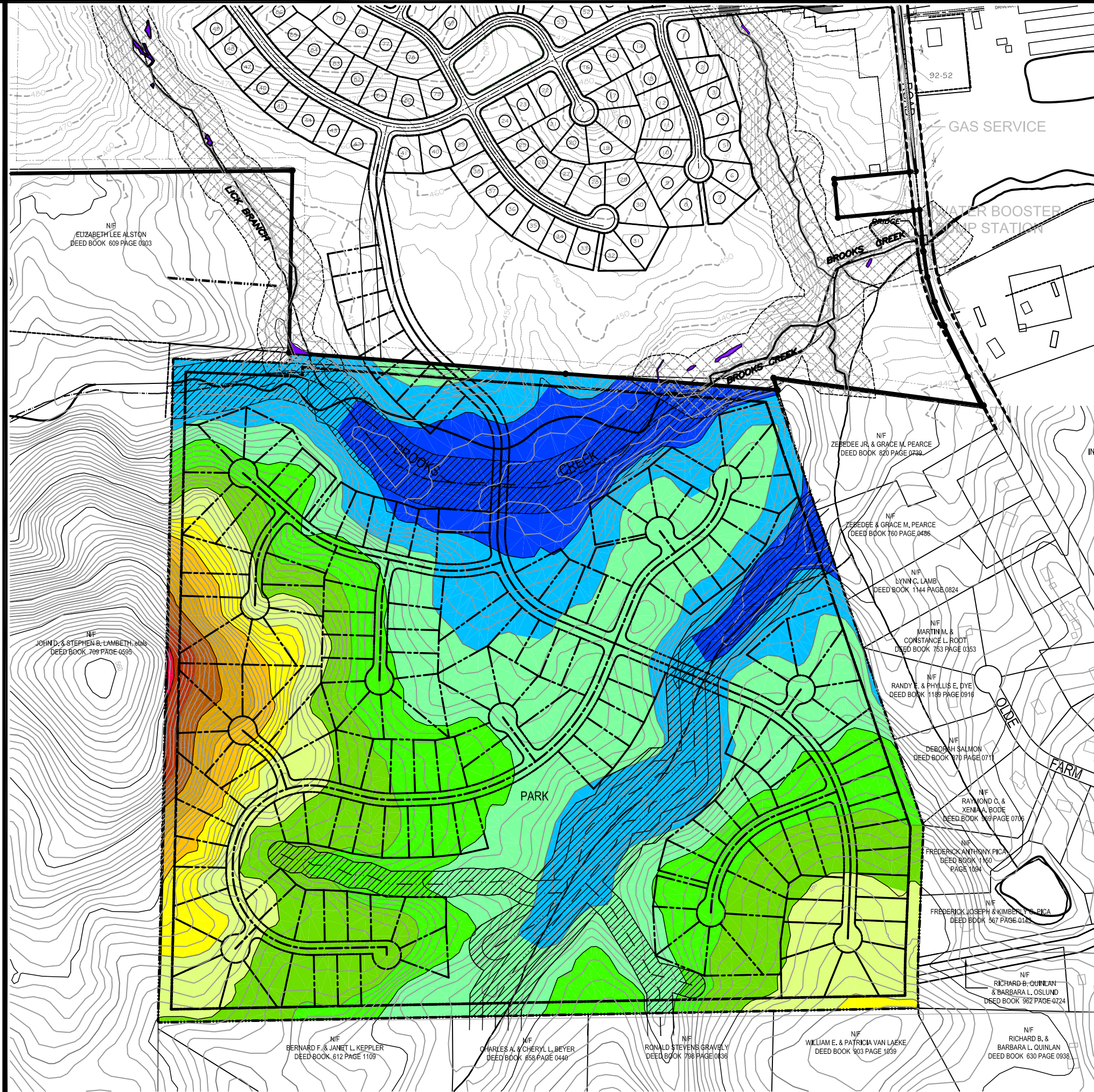
Attorney	Bradshaw & Robinson, LLP
Land Planner/Civil Engineer:	CE Group, Inc.
Ecologist/Soils Evaluation	Soil & Environmental Consultants
Environmental	Audubon International
Land Surveyor	Absolute Land Surveying
Traffic Engineer	Ramey Kemp & Associates, Inc.
Wastewater Treatment Engineer	W. Lee Fleming Jr., Engineer
Hydrogeologist	Edwin Andrews & Associates
Economic Analysis	Miley Gallo & Associates

LEGEND				
Color	Range Beg.	Range End	Percent	Area
Blue	430.00	440.00	9.6	651698.06
Light Blue	440.00	450.00	19.6	1332043.99
Light Green	450.00	460.00	25.4	1723130.49
Green	460.00	470.00	15.1	1023576.00
Light Yellow	470.00	480.00	12.7	859508.10
Yellow	480.00	490.00	9.4	635907.67
Orange	490.00	500.00	3.3	223921.72
Light Orange	500.00	510.00	2.0	134452.42
Orange	510.00	520.00	1.4	92879.65
Dark Orange	520.00	530.00	1.0	66949.87
Red-Orange	530.00	540.00	0.6	37786.31
Red	540.00	550.00	0.1	5594.21

HARRIS PARCEL SITE DATA

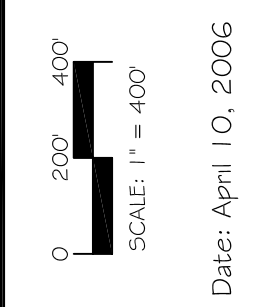
TOTAL SITE AREA:	± 155.36 Acres
RESIDENTIAL LOT AREA:	± 82.40 Acres
STREET RIGHT OF WAY:	± 13.84 Acres
OPEN SPACE (Not in Buffer):	± 31.68 Acres
REQUIRED 50' BUFFER:	± 17.11 Acres
ADDITIONAL 50' BUFFER:	± 10.33 Acres
TOTAL OPEN SPACE:	± 59.12 Acres

NOTE: THE FEATURES DESCRIBED AND DEPICTED HEREIN ARE BASED ON CURRENT DEVELOPMENT PLANS. ACTUAL DEVELOPMENT MAY BE SUBJECT TO CHANGE BASED UPON FURTHER COUNTY REVIEW.



CE Group, Inc.
LAND PLANNING
CIVIL ENGINEERING
CONSTRUCTION MANAGEMENT
11000 Regency Parkway, Suite 410, Cary, N.C. 27511
Voice (919) 367-8790 Fax (919) 367-8791

PUD Modification
The Parks at Meadowview
Chatham County, North Carolina
ELEVATION BANDING



10
EXHIBIT