

**DEVELOPER:**

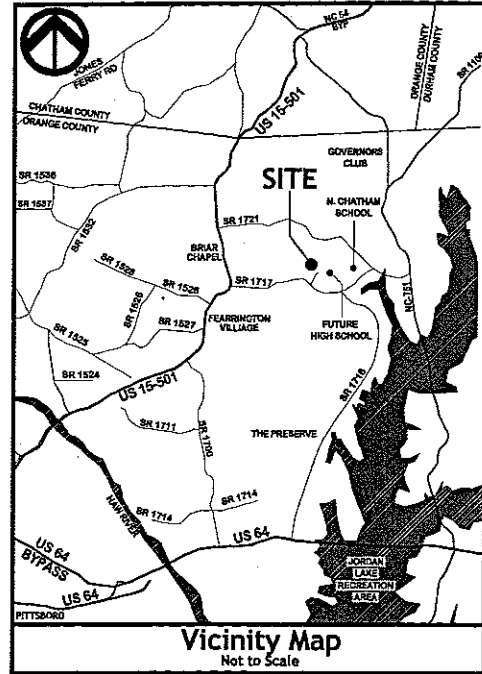
MacGregor Development Company  
201 Shannon Oaks Circle, Suite 201  
Cary, North Carolina 27511

- \* DENOTES LOTS WITH 200' NO BUILD SETBACK FROM PROJECT BOUNDARY
- \*\* DENOTES LOTS WITH 100' NO BUILD SETBACK FROM PROJECT BOUNDARY

**CONSULTANTS:**

Attorneys ..... Bradshaw & Robinson, LLP  
Civil Engineer/Land Planner ..... C. E. Group, Inc.  
Wastewater Treatment Design ..... W. Lee Fleming, Jr. Engineering  
Hydrologist ..... Edwin Andrews & Associates, P.C.  
Ecologist/Soils Evaluation ..... Soil & Environmental Consultants, P.A.  
Surveyor ..... Smith and Smith Surveyors  
Transportation Engineer ..... Ramey Kemp & Associates

NOTE: THE FEATURES DESCRIBED AND DEPICTED HEREIN ARE BASED UPON CURRENT DEVELOPMENT PLANS. ACTUAL DEVELOPMENT MAY BE SUBJECT TO CHANGE BASED UPON FURTHER COUNTY REVIEW.

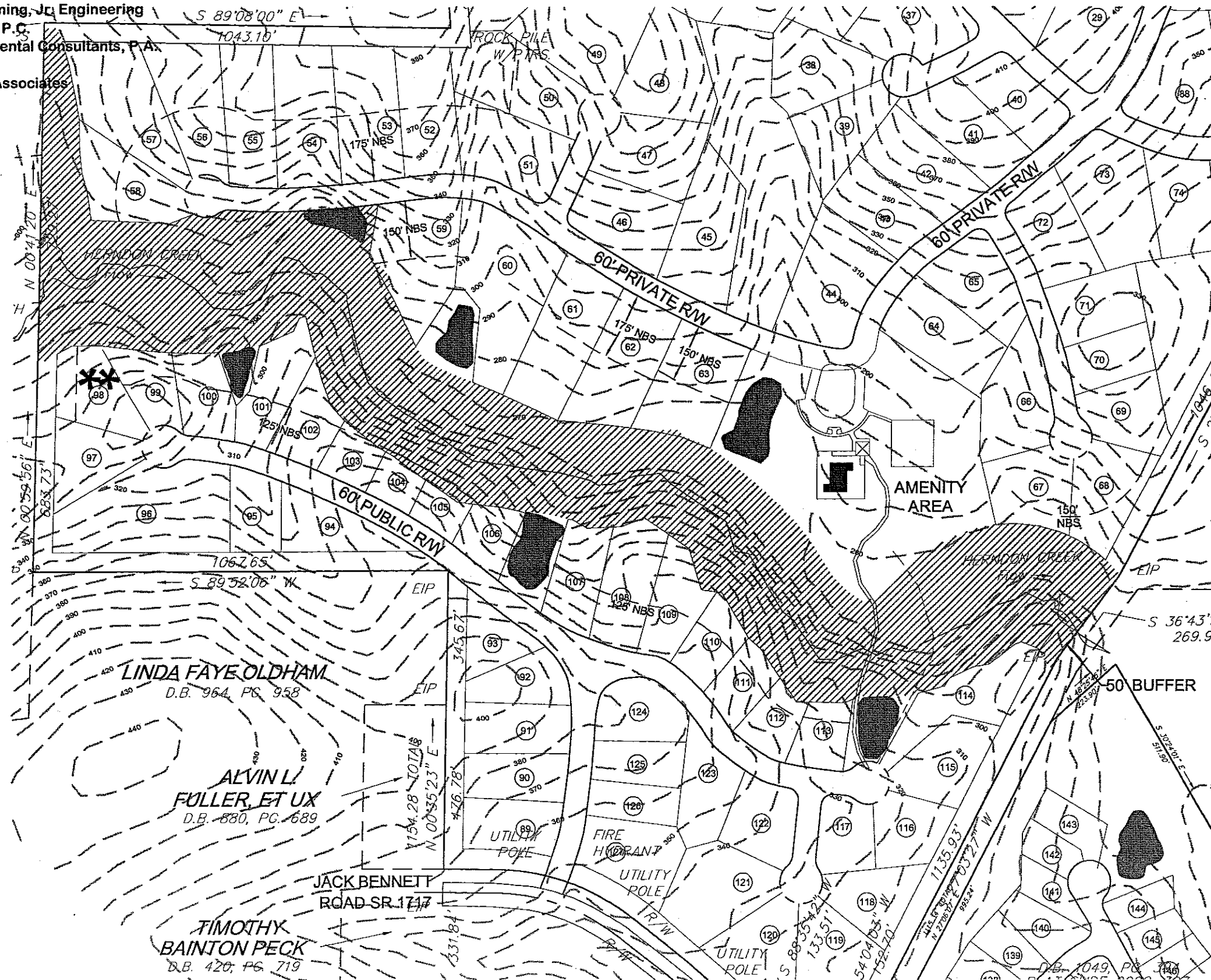


Vicinity Map  
Not to Scale

**SITE SUMMARY:**

- SINGLE FAMILY HOMESITES (180 TOTAL)
  - 88 Estate Lots (± 150' width)
  - 39 Neighborhood Lots (± 100' width)
  - 53 Village Lots (± 80' width)

TOTAL SITE AREA (294.32 ACRES)



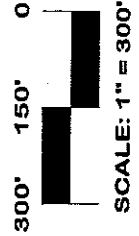
BOOTH MOUNTAIN, CHATHAM COUNTY, NORTH CAROLINA

Booth Mountain Community

**APPROVED SKETCH MASTER PLAN  
AMENITY LOCATION  
EXHIBIT MAP**



NORTH



SCALE: 1" = 300'



LAND USE EVALUATION  
CIVIL ENGINEERING  
CONSTRUCTION MANAGEMENT

1051 Pemberton Hill Road, Suite 201, Apex, N.C. 27502  
voice (919) 367-0790 fax (919) 367-0791

January 2005