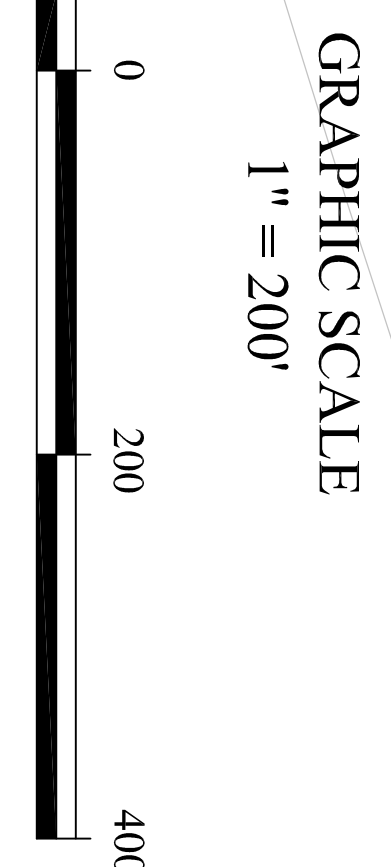
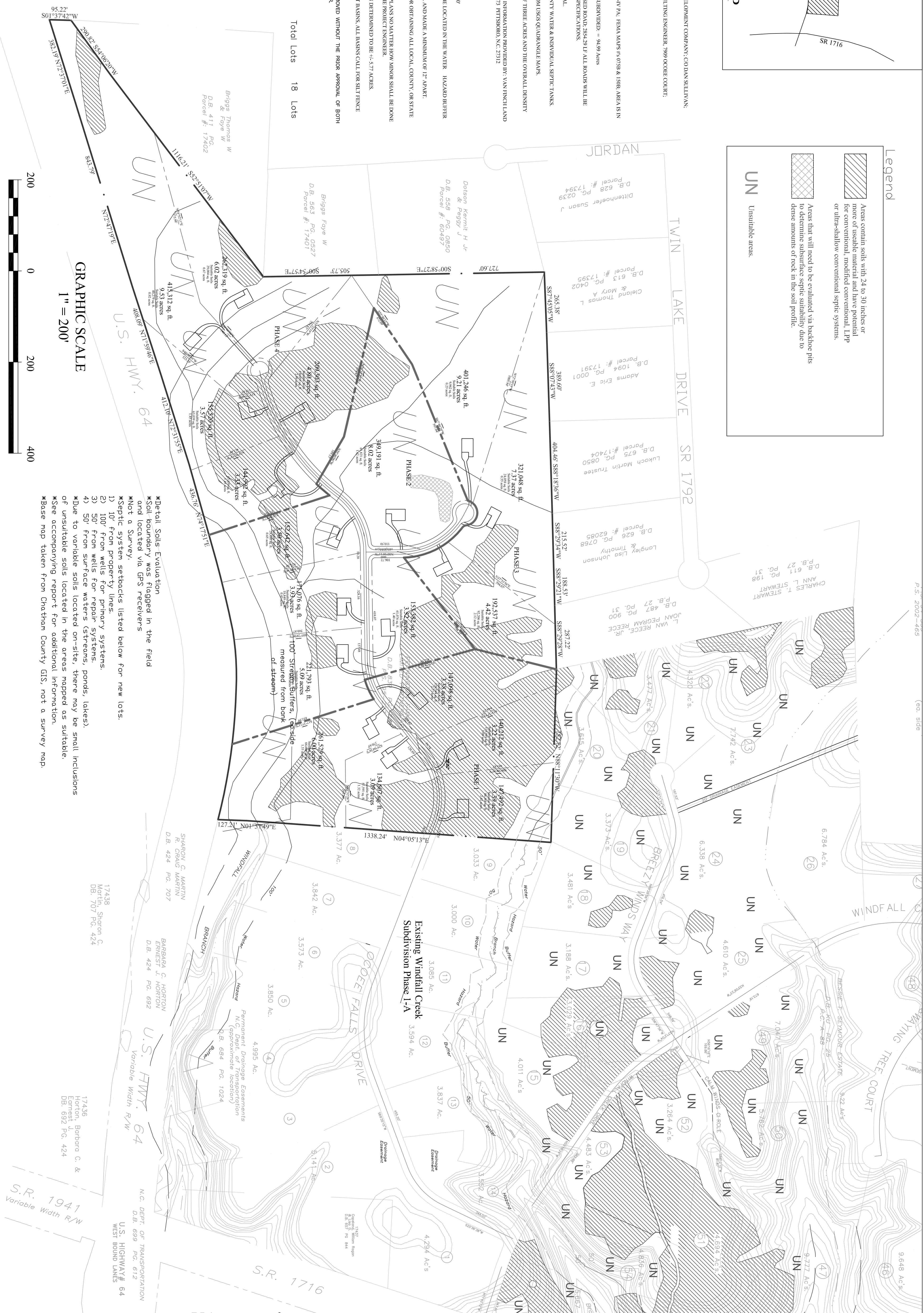


NOTES:

1. THE DEVELOPER IS: CONVENTRYA GREEN DEVELOPMENT COMPANY, COTYAN SULLIVAN, 89020 SIXTIONS ROAD, RALEIGH, N.C. 27615
2. THE ENGINEER IS: JOHN W. HARRIS, P.E. CONSULTING ENGINEER, 7909 OCOEE COURT, RALEIGH, N.C. 27612, (919) 789-0744
3. PIN# 971244974000
4. DEED REFERENCE BOOK 839 PG. 0721
5. ZONING: R-4.5. WATERSHED DESIGNATION: WSA-VI 7A. FEMA MAPS: 9709B & 198B. AREA IS IN ZONE: X
6. APPROXIMATE TOTAL ACRES OF LAND TO BE SUBDIVIDED: ~ 94.99 ACRES
7. APPROXIMATE TOTAL LINEAR FEET OF PROPOSED ROAD: 284.29 LF. ALL ROADS WILL BE PUBLIC AND BUILT TO NC DOT STANDARDS AND SPECIFICATIONS
8. ALL LOTS WILL BE SINGLE FAMILY, RESIDENTIAL.
9. ALL LOTS WILL BE SERVED WITH PUBLIC COUNTY WATER & INDIVIDUAL SEPTIC TANKS
10. TOPOGRAPHIC INFORMATION WAS TAKEN FROM USGS QUADRANGLE MAPS.
11. ALL LOTS WILL HAVE A MINIMUM LOT SIZE OF THREE ACRES AND THE OVERALL DENSITY SHALL BE FIVE ACRES PER LOT.
12. BOUNDARY INFORMATION WAS TAKEN FROM INFORMATION PROVIDED BY VAN RICHLAND SURVEYS, 109 HILLSBORO STREET, P.O. BOX 915, TITUSBORO, N.C. 27172
14. RIGHT-OF-WAY WIDTHS SHALL BE 50'
15. CURB-DE-SACS SHALL BE 55' RADIUS
16. PAVEMENT RADII IN CURB-DE-SACS SHALL BE 40'
17. NO STRUCTURES OR SEPTIC SYSTEMS SHALL BE LOCATED IN THE WATER. HAZARD BUFFER AREAS
18. EACH WATER LINE TYPE SHALL BE INDIVIDUAL AND MADE A MINIMUM OF 12" APART.
19. THE CONTRACTOR SHALL BE RESPONSIBLE FOR OBTAINING ALL LOCAL, COUNTY, OR STATE REQUIRED BUILDING PERMITS.
20. ANY CHANGES OR DEVIATIONS FROM THESE PLANS NO MATTER HOW MINOR SHALL BE DONE ONLY WITH THE EXPRESS PRE-APPROVAL OF THE PROJECT ENGINEER.
21. THE TOTAL AREA OF DISTURBANCE HAS BEEN DETERMINED TO BE 4.57 ACRES.
22. TO PREVENT SHORT CIRCUITING OF SEDIMENT BASINS, ALL BASINS CALL FOR SILENCE FLOW DIVERSIONS PER BASIN DETAIL.
23. NO EMISSION CONTROL MEASURES MAY BE REMOVED WITHOUT THE PRIOR APPROVAL OF BOTH THE PROJECT ENGINEER AND NOCERH INSPECTOR.

DEVELOPMENT SCHEDULE
April 2006 to April 2007
Total Lots 18 Lots



- *Detail Soils Evaluation
- *Soil boundary was flagged in the field and located via GPS receivers
- *NOT a Survey.
- *Septic system setbacks listed below for new lots:
 - 1) 10' from property lines.
 - 2) 100' from wells for primary systems.
 - 3) 50' from wells for repair systems.
 - 4) 50' from surface waters (streams, ponds, lakes).
- *Due to variable soils located on-site, there may be small inclusions of unsuitable soils located in the areas mapped as suitable.
- *See accompanying report for additional information.
- *Base map taken from Chatham County GIS, not a survey map.

SHARON C. MARTIN
R. CRAIG MARTIN
D.B. 424 PG. 707

BENJAMIN C. HORTON
D.B. 424 PG. 692

MARTIN, Sharon C.
D.B. 707 PG. 424

Horton, Barbara C. &
D.B. 692 PG. 424

U.S. HWY. 64
Variable Width R/W

N.C. DEPT. OF TRANSPORTATION
D.B. 699 PG. 612

U.S. HIGHWAY 64
WEST BOUND LINES

Permanent Draining Easements
N.C. Dept. of Transportation
(approximate location)
D.B. 684 PG. 1024

4,995 Ac.

3,850 Ac.

3,573 Ac.

3,842 Ac.

3,377 Ac.

3,000 Ac.

3,033 Ac.

3,188 Ac.

3,079 Ac.

4,011 Ac.

4,809 Ac.

4,483 Ac.

4,602 Ac.

4,809 Ac.

3,264 Ac.

4,610 Ac.

6,338 Ac.

4,320 Ac.

7,742 Ac.

6,784 Ac.

9,648 Ac.

9,277 Ac.

3,264 Ac.

3,188 Ac.

3,079 Ac.

4,011 Ac.

4,809 Ac.

4,483 Ac.

4,602 Ac.

4,809 Ac.

3,264 Ac.

4,610 Ac.

6,338 Ac.

4,320 Ac.

7,742 Ac.

6,784 Ac.

9,648 Ac.

9,277 Ac.

<h1>Preliminary Plan</h1> <p>For</p> <h2>Pennington Subdivision</h2>	<p>Date: 6-20-06 Scale: 1" = 200' Drawn By: BAH Job #: 20604 File: Wking.dwg Revision: 1 June 2006 7-18-06 8-4-06</p>	<p>John W. Harris, P.E. Consulting Engineer 7909 Ocoee Ct. Raleigh, N.C. 27612 (919) 789-0744</p>	
--	---	--	--