



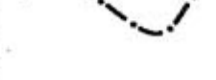
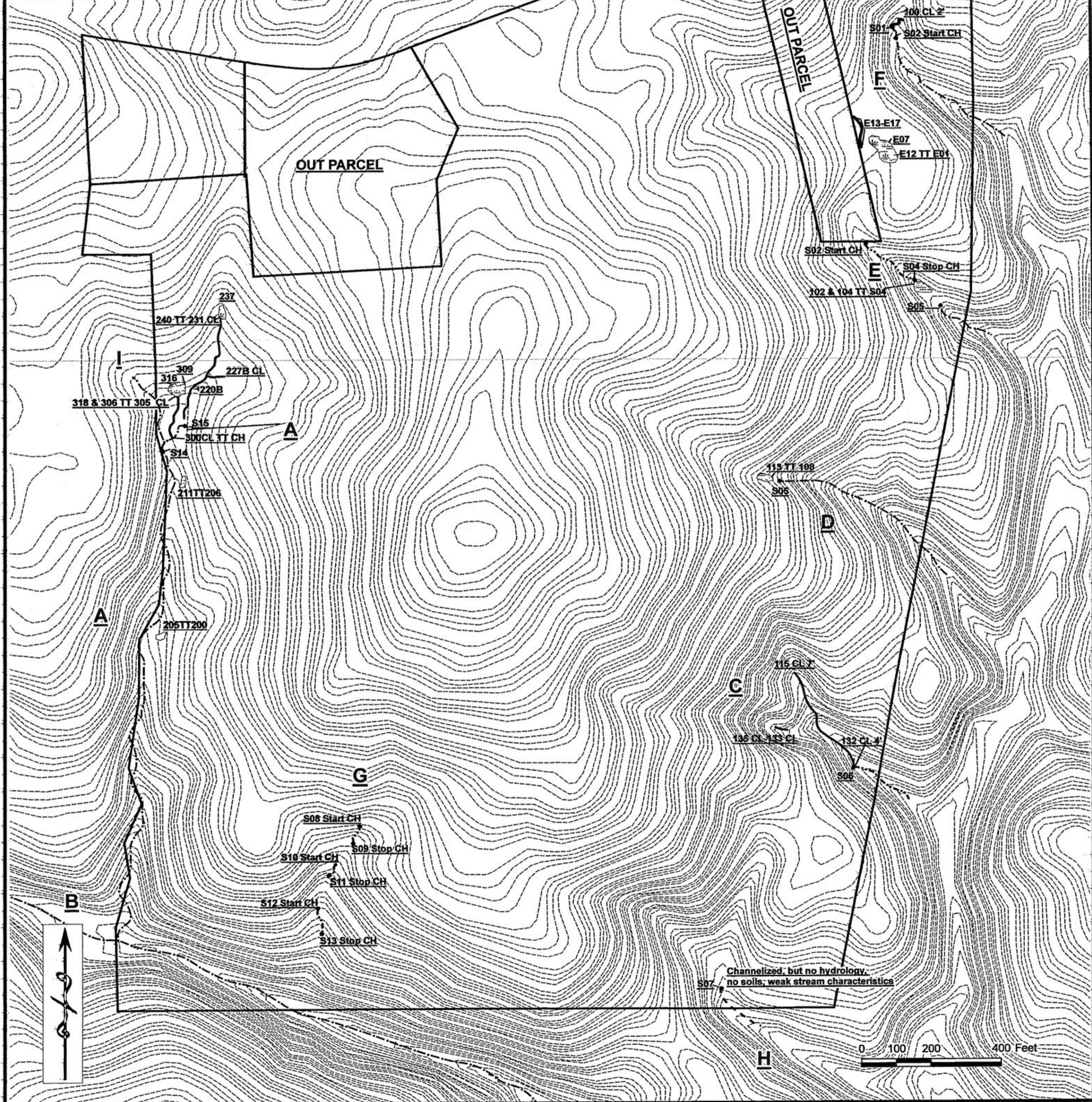


Legend

-  = WETLANDS/LINEAR WETLANDS [must be confirmed by the USACE]
 -  = MARGINAL WETLANDS/LINEAR WETLANDS [must be confirmed by the USACE]
 -  = WATERS OF THE US POTENTIALLY SUBJECT TO THE CHATHAM COUNTY
STREAM BUFFERS [i.e., intermittent streams; must be confirmed by the USACE]
 -  = WATERS OF THE US POTENTIALLY SUBJECT TO THE CHATHAM COUNTY
STREAM BUFFERS [i.e., perennial streams; must be confirmed by the USACE]
 -  = MARGINAL CHANNEL
- PL = PL TT = TIE TO CH = CHANNEL CV = CULVERT

S&EC Soil & Environmental Consultants, PA
 11010 Raven Ridge Road, Raleigh, North Carolina 27614
 Phone: (919) 846-5900 Fax: (919) 846-9467

Wetland Approximation
 Suitable for Preliminary Planning Only
 S&EC reserves the right to modify this map based on more fieldwork, surveyed delineations and any other additional information. Approximations were mapped using topographic maps and ground truthing. If these areas are to be used, they must be approved and Permitted by the U.S. Army Corps of Engineers.



S&EC Soil & Environmental Consultants, PA
 11010 Raven Ridge Rd. • Raleigh, NC 27614
 (919) 846-5900 • (919) 846-9467
 Web Page: www.SandEC.com
 April 12, 2006

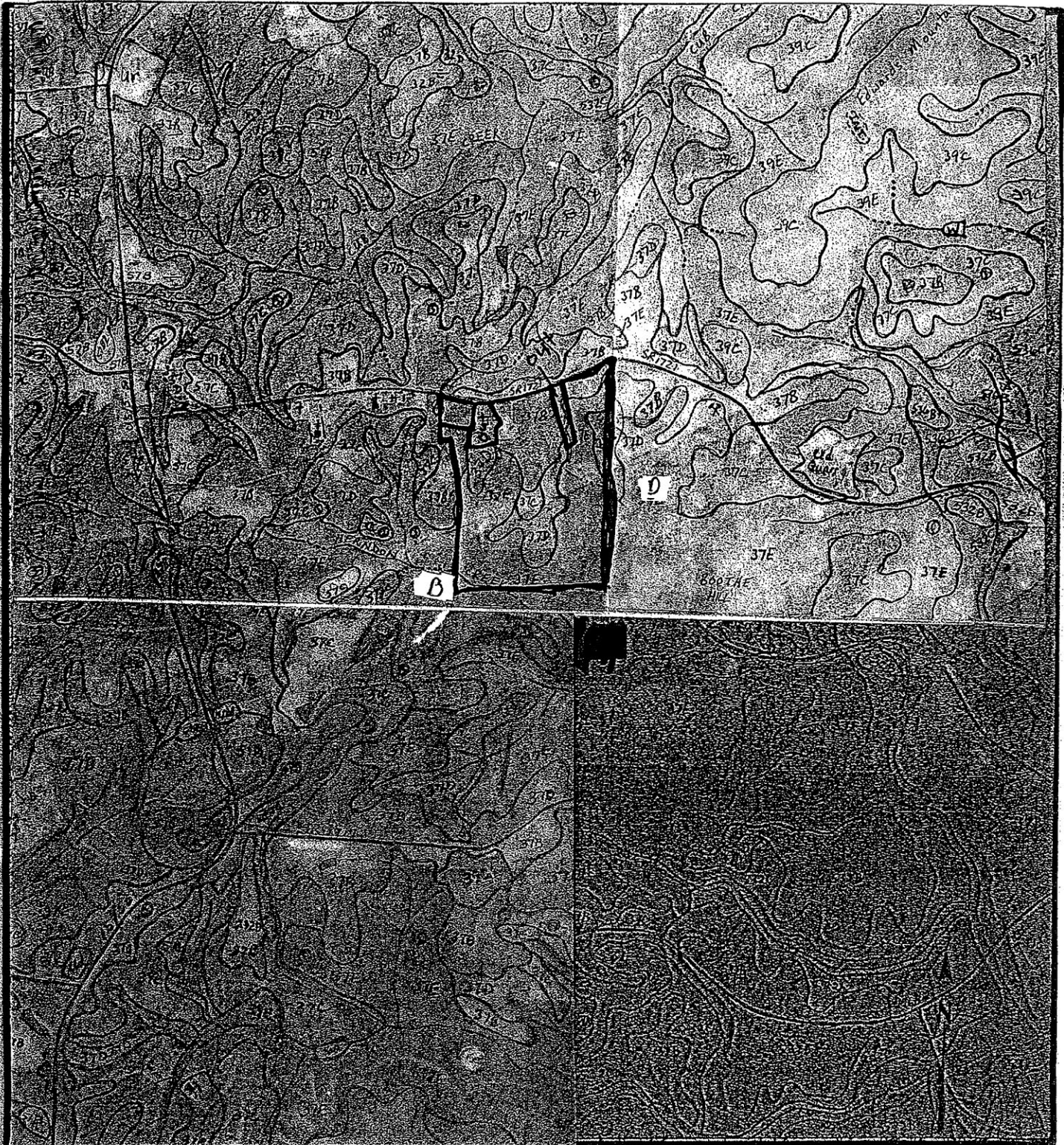
Wetland Field Sketch Map


Project Manager: Jason Payne	Project Number: 8330.W3
---------------------------------	----------------------------

Scale:
1" = 200'

Prepared by:
Steven Ball

Lystra Road
 W.R. Henderson & Assoc.
 Chatham Co., NC



Project No. 8330.W3	<p align="center"> Figure 2 - NRCS Soil Survey Map Lystra Road W.R. Henderson & Assoc. Chatham County, NC </p>	 <p align="center"> Soil & Environmental Consultants, PA 11010 Raven Ridge Rd. • Raleigh, NC 27614 (919) 846-5900 • (919) 846-9467 Web Page: www.SandEC.com </p>
Project Mgr.: JP		
Scale: 1" = 2,000'	Chatham County Soil Survey Sheets H1, H2, H3 & H4	
03/27/06		