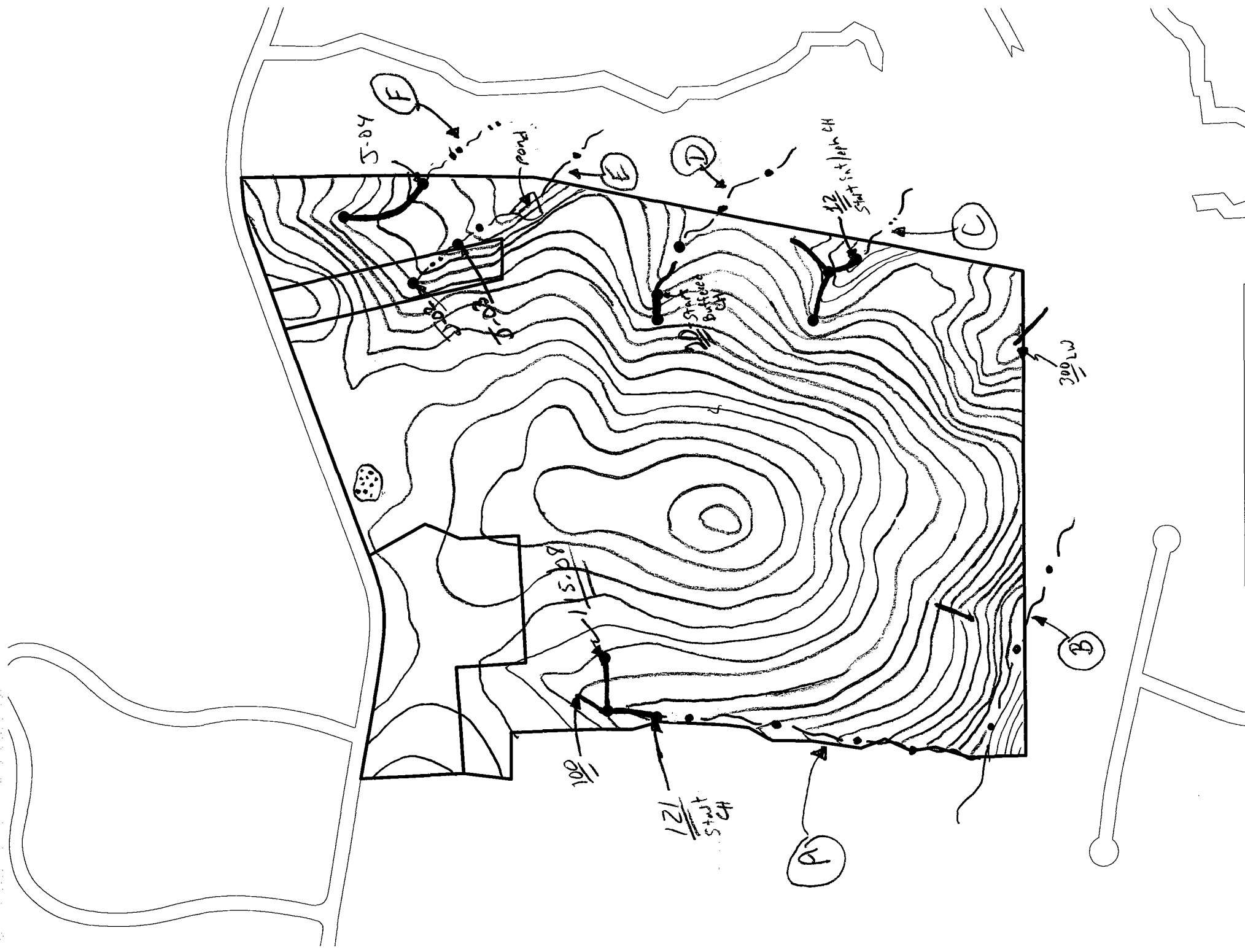
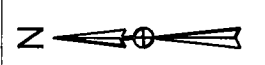




**Soil & Environmental Consultants, PA**  
 11010 Raven Ridge Road, Raleigh, North Carolina 27614  
 Phone: (919) 846-5900 Fax: (919) 846-9467

**Preliminary Buffer Approximation**  
 Suitable for Preliminary Planning Only

S&EC reserves the right to modify this map based on more fieldwork, surveyed delineations and any other additional information. Approximations were mapped using topographic maps and ground truthing. If these areas are to be used, they must be approved and permitted by the NC Division of Water Quality.



**Legend**

- = WETLANDS/LINEAR WETLANDS [must be confirmed by the USACE]
- = MARGINAL WETLANDS [must be confirmed by the USACE]
- = WATERS OF THE US POTENTIALLY SUBJECT TO THE PROPOSED CAPE FEAR RIVER BUFFERS [i.e., intermittent streams; must be confirmed by the USACE and DWQ]
- = WATERS OF THE US POTENTIALLY SUBJECT TO THE PROPOSED CAPE FEAR RIVER BUFFERS [i.e., perennial streams; must be confirmed by the USACE and DWQ]
- = BOUNDARY OF EVALUATED AREA
- = TIE TO CH = CHANNEL
- = PROPERTY LINE

**Wetland Sketch Map**  
 140 Acre - Chatham County Site  
 John R. McAdams Company  
 Chatham County, NC

**S&EC**  
**Soil & Environmental Consultants, PA**  
 11010 Raven Ridge Rd. • Raleigh, NC 27614  
 (919) 846-5900 • (919) 846-9467  
 Web Page: www.SandEC.com

Project No.  
03.8330.W1

Project Manager:  
Todd Preuninger

Prepared by:  
Jason Payne

December 17, 2003