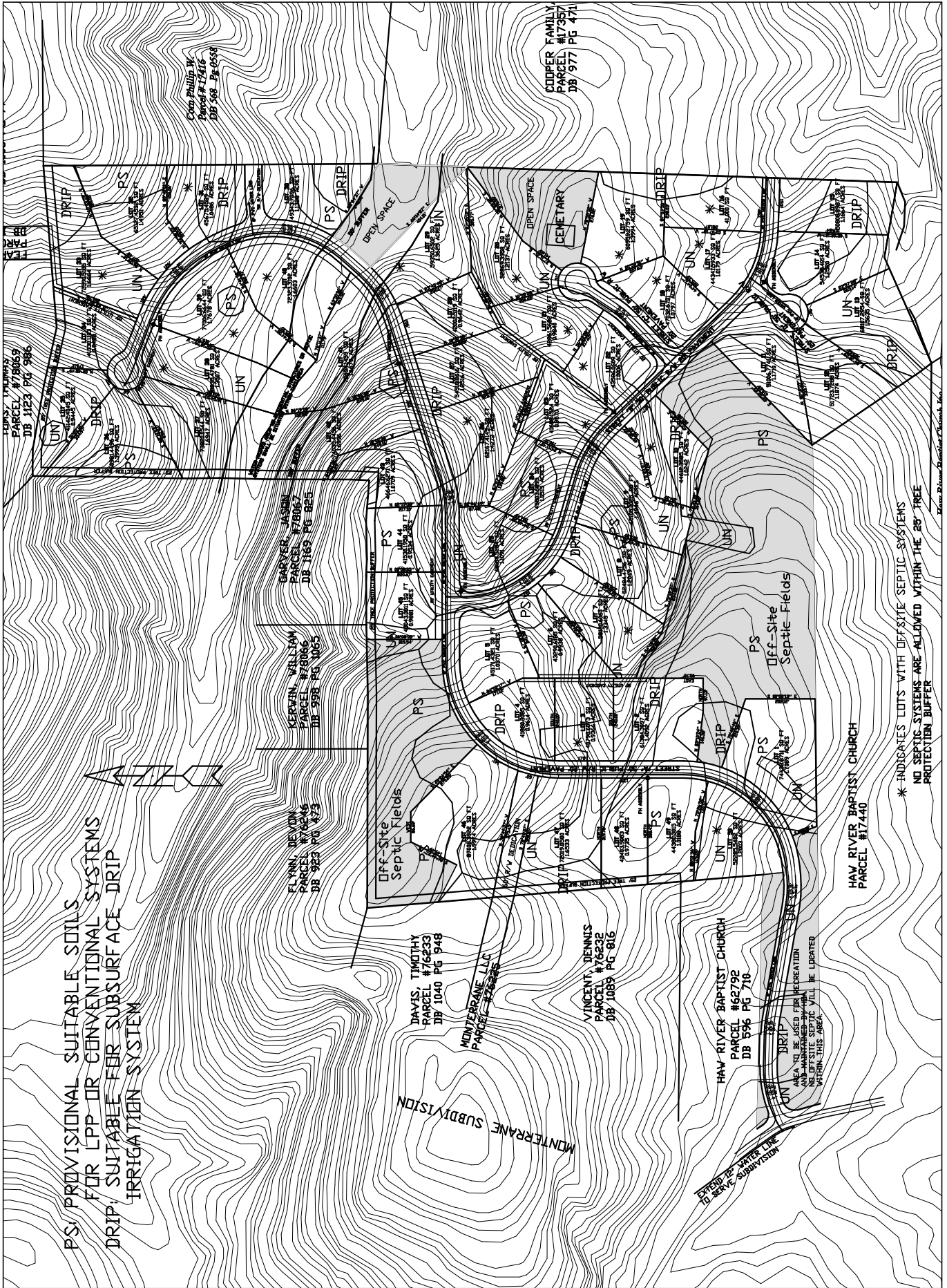


PS: PROVISIONAL SUITABLE SOILS
FOR LPP OR CONVENTIONAL SYSTEMS
DRIP: SUITABLE FOR SURFACE DRIP
IRRIGATION SYSTEM



PRELIMINARY SKETCH PLAN
PARKER SPRINGS SUBDIVISION
P/A DEVELOPMENT
MAKERS, INC.

REVISIONS:
10/6/06
SCALE:
1"=120'
DRAWN BY:
KMR
DATE:
8/21/06
PROJECT NO.
00-315

SHEET
2
OF
2

ENVIRONMENTAL CONSULTING SERVICES, INC.
1401 GARDNER ROAD, SUITE 200
GARDNER, NC 27030 853-0411