

DEC. 14, 2005 CHATHAM COUNTY APPEARANCE COMMISSION MEETING

MEMBERS PRESENT:

SUE SCHWARTZ (CHAIR), DAVID HENRY, GINNY GREGORY, KIM ARCHER, PHIL DARK

FARRELL PROPERTY ON HWY 64 E OF PBO ACROSS HWY FROM BUILDERS SOURCE

PRESENTER:

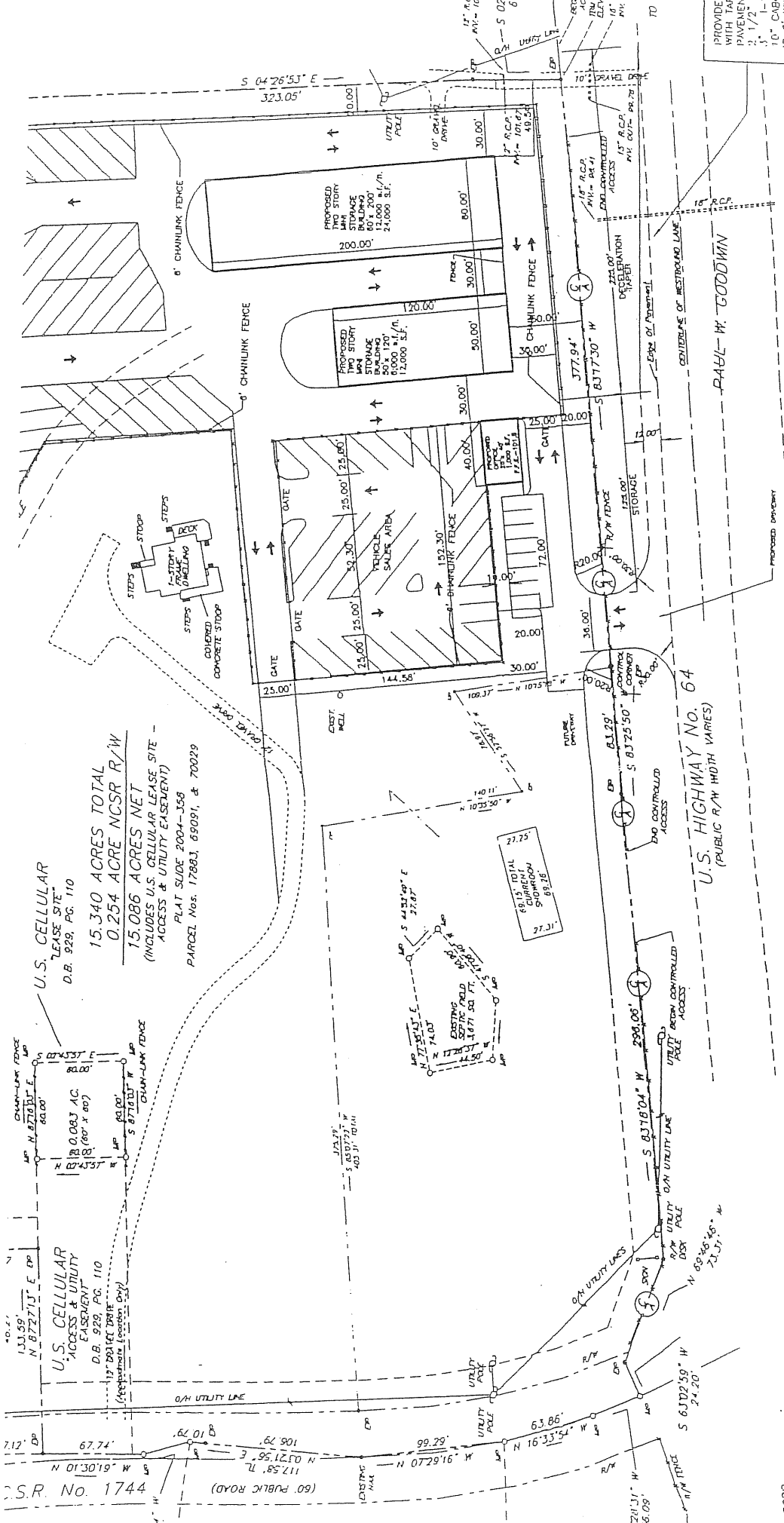
GEO. FARRELL, JR.

REASON FOR VISIT:

- SEEKING TO ADD NEW USE ( MODULAR HOME DISPLAY) TO CONDITIONAL USE PERMIT

RECOMMENDATION OF APP. COMM.:

- PARKING LOT SPACES FRONTING HWY 64 SHOULD BE RE-ARRANGED TO INCORPORATE LANDSCAPED ISLANDS WITH NO MORE THAN 10 SPACES ON EITHER SIDE OF ISLANDS.
- TWO 4'X8' SIGNS ON THE LANDSCAPED ISLANDS (ONE PER) SHALL BE LIGHTED IN ACCORDANCE WITH COUNTY ORDINANCE REGULATIONS.



U.S. CELLULAR  
LEASE SITE  
D.B. 928, PG. 110

15.340 ACRES TOTAL  
0.254 ACRE NCSR R/W

15.086 ACRES NET  
(INCLUDES U.S. CELLULAR LEASE SITE -  
ACCESS & UTILITY EASEMENT)

PLAT SLIDE 2004-358  
PARCEL Nos. 17863, 69081, & 70029

GOLDSTON APEX PROPERTIES, LLC  
D.B. 728, PG. 1100  
PLAT SLIDE 97-285

Portion of Plan  
Approved 1-18-05

PROVIDE WITH TALKING PAVEMENT 2'-1/2" 10" CAB IS 6" WITH SECTION

S.S.R. No. 1744

75000

