

# Copeland Property

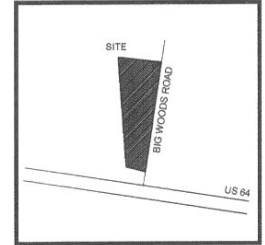
at the corner of US 64 and Big Woods Road  
Chatham County, North Carolina

### Planting Calculations

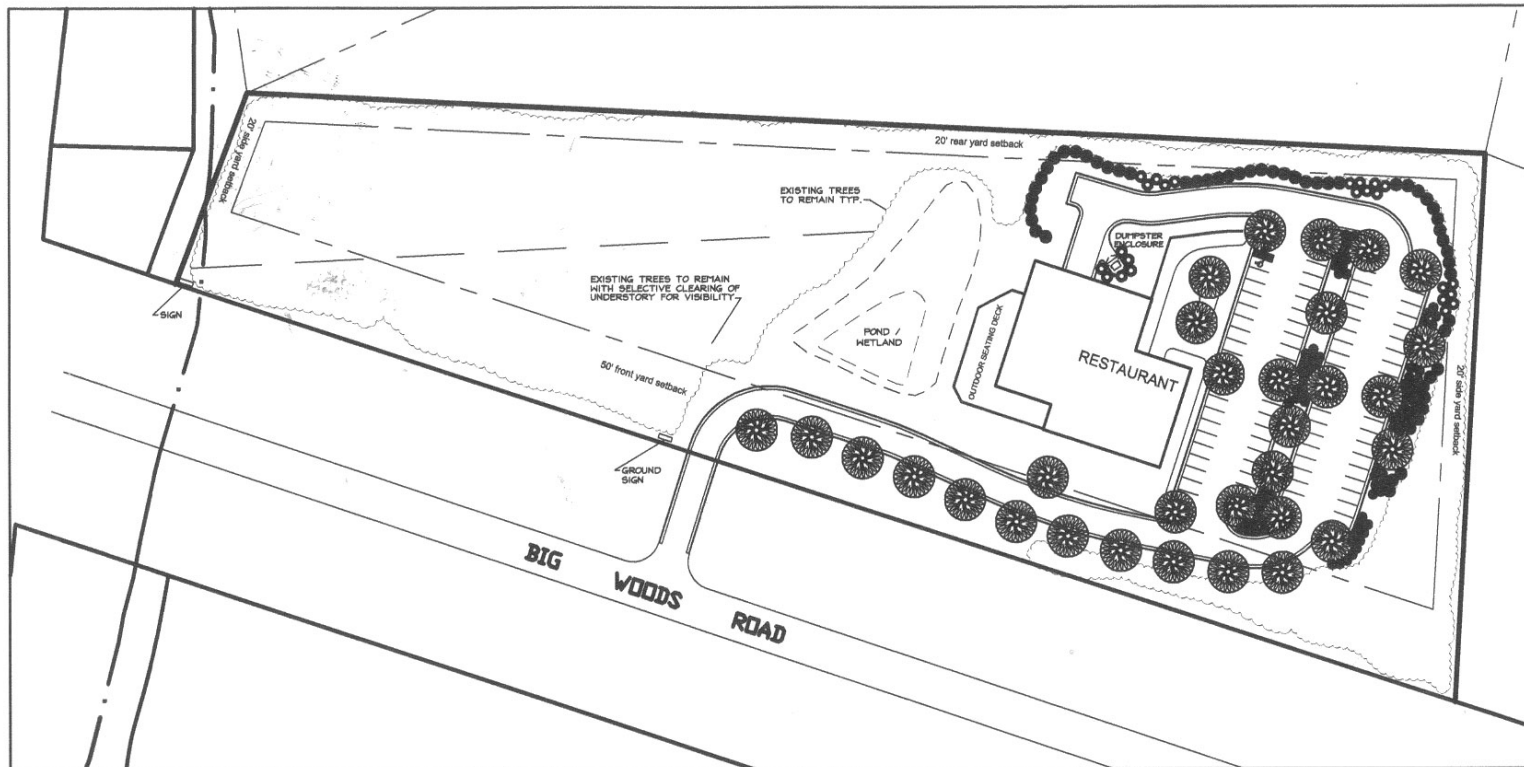
Paved Area	39,721 sf
Trees Required	20
Shrubs Required	79
Street Trees Required	1 per 40'
Buffers Required	15' Type A

### Plant List and Legend

symbol	botanic name	common name	size	container
	<i>Quercus phellos</i>	Willow Oak	2.5' cal.	B&B
	<i>Juniperus virginiana</i>	Eastern Red Cedar	6' ht.	25 gal.
	<i>Ilex cornuta 'needlepoint'</i>	Needlepoint Holly		
	<i>Myrica cerifera</i>	Wax Myrtle	24" ht.	3 gal.



Vicinity



### Planting

December 19, 2005



Land Planning • Landscape Architecture  
Urban Design • Construction Management  
400 Heritage Village Lane  
Apex, North Carolina 27502 919 387 0218  
919 387 6548 fax  
CrawfordPlanningandDesignA.com

### Crawford Planning and Design EA

This document is an uncontracted "preliminary" design and is for informational purposes only. It is not a contract and is not to be used for any other purpose without the express written consent of Crawford Planning and Design EA.

