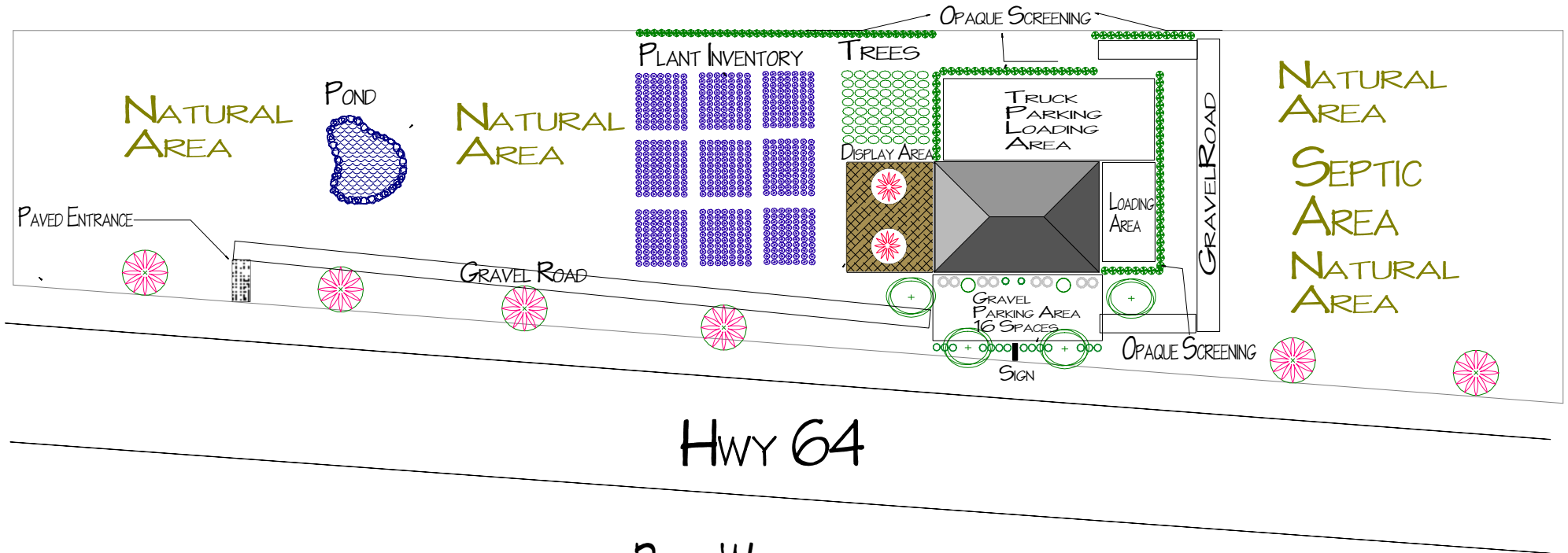


EVERGREEN COMPANIES INC.

BENNETT
HORSE
FACILITY
PARKING

FENCED HORSE
PASTURE



ROYCE WEBSTER

SITE TO BE DEVELOPED PRESERVING NATURAL HARDWOODS
CURRENTLY LOCATED ON THE PROPERTY.

NATURAL TOPOGRAPHY TO BE PRESERVED WITH MINIMAL
GRADING.

TOTAL IMPERVIOUS AREA = 18%

| LEGEND | |
|----------------|--------------------------------------|
| SHRUB | |
| | BOXWOOD, COMMON |
| | PLANT INVENTORY |
| | LAUREL, CHERRY, OTTO LUYKEN |
| | ARBORVITAE, EMERALD |
| | HOLLY, NELLIE STEVENS |
| | MAPLE, OCTOBER GLORY |
| TREE | |
| | CHERRY, KWANZAN FLOWERING |
| | TREE INVENTORY |
| | CHERRY, YOSHINO |
| | CYPRESS, DWARF BLUE |
| WATER FEATURES | |
| | IRRIGATION AND STORM COLLECTION POND |