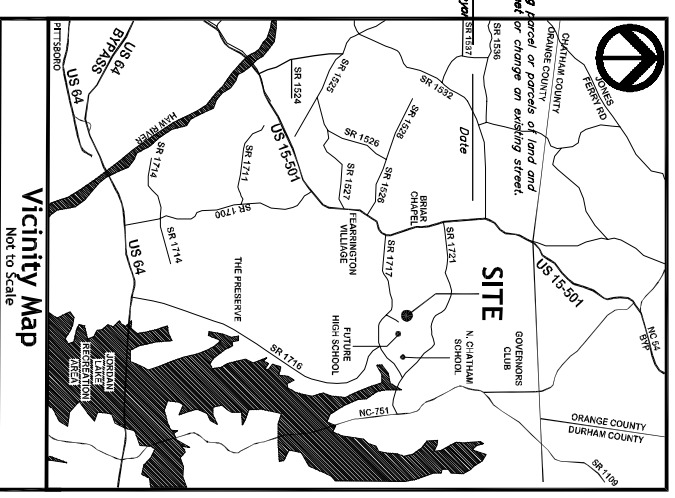


DEVELOPER:
 MacGregor Development Company
 201 Shannon Oaks Circle, Suite 201
 Cary, North Carolina 27511

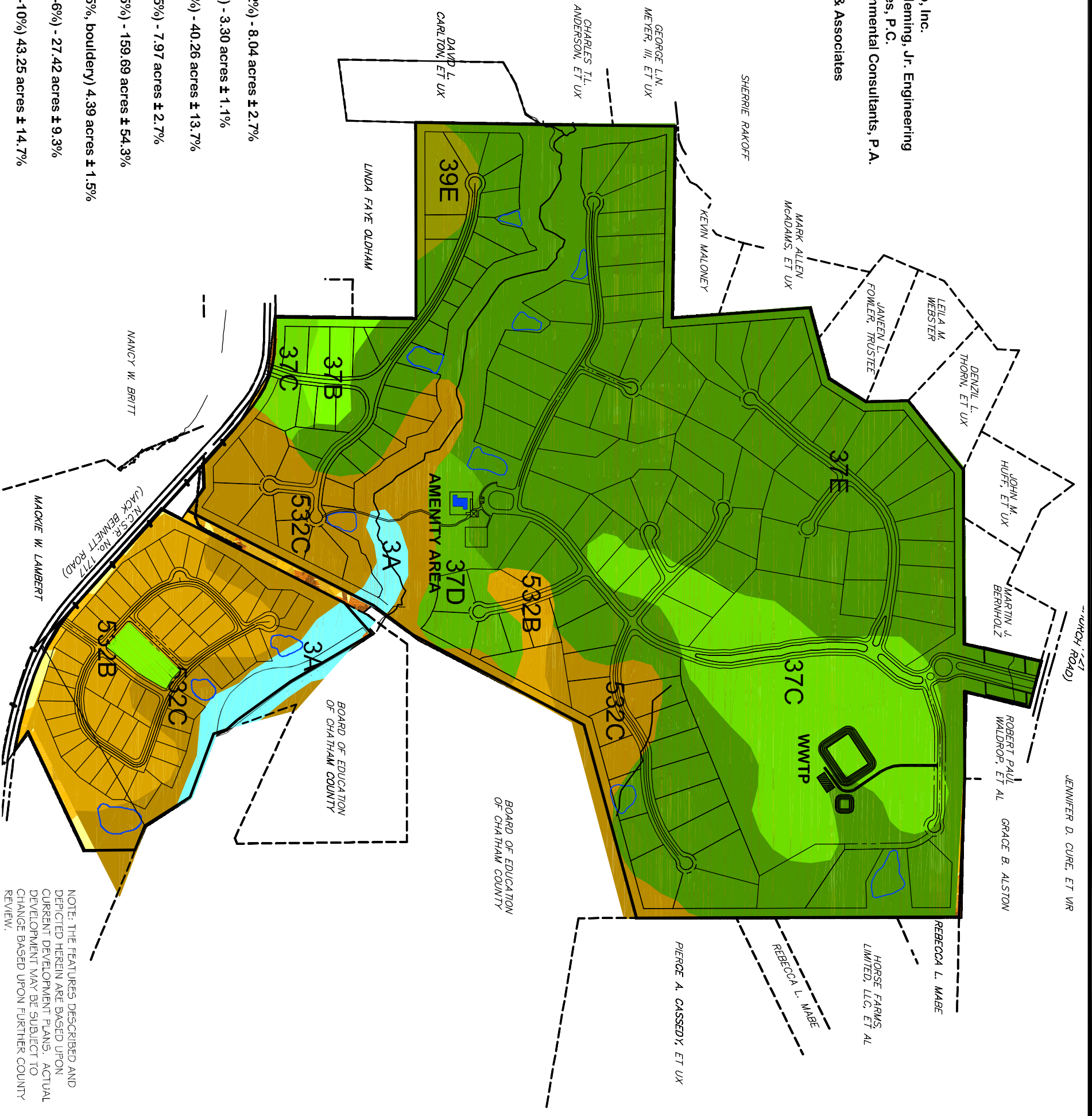
CONSULTANTS:

Attorneys Bradshaw & Robinson, LLP
 Civil Engineer/Land Planner C. E. Group, Inc.
 Wastewater Treatment Design W. Lee Fleming, Jr. Engineering
 Hydrologist Edwin Andrews & Associates, P.C.
 Ecologist/Soils Evaluation Soil & Environmental Consultants, P.A.
 Surveyor Smith and Smith Surveyors
 Transportation Engineer Ramey Kemp & Associates



SOILS LEGEND:

	Chewacla and Wehadkee (3A, 0-2%) - 8.04 acres ± 2.7%
	Wedowee sandy loam (37B, 2-6%) - 3.30 acres ± 1.1%
	Wedowee sandy loam (37C, 6-10%) - 40.26 acres ± 13.7%
	Wedowee sandy loam (37D, 10-15%) - 7.97 acres ± 2.7%
	Wedowee sandy loam (37E, 15-25%) - 159.69 acres ± 54.3%
	Wedowee sandy loam (39E, 15-35%, bouldery) 4.39 acres ± 1.5%
	Creedmoor-Green Level (532B, 2-6%) - 27.42 acres ± 9.3%
	Creedmoor-Green Level (532C, 6-10%) 43.25 acres ± 14.7%



BOOTH MOUNTAIN, CHATHAM COUNTY, NORTH CAROLINA

Booth Mountain Community
SOILS MAP
EXHIBIT MAP
 August 2004

NORTH
 SCALE: 1" = 600'

CE Group, Inc.
 LAND USE EVALUATION
 CIVIL ENGINEERING
 CONSTRUCTION MANAGEMENT
 1051 Pemberton Hill Road, Suite 201, Apex, N.C. 27502
 voice (919) 367-8790- fax (919) 367-8791

NOTE: THE FEATURES DESCRIBED AND DEPICTED HEREIN ARE BASED UPON CURRENT DEVELOPMENT PLANS. ACTUAL DEVELOPMENT MAY BE SUBJECT TO CHANGE BASED UPON FURTHER COUNTY REVIEW.