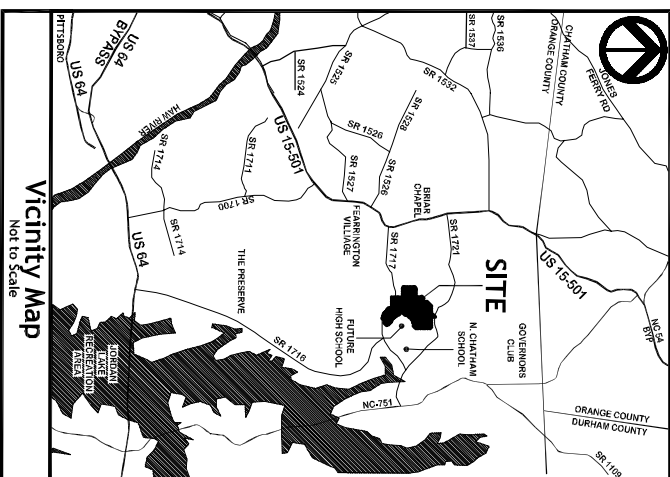


**DEVELOPER:**  
 MacGregor Development Company  
 201 Shannon Oaks Circle, Suite 201  
 Cary, North Carolina 27511

**CONSULTANTS:**

Attorneys ..... Bradshaw & Robinson, LLP  
 Civil Engineer/Land Planner ..... C. E. Group, Inc.  
 Wastewater Treatment Design ..... W. Lee Fleming, Jr. Engineering  
 Hydrologist ..... Edwin Andrews & Associates, P.C.  
 Ecologist/Soils Evaluation ..... Soil & Environmental Consultants, P.A.  
 Surveyor ..... Smith and Smith Surveyors  
 Transportation Engineer ..... Ramey Kemp & Associates



**SITE SUMMARY:**

**SINGLE FAMILY HOMESITES (180 TOTAL)**

- 88 Estate Lots (± 150' width)
- 39 Neighborhood Lots (± 100' width)
- 53 Village Lots (± 80' width)

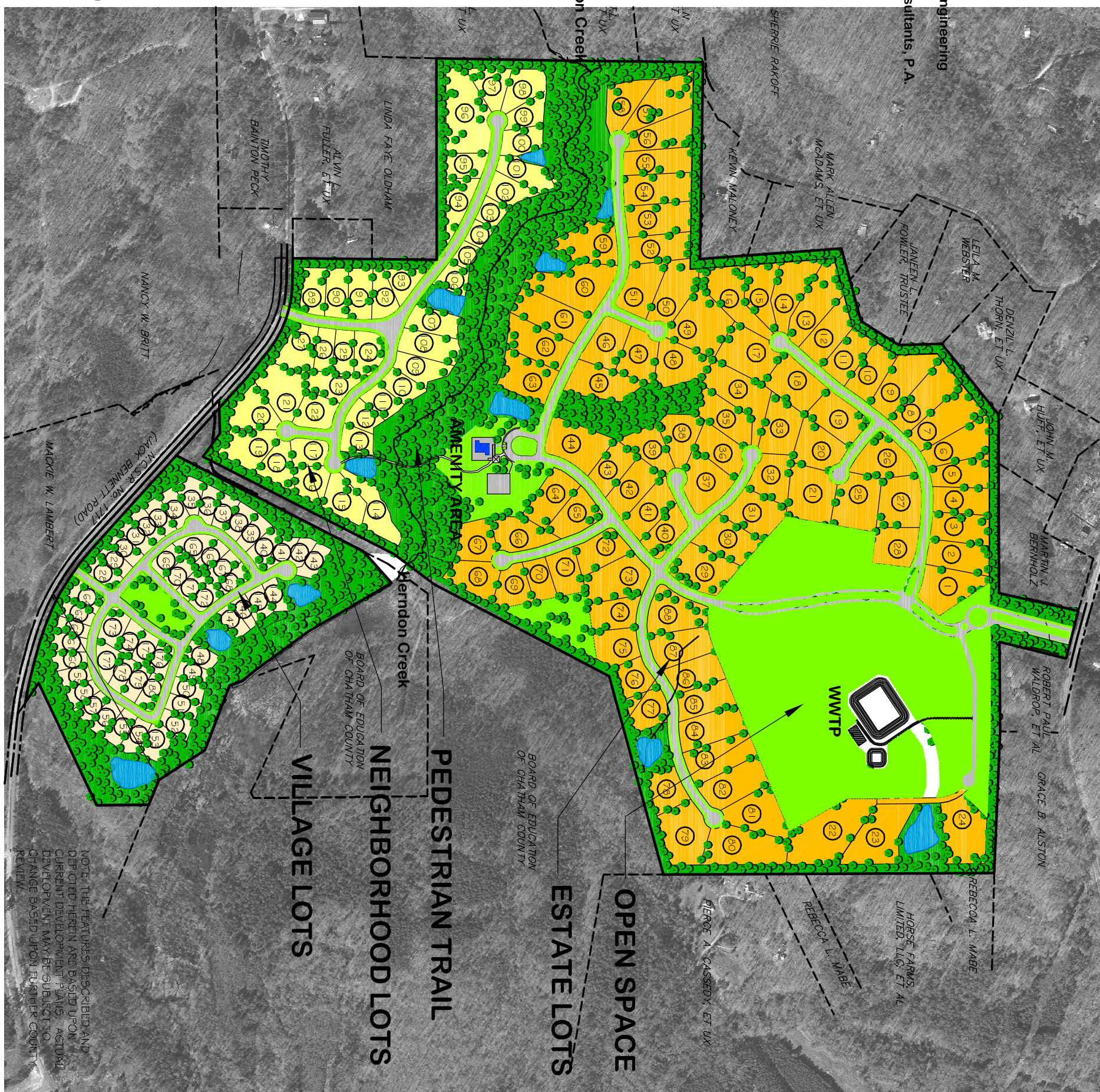
**ROAD RIGHTS OF WAY**

- 11,775 L.F. PRIVATE ROADS
- 7,208 L.F. PUBLIC ROADS

**TOTAL SITE AREA (294.32 ACRES)**

- 156.7 acres Residential Area
- 35.7 acres Road Rights of Way
- 2.0 acres WWTP/Utility
- 2.5 acres Recreation/Amenity
- 39.0 acres Open Space
- 58.4 acres Passive Open Space (Wooded Buffer)

- Wet and Dry Ponds
- Open Space
- Wooded Buffer (Passive Open Space)



NOTE: THE FEATURES DESCRIBED AND DEPICTED HEREIN ARE BASED UPON CURRENT DEVELOPMENT PLANS. ACTUAL DEVELOPMENT MAY BE SUBJECT TO CHANGE BASED UPON FURTHER COUNTY REVIEW.

**BOOTH MOUNTAIN, CHATHAM COUNTY, NORTH CAROLINA**

Booth Mountain Community  
**SKETCH MASTER PLAN**

**EXHIBIT MAP**

August 2004



**NORTH**



SCALE: 1" = 600'

**CE Group, inc.**

LAND USE EVALUATION  
 CIVIL ENGINEERING  
 CONSTRUCTION MANAGEMENT

1051 Pemberton Hill Road, Suite 201, Apex, N.C. 27502  
 voice (919) 367-8790- fax (919) 367-8791